

GENERAL NOTES

PLANNING BOARD  
TOWN OF BETHLEHEM  
ALBANY COUNTY, NEW YORK  
FINAL PLAT APPROVAL

WHEN SIGNED BY THE PLANNING BOARD OFFICER OF THE ALBANY COUNTY ENGINEERING DEPARTMENT, THIS PLAT APPROVAL CONSTITUTES FINAL APPROVAL OF THIS PLAT.

SIGNED: *Robert D. Mathews*  
TITLE: *Surveyor*  
DATE: *8-27-86*

SEE ALSO CERTIFICATE OF APPROVAL OF FINAL PLAT NO. *44-2-86*

UNAUTHORIZED ALTERATIONS OR ADDITIONS TO THIS DOCUMENT IS A VIOLATION OF SECTION 2309 SUBDIVISION 2 OF THE NEW YORK STATE EDUCATION LAW

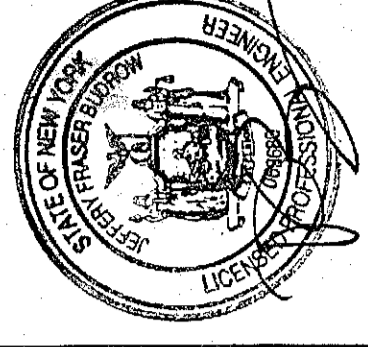
REVISIONS

DATE	BY	DESCRIPTION	SYMBOL
6/29	CHU	FINAL PLAN REVISIONS	▲
6/29	CHU	FINAL PLAN REVISIONS	▲
6/29	CHU	FINAL PLAN REVISIONS	▲
12/20	CHU	FINAL PLAN REVISIONS	▲
1/28/87	CHU	FINAL PLAN REVISIONS	▲
3/29	CHU	MISCELLANEOUS REVISIONS	▲
4/28	CHU	MISCELLANEOUS REVISIONS	▲

**EDWARD W. BOUTELLE AND SON**  
CIVIL ENGINEERS AND SURVEYORS  
423 KENWOOD AVENUE  
DELMAR, NEW YORK  
TEL. (518) 438-9981 FAX. (518) 438-9982  
A DIVISION OF J. KENNETH PRAGER AND ASSOCIATES, P.C.

**FINAL PLAN AMENDED CARRIAGE HILL SUBDIVISION**  
MAP OF LANDS OF  
**CHARLEW CONSTRUCTION CORP.**

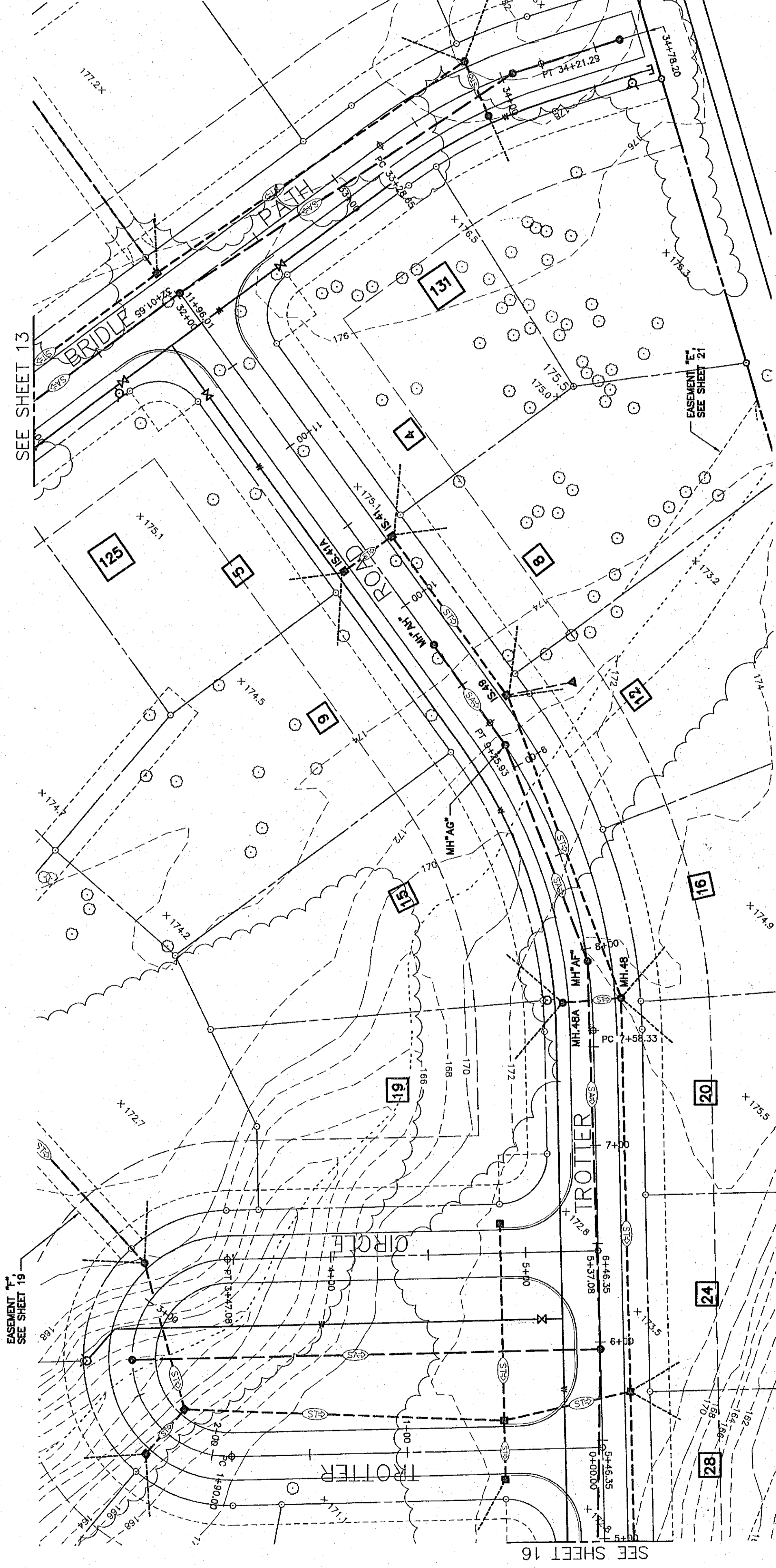
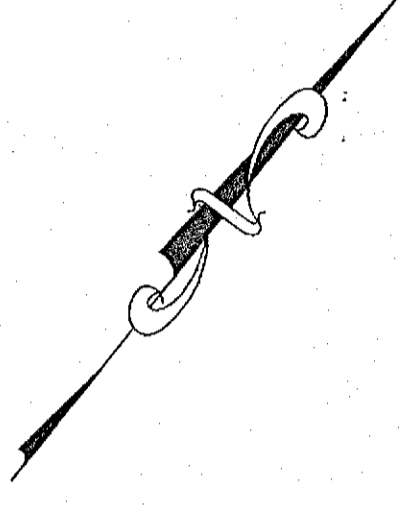
SEP 1 6 2008  
TOWN OF BETHLEHEM  
ALBANY COUNTY OF ALBANY  
SCALE: AS NOTED



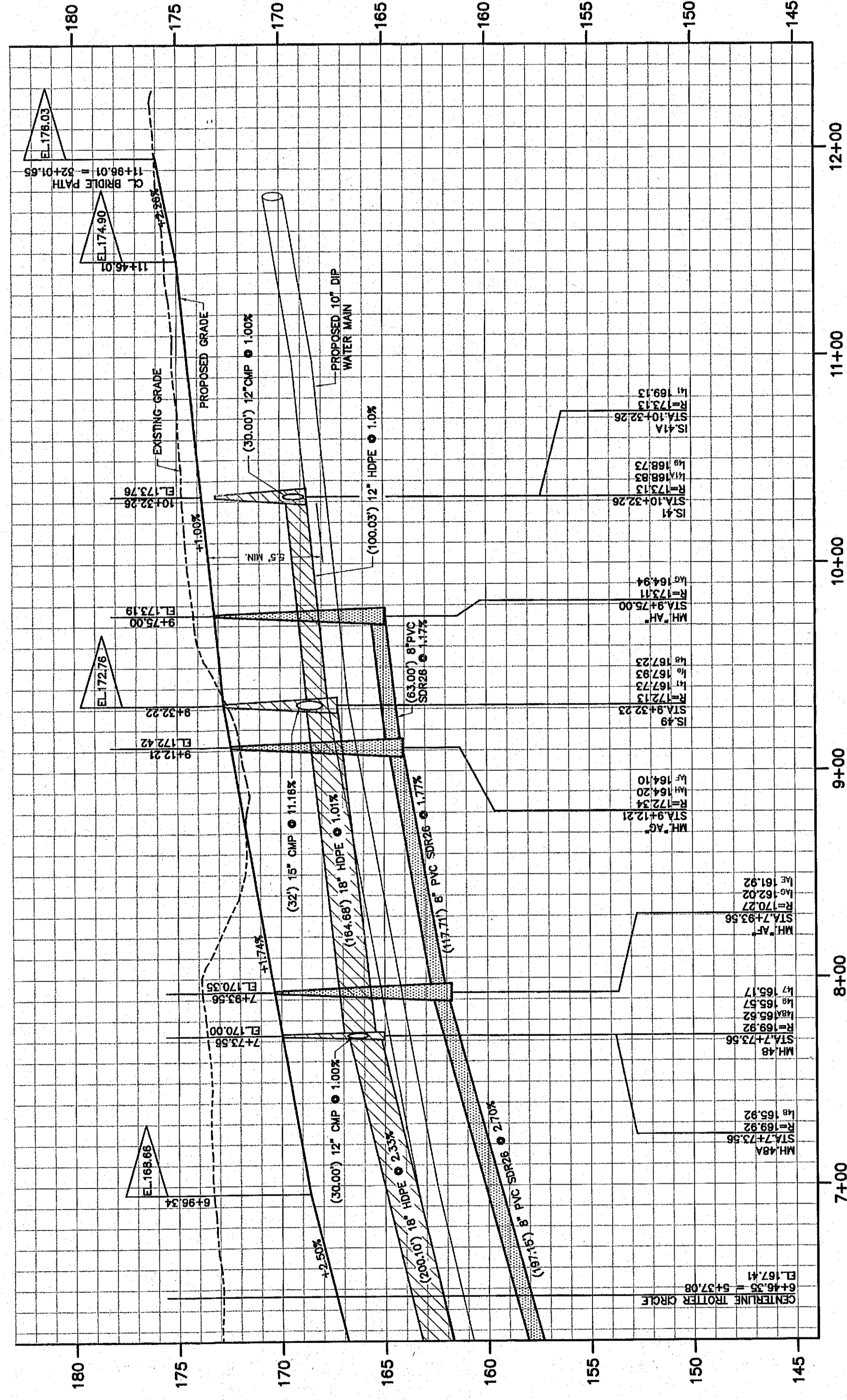
PROJ. SURVEYOR: CHU  
DRAWN BY: THW  
ASSEMBLED BY: THW  
CHECKED BY: CHU

PROJECT NO.: 86-008  
CAD FILE NAME: 4103-017

SHEET TITLE: **PLAN & PROFILE**  
TROTTER ROAD STA. 6+20 - 11+96.01  
DATE: NOVEMBER 1985  
SHEET 17 OF 31



**GENERAL PLAN - TROTTER RD.**  
CENTERLINE STATIONING 6+20 - 11+96.01  
SCALE: 1" = 40'



**PROFILE - TROTTER RD.**  
SCALE: 1" = 4' VERT. / 1" = 40' HORIZ.

ALBANY COUNTY DEPARTMENT OF HEALTH  
DIVISION OF ENVIRONMENTAL HEALTH SERVICES  
By direction of the Commissioner of Health, this  
plan has been reviewed and approved. See 1985 State  
Sanitary Code, Section 23.01.

