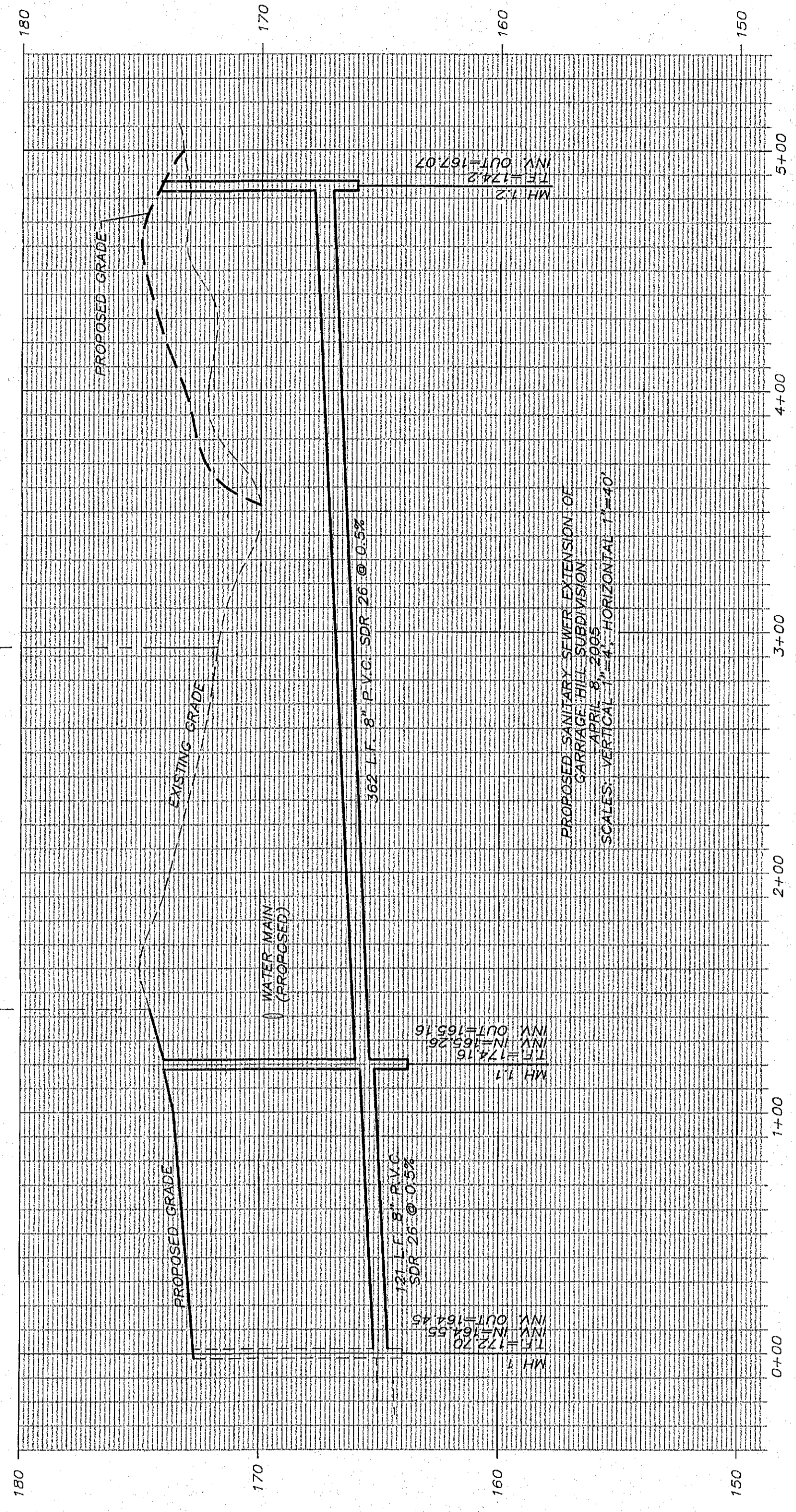


PLAN
SCALE: 1" = 30'



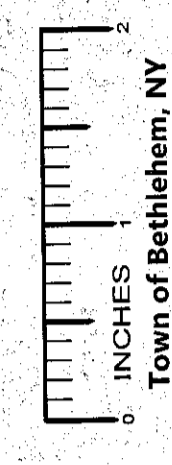
TOWN OF BETHELEM
STANDARD NOTES FOR PLANS

- 1) ALL UTILITIES TO BE INSTALLED IN ACCORDANCE WITH TOWN OF BETHELEM STANDARD NOTES FOR PLANS AND THE CONTRACTOR SHALL OBTAIN THESE TWO DOCUMENTS FOR USE ON THE JOB.
- 2) ALL ELEVATIONS SHOWN ARE ON USGS ELEVATION BASE.
- 3) ALL DRAINS TO BE 24\"/>

GENERAL NOTES:

- 1) UTILITY INFORMATION SHOWN HEREON HAS BEEN COMPILED FROM RECORD DRAWINGS AND FIELD INSPECTIONS. ALL EXISTING UTILITIES SHOWN ARE NOT TO BE DISTURBED. CONTRACTOR IS RESPONSIBLE FOR NOTIFYING AND COORDINATING WITH ALL RESPECTIVE UTILITIES PRIOR TO ANY WORKING DAYS PRIOR TO THE WORK TO MAKE UNDERGROUND UTILITIES LOCATED IN THE FIELD. CALL 1-800-862-7822.
- 2) NO SUMP PUMP, ROOF DRAINS, CELLAR DRAINS OR FOOTING DRAINS SHALL BE CONNECTED TO THE SANITARY SEWER SYSTEM.

ALBANY COUNTY DEPARTMENT OF HEALTH
DIVISION OF ENVIRONMENTAL HEALTH SERVICES
By direction of the Commissioner of Health, these plans are hereby approved. See date shown on each and additional.



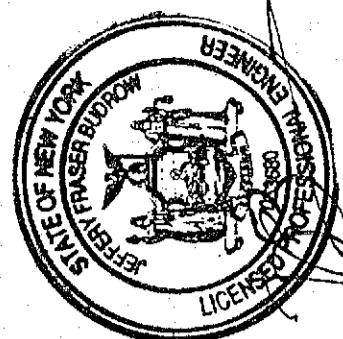
PLANNING BOARD
TOWN OF BETHELEM
ALBANY COUNTY, NEW YORK
FINAL PLAT APPROVAL
I, WHEN SIGNED BY THE ONLY AUTHORIZED OFFICER OF THE PLANNING BOARD, HEREBY CONSTITUTE FINAL APPROVAL OF THIS PLAN.
SIGNED: *Charles J. Mathews*
TITLE: *Chairman*
DATE: *10-17-26*
SEE ALSO CERTIFICATE OF APPROVAL OF FINAL PLAT NO. *16-26-26* UNDER THE PROVISIONS OF ARTICLE 17 OF THE GENERAL VILLAGE LAW OF THE STATE OF NEW YORK. STATE EDUCATION LAW.

REVISIONS

DATE	BY	DESCRIPTION	SYMBOL
6/08	800	REVISION FOR REC COMMENTS	△

EDWARD W. BOUTELLE AND SON
CIVIL ENGINEERS AND SURVEYORS
423 KENWOOD AVENUE
DELMAR, NEW YORK
TEL (518) 439-9981 FAX (518) 439-9982
A DIVISION OF J. KEENE PRAGER AND ASSOCIATES, P.C., P.A., P.C.

FINAL PLAN
AMENDED
CARRIAGE HILL SUBDIVISION
MAP OF LANDS OF
CHARLEW CONSTRUCTION CORP.
SEP 13 2006
TOWN OF BETHELEM, ALBANY COUNTY OF ALBANY STATE OF NEW YORK
SCALE: SEE PLAN



PROJ. SURVEYOR: CHJ
DRAWN BY: TWK
CHECKED BY: CHJ
PROJECT NO.: 98-020
CAD FILE NAME: 4103-008

SHEET TITLE: PLAN AND PROFILE
JERICHO ROAD SANITARY SEWER EXT.
DATE: APRIL 25, 2006 SHEET 31 OF 31