

**GENERAL NOTES**

- TOTAL AREA OF CARRIAGE HILL SUBDIVISION: 66.884± ACRES.

**LEGEND**

PROPOSED UNIMPROVED LOT	PROPOSED IMPROVED LOT	PROPOSED UNIMPROVED LOT WITH FUTURE DRIVE	PROPOSED UNIMPROVED LOT WITH FUTURE DRIVE AND SIDEWALK
PROPOSED UNIMPROVED LOT WITH FUTURE DRIVE AND SIDEWALK	PROPOSED UNIMPROVED LOT WITH FUTURE DRIVE AND SIDEWALK AND SIDEWALK	PROPOSED UNIMPROVED LOT WITH FUTURE DRIVE AND SIDEWALK AND SIDEWALK AND SIDEWALK	PROPOSED UNIMPROVED LOT WITH FUTURE DRIVE AND SIDEWALK AND SIDEWALK AND SIDEWALK AND SIDEWALK
PROPOSED UNIMPROVED LOT WITH FUTURE DRIVE AND SIDEWALK AND SIDEWALK AND SIDEWALK AND SIDEWALK	PROPOSED UNIMPROVED LOT WITH FUTURE DRIVE AND SIDEWALK AND SIDEWALK AND SIDEWALK AND SIDEWALK AND SIDEWALK	PROPOSED UNIMPROVED LOT WITH FUTURE DRIVE AND SIDEWALK AND SIDEWALK AND SIDEWALK AND SIDEWALK AND SIDEWALK	PROPOSED UNIMPROVED LOT WITH FUTURE DRIVE AND SIDEWALK AND SIDEWALK AND SIDEWALK AND SIDEWALK AND SIDEWALK
PROPOSED UNIMPROVED LOT WITH FUTURE DRIVE AND SIDEWALK AND SIDEWALK AND SIDEWALK AND SIDEWALK AND SIDEWALK	PROPOSED UNIMPROVED LOT WITH FUTURE DRIVE AND SIDEWALK AND SIDEWALK AND SIDEWALK AND SIDEWALK AND SIDEWALK	PROPOSED UNIMPROVED LOT WITH FUTURE DRIVE AND SIDEWALK AND SIDEWALK AND SIDEWALK AND SIDEWALK AND SIDEWALK	PROPOSED UNIMPROVED LOT WITH FUTURE DRIVE AND SIDEWALK AND SIDEWALK AND SIDEWALK AND SIDEWALK AND SIDEWALK

**REVISIONS**

DATE	BY	DESCRIPTION	SYMBOL
6/19	CHU	FINAL PLAN REVISIONS	△
10/19	CHU	FINAL PLAN REVISIONS	△
6/20	CHU	FINAL PLAN REVISIONS	△
12/20	CHU	FINAL PLAN REVISIONS	△
7/20	CHU	FINAL PLAN REVISIONS	△
3/06	CHU	FINAL PLAN REVISIONS	△
6/06	BOO	REVISED PER REC COMMENTS	△

UNAUTHORIZED ALTERATIONS OR ADDITIONS TO THIS DOCUMENT IS A VIOLATION OF THE PROFESSIONAL ENGINEERING LAW OF THE STATE OF NEW YORK.

**EDWARD W. BOUTELLE AND SON**  
 CIVIL ENGINEERS AND SURVEYORS  
 423 KENWOOD AVENUE  
 DELMAR, NEW YORK  
 TEL (518) 439-9981 FAX (518) 439-9982  
 A DIVISION OF J. KENNETH FRASER AND ASSOCIATES, P.C., L.L.C.

**FINAL PLAN AMENDED CARRIAGE HILL SUBDIVISION**  
 MAP OF LANDS OF CHARLEW CONSTRUCTION CORP.

TOWN OF BETHELEHEM  
 COUNTY OF ALBANY  
 STATE OF NEW YORK

SEP 16 2006

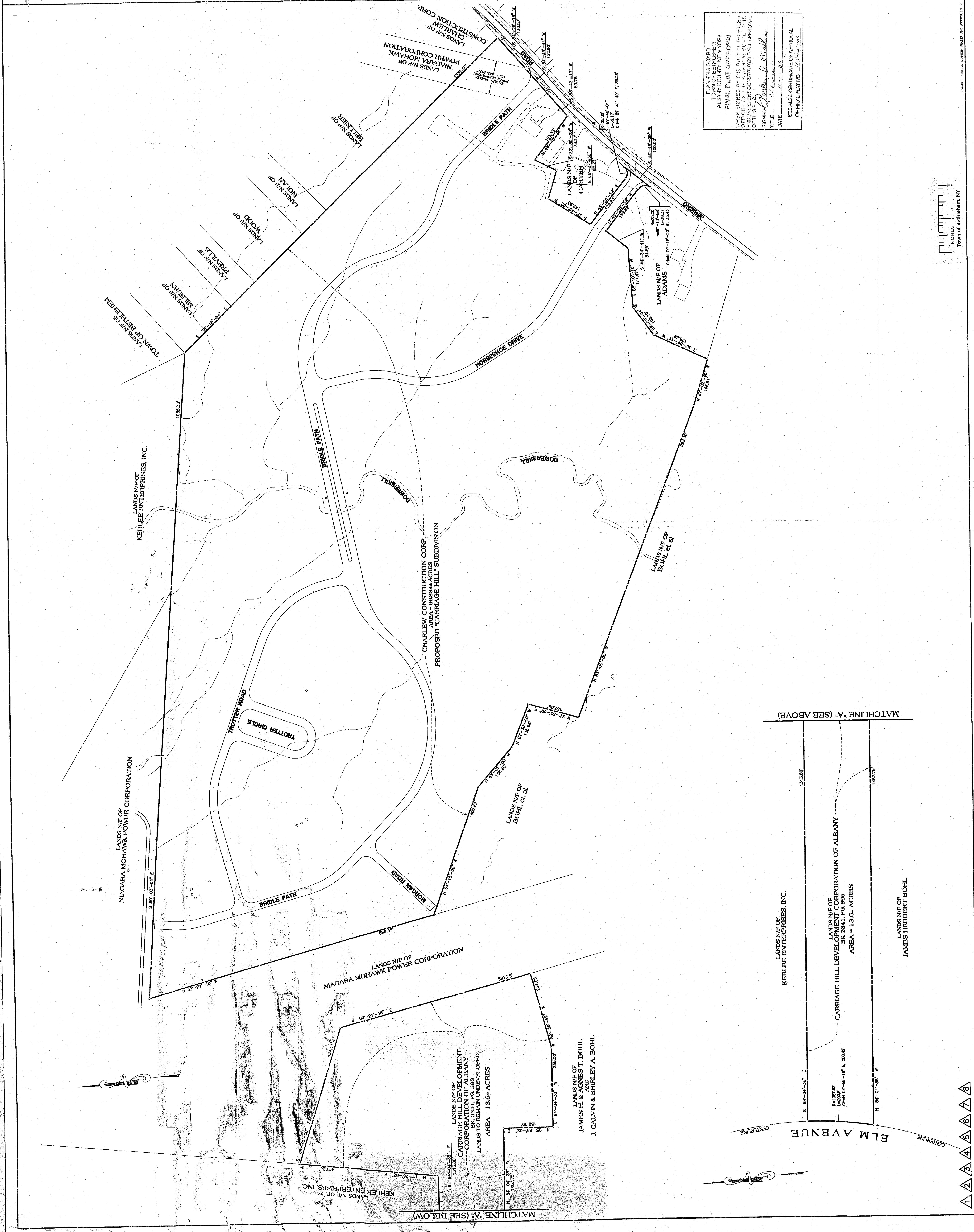
SCALE: 1" = 100'

PROJ. SURVEYOR: CHU  
 ASSEMBLED BY: TWK  
 CHECKED BY: CHU

PROJECT NO: 99-020  
 CAD FILE NAME: 4103-001

SHEET TITLE: **BOUNDARY LINE MAP**

DATE: JUN. 18, 1999 SHEET 1 OF 31



PLANNING BOARD  
 TOWN OF BETHELEHEM  
 ALBANY COUNTY, NEW YORK

**FINAL PLAT APPROVAL**

WHEN SIGNED BY THE OFFICER AUTHORIZED BY THE OFFICE OF THE PLANNING BOARD, THIS DOCUMENT CONSTITUTES FINAL APPROVAL OF THIS PLAT.

SIGNED: *Robert J. Mathew*  
 TITLE: *Chairman*  
 DATE: *9-17-06*

SEE ALSO CERTIFICATE OF APPROVAL OF FINAL PLAT NO. *1247-06-001*

