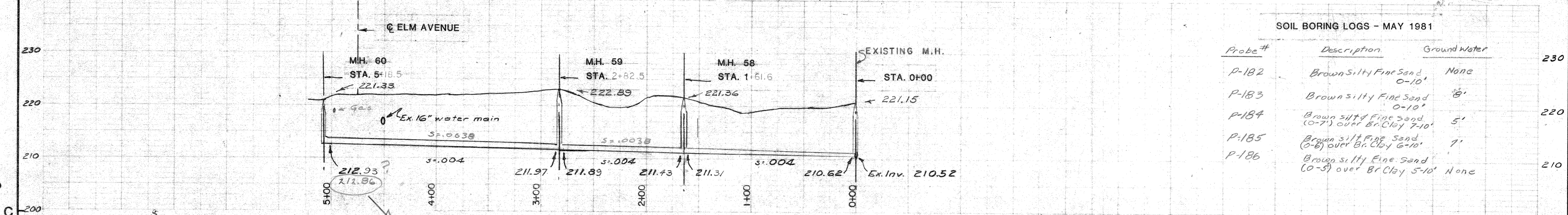


KEY PLAN

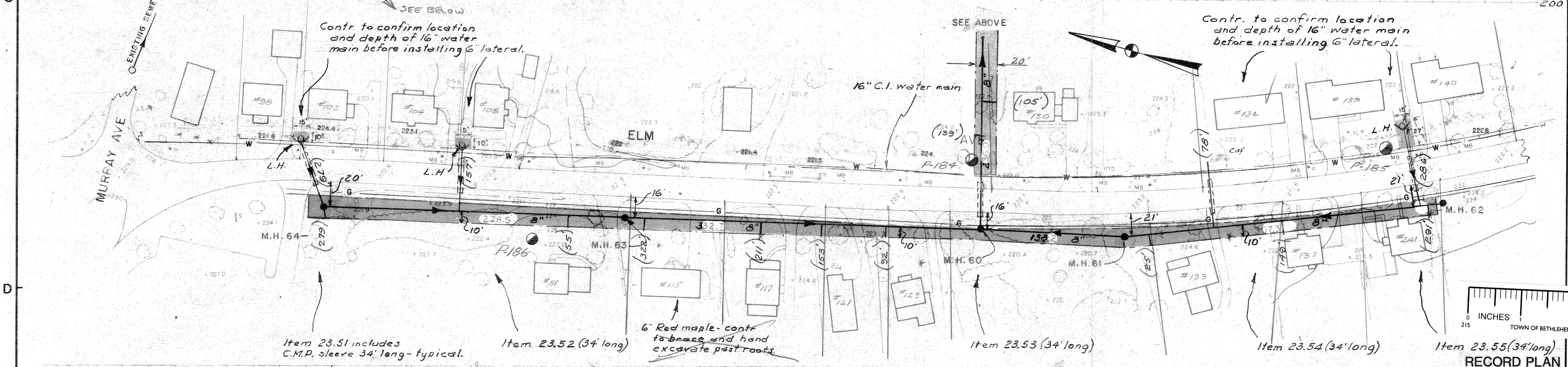
NOTES
 Elm Ave. is a County Hwy.
 Work on crossings shall progress to completion as soon as possible after work is started.
 Maintenance and protection of traffic shall be in accordance with the N.U.T.C.D.

UNAUTHORIZED ALTERATIONS OR ADDITIONS TO THIS DOCUMENT IS A VIOLATION OF SECTION 7208 SUBDIVISION 2 OF THE NEW YORK STATE EDUCATION LAW



REVISIONS

DATE	BY	DESCRIPTION	SYMBOL
8/81	E.O.	23:51 - 23:55 LENGTHENED	
9/81	H.J.	EASEMENTS ADDED	
11/83	E.O. R.P.		



J. KENNETH FRASER AND ASSOCIATES, P.C.
 CONSULTING ENGINEERS
 RENNELAER, NEW YORK

BETHLEHEM SEWER DISTRICT
 TOWN OF BETHLEHEM
 ALBANY COUNTY NEW YORK

USEPA-NYSDEC PROJECT C-36-1096

CONTRACT NO. 2
COLLECTING SEWERS

SCALE: HORIZONTAL 1" = 50'
 VERTICAL 1" = 10'

PROJ. ENGR.: W.T.B.
 DRAWN BY: H.P.J.
 TRACED BY: H.P.J.
 CHECKED BY: W.T.B.
 REF. No. 5109

SHEET TITLE: **ELM AVE.**
 DATE: JUNE 1981 SHEET 18 OF 32

