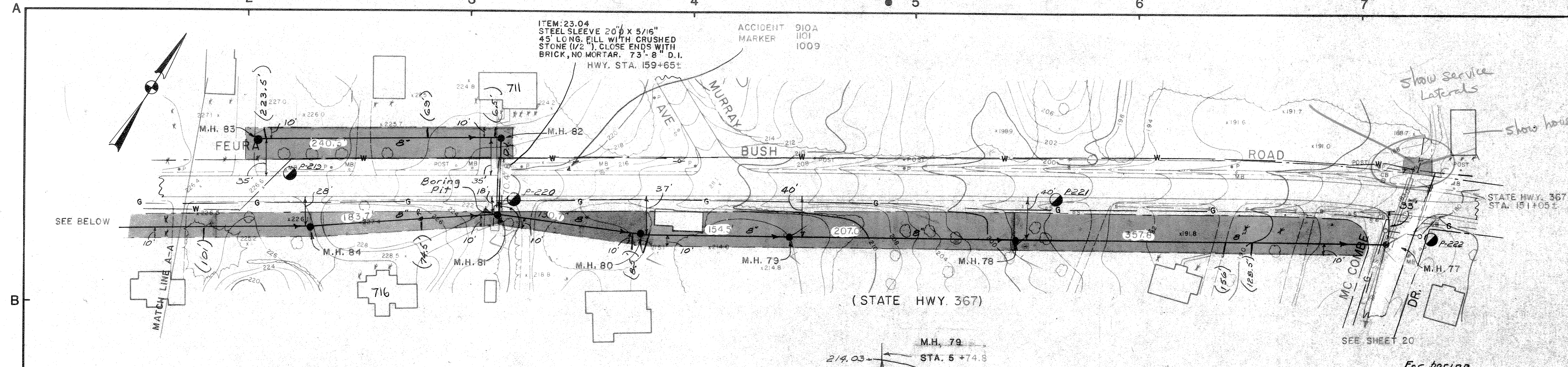


IF THIS SHEET IS NOT 24" x 36" IT IS A REDUCED PRINT - SCALE ACCORDINGLY



KEY PLAN

NOTES

FEURA BUSH RD. IS N.Y.S. HWY. # 367

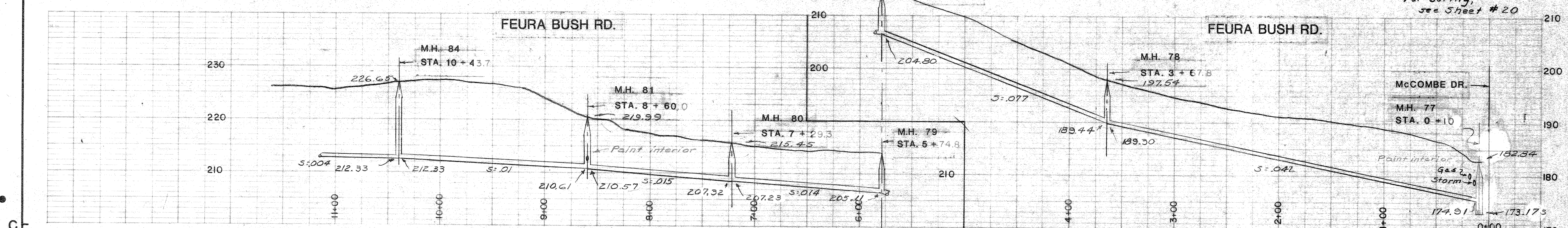
STATE HWY. 367 STA. 151+05±

SEE SHEET 20

For boring, see Sheet # 20

Show Service Laterals

Show house number



UNAUTHORIZED ALTERATIONS OR ADDITIONS TO THIS DOCUMENT IS A VIOLATION OF SECTION 7209 SUBDIVISION 2 OF THE NEW YORK STATE EDUCATION LAW

REVISIONS

DATE	BY	DESCRIPTION	SYMBOL
1/82	E.O.	M.H. 77 MOVED TO WEST 40'	
11/83	E.O.	R.P.	

J. KENNETH FRASER AND ASSOCIATES, P.C.

CONSULTING ENGINEERS
RENSELAER, NEW YORK

BETHLEHEM SEWER DISTRICT

TOWN OF BETHLEHEM
ALBANY COUNTY NEW YORK

USEPA-NYSDEC PROJECT C-36-1096

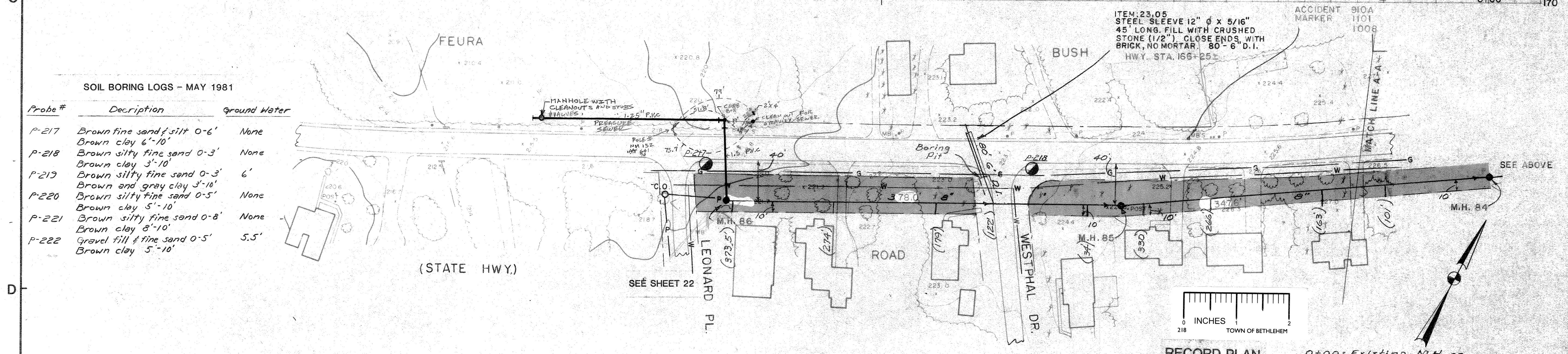
CONTRACT NO. 2

COLLECTING SEWERS

SCALE: HORIZONTAL 1" = 50'
VERTICAL 1" = 10'

PROJ. ENGR.: W.T.B.
DRAWN BY: E.W.O.
TRACED BY: E.W.O.
CHECKED BY: W.T.B.

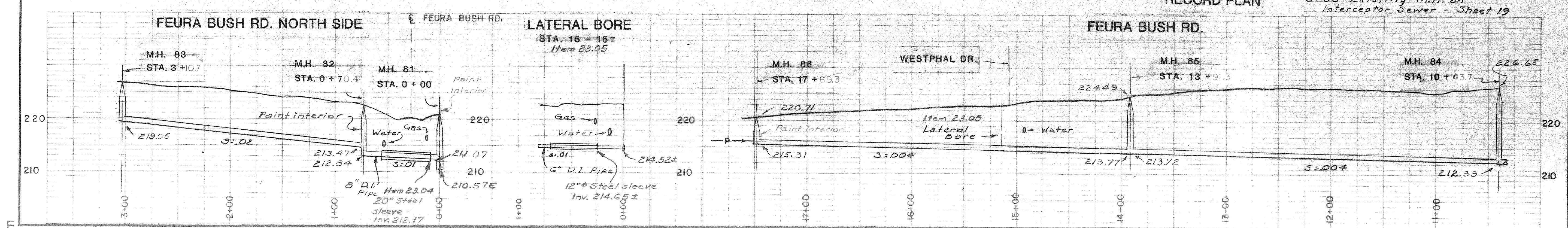
REF. No. 5112



SHEET TITLE: FEURA BUSH ROAD

DATE: JUNE 1981

SHEET 21 OF 32



SOIL BORING LOGS - MAY 1981

Probe #	Description	Ground Water
P-217	Brown fine sand & silt 0-6' Brown clay 6'-10'	None
P-218	Brown silty fine sand 0-3' Brown clay 3'-10'	None
P-219	Brown silty fine sand 0-3' Brown and gray clay 3'-10'	6'
P-220	Brown silty fine sand 0-5' Brown clay 5'-10'	None
P-221	Brown silty fine sand 0-8' Brown clay 8'-10'	None
P-222	Gravel fill & fine sand 0-5' Brown clay 5'-10'	5.5'

0+00 = Existing M.H. on Interceptor Sewer - Sheet 19