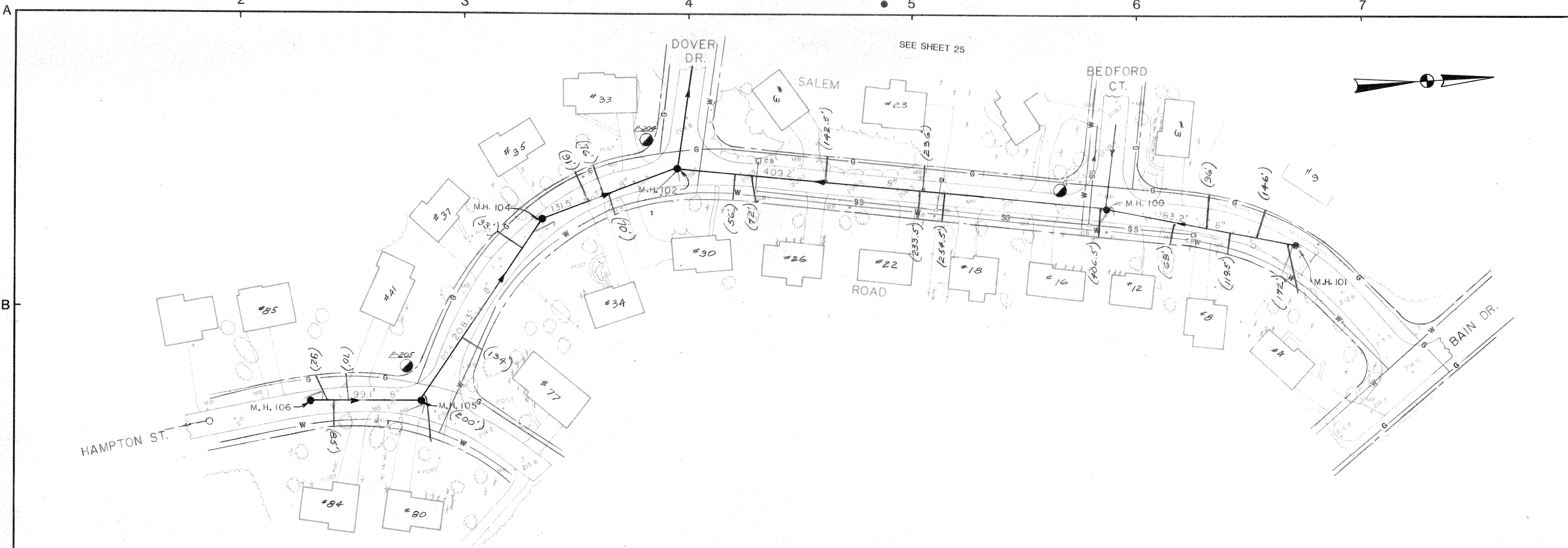
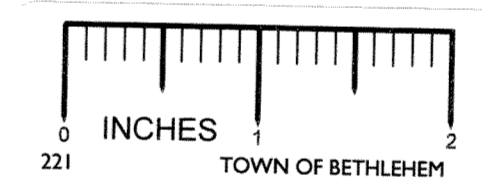


IF THIS SHEET IS NOT 24"x36" IT IS A REDUCED PRINT -SCALE ACCORDINGLY

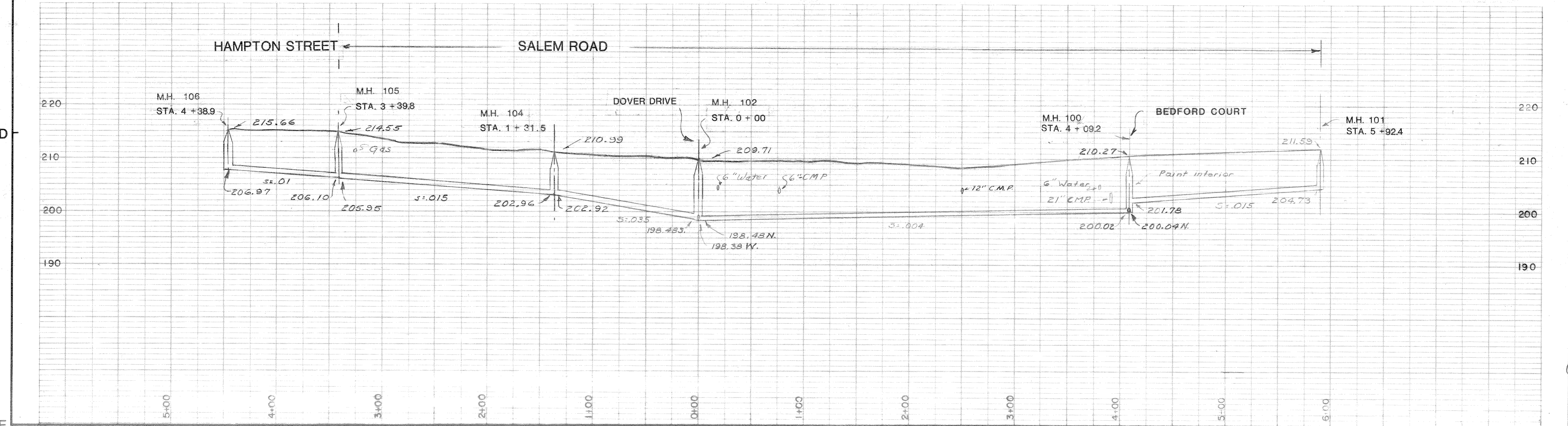


SOIL BORING LOGS - MAY 1981

Probe #	Description	Ground Water
P-203	Brown silty fine sand 0'-5' Gray clay 5'-12'	5'
P-204	Brown silty fine sand 0'-6' Gray clay 6'-12'	5'
P-205	Sand & gravel fill 0'-3' Brown & gray clay 3'-12'	3.5'



RECORD PLAN



KEY PLAN

NOTES

UNAUTHORIZED ALTERATIONS OR ADDITIONS TO THIS DOCUMENT IS A VIOLATION OF SECTION 7209 SUBDIVISION 2 OF THE NEW YORK STATE EDUCATION LAW

REVISIONS

DATE	BY	DESCRIPTION	SYMBOL
9/81	E.O.	SEWER ROUTE CHANGED	
11/83	E.O. R.P.		

J. KENNETH FRASER AND ASSOCIATES, P.C.

CONSULTING ENGINEERS
RENSELAER, NEW YORK

BETHLEHEM SEWER DISTRICT

TOWN OF BETHLEHEM
ALBANY COUNTY NEW YORK

USEPA-NYSDEC PROJECT C-36-1096

CONTRACT NO. 2

COLLECTING SEWERS

SCALE: HORIZONTAL 1" = 50'
VERTICAL 1" = 10'

PROJ. ENG'R.: W.I.B.
DRAWN BY: G.L.M.
TRACED BY: G.L.M.
CHECKED BY: W.T.B.

James K. Fraser
REF. No. 5115

SHEET TITLE:
HAMPTON ST. - SALEM RD.

DATE: JUNE 1981 SHEET 24 OF 22