

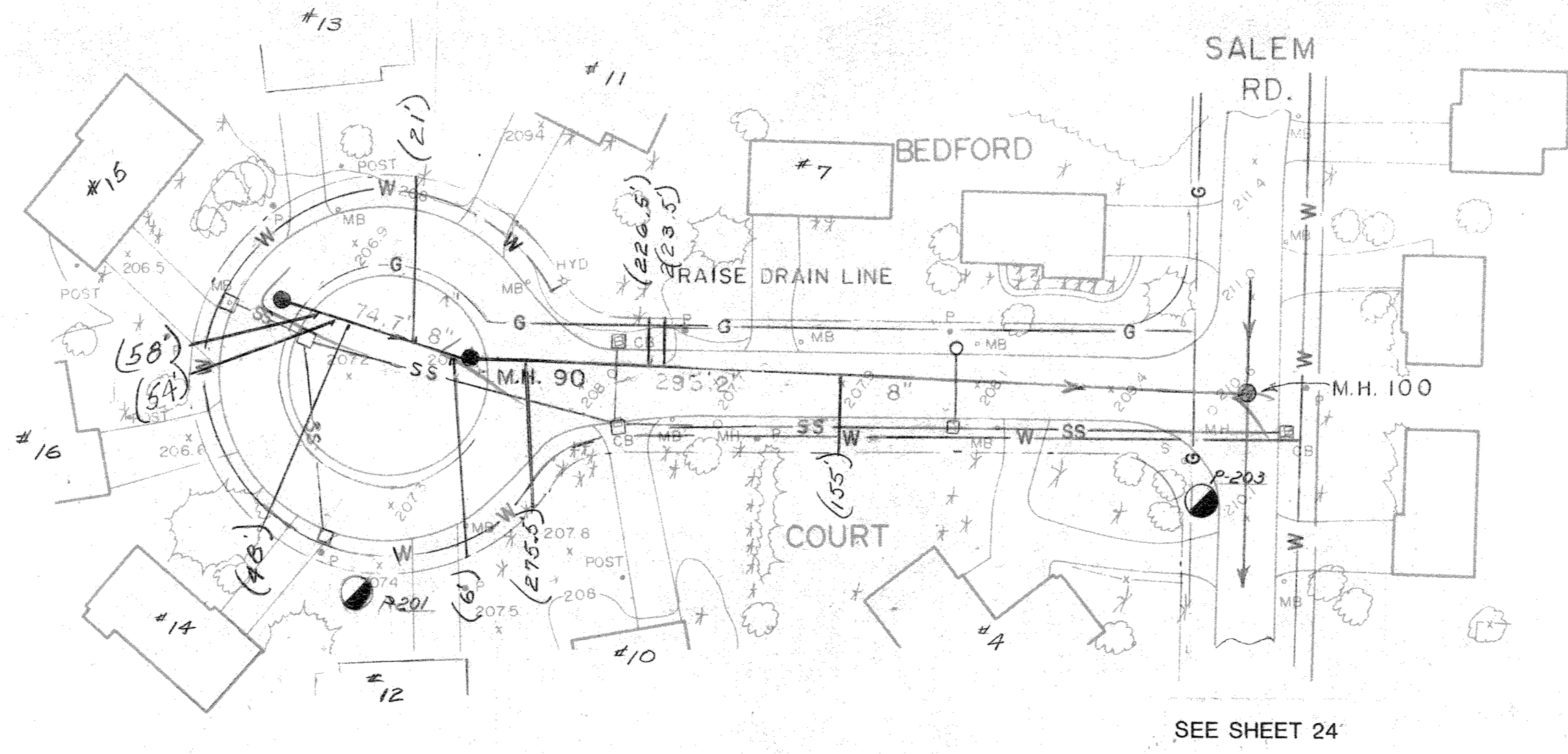
A 2 3 4 5 6 7 8

B

C

D

E



KEY PLAN

NOTES  
 PRESSURE SEWERS TO BE CONSTRUCTED OF P.V.C. PIPE SDR-26 WITH SOLVENT WELD JOINTS.

UNAUTHORIZED ALTERATIONS OR ADDITIONS TO THIS DOCUMENT IS A VIOLATION OF SECTION 7209 SUBDIVISION 2 OF THE NEW YORK STATE EDUCATION LAW.

REVISIONS

DATE	BY	DESCRIPTION	SYMBOL
9/81	E.O.	SEWER ROUTE CHANGED & 4 GRINDER PUMPS ADDED.	
11/83	E.O.	R.P.	

J. KENNETH FRASER AND ASSOCIATES, P.C.

CONSULTING ENGINEERS  
 RENSSELAER, NEW YORK

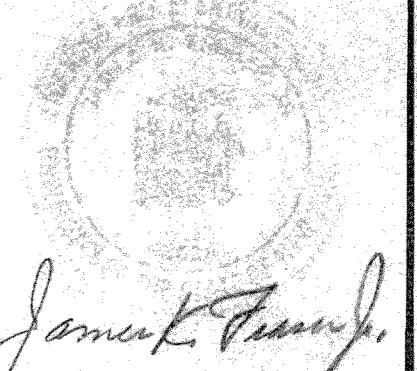
BETHLEHEM SEWER DISTRICT  
 TOWN OF BETHLEHEM  
 ALBANY COUNTY NEW YORK

USEPA-NYSDEC PROJECT C-36-1096

CONTRACT NO. 2  
 COLLECTING SEWERS

SCALE: HORIZONTAL 1" = 50'  
 VERTICAL 1" = 10'

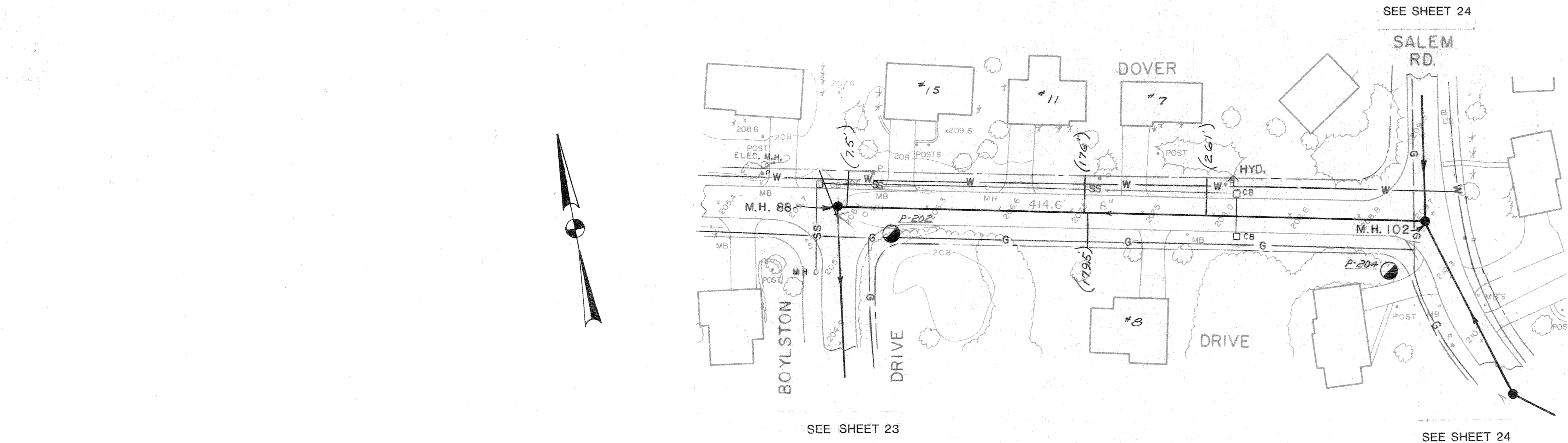
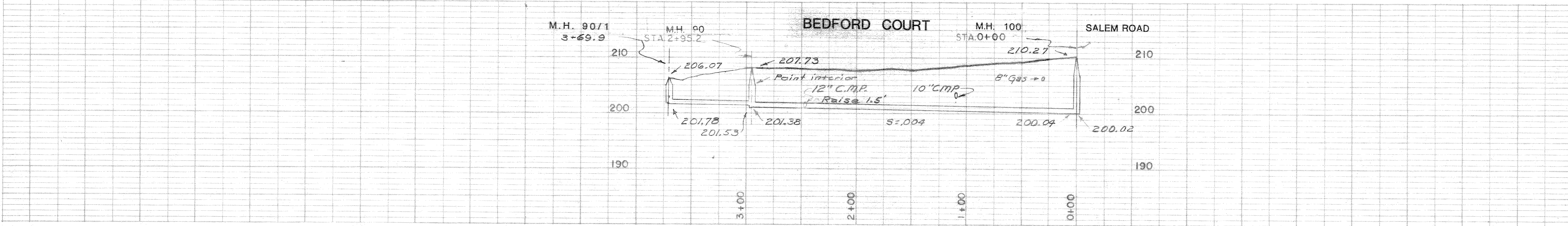
PROJ. ENGR.: W.T.B.  
 DRAWN BY: G.L.M.  
 TRACED BY: G.L.M.  
 CHECKED BY: W.T.B.



REF. No. 5116

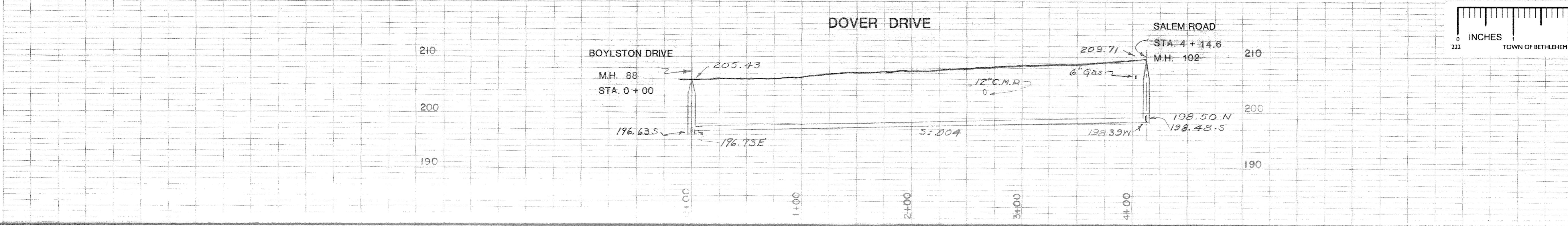
SHEET TITLE:  
 BEDFORD CT. - DOVER DR.

DATE: JUNE 1981 SHEET 25 OF 32



SOIL BORING LOGS - MAY 1981

Probe #	Description	Ground Water
P-201	Brown silty sand 0'-4'	8'
	Gray clay & silt 4'-12'	
P-202	Gravel fill 0'-4'	10'
	Brown & gray clay 4'-12'	
P-203	Brown silty fine sand 0'-5'	9'
	Gray clay 5'-12'	
P-204	Brown silty fine sand 0'-6'	9'
	Gray clay 6'-12'	



RECORD PLAN

