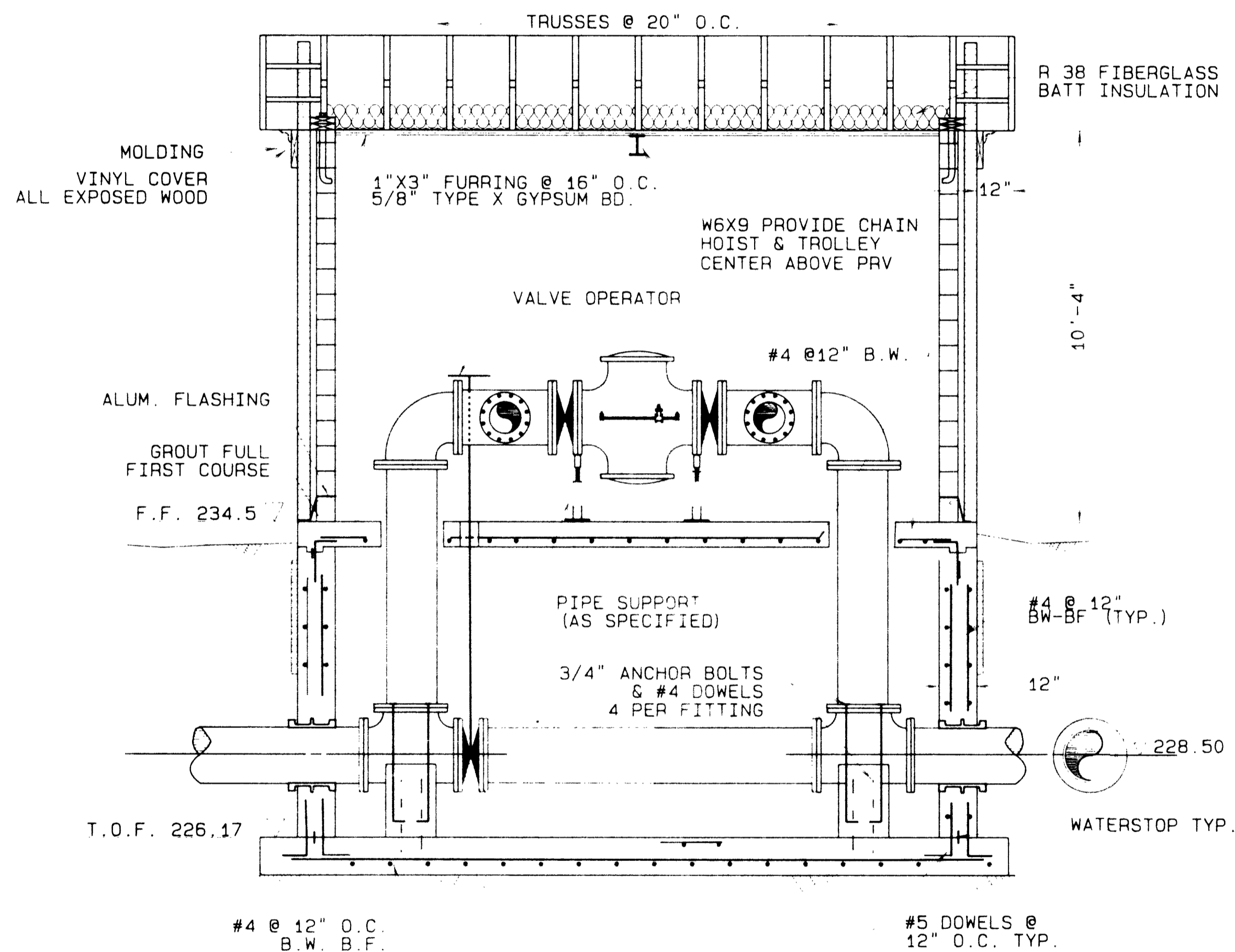
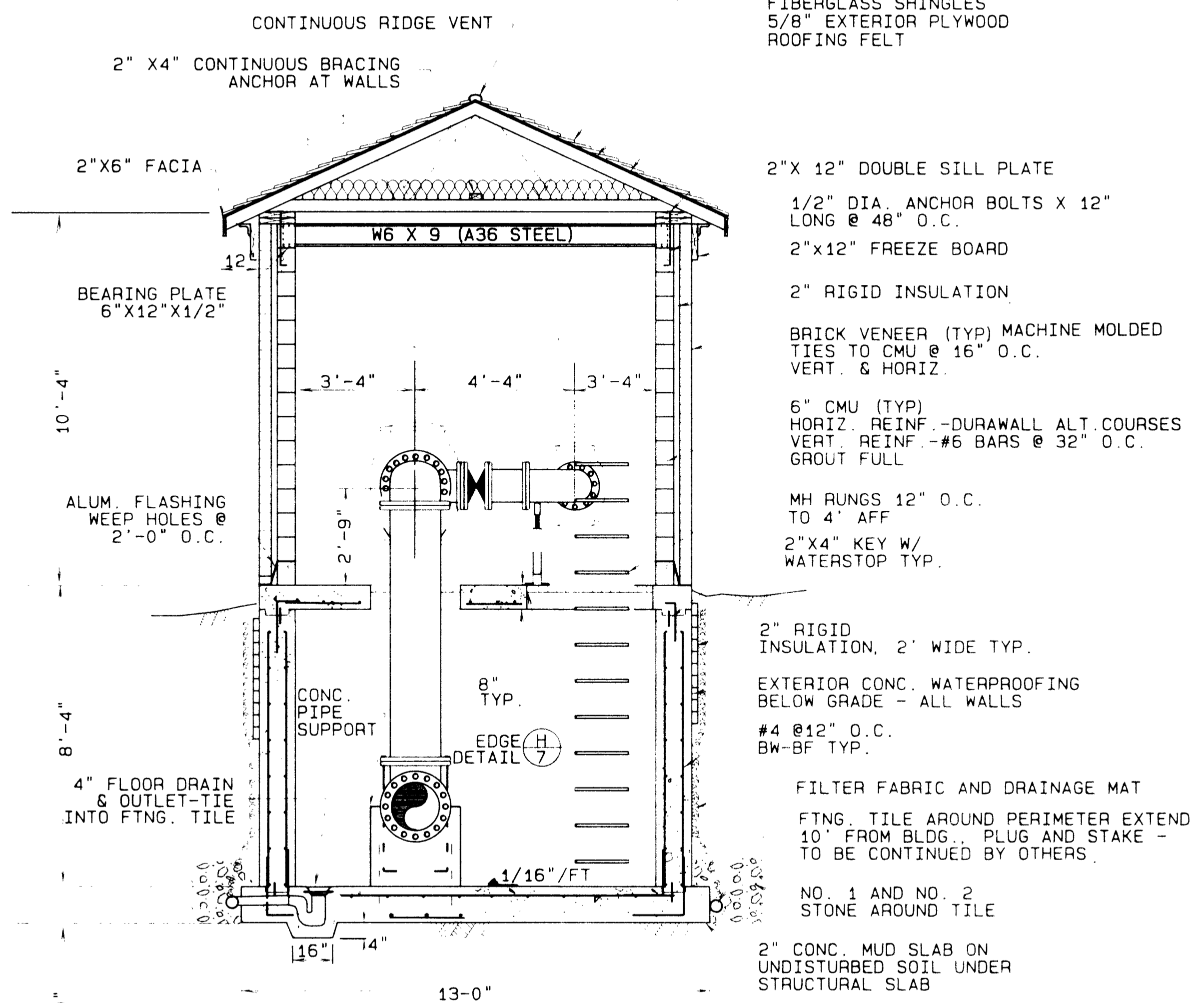


NOTE:  
 WOOD TRUSSES @ 20" O.C.  
 DESIGN LL=40 PSF  
 DESIGN DL=10 PSF TOP CORD  
 DESIGN DL=5 PSF BOTTOM CORD



A  
 14  
 SECT. A-A  
 SCALE: 3/8"=1'-0"



B  
 14  
 SECT. B-B  
 SCALE: 3/8"=1'-0"

FIBERGLASS SHINGLES  
 5/8" EXTERIOR PLYWOOD  
 ROOFING FELT

- 1) 2" MINIMUM CLEAR COVER UNLESS OTHERWISE NOTED
- 2) ALL CLASS I CONCRETE (3500 PSI) UNLESS OTHERWISE NOTED
- 3) ALL BARS TO CARRY AROUND CORNER 400, UNLESS OTHERWISE NOTED.
- 4) ALL SPLICES TO BE 400.
- 5) #4 BARS AROUND ALL OPENINGS, 2" TOP LAYER, 2" BOTTOM LAYER

J. KENNETH FRASER  
 AND ASSOCIATES, P.C.  
 CONSULTING ENGINEERS  
 RENSSELAER, NEW YORK

TOWN OF BETHLEHEM  
 ALBANY COUNTY NEW YORK

PUMP STATION AND  
 PRESSURE REDUCING  
 VALVE STATION

CONTRACT NO. 3G  
 GENERAL CONSTRUCTION  
 AND/OR  
 CONTRACT NO. 3E  
 ELECTRICAL WORK

