

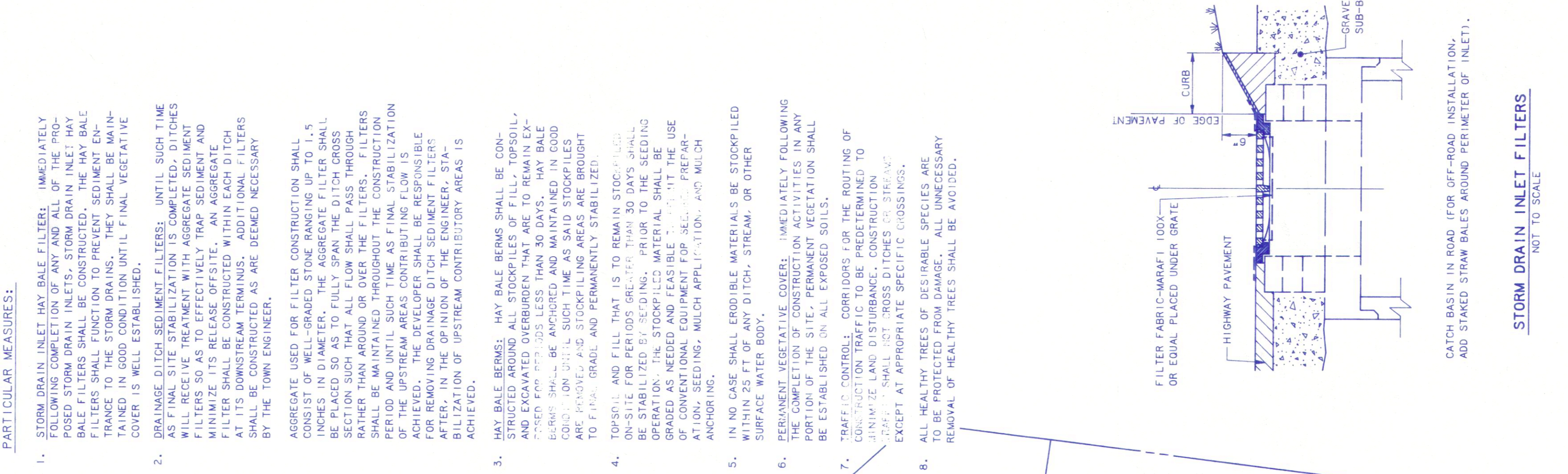
SOIL EROSION AND SEDIMENT CONTROL MEASURES

GENERAL MEASURES:

- DAMAGE TO SURFACE WATERS RESULTING FROM EROSION SHALL BE PREVENTED BY THE CONSTRUCTION OF EROSION CONTROL MEASURES AT THE TIME OF DISTURBED AREAS AND BY REMOVAL OF SEDIMENT FROM CONSTRUCTION SITE DISCHARGES.
- CONSTRUCTION OF EROSION CONTROL MEASURES SHALL BE PRESERVED UNTIL EXISTING VEGETATION HAS BEEN REESTABLISHED.
- SITE PREPARATION ACTIVITIES SHALL BE PLANNED TO PREVENT EROSION AND SEDIMENTATION OF SOIL DURING CONSTRUCTION.
- CONSTRUCTION OF EROSION CONTROL MEASURES SHALL BE ESTABLISHED PRIOR TO THE START OF CONSTRUCTION OF ANY DISTURBED AREAS AND SHALL NOT BE REMOVED UNTIL THE CONSTRUCTION OF PERMANENT EROSION CONTROL MEASURES IS COMPLETE.
- CONSTRUCTION OF EROSION CONTROL MEASURES SHALL BE MAINTAINED THROUGHOUT THE CONSTRUCTION PERIOD AND UNTIL SUCH TIME AS FINAL STABILIZATION MEASURES ARE IN PLACE.

PARTICULAR MEASURES:

- STORM DRAIN INLET MAY BE FILTERED IMMEDIATELY FOLLOWING COMPLETION OF ANY AND ALL OF THE PROPOSED CONSTRUCTION. THE FILTER SHALL BE A 1/2" MESH METAL SCREEN. THE MAY BE CONSTRUCTED AS A SAND TRAP OR A SAND AND GRAVEL TRAP. THE SAND TRAP SHALL BE MAINTAINED THROUGHOUT THE CONSTRUCTION PERIOD AND UNTIL SUCH TIME AS FINAL STABILIZATION MEASURES ARE IN PLACE.
- CONSTRUCTION OF EROSION CONTROL MEASURES SHALL BE MAINTAINED THROUGHOUT THE CONSTRUCTION PERIOD AND UNTIL SUCH TIME AS FINAL STABILIZATION MEASURES ARE IN PLACE.
- CONSTRUCTION OF EROSION CONTROL MEASURES SHALL BE MAINTAINED THROUGHOUT THE CONSTRUCTION PERIOD AND UNTIL SUCH TIME AS FINAL STABILIZATION MEASURES ARE IN PLACE.
- CONSTRUCTION OF EROSION CONTROL MEASURES SHALL BE MAINTAINED THROUGHOUT THE CONSTRUCTION PERIOD AND UNTIL SUCH TIME AS FINAL STABILIZATION MEASURES ARE IN PLACE.
- CONSTRUCTION OF EROSION CONTROL MEASURES SHALL BE MAINTAINED THROUGHOUT THE CONSTRUCTION PERIOD AND UNTIL SUCH TIME AS FINAL STABILIZATION MEASURES ARE IN PLACE.



SEDIMENT CONTROL DETAIL
NOT TO SCALE

STORM DRAIN INLET FILTERS
NOT TO SCALE

TOWN OF BETHELEHEM
PLANNING BOARD
ALBANY COUNTY, NEW YORK

FINAL PLAT APPROVAL
Was signed by the duly authorized officer of the Planning Board, this day of August, 1999.

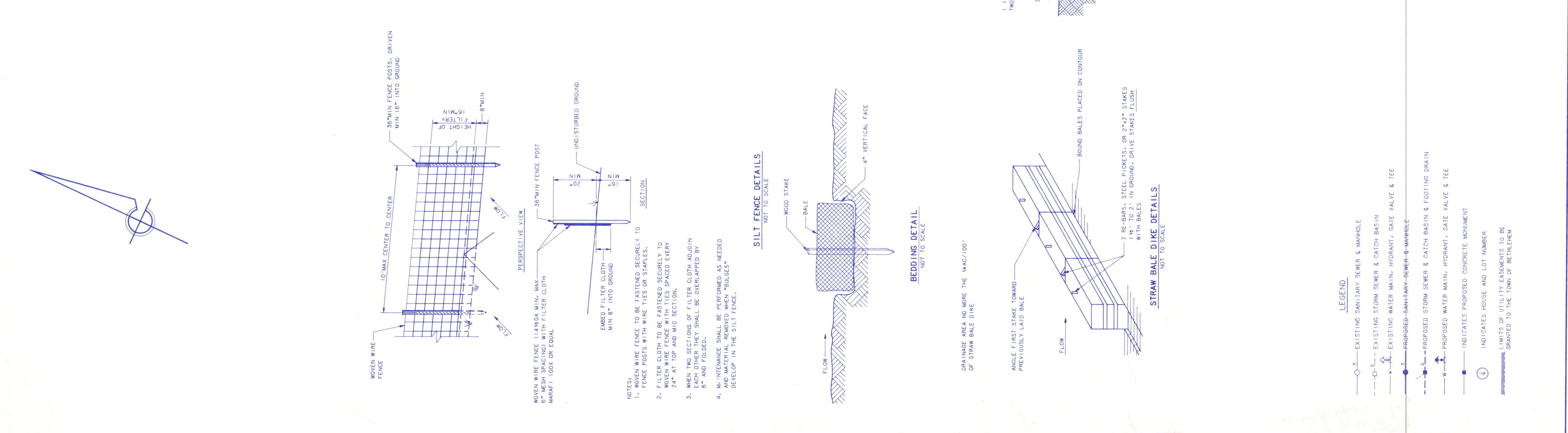
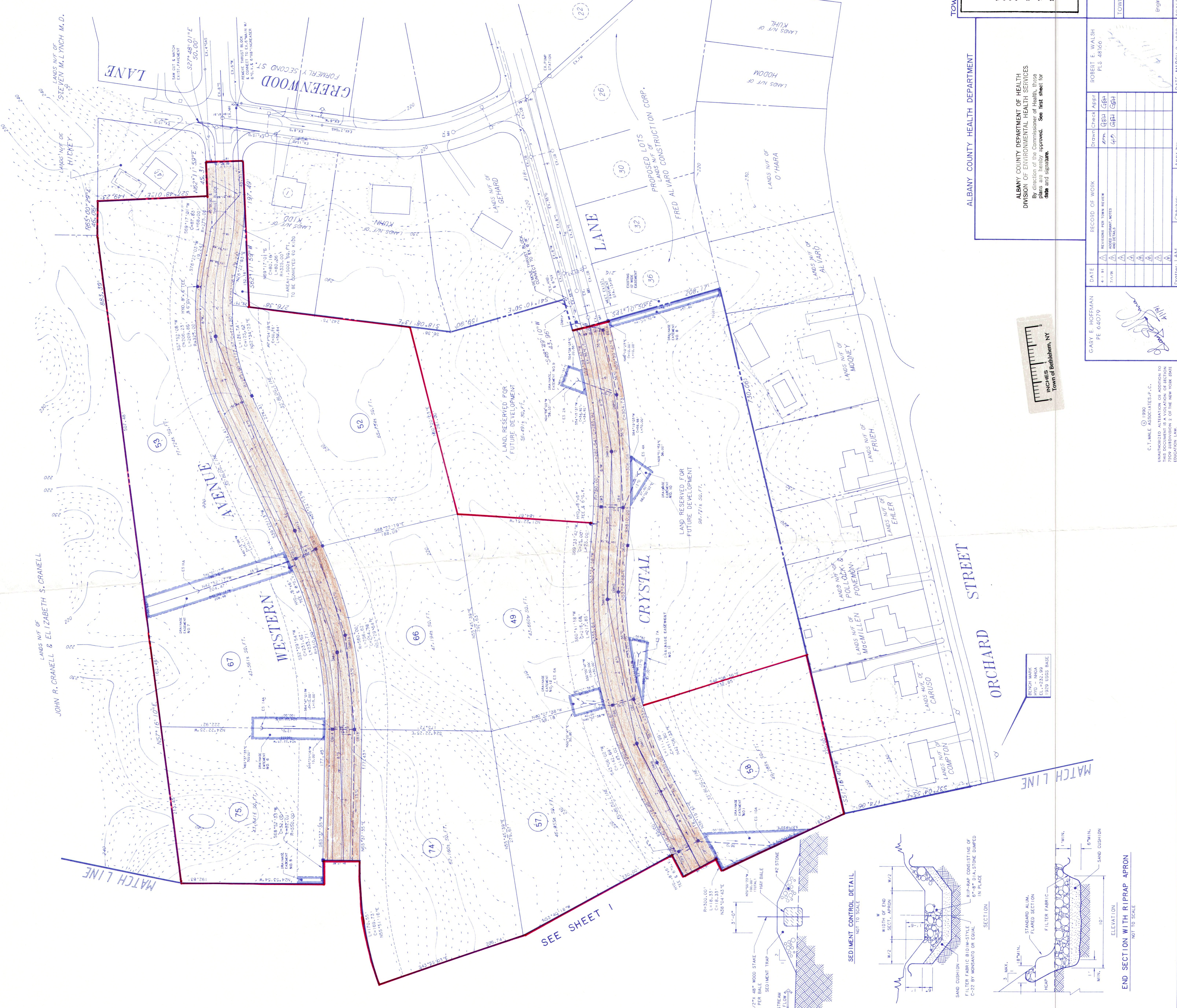
Signature: *[Signature]*
Title: *[Title]*
Date: AUG - 6 1999

Box also Certificate of Approval of Final Plat No. 134-F

DEVONSHIRE HILLS
COUNTY OF ALBANY

C. T. MALE ASSOCIATES, P.C.
50 Century Hill Drive P.O. Box 727, Latham, NY 12110
(518) 785-0976
Engineering - Surveying - Architecture - Landscape Architecture
Laboratory Services - Computer Services

SCALE: 1" = 50'
PROJ. NO. 88-1743
SHEET 2 OF 11
DWG. NO. 89-1281



ALBANY COUNTY HEALTH DEPARTMENT

ALBANY COUNTY DEPARTMENT OF HEALTH
DIVISION OF ENVIRONMENTAL HEALTH SERVICES
By direction of the Commissioner of Health, these plans are hereby approved. See next sheet for date and signature.

Signature: *[Signature]*
Title: *[Title]*
Date: *[Date]*

DATE	RECORD OF WORK	APPROVED	APPROVED	APPROVED	APPROVED
7/29/99	RECORDED FOR TOWN REVIEW	APPROVED	APPROVED	APPROVED	APPROVED
7/29/99	RECORDED FOR TOWN REVIEW	APPROVED	APPROVED	APPROVED	APPROVED
7/29/99	RECORDED FOR TOWN REVIEW	APPROVED	APPROVED	APPROVED	APPROVED
7/29/99	RECORDED FOR TOWN REVIEW	APPROVED	APPROVED	APPROVED	APPROVED
7/29/99	RECORDED FOR TOWN REVIEW	APPROVED	APPROVED	APPROVED	APPROVED

Drifter: LAM
Checker:
Apprby:

INCHES
Town of Bethlehem, NY

© 1990
C. T. MALE ASSOCIATES, P.C.
UNAUTHORIZED ALTERATION OR ADDITION TO THIS PLAN IS PROHIBITED.
TOWN SUPERVISOR 2 OF THE NEW YORK STATE OCCUPATION LAW.

END SECTION WITH RIP RAP APRON
NOT TO SCALE

LEGEND

- EXISTING SANITARY SEWER & MANHOLE
- EXISTING STORM SEWER & CATCH BASIN
- EXISTING WATER MAIN, HYDRANT, GATE VALVE & TEE
- PROPOSED SANITARY SEWER & MANHOLE
- PROPOSED STORM SEWER & CATCH BASIN & FOOTING DRAIN
- PROPOSED WATER MAIN, HYDRANT, GATE VALVE & TEE
- INDICATES PROPOSED CONCRETE MONUMENT
- INDICATES HOUSE AND LOT NUMBER
- LIMITS OF UTILITY EASEMENTS TO BE GRANTED TO THE TOWN OF BETHELEHEM