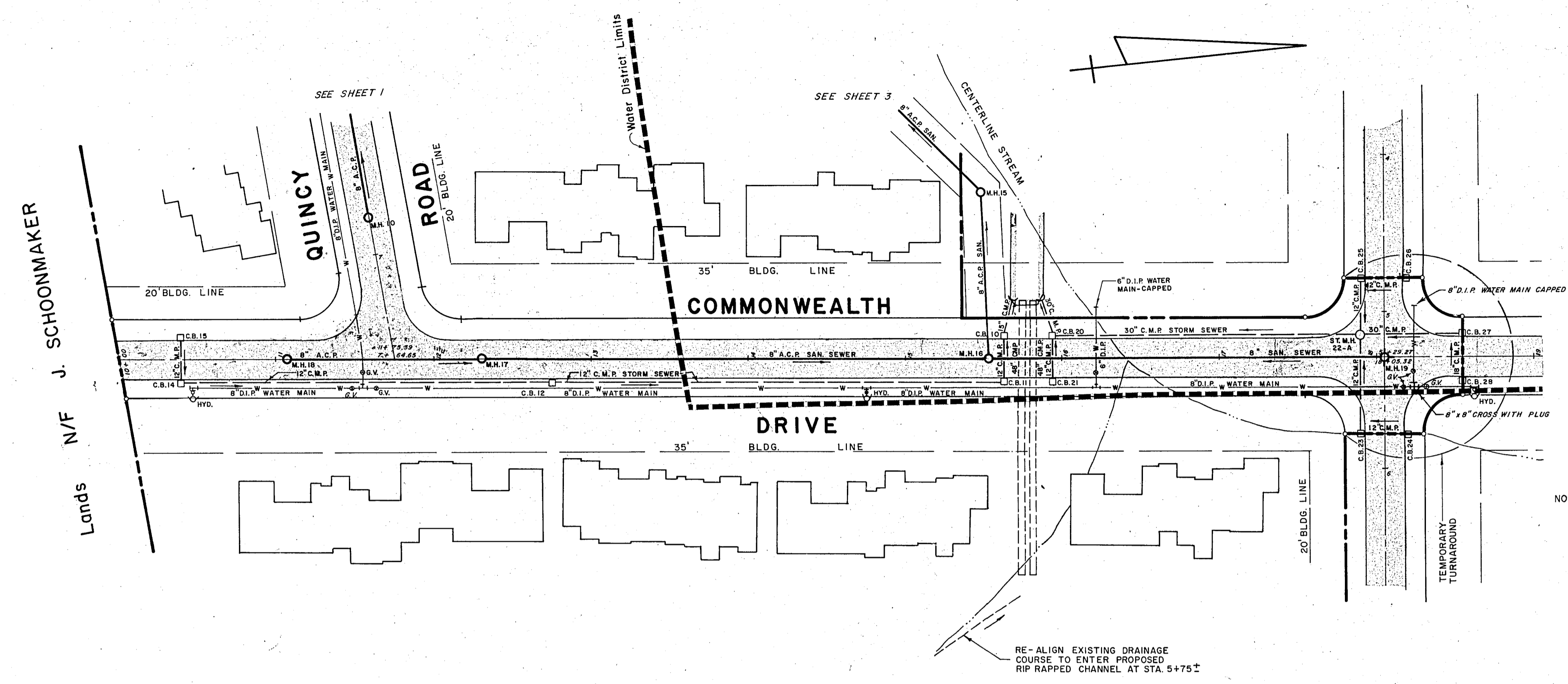
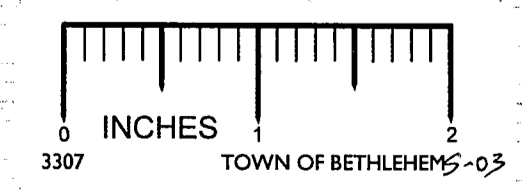
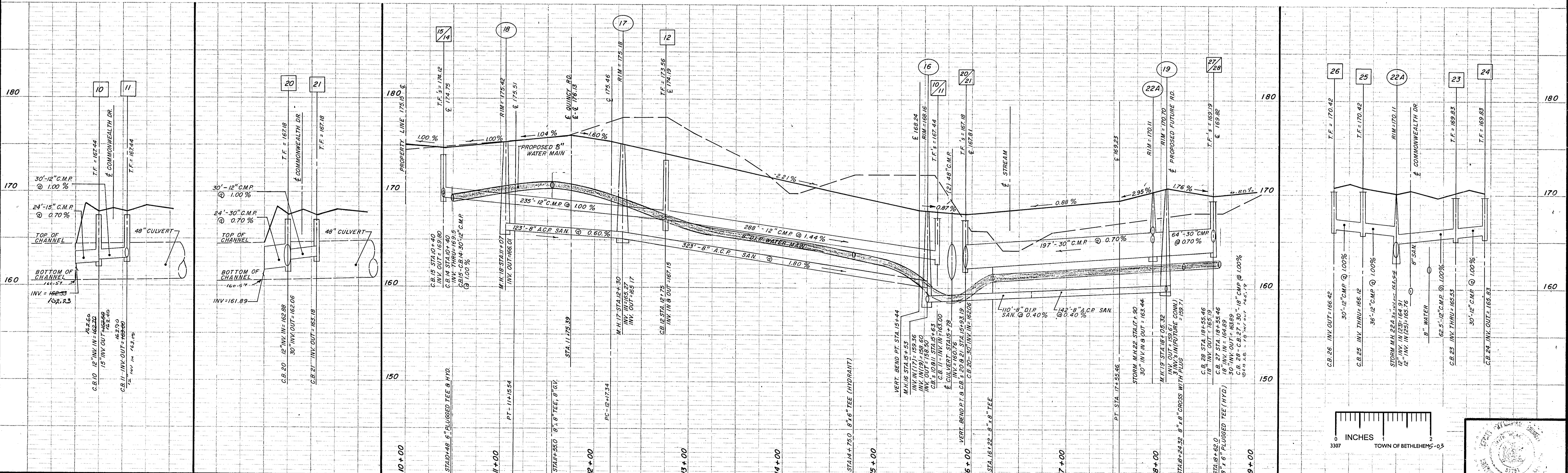


DATE	RECORD OF WORK - CON'D.	Drawn	Check	Appr.
2/28/80	LOWERED QUINCY ROAD INTERSECTION BY 1.50' LOWERED FUTURE STREET INTERSECTION BY 0.50' LOWERED SAN, STORM AND WATER.		D.B.S.	J.E.F.
4/21/80	ADDED & ROAD GRADES THROUGH INTERSECTIONS		G.P.D.	J.E.F.



NOTE: M.H. 19 - PROVIDE 3 HOLES (BRICKED & MORTERED) AT INV. 159.71 FOR FUTURE 8" CONNECTIONS.

RE-ALIGN EXISTING DRAINAGE COURSE TO ENTER PROPOSED RIP RAPPED CHANNEL AT STA. 5+75'



**C.T. MALE ASSOCIATES, P.C.**  
3000 TROY ROAD, SCHENECTADY, N.Y. 12309  
PROFESSIONAL ENGINEERS LAND SURVEYORS LAND PLANNING CONSULTANTS

DATE	RECORD OF WORK	Drawn	Check	Appr.	DATE	RECORD OF WORK	Drawn	Check	Appr.
11/8/77	REVISED ROAD INTERSECTION DETAIL, REVISED C.B. 12, ADDED WATER MAIN PROFILE, REVISED SANITARY SEWER PROFILE.		J.E.F.		3/10/78	REVISED STORM SEWER		J.E.F.	
11/10/77	REVISED CULVERT		J.E.F.		2/23/78	ADDED STANDARD DETAIL SHOTS TO SET		J.E.F.	
11/10/77	ADDED GUST NOTICES		J.E.F.		3/2/78	CHANGED WATER MAIN FROM C.I.P. TO D.I.P.		G.P.D.	J.E.F.
1/3/78	REVISED SANITARY		J.E.F.		4/15/78	REVISED WATER MAIN DEPTH		J.E.F.	J.E.F.
1/17/80	REVISED SANITARY		J.E.F.		1/17/80	REVISED ROAD GRADE & LOWERED STORM SEWER		J.E.F.	J.E.F.

DRAWN BY: [Blank]  
CHECKED BY: [Blank]  
APPROVED BY: **RHEIN VOGEL, JR.**  
LICENSE NO. **P.E. 31,751**

TOWN OF BETHLEHEM  
COUNTY ALBANY  
DATE **OCTOBER 25, 1977**  
SCALES: HOR. 1 inch = 50 feet; VERT. 1 inch = 5 feet

**FINAL - APRIL 30, 1980 - R.E.R.**  
**CHADWICK SQUARE**  
**SECTION ONE**  
**ROAD & UTILITY PROFILE**

DWG NO. 77-228  
Sheet 2 of 13