

# MAP OF PROPERTY

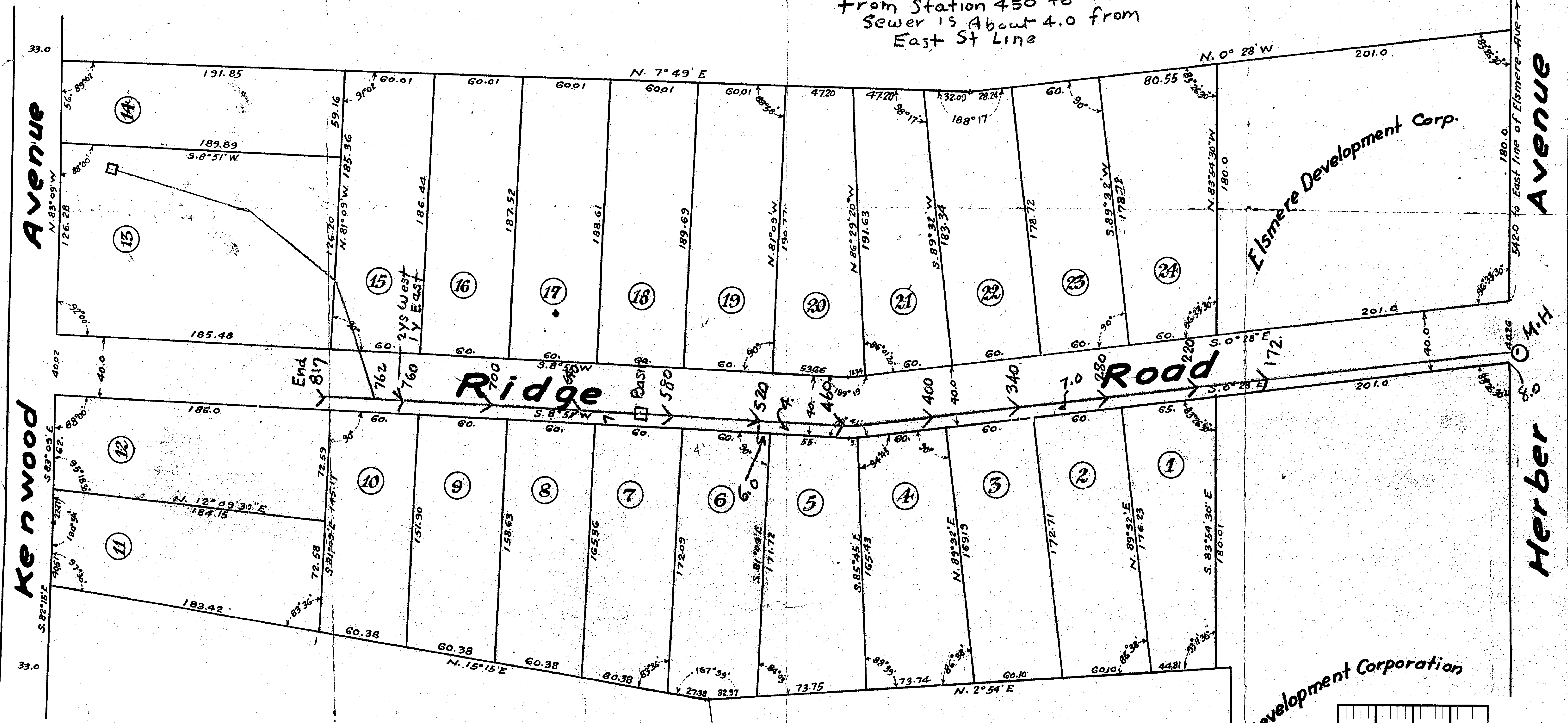
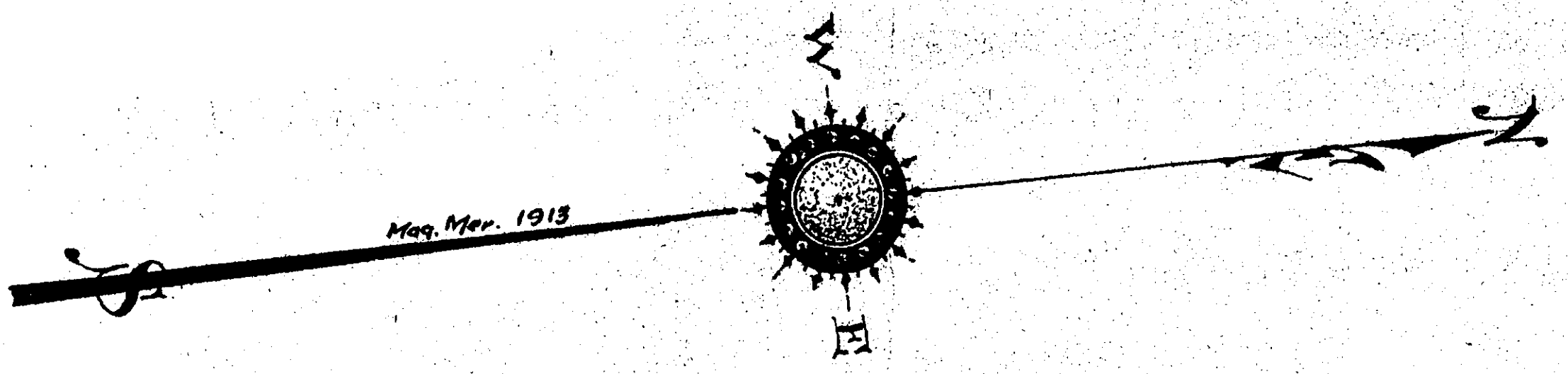
**FRED M. EARING**

Situated at  
**Elsmere, Town of Bethlehem,**  
**ALBANY Co., N.Y.**  
 Surveyed May 1 1923  
 Nordin J. Shambrook  
 Civ. Engr. & Survr.  
 467 Broadway, Albany N.Y.

**NOTE**  
 Source of Title  
 Groesbeck to Van Wie  
 Book of Deeds-416 - page 89  
 Book of Deeds-486 - page 78

Scale: 50 feet to 1. inch

Note for Sewer  
 from Station 450 to 550  
 from Station 450 to 550  
 from Station 450 to 550  
 East St Line



Elsmere Development Corporation

