

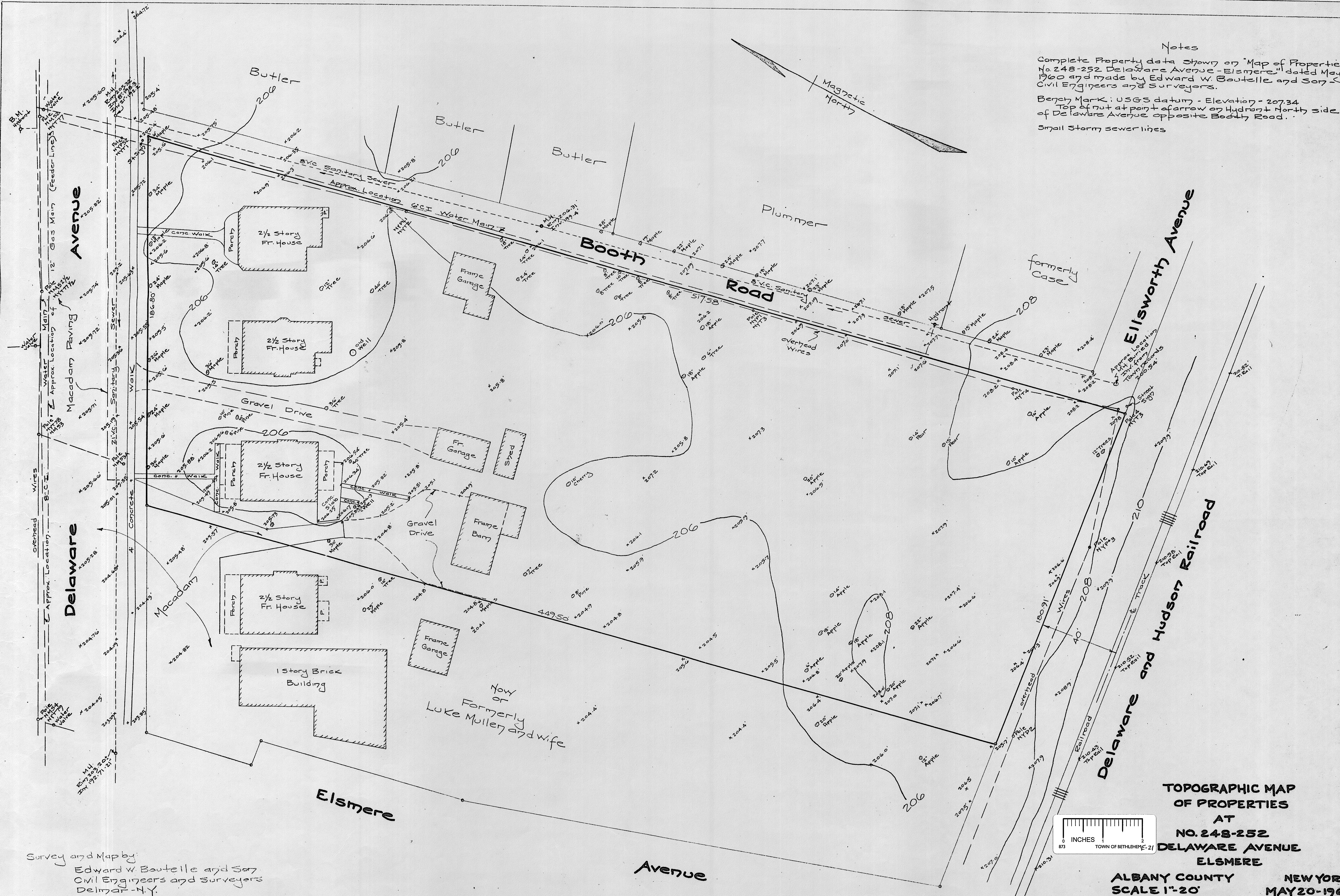
Notes

Complete Property data shown on "Map of Properties at No. 248-252 Delaware Avenue - Elsmere" dated May 20, 1960 and made by Edward W. Boutelle and Son, Civil Engineers and Surveyors.

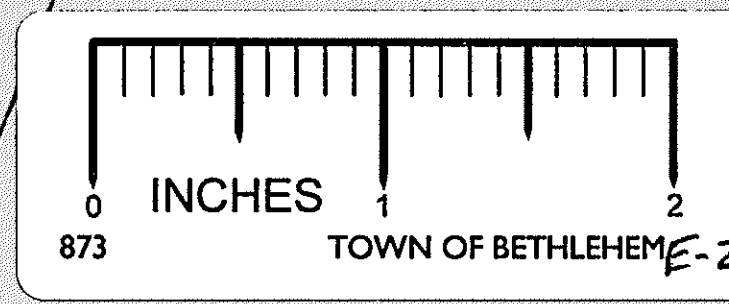
Bench Mark: USGS datum - Elevation - 207.34  
Top of nut at point of arrow on Hydrant North side of Delaware Avenue opposite Booth Road.

Small Storm sewer lines

Magnetic North



Survey and Map by:  
Edward W. Boutelle and Son  
Civil Engineers and Surveyors  
Delmar, N.Y.



TOPOGRAPHIC MAP  
OF PROPERTIES  
AT  
NO. 248-252  
DELAWARE AVENUE  
ELSMERE

ALBANY COUNTY NEW YORK  
SCALE 1"=20' MAY 20-1960