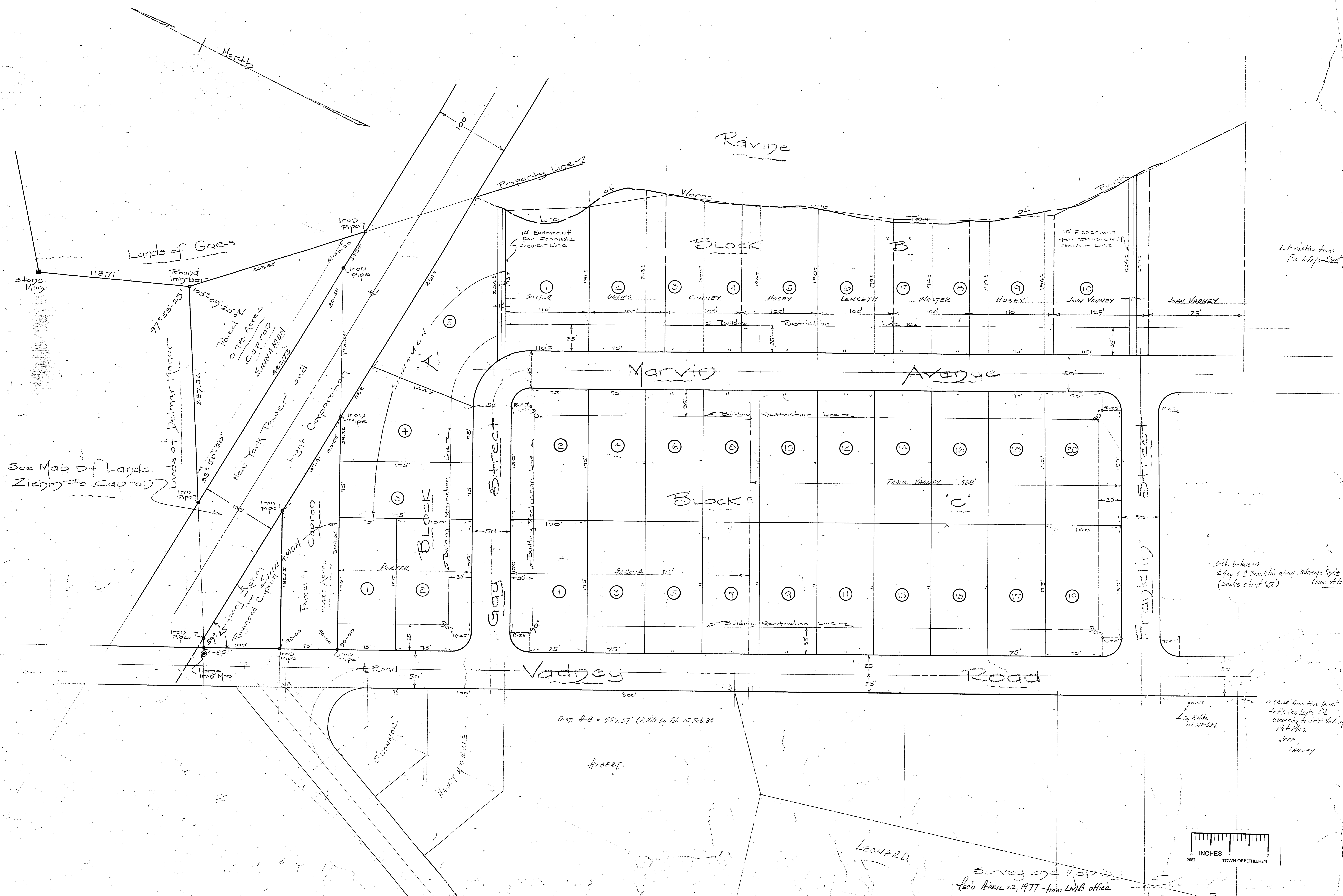


Map of
 Part of Property of
 Frank M. Vadney
 Delmar - Albany Co. - New York
 Scale 1"=50'
 Feb. 1, 1946



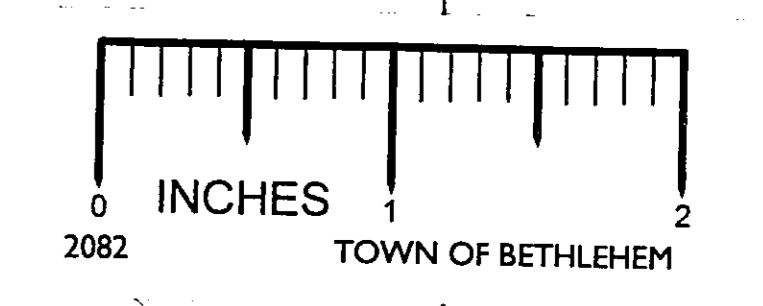
See Map of Lands
 Zichy to Caprod

Lot widths from
 Tax Maps - Sheet 96.00

Dist. between
 Gay & Franklin along Vadney Road
 (seeks about 588')
 (sum of lot widths)

Dist. A-B = 555.37' (A.M. by Tel. 15 Feb. 34)

1244.14 from this point
 to Pt. Van Dyke Rd.
 according to Jeff Vadney
 Plat Plan
 Jeff
 Vadney



Survey and Map of
 Recd April 22, 1947 - from LMB office