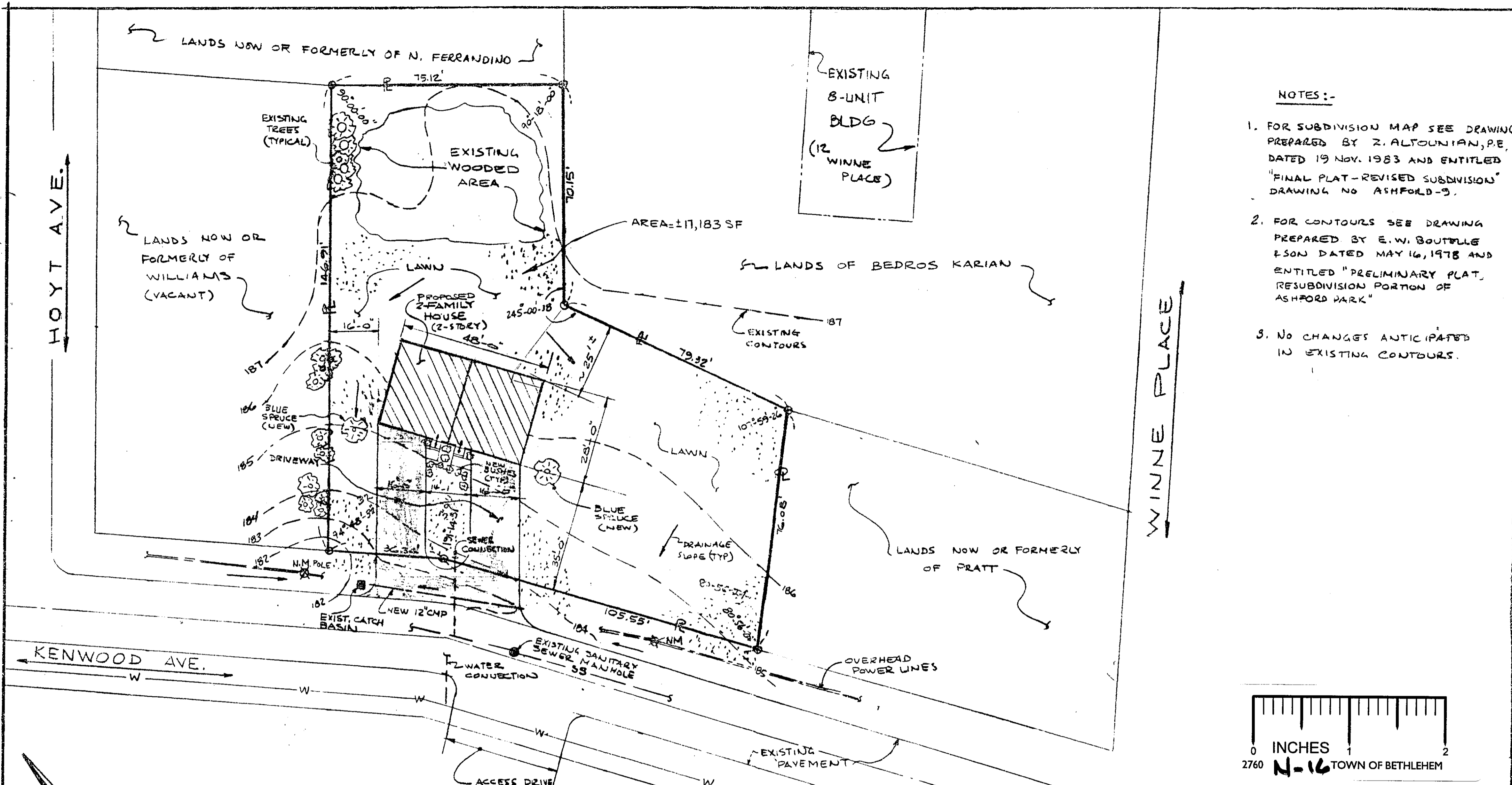


NOTES:-

1. FOR SUBDIVISION MAP SEE DRAWING PREPARED BY Z. ALTOUNIAN, P.E., DATED 19 NOV. 1983 AND ENTITLED "FINAL PLAT-REVISED SUBDIVISION" DRAWING NO. ASHFORD-9.
2. FOR CONTOURS SEE DRAWING PREPARED BY E.W. BOUTELLE ESON DATED MAY 16, 1978 AND ENTITLED "PRELIMINARY PLAT, RESUBDIVISION PORTION OF ASHFORD PARK"
3. NO CHANGES ANTICIPATED IN EXISTING CONTOURS.



SITE PLAN - 2-FAM. HOUSE	
ENGINEER: Z. ALTOUNIAN	23 KENWOOD AVE. TOWN OF BETHLEHEM, N.Y.
SCALE: 1" = 30'-0"	MADE FOR (OWNER) BEDROS KARIAN, 20 WINNE PL, GLENMONT, NY
DATE 23 NOV. 1983	DRAWING No. ASHFORD - 10
	REV. 0



23 NOV 1983

900-17-39

