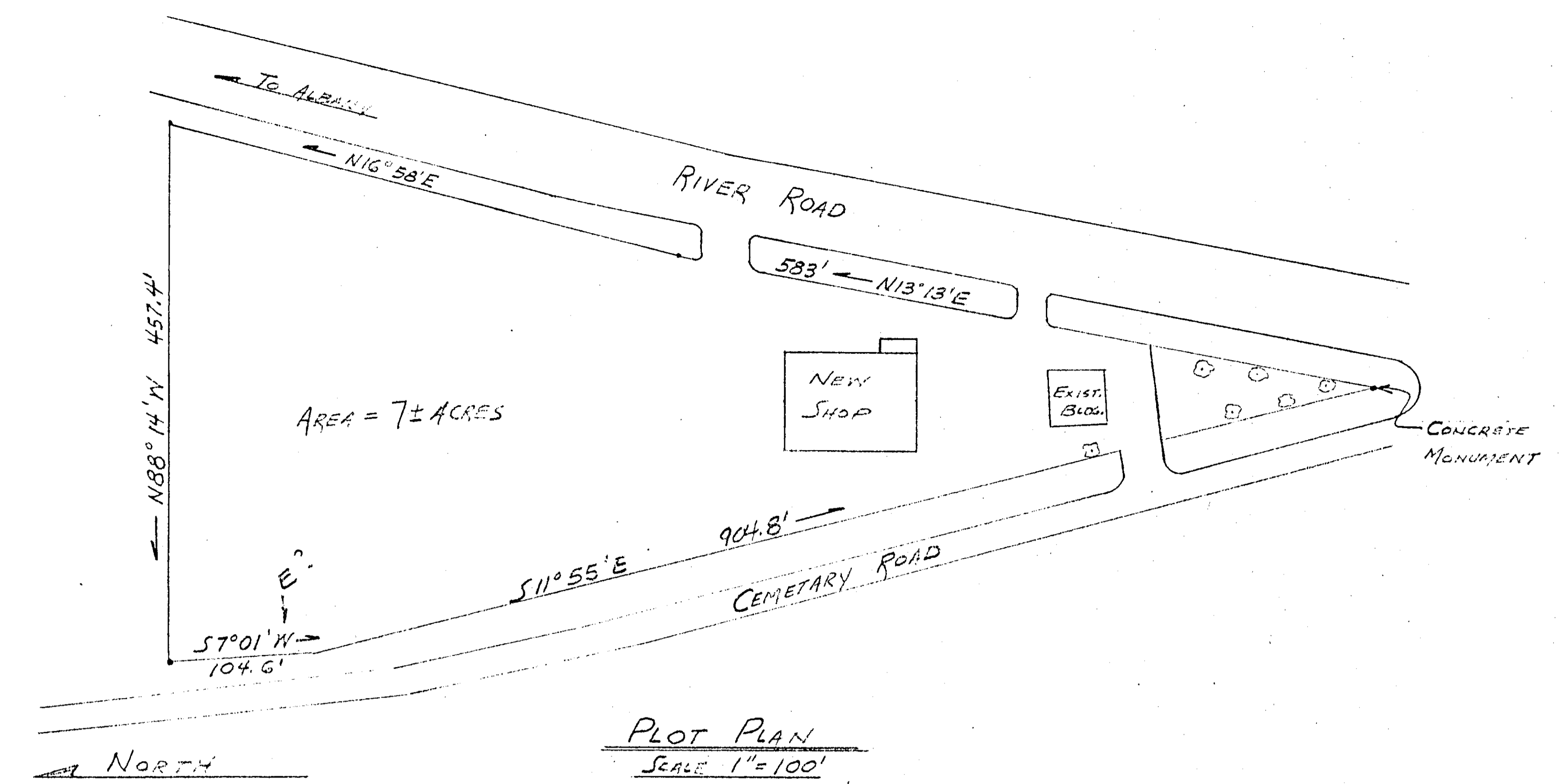
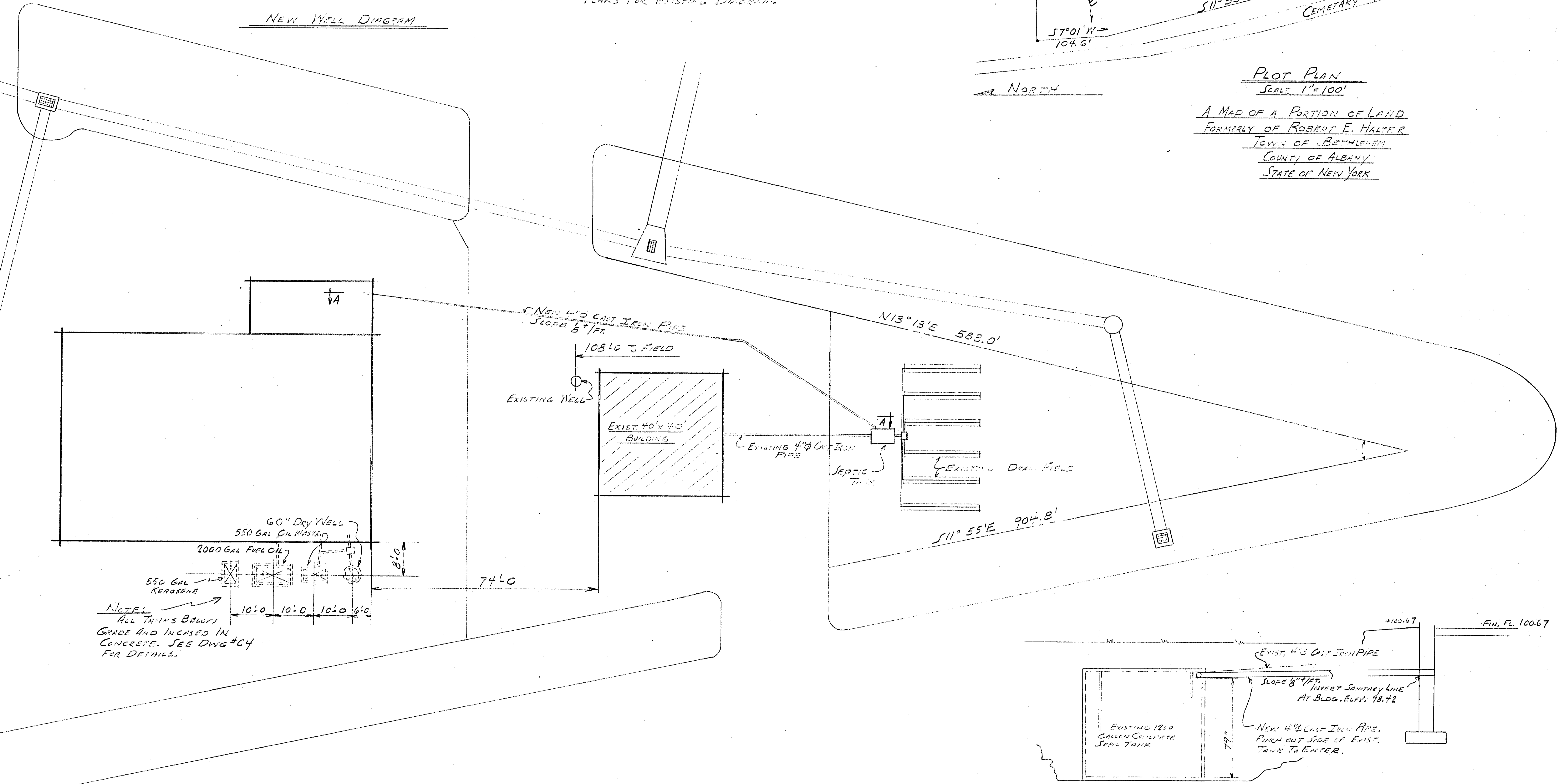


NOTE:
 1. EXISTING SERVICE TO OFFICE BLDG. INCREASED, WILL REMAIN IN S.W. CORNER.
 2. SEE DWG #2 OF OFFICE SANITARY PLANS FOR EXISTING DRAINAGE.

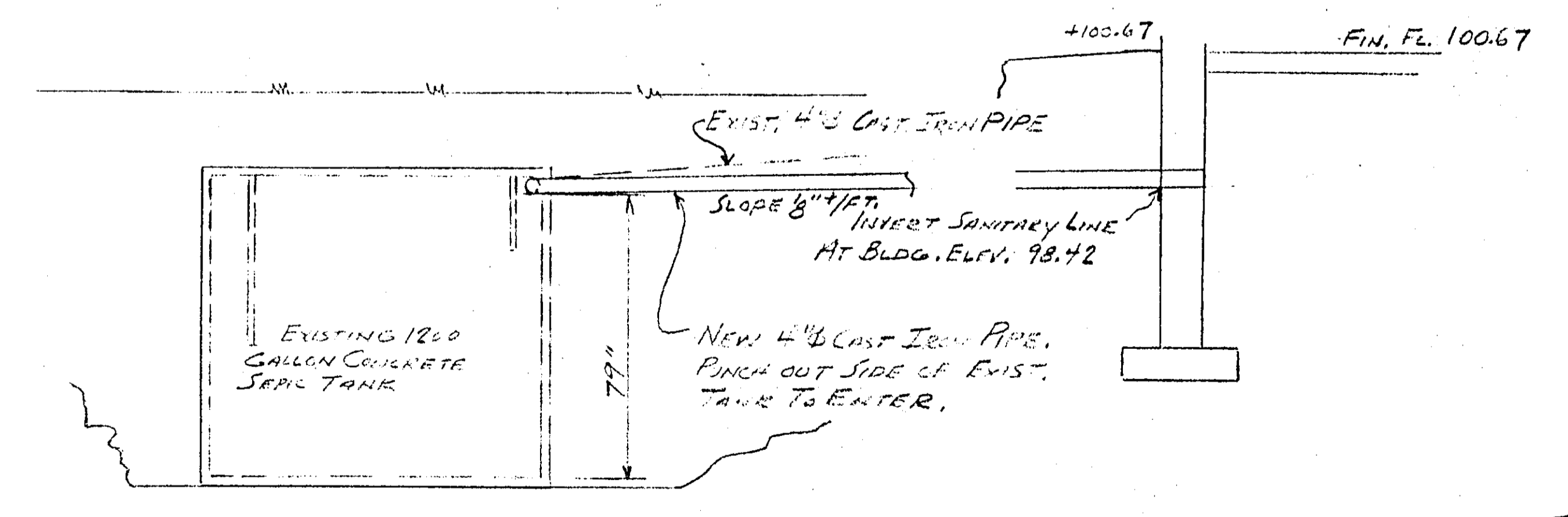


Plot Plan
 Scale 1"=100'
 A MAP OF A PORTION OF LAND FORMERLY OF ROBERT E. HALTER TOWN OF BETHLEHEM COUNTY OF ALBANY STATE OF NEW YORK

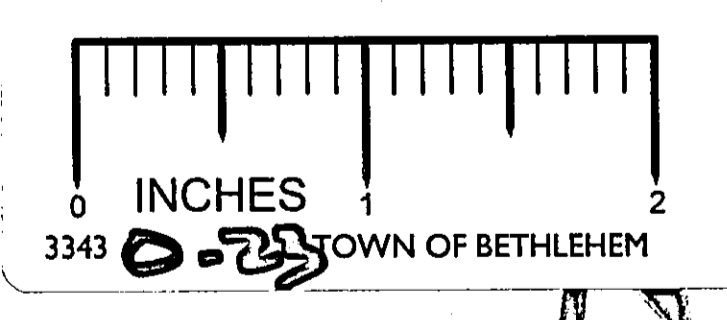


NOTE:
 ALL TANKS BELOW GRADE AND INCREASED IN CONCRETE. SEE DWG #24 FOR DETAILS.

SANITARY PLAN



SECTION A-A
 No Scale



EXISTING DESIGN CRITERIA
 SOIL PERCOLATION RATE IS 0.5 GAL PER SQ. FT. PER DAY. INTENDED USE TO BE THREE WORKERS AT 35 GALS. EACH PER DAY OR 105 GALS. PER DAY. FIELD TO HAVE SIX LATERALS OF 25' EACH BY THREE FEET WIDE OR 450 SQ. FT. TRENCH BOTTOM WITH A CAPACITY OF 225 GALS PER DAY. ENTIRE AREA AS OUTLINED ON PLAN TO BE LEVELLED TO NEW SURFACE OF 90.00. CLEAN CORSE SAND WILL THEN BE PLACED IN TRENCH AND UP TO FIRST GRADE. CONTOURS AS SHOWN ON PLAN A1. IN IMMEDIATE AREA OF DRAINAGE FIELD, CLEAN CORSE SAND WILL BE APPROX. 8'-0" DEEP. PIPE USED FOR DISTRIBUTION WILL BE 4" S.W. ORANGEBURG PIPE USED AS LATERALS IN DRAIN FIELD WILL BE 4" S.W. ORANGEBURG LAYED WITH HOLES DOWN. SEPTIC TANK AND DISTRIBUTION BOX WILL BE APPROX. CONCRETE TYPE AS MADE BY FORT MULLER CO. AS PER SUBMITTAL. GRAVEL IN FIELD TRENCHES WILL BE CLEAN WASHED #2 GRAVEL.

ADDED
 Two Additional Workers At 35 Gals Each Per Day, 70 Gal Added Per Day. Total Workers Five At 35 Gals Each Per Day OR 175 Gals. Per Day. Field Capacity 225 Gals Per Day.

EXISTING WELL DATA
 WELL IS 6" DRILLED TO 400' BY HANSON WELL DRILLING CO. 6" STEEL CASING DOWN TO ROCK AT 60.5'. CASING EXTENDS 24" ABOVE GRADE AND IS EQUIPPED AT TOP WITH MARTINSON WATER TIGHT WELL CAP. PUMP IS SUBMERSIBLE HERMETIC 5/8" I.D. CHURNER TO PUMP 14 GAL PER MINUTE IN BLDG. PIPE INSIDE WELL IS 1 1/2" GALV. STEEL TO POINT 5' BELOW GRADE WHERE CONNECTS TO MARTINSON S-60 PRESS. ADAPTER. FROM THIS POINT TO TANK IN BLDG. PIPE IS 1 1/2" COPPER. AT INLET OF TANK IS CONTROL CENTER VALVE WITH CHECK. ATTACHED TO THIS IS PRESSURE SWITCH AND GAGE AND SHIFTER VALVE. INSIDE 88 GAL TANK IS AUTOMATIC AIR VOLUME CONTROL THAT MAINTAINS 85 GALS. WATER UNDER 4" PRESSURE AT ALL TIMES IN CASE OF PUMP FAILURE. THIS PRESSURE SWITCH IS ALSO TANK SURVEILLANT TO MEET REQUIREMENTS FOR FOUR HOUR MAX. TIME GUARANTEED BY PUMP SUPPLIER.

CHANGES
 REPLACE SUBMERSIBLE PUMP AND HERMETIC 5/8" I.D. CHURNER WITH SUBMERSIBLE PUMP SA 300L. ADD CHECK VALVE BEHIND MARTINSON S-60 PRESS. ADAPTER AND THE OUTSIDE ADAPTER. FROM THIS POINT TO OFFICE BLDG. SERVICE PIPE IS AS SHOWN. TO NEW SHOP BLDG. FOLLOW OFFICE BLDG. PRESSURE, EXCEPT INSIDE TANK WILL BE COPPER. AND CONTROL BOX WILL RUN TO EXISTING CONTROL SYSTEM CENTER.

APPROVED
 NOV 29 1974
 BUILDING INSPECTOR
 TOWN OF BETHLEHEM

SHOP BUILDING
 GLENMONT N.Y.
 A. BOHL CONTRACTING CO.

SANITARY 0-23
 LAND-FINN CONST. CO. INC.
 DRAWN BY - WML & D.F.S.
 SCALE 1"=20'

A2