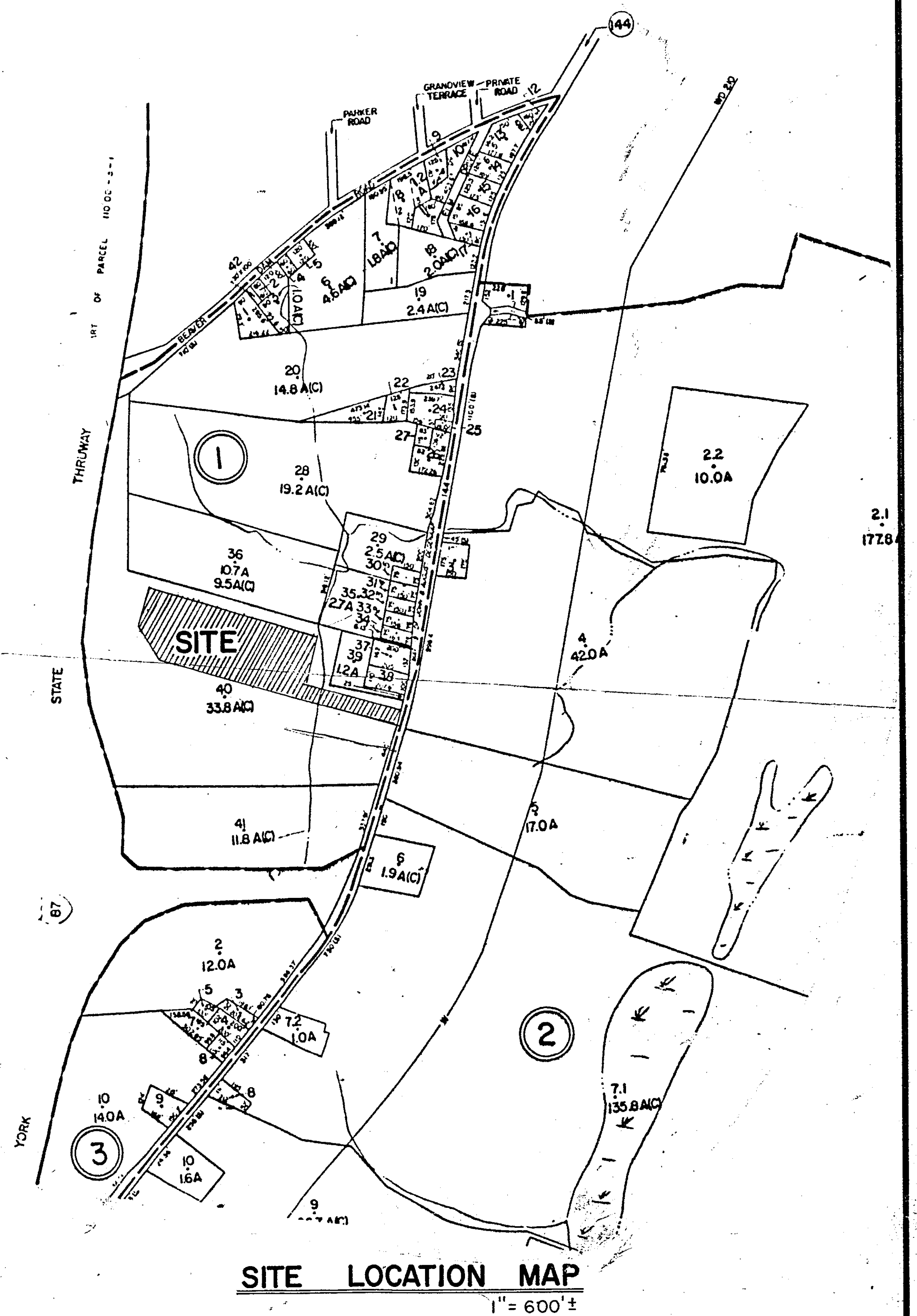
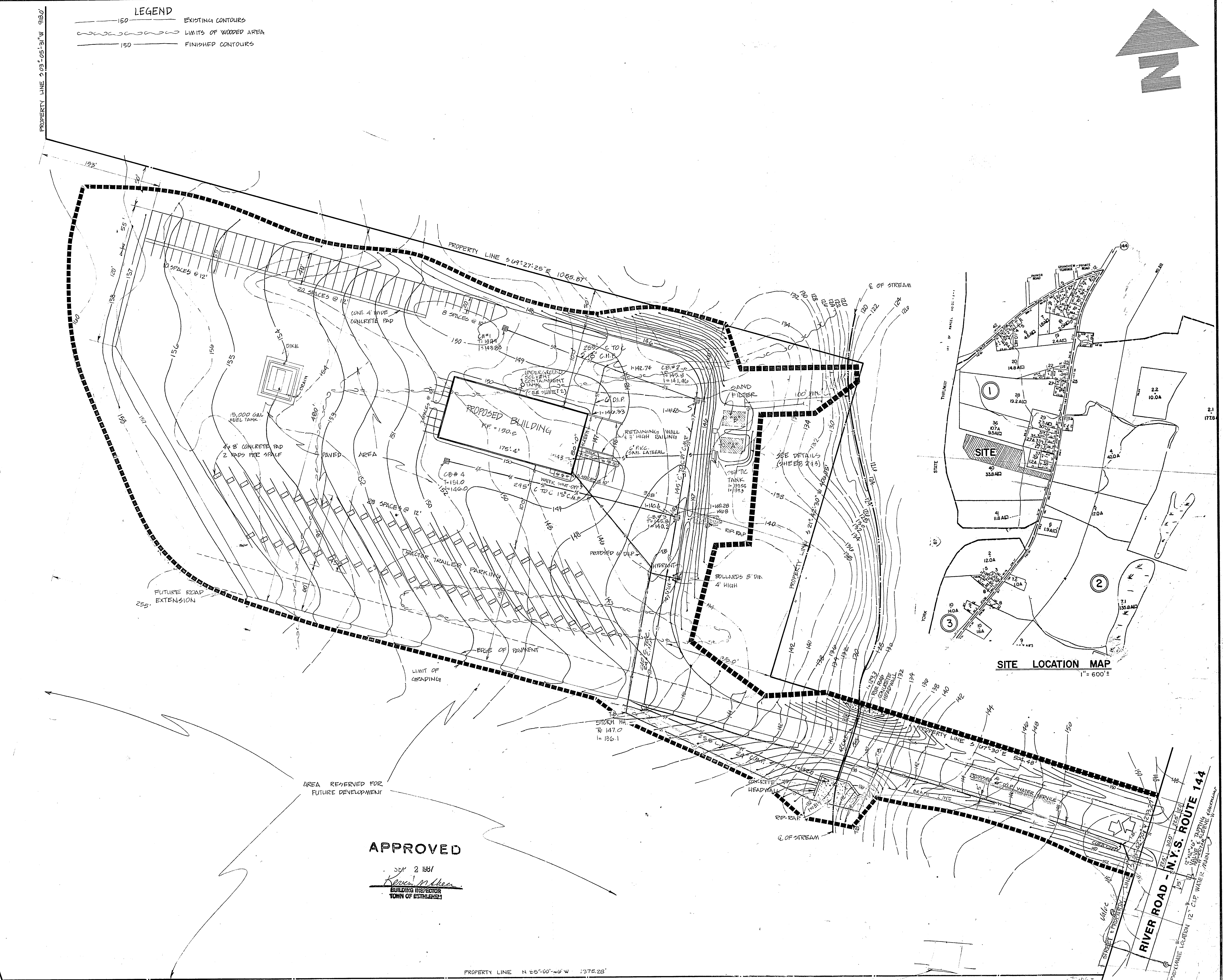


LEGEND
 150 ——— EXISTING CONTOURS
 - - - - - LIMITS OF WOODED AREA
 150 ——— FINISHED CONTOURS

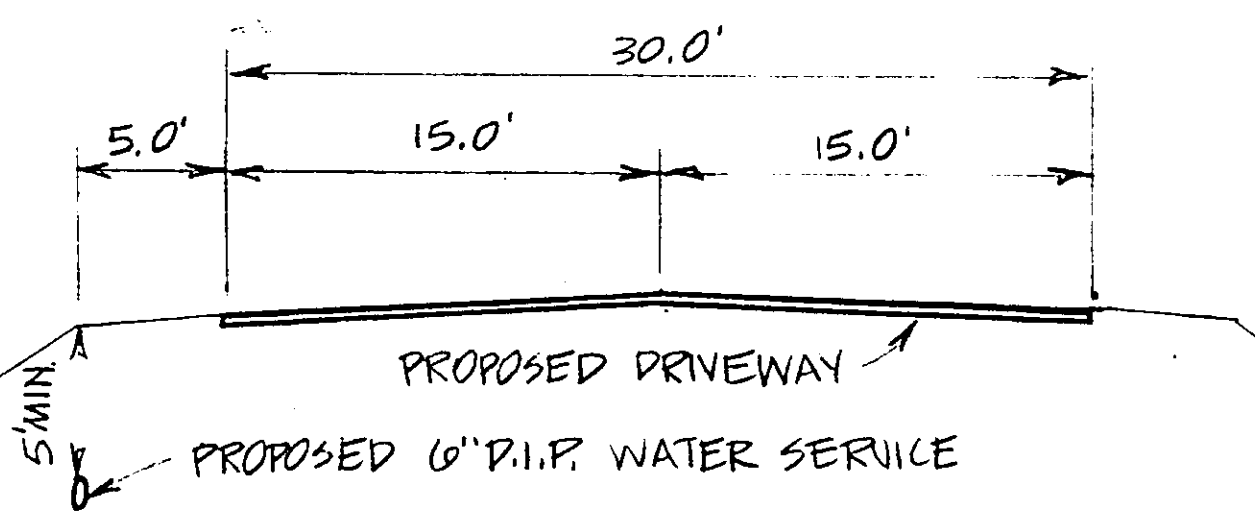


APPROVED

SEP 2 1987
Karen Miller
 BUILDING INSPECTOR
 TOWN OF BETHLEHEM

TYPICAL DRIVEWAY SECTION

NOT TO SCALE



ALBANY COUNTY DEPT. OF HEALTH
 DATE 9/2/87
 These plans for Sewage Disposal
 and Water System Improvements.
 Examined and Approved

Stephen S. Libkowsky
 DIRECTOR, DIVISION OF ENVIRONMENTAL
 HEALTH SERVICES

**PROPOSED SITE PLAN FOR
 B&W TRANSPORTATION
 RIVER ROAD - N.Y.S. ROUTE 144
 TOWN OF BETHLEHEM
 ALBANY COUNTY, N.Y.**

HERSHBERG & HERSHBERG
 CONSULTING ENGINEERS
 LAND SURVEYORS
 19 COLVIN AVENUE
 ALBANY NY

DATE: 4/23/86
 SCALE: 1" = 50'

ALTERATION OF THIS DOCUMENT,
 EXCEPT BY A LICENSED PROFESSIONAL
 ENGINEER OR LAND SURVEYOR, IS ILLEGAL.

BY: W.M. CHK: A.S.
 FILE NO. 86-0688

SHEET 1 OF 2