

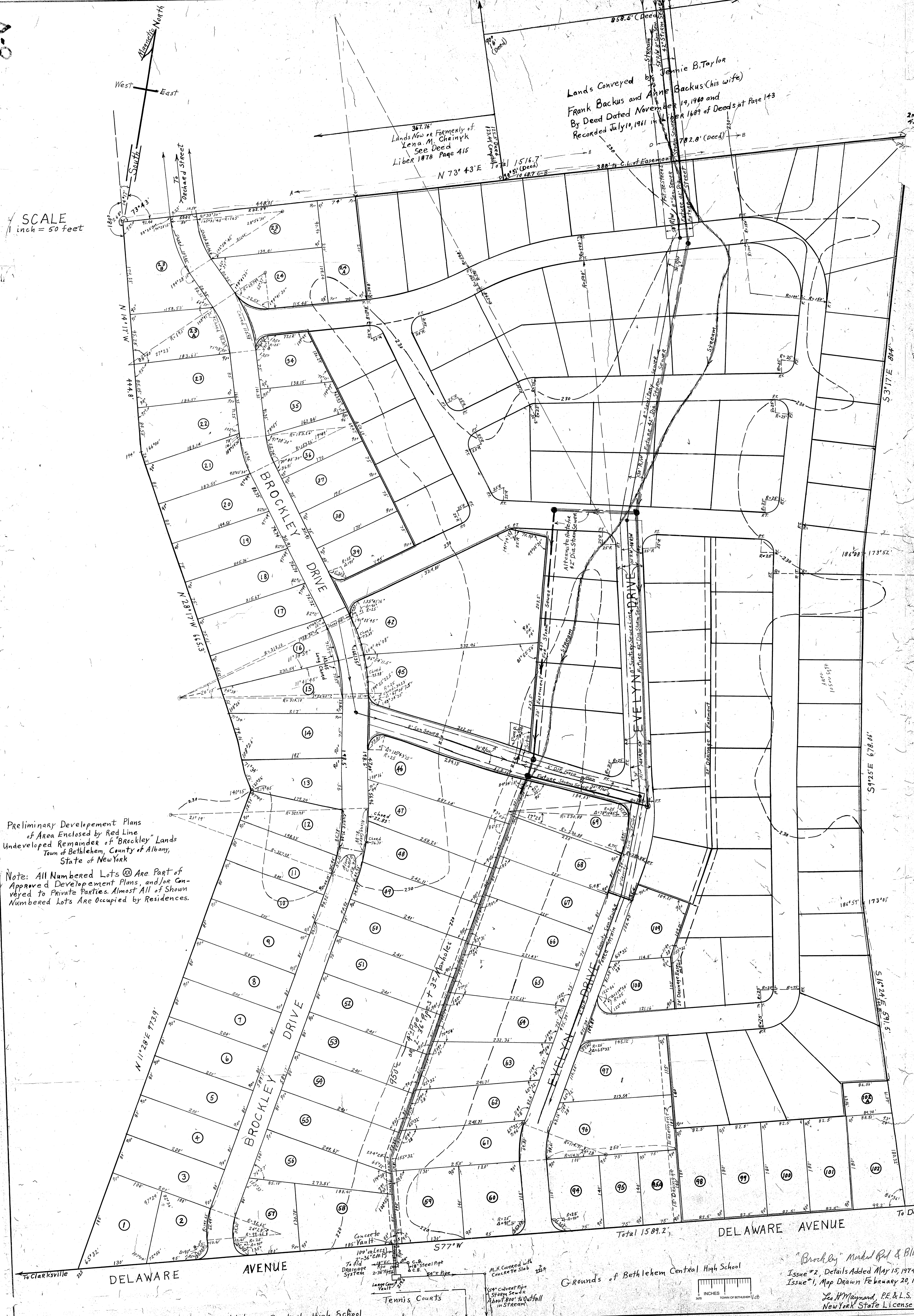
SCALE  
1 inch = 50 feet

Lands Conveyed by Jennie B. Taylor  
Frank Backus and Anne Backus (his wife)  
By Deed Dated November 19, 1940 and  
Recorded July 10, 1961 in Liber 1689 of Deeds at Page 143

367.76'  
Lands Now or Formerly of  
Lena M. Chainyk  
See Deed  
Liber 1878 Page 415

Preliminary Development Plans  
of Area Enclosed by Red Line  
Undeveloped Remainder of "Brockley" Lands  
Town of Bethlehem, County of Albany,  
State of New York

Note: All Numbered Lots (⊗) Are Part of  
Approved Development Plans, and/or Con-  
veyed to Private Parties. Almost All of Shown  
Numbered Lots Are Occupied by Residences.



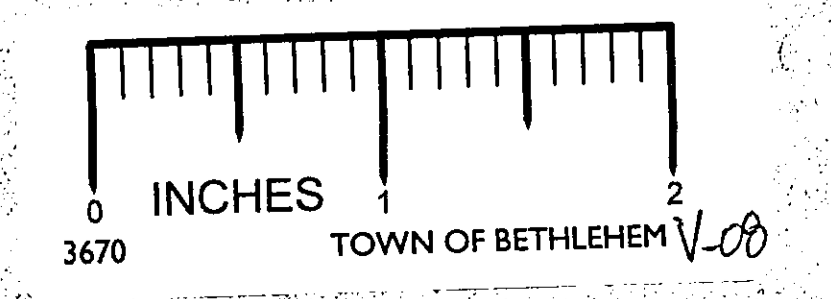
DELAWARE AVENUE

AVENUE

DELAWARE AVENUE

Grounds of Bethlehem Central High School

"Brockley" Marked Red & Blue  
Issue #2, Details Added May 15, 1974  
Issue #1, Map Drawn February 20, 1974  
Leo H. Maynard, P.E. & L.S.  
New York State License #



Concrete 18" Vault  
100' or Less  
To Old Drainage System  
Large Concrete Vault  
M.H. Covered with Concrete Slab  
54" culvert Pipe  
Sewer Sewer  
About 800' to Outfall in Stream  
Tennis Courts

To Clarksville

To Delaware