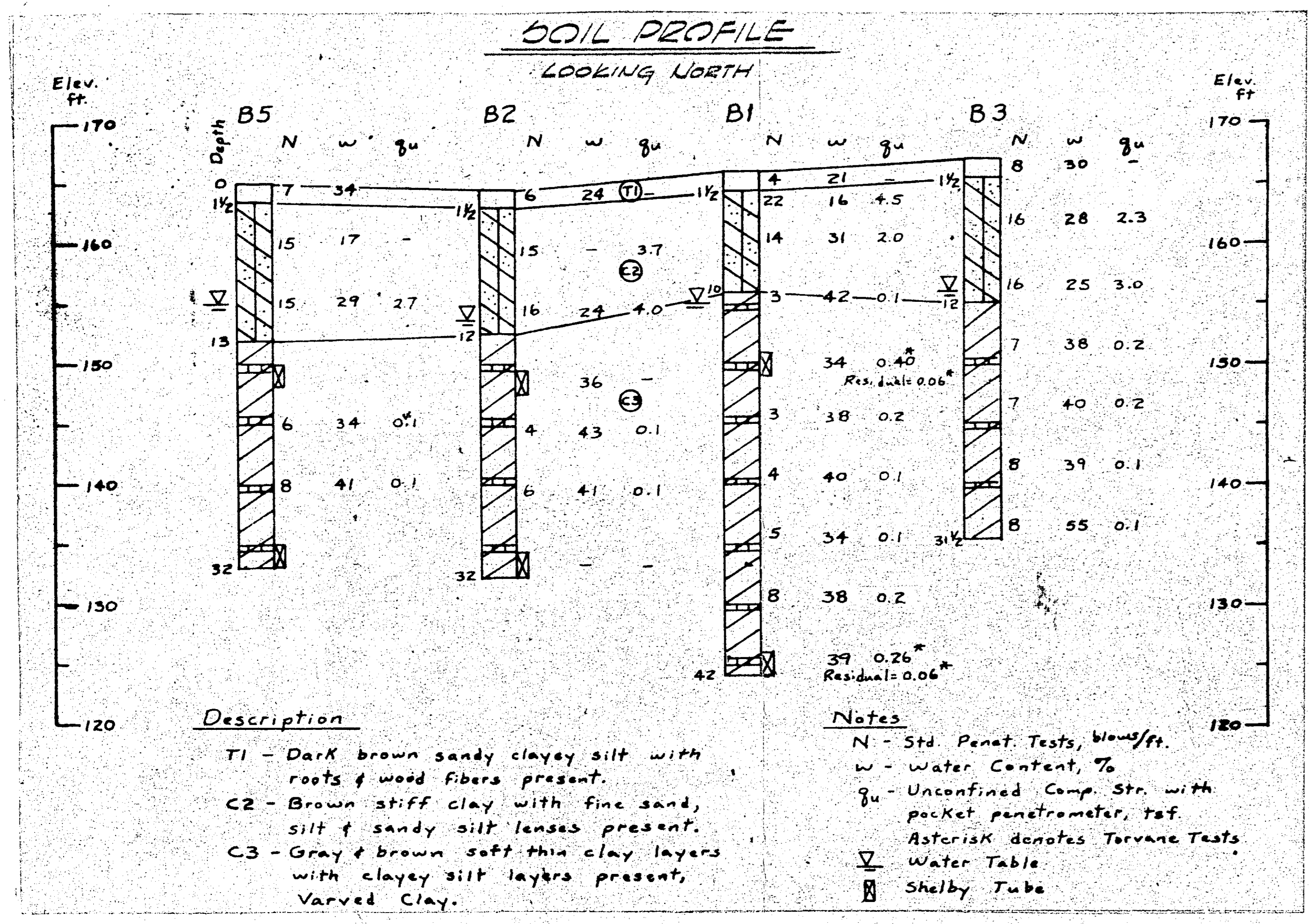
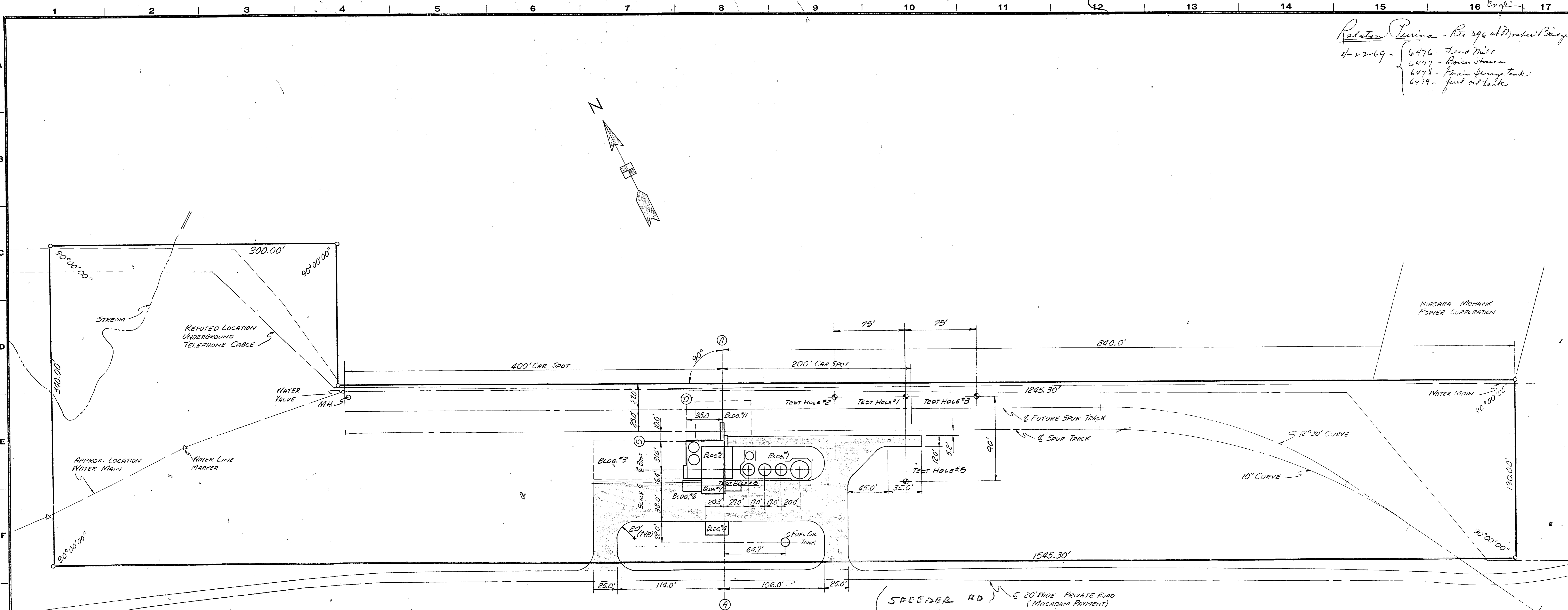
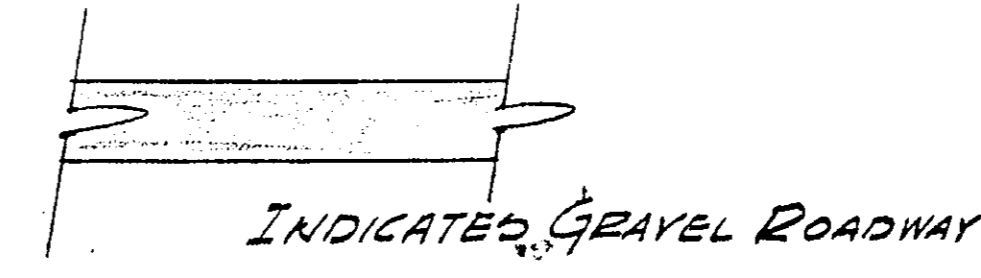


Ralston Purina - Res 396 at Morden Bridge
 4-22-69 - { 6476 - Feed Mill
 6477 - Boiler House
 6478 - Grain Storage tank
 6479 - Fuel oil tank



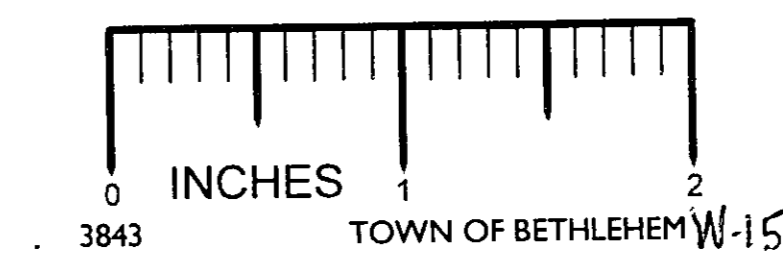
- #### BUILDING LEGEND
- BLDG #00 YARDS & GROUNDS
 - BLDG #1 GRAIN STORAGE
 - BLDG #2 MILL
 - BLDG #3 FUTURE WAREHOUSE
 - BLDG #4 BOILER HOUSE
 - BLDG #5
 - BLDG #6 TRUCK SCALE
 - BLDG #7 BULK TRUCK STATION
 - BLDG #8
 - BLDG #9
 - BLDG #10
 - BLDG #11 FUTURE TRAIN SHED

- #### BORING LEGEND
- BORING DEPTH
 - #1 42'0"
 - #2 32'0"
 - #3 31'6"
 - #4 32'0"



APPROVED
 DATED 4-16-69
 J.R. WICKER
 Town of Bethlehem

S



RALSTON PURINA COMPANY		ENGINEERING DEPT.	ST. LOUIS, MO.
SELKIRK, N.Y. PLANT		BLDG. 00	
CHOW MILL			
PLAN W-15			
PROPERTY PLOT			
DATE 1-15-69	TREND NO. 1	DRAWING NO. 484-P1-1	
MADE BY J.R. WICKER	TESTED BY J.R. WICKER	SCALE 1"=50'	
REVISION	BY	DATE	

NOTICE—THIS DRAWING AND ALL DESIGNS, DETAILS, INVENTIONS OR DEVELOPMENTS COVERED THEREBY ARE CONFIDENTIAL AND THE EXCLUSIVE PROPERTY OF RALSTON PURINA COMPANY WHICH RESERVES ALL PATENT OR OTHER RIGHTS. COPYING, REPRODUCTION OR DUPLICATION, IN WHOLE OR IN PART, IS FORBIDDEN UNLESS EXPRESSLY AUTHORIZED BY RALSTON PURINA COMPANY. ANY SUCH COPIES SHALL ALSO BE THE EXCLUSIVE PROPERTY OF THE RALSTON PURINA COMPANY. THIS DRAWING AND ANY SUCH COPIES SHALL BE RETURNED WHEN REQUESTED AND USED SUBJECT TO ABOVE CONDITIONS ONLY ON AUTHORIZED COMPANY WORK.