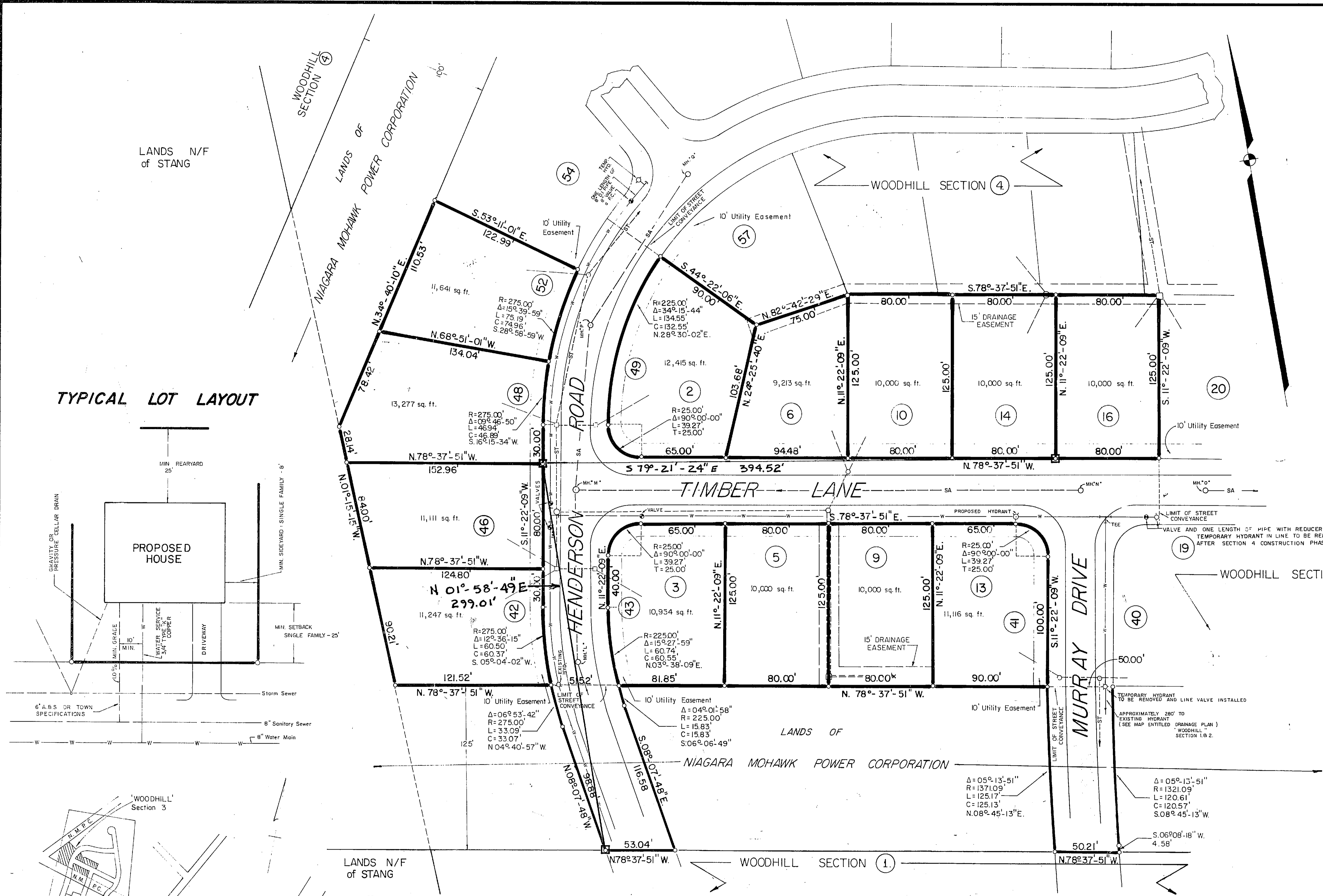


7/27/90		TEMP HYD. ADDED	REVISIONS	
NO.	DATE	DESCRIPTION		
1	4/17/89	STRUCTURES REVISED		
2	5/24/89	NOTES REVISED		
3	8/8/89	RELOCATED 8" WATER VALVE FROM THE CORNER OF TIMBER LANE & MURRAY DRIVE TO TIMBER & PATTERSON		
4	12/19/89	STORM SEWER STRUCTURES REVISED		
5	1/30/90	WATER LINE REVISED		
6	2/26/90	HYD. and VALVE RELOCATED		
7	3/28/90	DIMENSIONS REVISED		

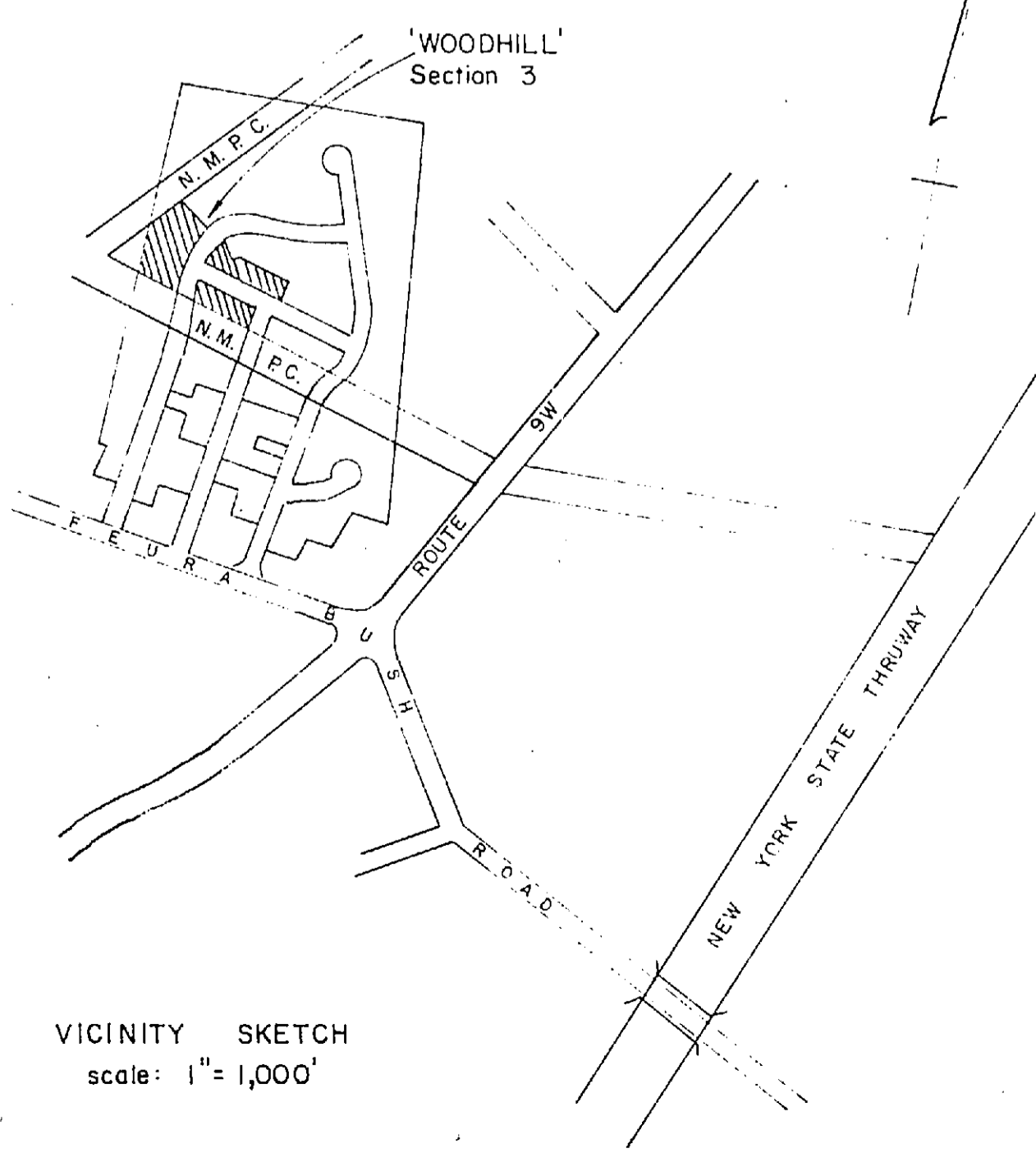
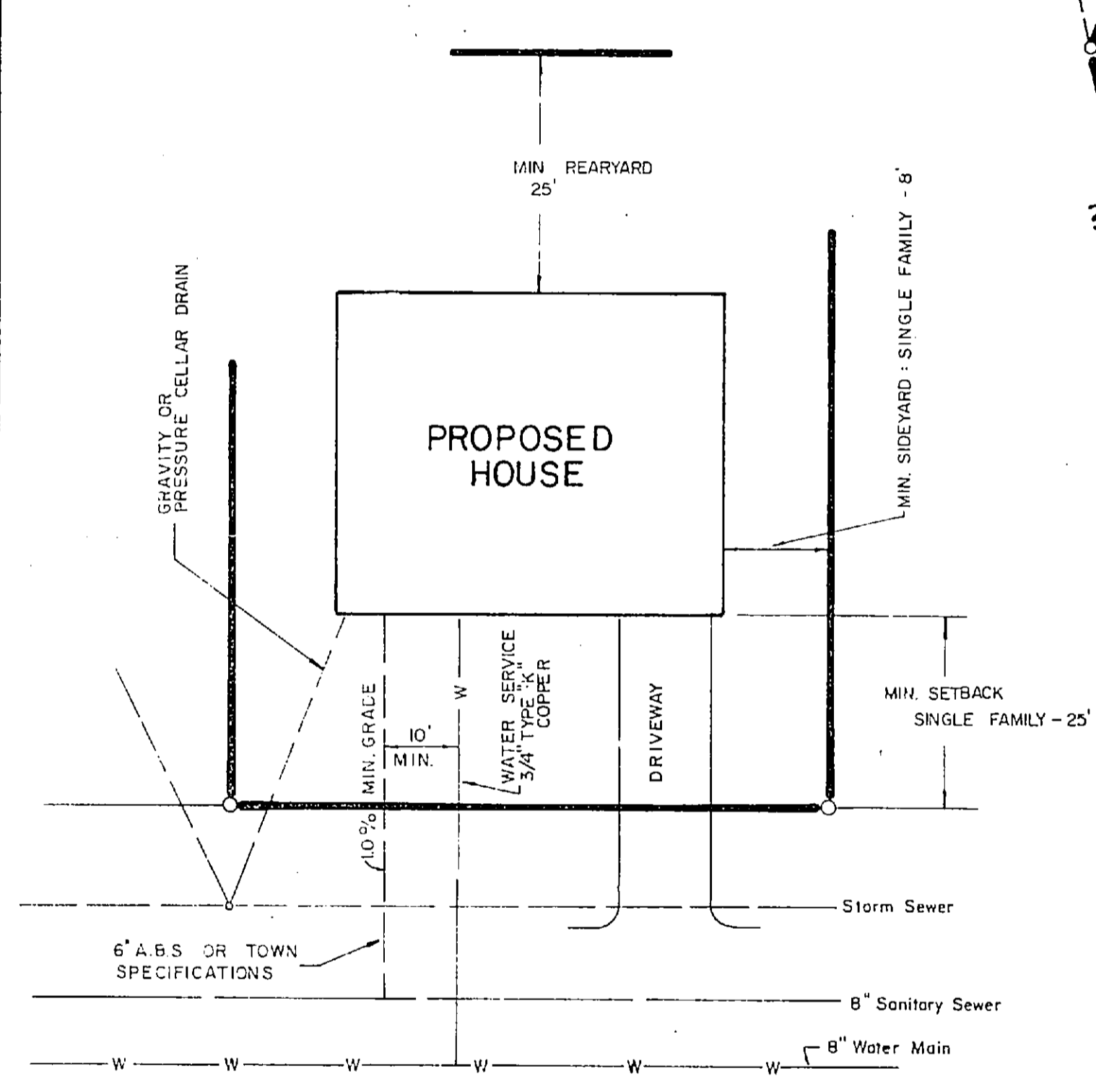
8/30/94 MONUMENT LOCATIONS SHOWN

NOTES

1. LOT NUMBERS TO BE USED AS HOUSE OR STREET NUMBERS. FOR CORNER LOT, USE NUMBER ON STREET WHICH HOUSE FACES
 2. ALL EASEMENTS SHOWN TO BE GRANTED TO TOWN OF BETHLEHEM
 3. ALL LOTS SHOWN SUBJECT TO THE RESERVATION OF AN EASEMENT TEN FEET IN WIDTH ADJACENT TO ALL STREET LINES FOR ELECTRIC AND COMMUNICATIONS SERVICE.
 4. SANITARY SEWER TO BE ABS TRUSS PIPE OR PVC/SDR-26 PIPE AT S=0.004 UNLESS OTHERWISE NOTED.
 5. ALL WATER MAINS SHALL BE 8" DUCTILE IRON, SEE TOWN OF BETHLEHEM DETAIL SHEET NO. 2
 6. A MINIMUM OF 18" VERTICAL SEPARATION BETWEEN INVERT OF WATER LINE AND CROWN OF SANITARY SEWER LINE TO BE MAINTAINED AT ALL CROSSINGS. HORIZONTAL SEPARATION - 10' MIN.
 7. AT STORM SEWER CROSSINGS BY WATER MAIN, 18" MINIMUM CLEARANCE SHALL BE MAINTAINED, WHETHER UNDER OR OVER.
 8. WATER MAIN JOINTS TO BE LOCATED EQUAL DISTANCE FROM SANITARY OR STORM SEWER CROSSINGS.
 9. SEE DRAINAGE PLAN, STREET AND EASEMENT PROFILES, GENERAL NOTES AND TOWN OF BETHLEHEM - STORM DRAINAGE AND HIGHWAY DETAILS, WATER DISTRIBUTION DETAILS, AND SANITARY SEWER DETAILS FOR COMPLETE DESIGN.
 10. IN THE EVENT THAT GAS IS EXTEND TO THE SITE, FINAL DESIGN WILL BE COMPLETED BY NIAGARA MOHAWK POWER CORPORATION, WITH THE APPROVAL OF THE TOWN OF BETHLEHEM DEPARTMENT OF PUBLIC WORKS
11. MONUMENT SET - □



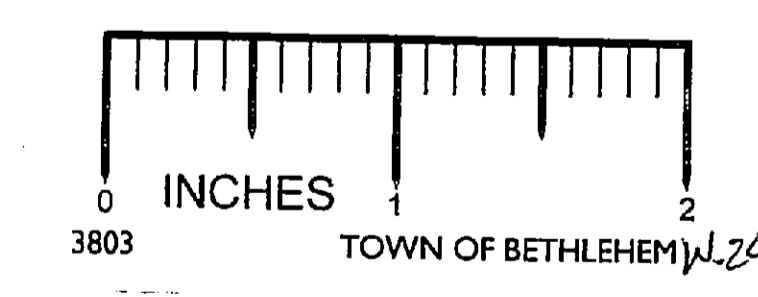
TYPICAL LOT LAYOUT



LEGEND	
□	DENOTES CATCH BASIN
○	MANHOLE
○	HYDRANT
●	GATE VALVE
T	TEE
-W-	WATER MAIN
-G-	GAS MAIN
-ST-	STORM SEWER
-SA-	SANITARY SEWER

ALBANY COUNTY HEALTH DEPARTMENT APPROVAL

PLANNING BOARD APPROVAL



MONUMENTATION

LOT LAYOUT OF
WOODHILL SECTION 3
 Property of
VINCENT RIEMMA

TOWN: BETHLEHEM	COUNTY: ALBANY
STATE: NEW YORK	DATE: SEPT. 15, 1987
SCALE: 1" = 50'	REVISION NO: 8

Map Prepared by
EDWARD W. BOUTELLE & SON
 CIVIL ENGINEERS & SURVEYORS
 Delmar, New York

SHEET FILE OF NO: