

NOTES

ALL CONSTRUCTION DISTURBANCES ON STATE OR PRIVATE LAND TO BE RESTORED BY CONTRACTOR

NOTE: SEWER LINES ARE TO BE INSTALLED UNDER THE SUPERVISION OF A NEW YORK STATE LICENSED PROFESSIONAL ENGINEER. ENGINEER SHALL SUBMIT A CERTIFICATE STATING THAT THE CONSTRUCTED FACILITIES HAVE BEEN CONSTRUCTED IN ACCORDANCE WITH THE APPROVED PLANS. CERTIFICATION MUST BE RECEIVED BY THE ALBANY COUNTY HEALTH DEPARTMENT WITHIN SIXTY (60) DAYS FROM THE COMPLETION OF CONSTRUCTION.

NOTE: WATER QUALITY-TYPE PIPE MATERIAL MUST BE UTILIZED FOR SANITARY AND STORM SEWERS IN AREAS WHERE A TEN FOOT HORIZONTAL SEPARATION DISTANCE FROM WATER MAINS CANNOT BE MAINTAINED.

NOTE: ALL WATER MAINS ARE TO BE INSTALLED, DISINFECTED, AND TESTED IN ACCORDANCE WITH AWWA STANDARD C601 OR OTHER METHOD ACCEPTABLE TO THE ALBANY COUNTY HEALTH DEPARTMENT.

UNAUTHORIZED ALTERATIONS OR ADDITIONS TO THIS DOCUMENT IS A VIOLATION OF SECTION 7209 SUBDIVISION 2 OF THE NEW YORK STATE EDUCATION LAW

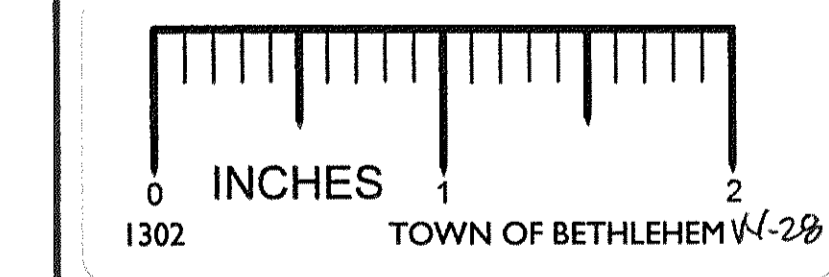
REVISIONS			
DATE	BY	DESCRIPTION	SYMBOL
4/87	JB	NEW ROAD PROFILE, REROUTE SANITARY. ADD CB 22 & 22A. ADJUST ALL ELEVATIONS.	△
11/87	JB	REVISED PER TOWN OF BETHLEHEM.	△
1/88	JB	FINAL REVISIONS	⊙

J. KENNETH FRASER
AND ASSOCIATES, P.C.
CONSULTING ENGINEERS
RENSSELAER, NEW YORK

R & R
ASSOCIATES

THE MEADOWS
SUBDIVISION

TOWN OF BETHLEHEM
NEW YORK



SCALE: AS NOTED

PROJ. ENG'R: JFB
DRAWN BY: HLW
ASSEMBLED BY: EJS
CHECKED BY: JKF

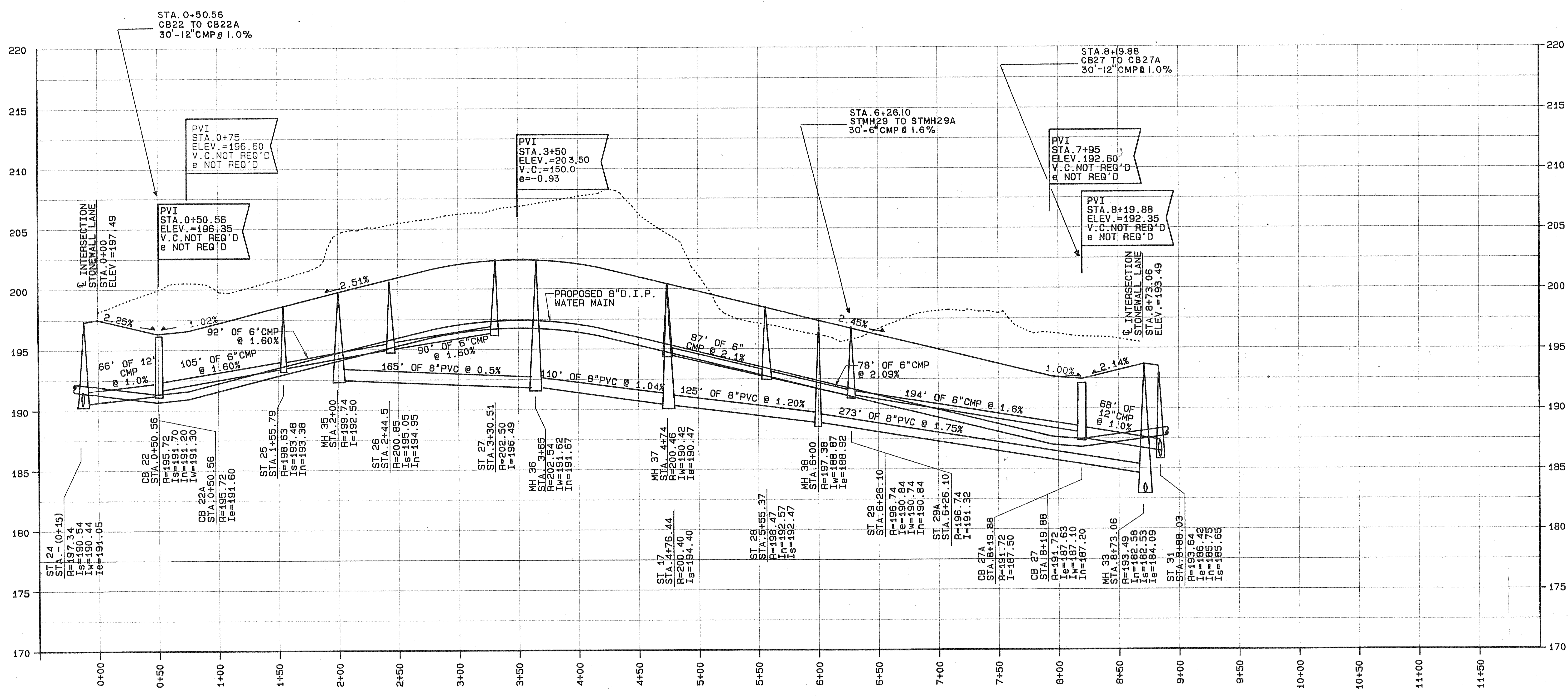
REF. NO. 238645.011

SHEET TITLE: PROFILE - PASTURE GATE LANE

DATE: JANUARY 1987 SHEET 11 OF 26

ALBANY COUNTY DEPARTMENT OF HEALTH
DIVISION OF ENVIRONMENTAL HEALTH SERVICES.

By direction of the Commissioner of Health, these plans are hereby approved. See first sheet for date and signature.



PROFILE OF PASTURE GATE LANE

SCALE: HORIZ. 1"=50'-0"
VERT. 1"=5'-0"