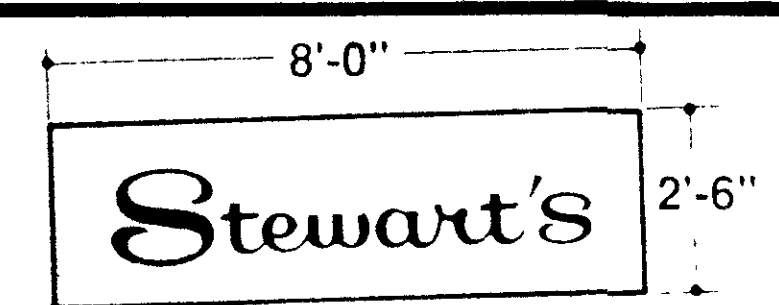
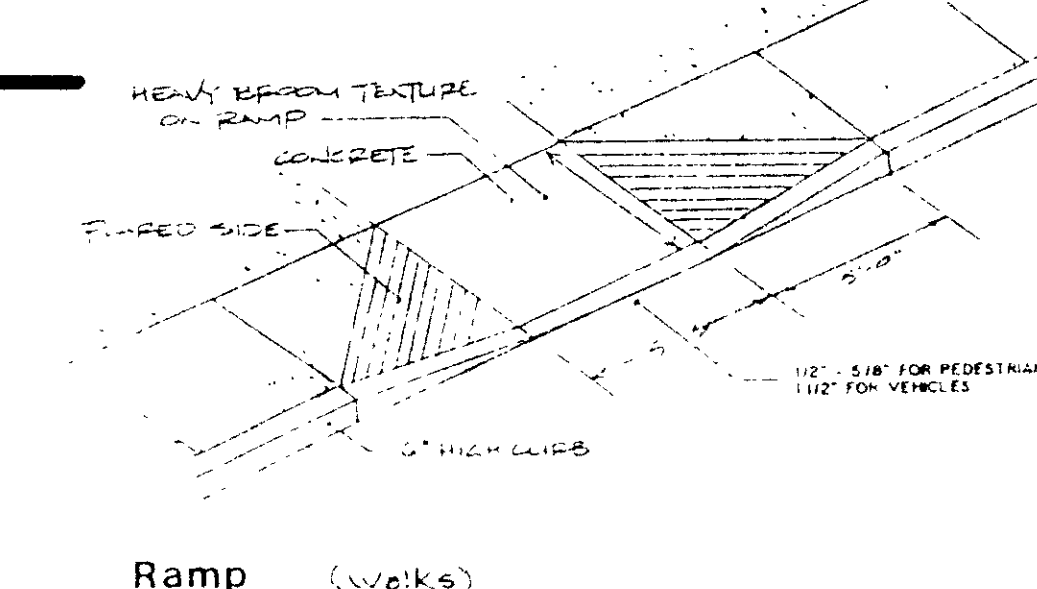


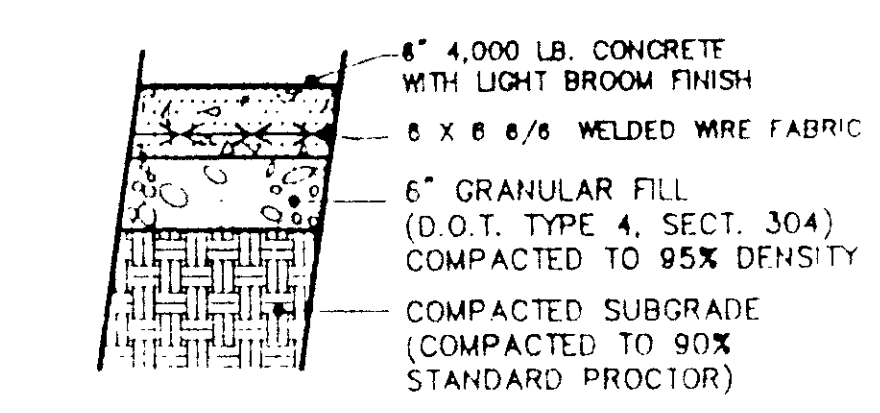
TYPICAL STEWART'S SHOPS SIGN DETAIL
 BACKGROUND: 1/4" PINKED WIRE
 LETTERS: WHITE PLASTIC 1/4" THICK
 TOTAL SIGN: 18"



TYPICAL CANOPY SIGN DETAIL
 BACKGROUND: WHITE
 LETTERS: WHITE
 TOTAL SIGN: 36"
 WEIGHT: 100#
 MOUNTED WITH THROUGH BOLTS ON CANOPY FRAME



Ramp (overlaid)

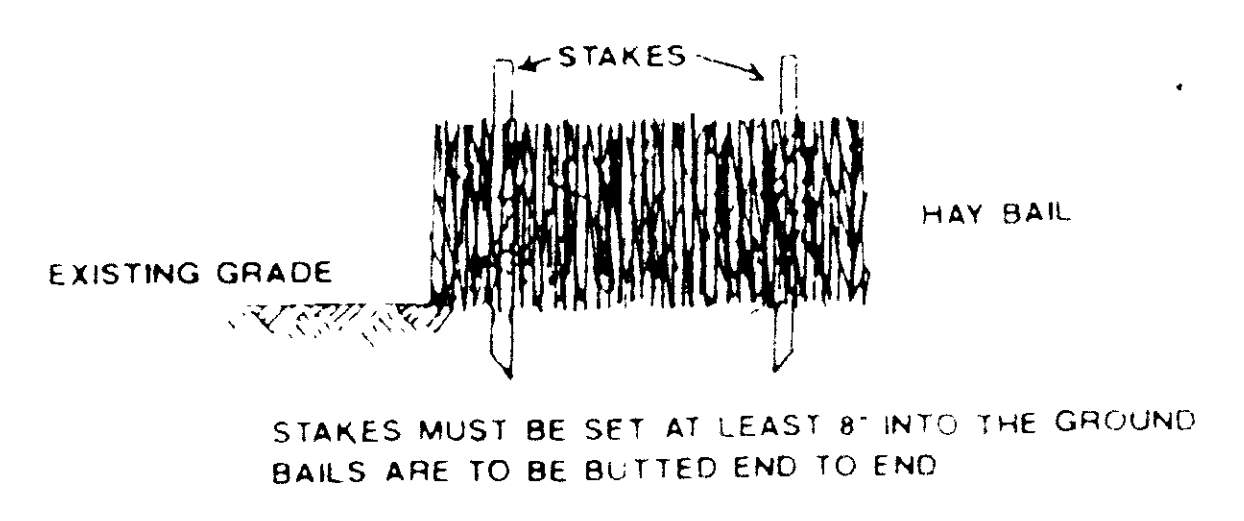


CONCRETE WALK DETAIL

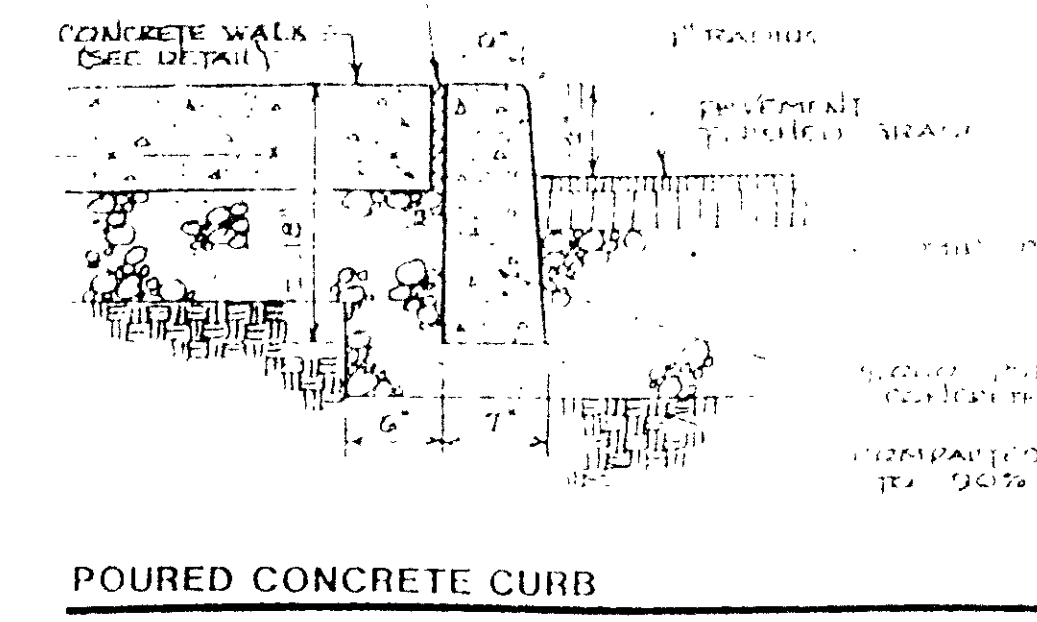
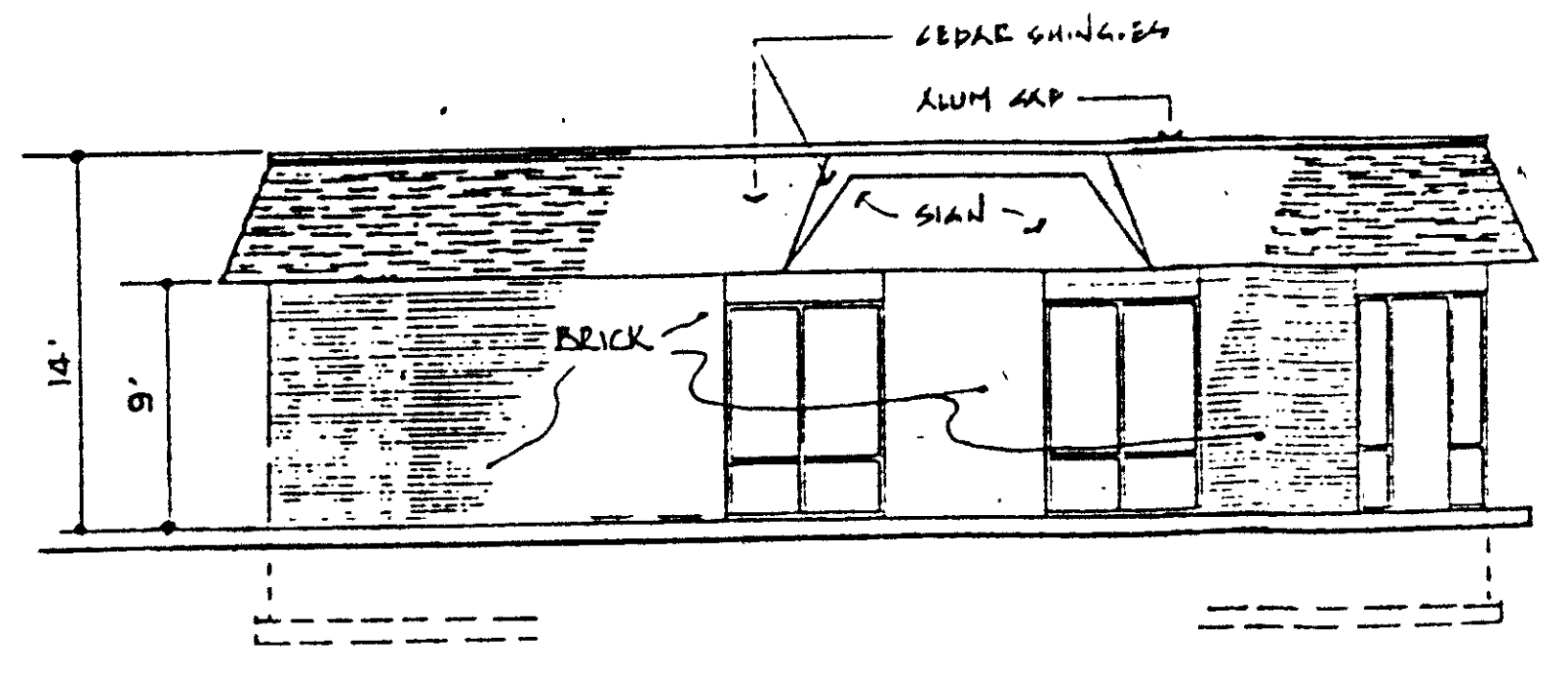
Asphalt Pavement

ITEM	QUANTITY	UNIT	DESCRIPTION	PRICE	TOTAL
1	13	sq. yd.	ASPHALT PAVEMENT	6.14	80.82
2	40	sq. yd.	CONCRETE WALK	1.50	60.00
3	7	sq. yd.	CONCRETE RAMP	1.50	10.50
4	12	sq. yd.	ASPHALT PAVEMENT	6.14	73.68
			TOTAL		225.00

EROSION CONTROL DETAIL

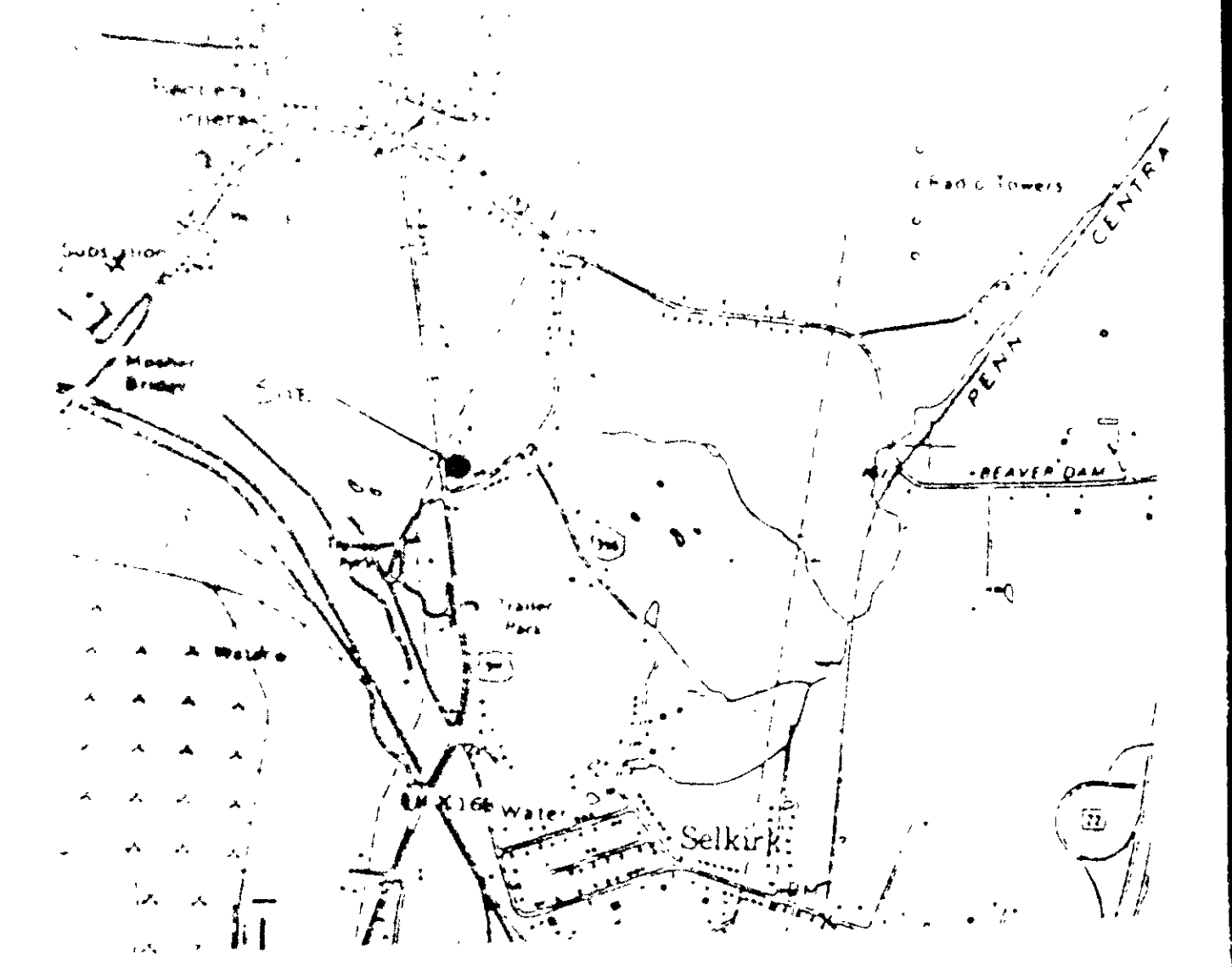
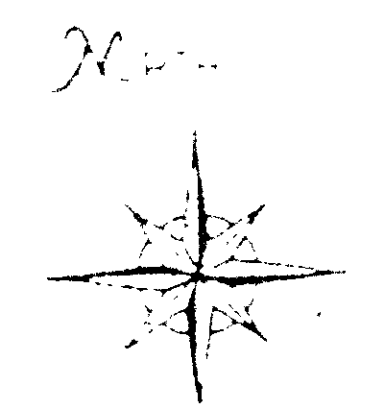
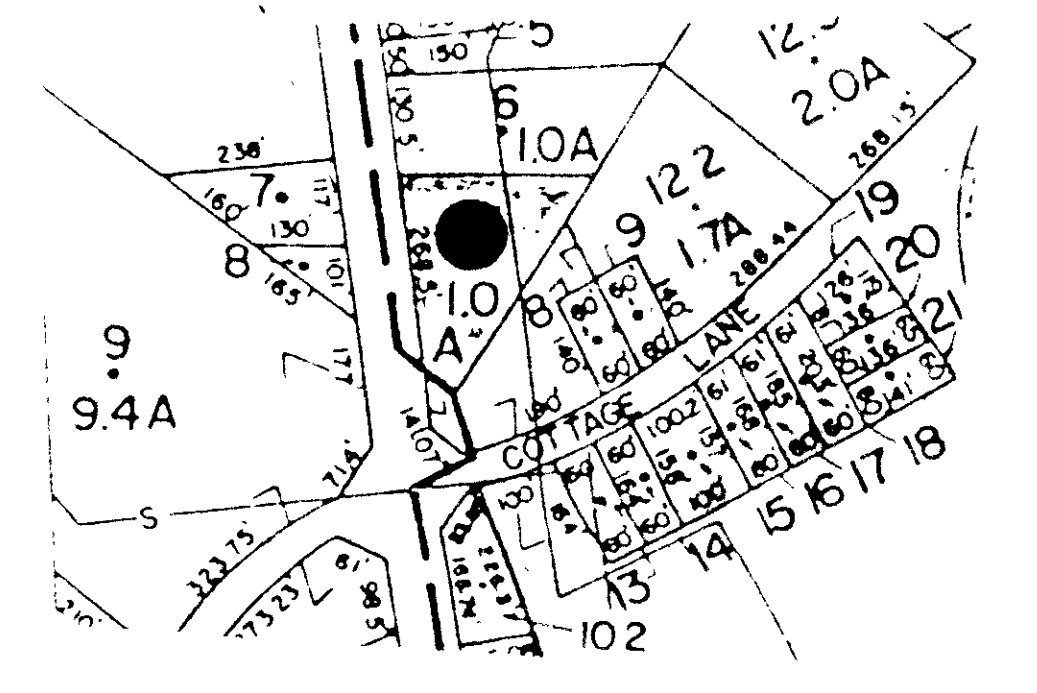


STAKES MUST BE SET AT LEAST 8" INTO THE GROUND
 BALS ARE TO BE BUTTED END TO END

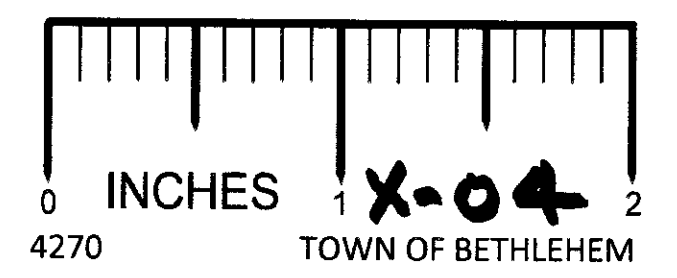
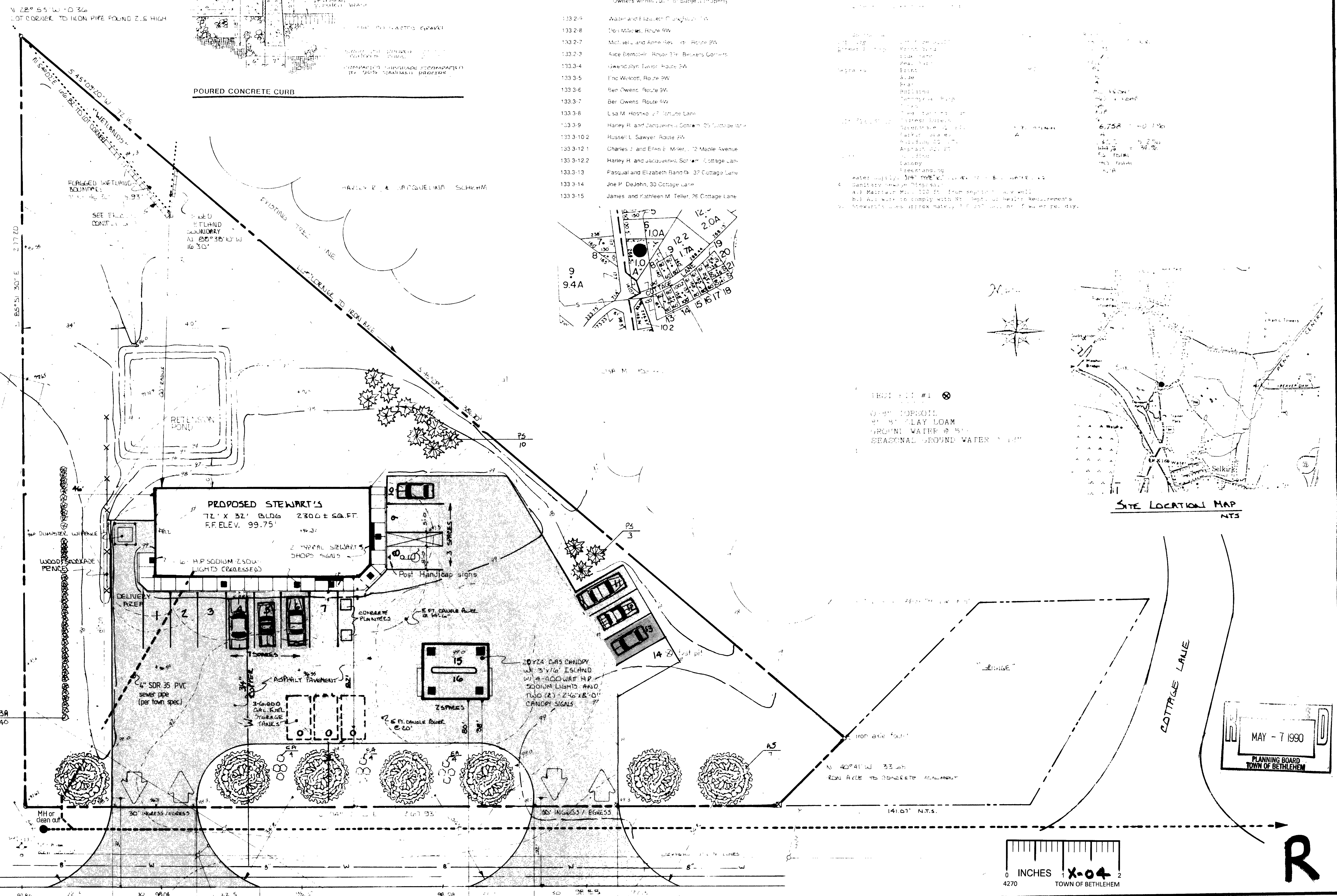
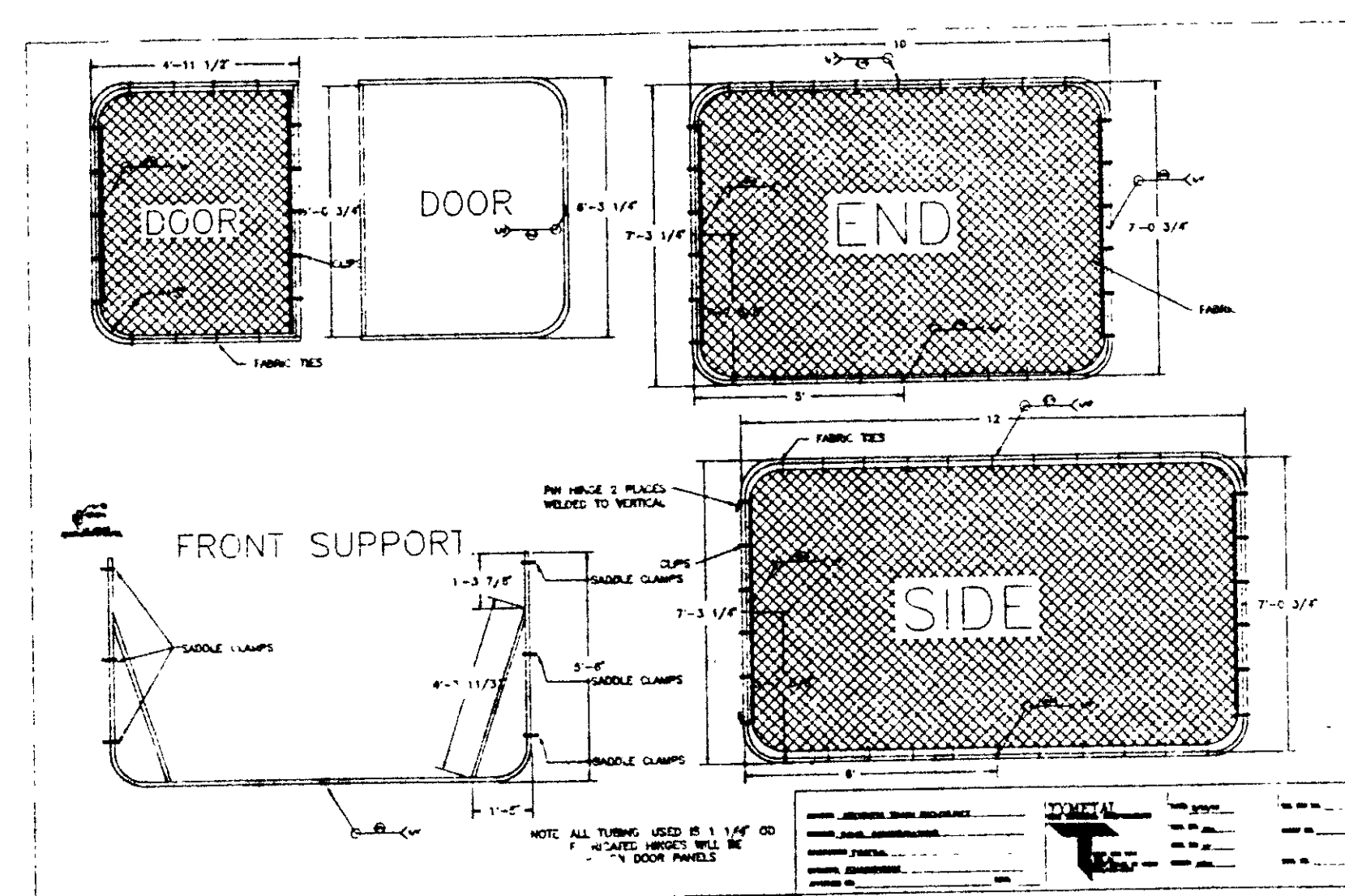


POURED CONCRETE CURB

- Owners within 200' of Subject Property:
- 133-2-9 Water and Elizabeth Cottages, LLC
 - 133-2-8 Tom Adams, Route 9W
 - 133-2-7 Matt, Lisa and Anne Lee, Rt. 9W
 - 133-2-3 Ace Berwick, Route 11, Berwick Corners
 - 133-3-4 Grand View, Route 9W
 - 133-3-5 Eric Wilson, Route 9W
 - 133-3-6 Ben Owens, Route 9W
 - 133-3-7 Ben Owens, Route 9W
 - 133-3-8 Lisa M. Heston, Cottage Lane
 - 133-3-9 Harry R. and Jacquelyn J. Schmitt, Cottage Lane
 - 133-3-10 Russell L. Sawyer, Route 9W
 - 133-3-12 Charles J. and Ellen S. Miller, 12 Maple Avenue
 - 133-3-12-2 Harry R. and Jacquelyn J. Schmitt, Cottage Lane
 - 133-3-13 Pasqual and Elizabeth Bandini, 37 Cottage Lane
 - 133-3-14 Jne P. Dajohn, 30 Cottage Lane
 - 133-3-15 James and Kathleen M. Taylor, 26 Cottage Lane



SITE LOCATION MAP
NTS



MAY - 7 1990
 PLANNING BOARD
 TOWN OF BETHELEM

	STEWART'S SITE PLAN LOCATED AT RT. 9W & COTTAGE LANE, SELKIRK N.Y.		JOB No.: 89 - 10 - 17
	RICHARD H. GREEN P.E., P.C. CONSULTING ENGINEERS MAIN SQUARE 318 DELAWARE AVE. DELMAR, N.Y., 12054 (518) 438-8474 P.E. # 063776		BY: JOURN DWG. No.: 1
DATE: 11-2-89	SCALE: NOTED	Revisions 1. 11-2-89: AS SHOWN 2. 11-2-89: AS SHOWN 3. 11-2-89: AS SHOWN 4. 11-2-89: AS SHOWN 5. 11-2-89: AS SHOWN	Rte. 9W & Cottage Lane Selkirk, NY SELC # 240 DRAWN BY: GEORGE MEDICK SCALE: 1" = 20' DATE: APPROVED 1/6/89 D & B DESIGN



P. O. Box 435, Saratoga Springs, NY 12866

LEAD FR. AAC 2 May 90