

NOTE: MAY 8, 1980 - PIPE LINE RAISED TO GO OVER

SEWER LATERAL - REMAINDER OF LINE FROM

STA 3+63 TO 4+71 INSTALLED AT SLOPE OF .0021

ELEV @ 3+63 - 201.16

ELEV @ 4+71 - 201.40

BUILD NEW MH - CONNECT EXISTING 12" C.I. & 6" V.T. PIPES TO STRUCTURE - SEAL OUTLET PIPE TO EAST  
PIPE LINE FROM BEHIND 197 DELAWARE (BUTLER & BROWN)  
T/EXIST RIM 207.46

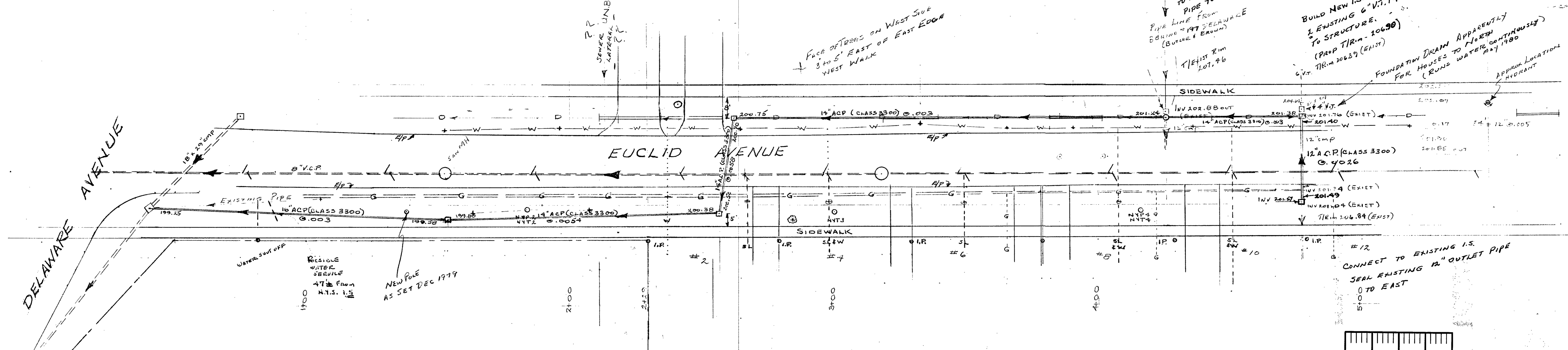
BUILD NEW I.S. - CONNECT EXISTING 6" V.T. PIPES TO STRUCTURE.  
(PROP T/RIM - 106.90)  
T/RIM 206.39 (EXIST)

FOUNDATION DRAIN APPARENTLY FOR HOUSES TO NORTH (RUNS WATER CONTINUOUSLY) MAY 1980  
APPROX LOCATION HYDRANT

FACE OF TREES ON WEST SIDE 3 TO 5' EAST OF EAST EDGE WEST WALK

DELAWARE AVENUE

EUCLID AVENUE



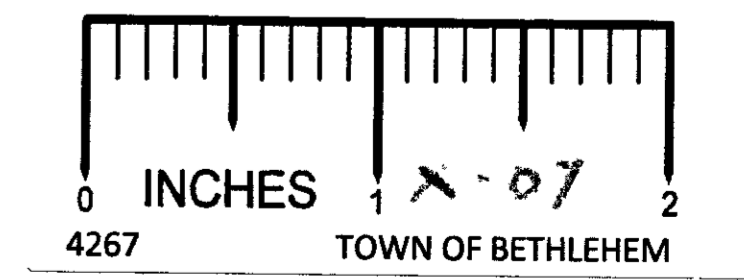
EUCLID AVENUE STORM DRAINAGE SYSTEM

INSTALLED BY TOWN OF BETHLEHEM HIGHWAY DEPARTMENT

APRIL & MAY 1980

SCALE 1" = 20'

SCALE 1" = 20'



1" = 20'