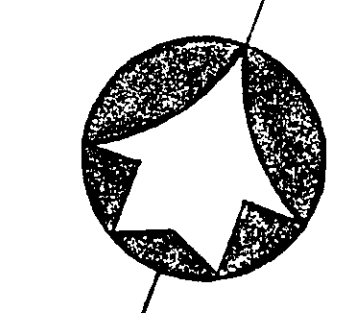
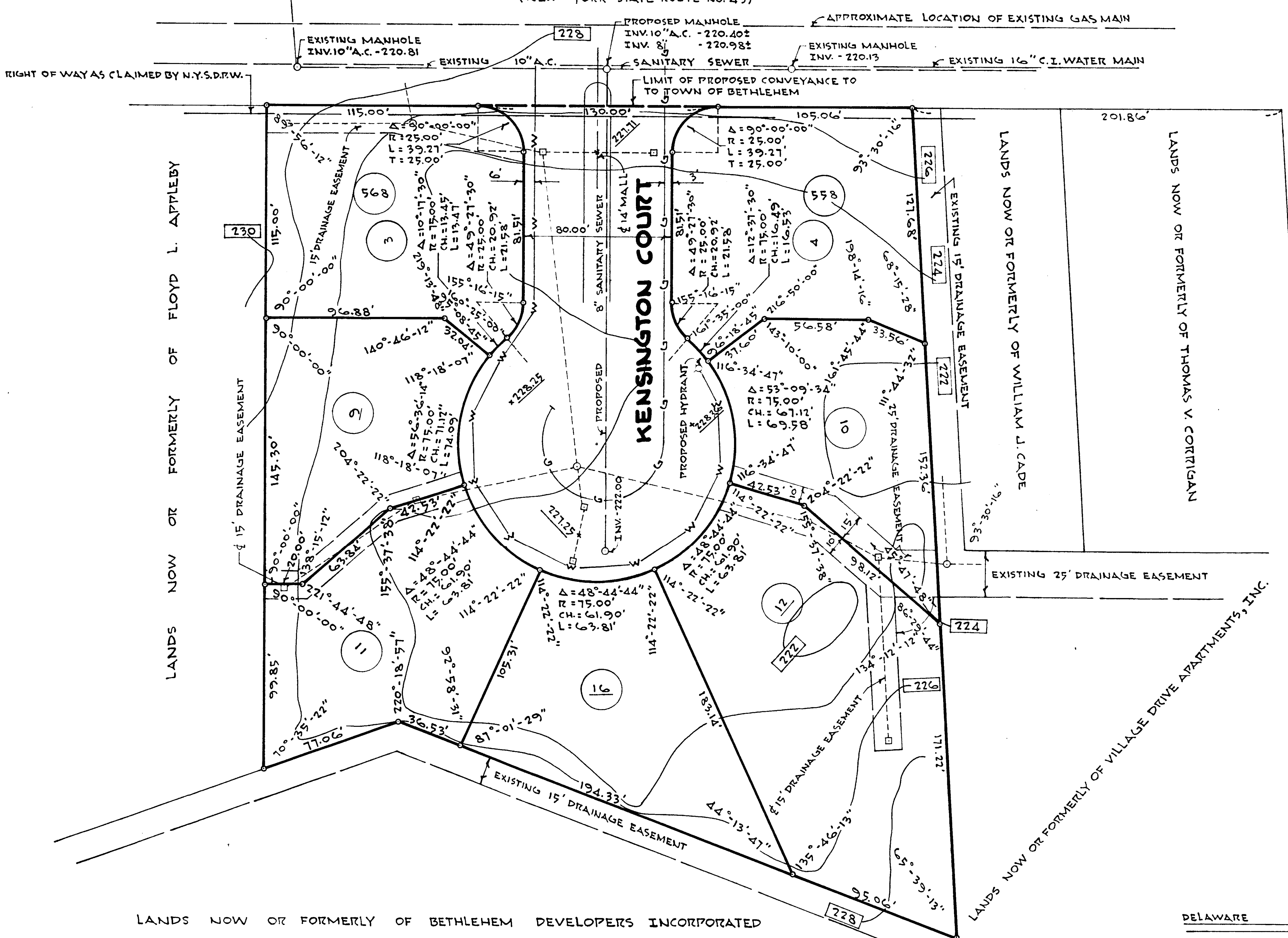


DELAWARE AVENUE

(NEW YORK STATE ROUTE NO. 43)

REVISIONS

NO.	DATE	DESCRIPTION



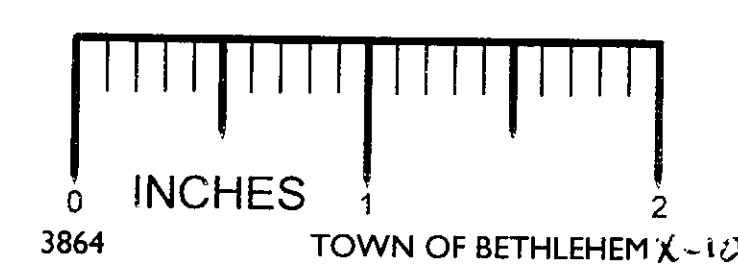
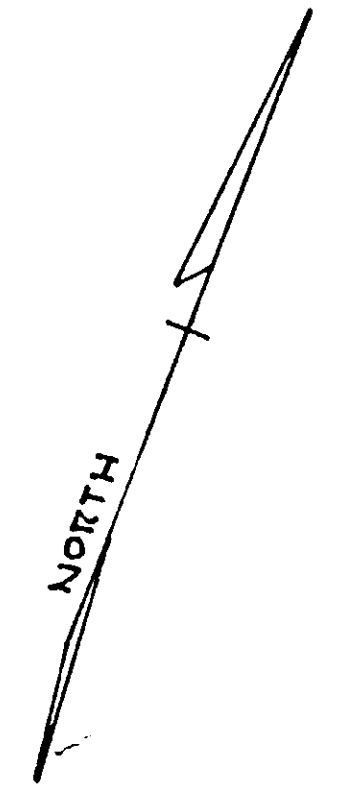
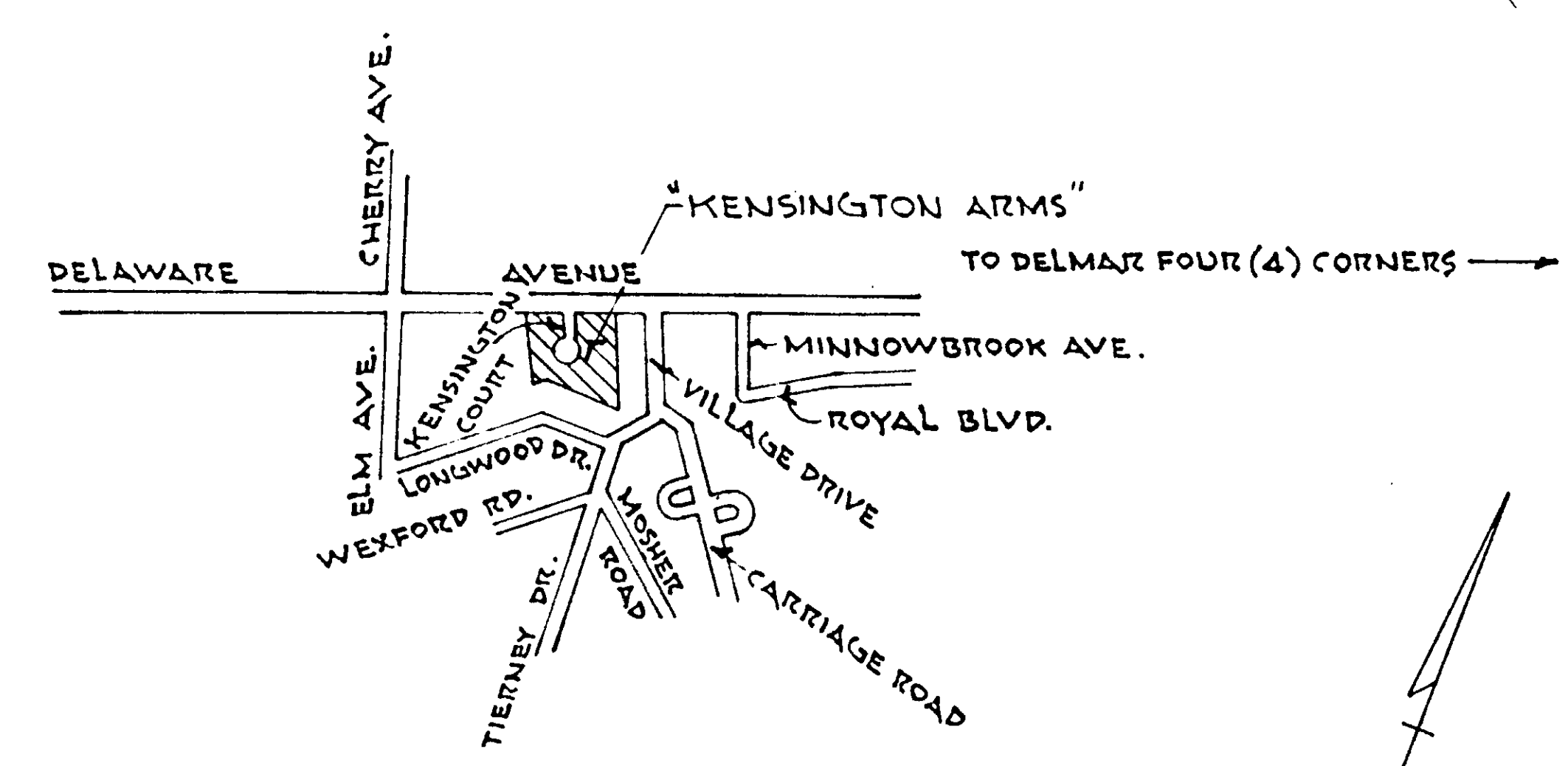
GENERAL NOTES

- EASEMENTS SHOWN TO BE GRANTED TO THE TOWN OF BETHLEHEM.
- WATER MAIN MATERIAL, SIZE AND LOCATION DETERMINED BY TOWN OF BETHLEHEM WATER DISTRICT NO. 1.
- SANITARY SEWER SHOWN AS PREPARED BY J. KENNETH FRASER ASSOCIATES.
- CONTOUR INTERVAL TWO (2') FEET.
- BENCH MARK - N.P.O.A. ON HYDRANT NORTH SIDE OF DELAWARE AVENUE NORTHEAST OF VILLAGE DRIVE EL. 228.90 U.S.G.S. DATUM.
- PROPOSED GAS MAIN SHOWN THUS: — G — G — G — G — G — G
- PROPOSED 6" CAST IRON WATER MAIN SHOWN THUS: — W — W — W — W — W — W
- PROPOSED FINISHED GRADES SHOWN THUS: 228.25
- LOTS SHOWN TO BE FILLED A MIN. OF 6" ABOVE FINISHED STREET ELEVATION AT BUILDING LINE.

PLANNING BOARD
TOWN OF BETHLEHEM
ALBANY COUNTY, NEW YORK

This plat APPROVED subject to such conditions as are stated in Planning Board Certificate of Approval No. 88, dated July 11, 1967

Howard P. Rabbo
Title Chairman
Date Aug 17, 1967



LANDS NOW OR FORMERLY OF BETHLEHEM DEVELOPERS INCORPORATED

PLAN 1" = 40'

PLANNING BOARD APPROVAL

COUNTY HEALTH DEPARTMENT APPROVAL

ALBANY COUNTY DEPARTMENT OF HEALTH

This is to certify that the proposed arrangements for water supply and sewerage for Kensington Arms for ready development in the Town of Bethlehem are approved subject to the conditions listed in letter of this date, and in accordance with Article X of the Albany County Sanitary Code. Consent is hereby given for the filing of this map in the files of the Albany County Clerk.

Date AUG 18, 1967
Thomas J. ...
Commissioner of Health
Div. Environmental Health Services

Lindsay M. Boutelle
LINDSAY M. BOUTELLE

MAP OF "KENSINGTON ARMS" PROPERTY OF WOODROW J. BEAUREGARD

TOWN: BETHLEHEM COUNTY: ALBANY
STATE: NEW YORK DATE: MAY 31, 1967
SCALE: AS SHOWN REVISION NO:

Map Prepared by EDWARD W. BOUTELLE & SON Civil Engineers & Surveyors Delmar, New York

SHEET FILE NO: 1-2T-K11-52-24-20