

VEHICLE CAPACITY		
TYPE	FULL SERVE	SELF SERVE
FUELING	--	10
WAITING TO BE FUELED	--	5
TOTALS	--	15
TOTAL NUMBER OF DISPENSING UNITS: 5		
TOTAL NUMBER OF FUELING POSITIONS: 10		

CCTV CAMERAS			
LANE #	FULL/SERVE	SELF SERVE	FULL SERVE
LANE 1/2	--	1	--
LANE 3/4	--	1	--
LANE 5/6	--	1	--
LANE 7/8	--	1	--
LANE 9/10	--	1	--

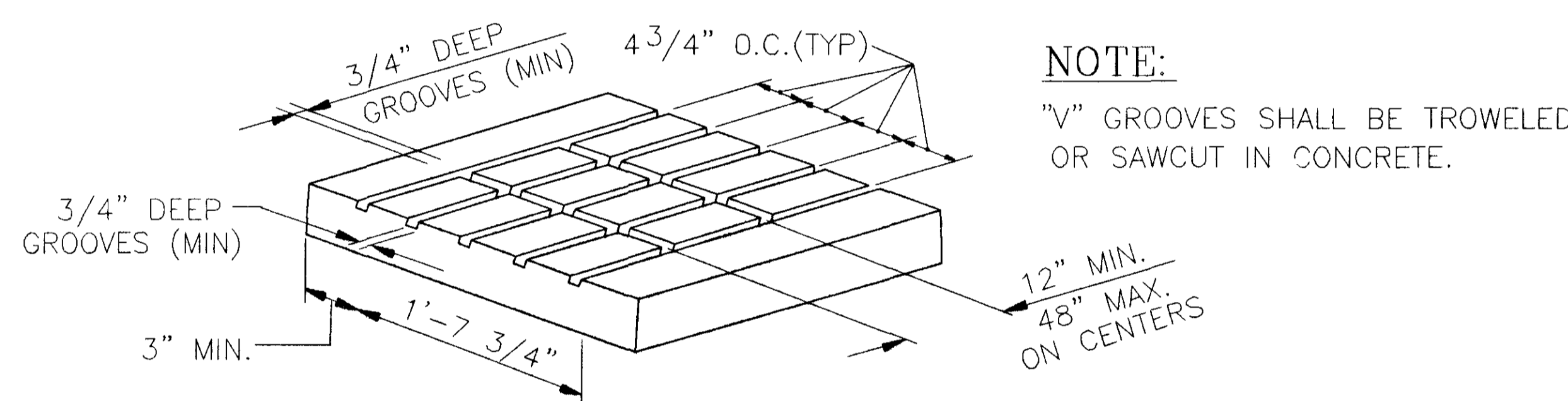
U/G STORAGE TANKS				
TANK	CAPACITY	PRODUCT	TYPE	DATE INSTALLED
A	10,000 GAL.	PREM. GASOLINE	DW FIBERGLASS	NEW-TBD
B	8,000 GAL.	REG. GASOLINE	DW FIBERGLASS	NEW-TBD
C	15,000 GAL.	REG. GASOLINE	DW FIBERGLASS	NEW-TBD

SITE SPECIFIC SYSTEM COMPONENT TABLE *				
NUMBER OF SYSTEMS REQ'D	NUMBER OF NOZZLES REQ'D	NUMBER OF CYL. REQ'D	CYLINDER SIZE & QTY.	
8' LONG SYSTEM	(24) PER SYSTEM	(4) PER SYSTEM	ATD-35BC= 0	ATD-80BC= 4
(5) SYSTEMS TOTAL	(120) TOTAL	(20) TOTAL	ATD-35BC= 0	ATD-80BC=20

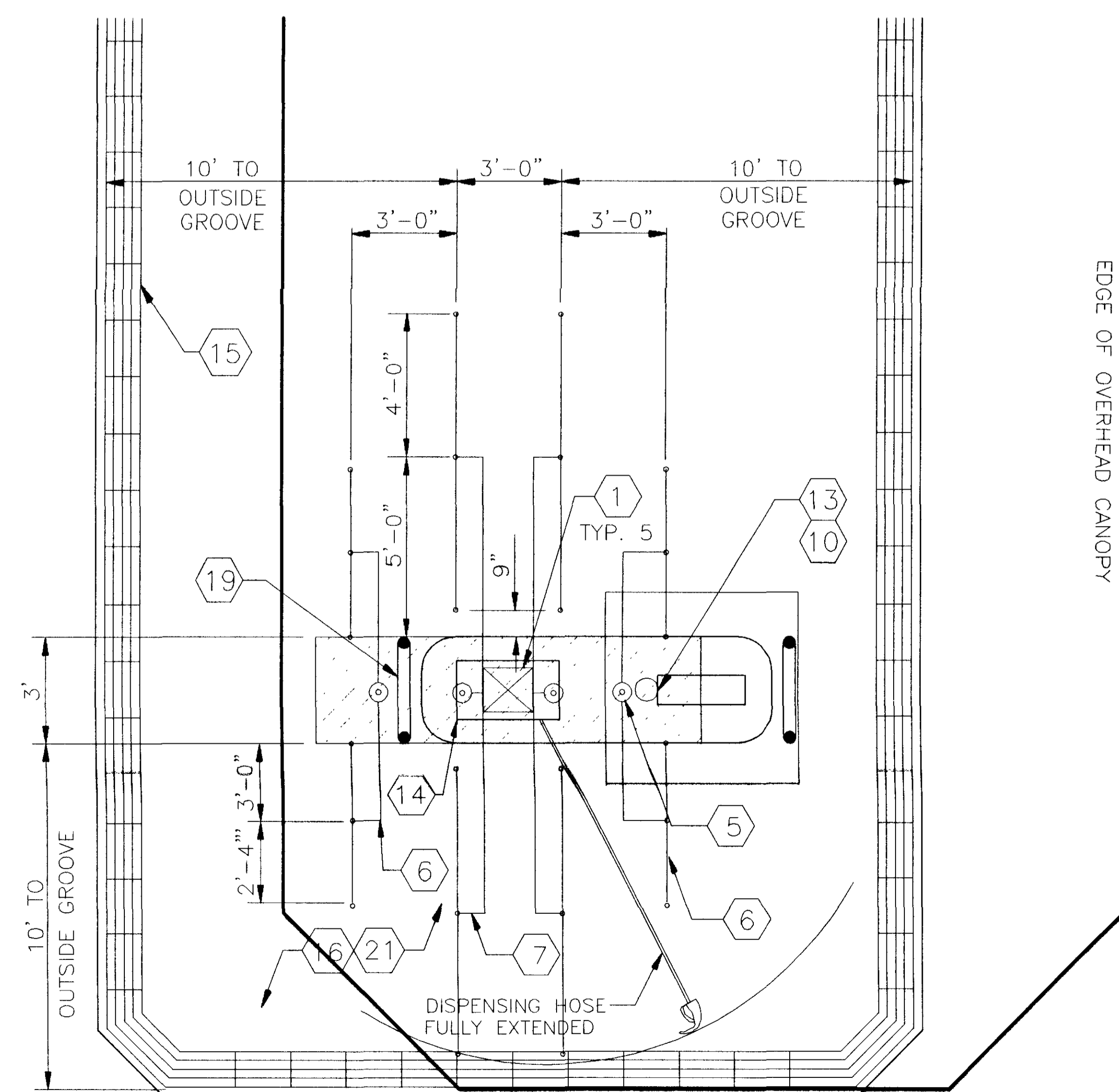
\* INCLUDES MAIN AND END OF ISLAND PROTECTION.

NEW YORK STATE HIGHWAY ROUTE 9W

SITE PLAN  
SCALE: 1" = 30'



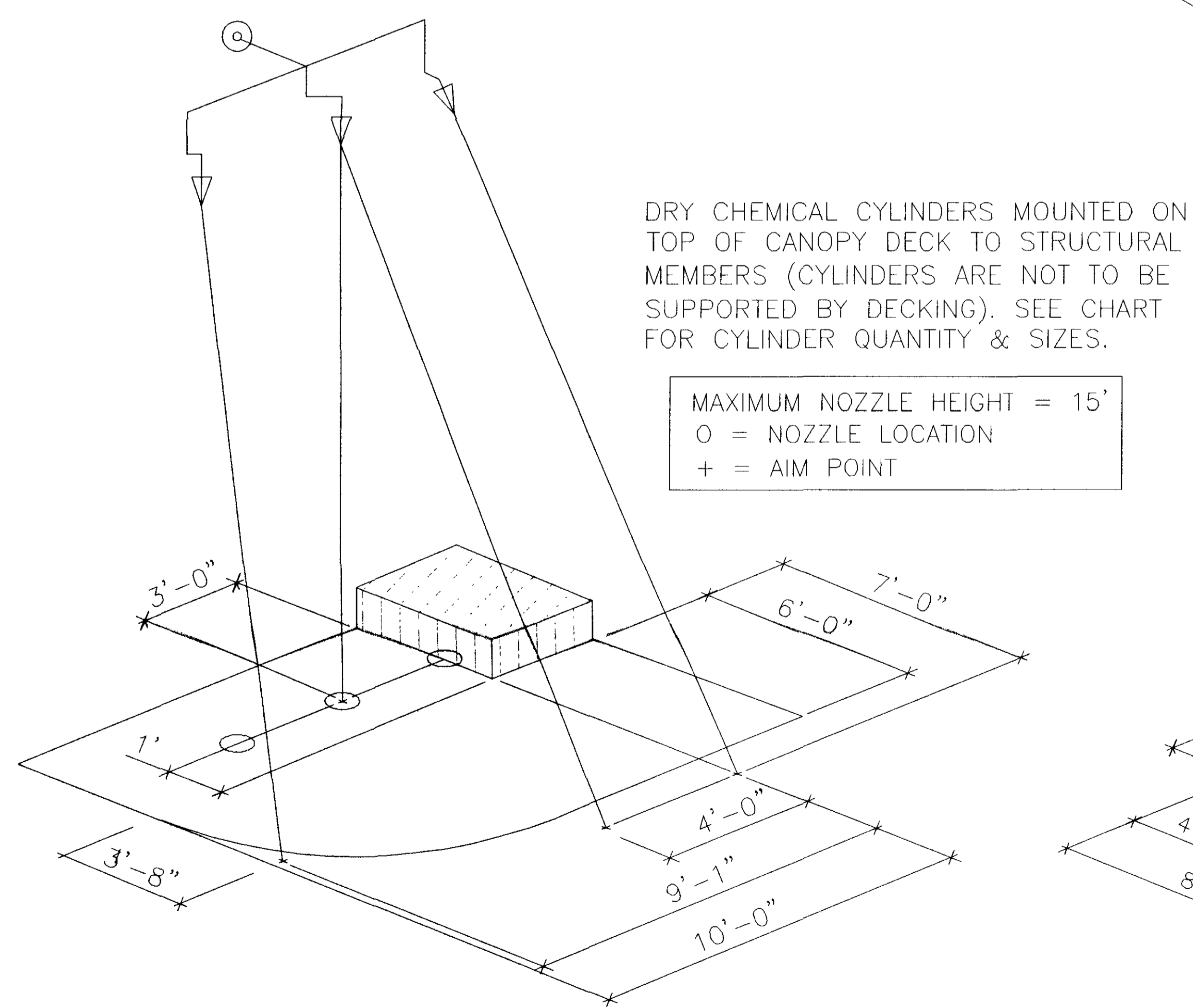
15 POSITIVE LIMITING BARRIER SAW CUTS & PATTERNS  
NOT TO SCALE



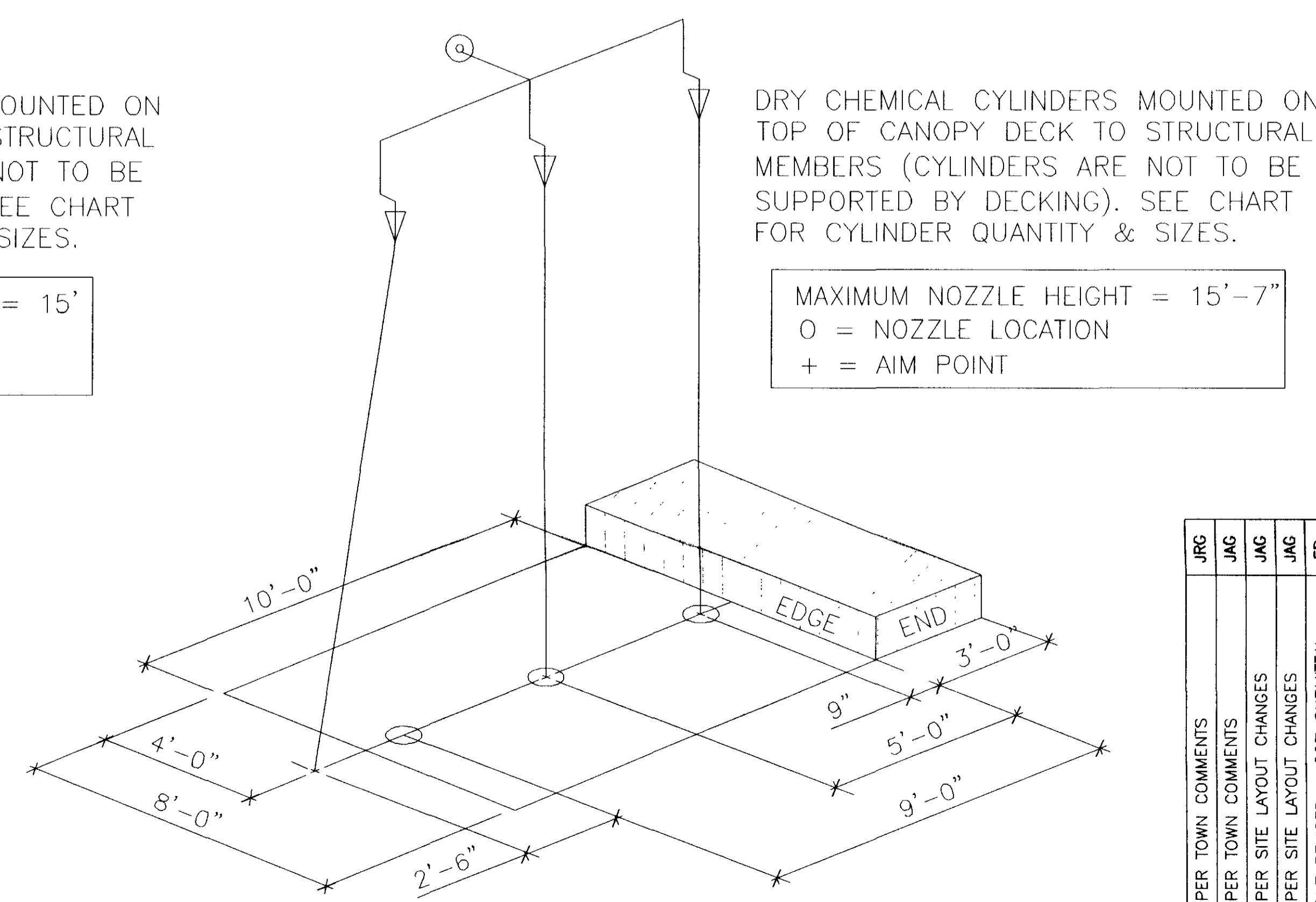
PLAN VIEW FOR SYSTEM  
(TYPICAL OF 5)  
SCALE: 1/4" = 1'

MISCELLANEOUS CHARTS

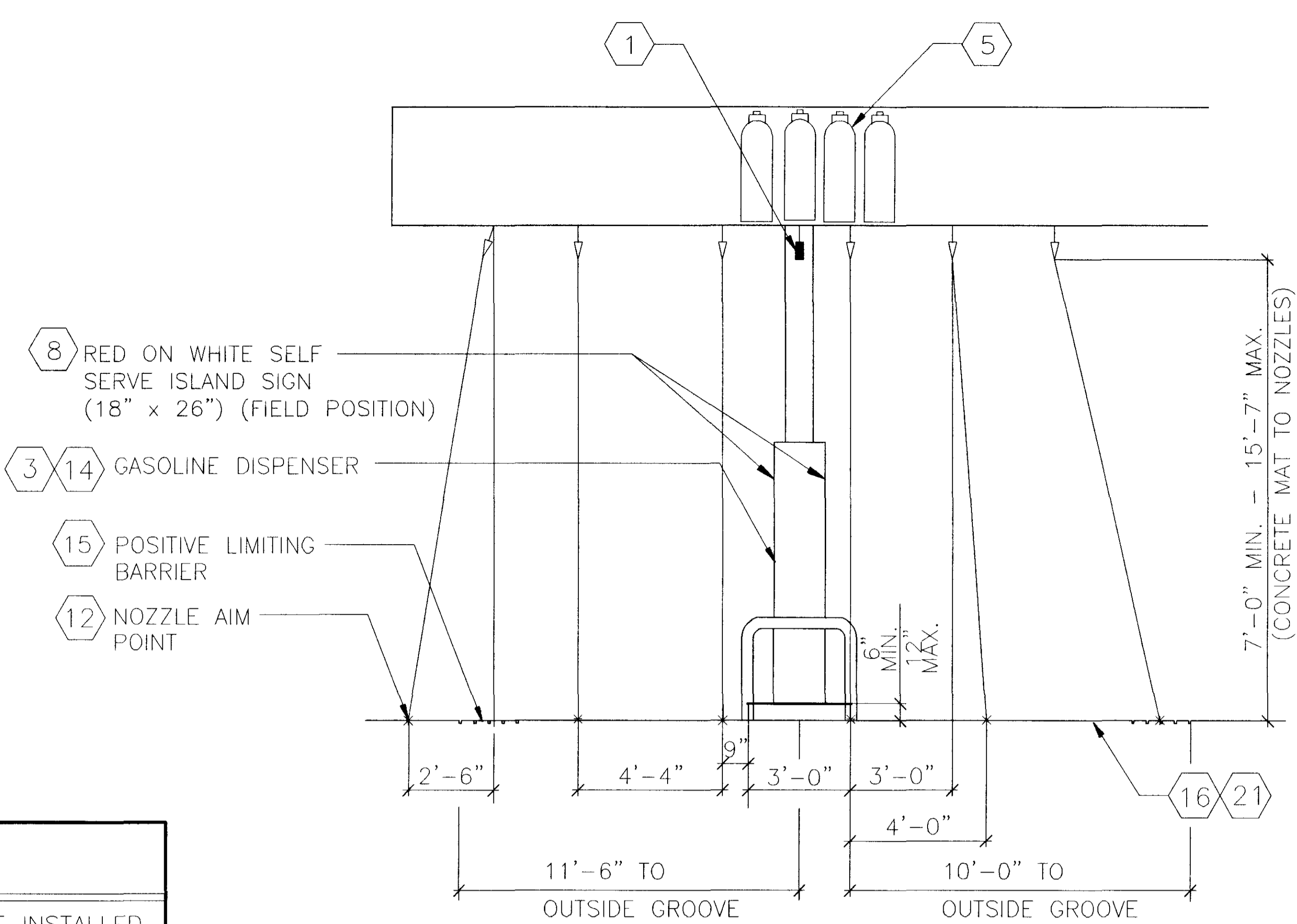
**SPECIAL NOTE:**  
IN THE EVENT OF A CONFLICT BETWEEN THIS DRAWING AND THE UL LISTED PYRO-CHEM INC. "THE ATTENDANT II" TECHNICAL MANUAL, THE TECHNICAL MANUAL SHALL GOVERN.  
NOTIFY ENGINEER IMMEDIATELY OF ANY CONFLICT



END OF ISLAND PROTECTION  
SCALE: NONE



MAIN ISLAND AREA PROTECTION  
SCALE: NONE



END VIEW - MAIN ISLAND AREA PROTECTION  
SCALE: 1/4" = 1'-0"

END VIEW - END OF ISLAND PROTECTION  
SCALE: 1/4" = 1'-0"

GENERAL NOTES:

- THE THERMAL DETECTORS SHALL BE MOUNTED ON THE CANOPY'S UNDERSURFACE OR ON THE UNDERSIDE OF AN 18"x18"x2" HEAT COLLECTOR AND NO HIGHER THAN THE NOZZLES.
- THE THERMAL DETECTORS SHALL BE INSTALLED ON FIFTEEN (15) FOOT MAXIMUM CENTERS ALONG A SINGLE LINE SYMMETRICALLY OVER THE CENTER OF THE AREA BEING PROTECTED.
- NOZZLE AND HOSE FROM EACH PETROLEUM PRODUCT DISPENSER SHALL NOT EXTEND BEYOND POSITIVE LIMITING BARRIER AND NO PETROLEUM PRODUCT SHALL BE DISPENSED BEYOND POSITIVE LIMITING BARRIER.



NOTES:

- DIMENSIONS 18" BY 26" WHITE BACKGROUND WITH RED MASKING
- LETTERING SIZE AND ARRANGEMENT SHALL BE IN BLOCK LETTERS MIN. HEIGHT 2". AS SHOWN TO RIGHT.

8 NO SMOKING - TURN-OFF ENGINE SIGN

LEGEND

- 190' AUTOMATIC THERMOSTAT INSTALLED ON 15 FOOT MAXIMUM CENTERS INTERCONNECTED TO FIRE SUPPRESSION SYSTEM. CENTER OF EACH ISLAND ABOVE DISPENSERS. SEE GENERAL NOTE #1.
- CCTV CAMERA MOUNTED TO OVERHEAD CANOPY COLUMN AT ISLAND WITH CCTV MONITOR(S) LOCATED NEAR CASH REGISTER AT THE TRANSACTION AREA WITHIN THE BUILDING.
- INTERCOM SPEAKERS AT EACH DISPENSER WITH MASTER CONTROL LOCATED AT CENTRAL CONTROL AREA.
- OVERHEAD FIRE SUPPRESSION PIPING (SUPPLY).
- DRY CHEMICAL CYLINDERS AS REQUIRED BY MANUFACTURER OF SUPPRESSION SYSTEM WITH REFERENCE TO U/L APPROVED INSTALLATION AND MAINTENANCE MANUAL.
- OVERHEAD FIRE SUPPRESSION PIPING (DISTRIBUTION).
- NOZZLE.
- NO SMOKING AND TURN OFF ENGINE SIGN.
- GASOLINE DISPENSER CONTROL CONSOLE EQUIPMENT WITH COMPLETE EQUIPMENT SHUTDOWN EMERGENCY MODE U/L APPROVED.
- PERIMETER OF SELF SERVE GASOLINE DISPENSING AREA.
- SELF SERVE GASOLINE DISPENSING AREA.
- APPROPRIATE INSTRUCTIONS FOR USE AT EACH SELF SERVE DISPENSING AREA.
- TRAFFIC ARROWS.
- SAFETY BARRIAGE.
- LIGHTING WITHIN SELF SERVE DISPENSING AREA.
- CONCRETE MAT SURROUNDING THE DISPENSING AREA SHALL BE MADE AS LEVEL AS POSSIBLE.
- FACILITY.
- MANUAL RELEASE LOCATED IN CONTROL CENTER CONVENIENT TO ATTENDANT.
- REMOTE RELEASE ENGINEERED BY FACTORY, INSTALLED BY AUTHORIZED FIRE SUPPRESSION CONTRACTOR.

ALL DISCHARGE PIPING, TEES, ELBOWS, UNIONS AND FITTINGS THAT ARE PART OF THE DISTRIBUTION SYSTEM OF THE DRY CHEMICAL PRE-ENGINEERED FIXED FIRE EXTINGUISHING SYSTEM AT SELF SERVE MOTOR FUEL FACILITIES SHALL BE SCHEDULE 40 BLACK, GALVANIZED, STAINLESS STEEL, OR CHROME PLATED PIPE AND INSTALLED IN ACCORDANCE WITH MANUFACTURER U/L LISTED INSTALLATION MANUAL.

NOTES:

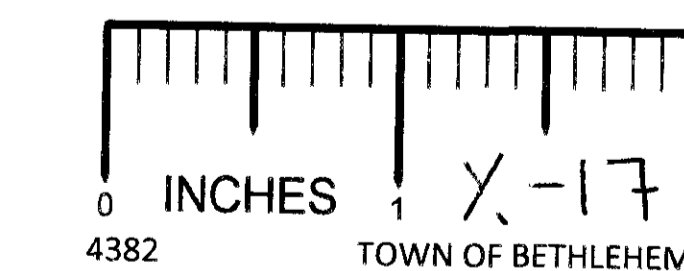
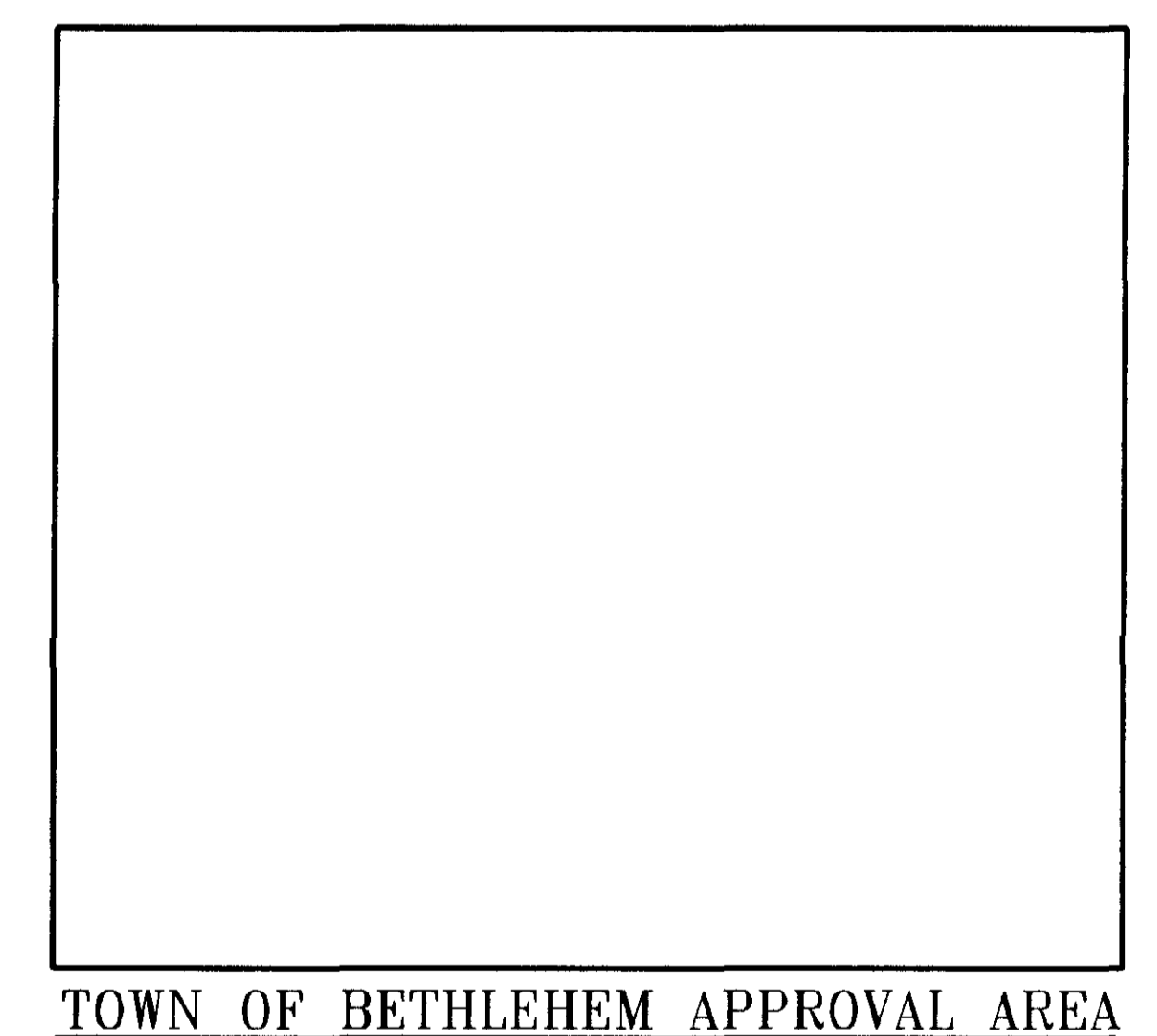
- AT LEAST SEMI-ANNUALLY ALL DISCHARGE NOZZLES, PIPING, DRY CHEMICAL CONTAINERS, HEAT COLLECTORS ETC. SHALL BE INSPECTED BY APPROVED AND CERTIFIED COMPANIES (TYPES-B&D) AND INDIVIDUAL (TYPES-F&H) AND REPORTS OF SUCH INSPECTIONS SUBMITTED TO HEAD OF THE FIRE DEPARTMENT.
- NO FIXED FIRE EXTINGUISHING SYSTEM WILL BE INSTALLED UNTIL AND ONLY AFTER THE DATE OF APPROVAL OF THE SELF-SERVICE MOTOR FUEL FACILITY. THE INSTALLATION SHALL BE TAKEN FROM AND IN ACCORDANCE WITH APPROVED/STAMPED PLANS FROM THE STATE FIRE MARSHAL MARKED SUPPRESSION SYSTEM INSTALLER COPY. VIOLATION OF THIS STATEMENT WILL NULLIFY AND VOID THE APPROVAL OF THIS SELF-SERVICE APPLICATION.
- A STATE FIRE MARSHAL APPROVED SIGN SHALL BE INSTALLED ABOVE EACH PRODUCT DISPENSER ON THE SELF SERVE ISLAND(S).
- EXISTING SELF SERVICE FACILITIES SHALL BE SUBJECTED TO RESUBMITAL AND REVIEW SHOULD ANY OF THE FOLLOWING ITEMS OCCUR:
  - ALTERATIONS TO THE PRE-ENGINEERED FIXED EXTINGUISHING SYSTEM(S) OTHER THAN NORMAL MAINTENANCE PROCEDURES.
  - ALTERATIONS TO THE SELF SERVICE DISPENSING ISLAND ARRANGEMENT(S) RESULTING IN A CHANGE OF HAZARD AREA PROTECTION.
  - ALTERATIONS OR ENVIRONMENTAL CHANGES RESULTING IN THE INABILITY OF A CONSOLE OPERATOR TO CONSTANTLY OBSERVE THE DISPENSING OPERATION. THIS ITEM SHALL BE DETERMINED BY THE LOCAL HEAD OF THE FIRE DEPARTMENT.
  - CHANGES OR ALTERATIONS IN THE METHOD OF DISPENSING MOTOR FUEL.

FIRE SUPPRESSION NOTES:

- FIRE SUPPRESSION SYSTEM AND ASSOCIATED COMPONENTS SHALL BE INSTALLED BY A LICENSED FIRE SUPPRESSION SYSTEM INSTALLER CERTIFIED FOR SUCH INSTALLATION BY THE SYSTEM MANUFACTURER.
- THE PROPOSED FIRE SUPPRESSION SYSTEM AND SYSTEM COMPONENTS SHALL BE INSTALLED IN ACCORDANCE WITH ALL APPLICABLE CODES AND REGULATIONS. INSTALLATION OF THIS SYSTEM SHALL CONFORM TO THE REQUIREMENTS OF THE SYSTEM MANUFACTURER, THE SOUTH BETHLEHEM FIRE DEPARTMENT, AND ALSO THE NEW YORK STATE FIRE MARSHAL'S OFFICE REQUIREMENTS.
- SYSTEM INSTALLER IS RESPONSIBLE FOR REVIEWING THIS PLAN FOR COMPLIANCE WITH THE REQUIREMENTS OF THE SYSTEM MANUFACTURER PRIOR TO INSTALLATION. IT IS THE INSTALLER'S RESPONSIBILITY TO NOTIFY THE ENGINEER OF RECORD IMMEDIATELY OF ANY CONFLICTS. FAILURE TO NOTIFY THE ENGINEER OF RECORD SHALL CONSTITUTE ACCEPTANCE OF FULL RESPONSIBILITY BY THE CONTRACTOR TO COMPLETE THE SCOPE OF WORK AS DEFINED BY THE DRAWINGS AND IN FULL CONFORMANCE WITH ALL APPLICABLE CODES AND REQUIREMENTS.
- THIS PLAN WAS PREPARED USING THE SYSTEM MANUFACTURER'S GUIDELINES AND IS INTENDED FOR GENERAL LAYOUT PURPOSES ONLY.

I, \_\_\_\_\_ CHIEF OF DEPARTMENT OR HIS DESIGNEE, HAVE REVIEWED THE ATTACHED INFORMATION AND HAVE ACKNOWLEDGMENT OF.  
CITY/TOWN: \_\_\_\_\_  
DATE: \_\_\_\_\_

FOR FIRE MARSHAL USE



<p><b>BOHLER ENGINEERING, P.C.</b> CIVIL &amp; CONSULTING ENGINEERS ■ PROJECT MANAGERS ■ ENVIRONMENTAL &amp; SITE PLANNERS ■ MUNICIPAL ENGINEERS</p> <p>Other Office Locations: ■ Chalfont, PA ■ Melville, NY ■ Sterling, VA ■ Watchung, NJ ■ Towson, MD ■ Southboro, MA</p> <p>5 Computer Drive West, Suite 203 Albany, New York 12205 518.438.9900 fax 518.438.0900 www.bohlereng.com</p>		<p>PROJECT: CUMBERLAND FARMS, INC. PROP. CONVENIENCE STORE &amp; GAS STATION LOTS 7, 8 &amp; 12, BLOCK 1, SECTION 121.04 NEW YORK STATE HIGHWAY ROUTE SW TOWN OF BETHLEHEM, ALBANY COUNTY, NEW YORK</p> <p>TITLE: PYRO-CHEM, INC. "THE ATTENDANT II" GASOLINE FIRE SUPPRESSION SYSTEM</p> <p>SCALE: (H) AS NOTED (V) NOTED DATE: 07/03/06 DRAWN BY: JAC PROJECT No: B050649 CHECKED BY: RJS CAD I.D. #: B050649r54</p> <p>SHEET No: 18 OF 19 REV. No: 6</p>
<p>11/6/07 REVISED PER TOWN COMMENTS</p> <p>10/29/07 REVISED PER SITE LAYOUT CHANGES</p> <p>08/09/07 REVISED PER SITE LAYOUT CHANGES</p> <p>12/12/06 REVISED PER SITE LAYOUT CHANGES - 90% SUBMITTAL</p> <p>11/21/06 SITE LAYOUT REVISED - 90% SUBMITTAL</p> <p>10/24/06 BLDG. FOOTPRINT REVISED</p>	<p>PROFESSIONAL ENGINEER NEW JERSEY LICENSE No. 27410 PENNSYLVANIA LICENSE No. 37184 MASSACHUSETTS LICENSE No. 42544 NEW YORK LICENSE No. 63409 CONNECTICUT LICENSE No. 171518 MISSISSIPPI LICENSE No. 37025</p>	<p>PROFESSIONAL ENGINEER NEW YORK LICENSE No. 071284 MASSACHUSETTS LICENSE No. 42544 NEW YORK LICENSE No. 7268 CONNECTICUT LICENSE No. 21854 NEW HAMPSHIRE LICENSE No. 10280</p>