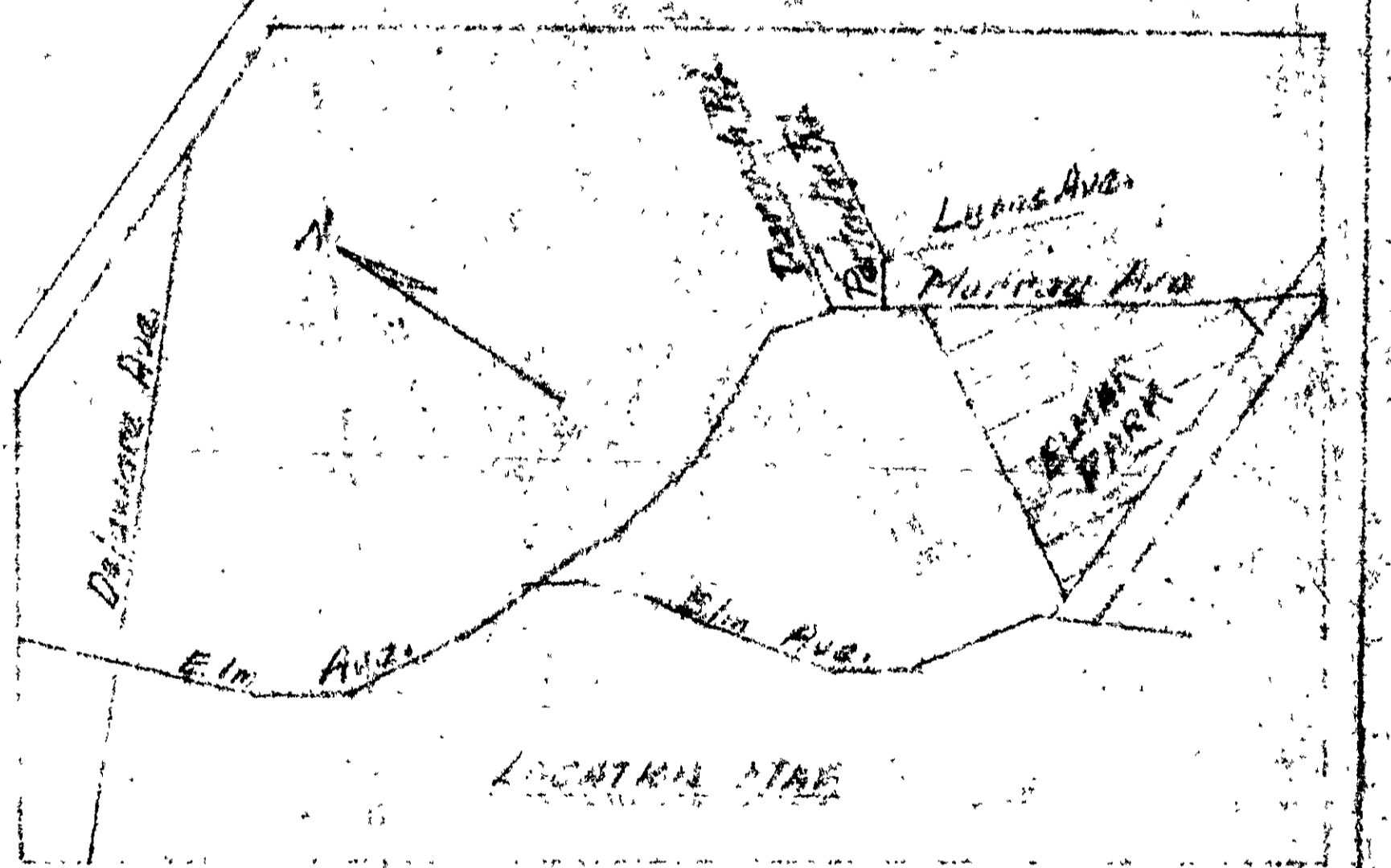


$\frac{26}{1460}$   
 $\frac{520}{3720}$   
 $\frac{320}{2920}$

NY State Parcel #1  
 (Approximation for Deane St. Pass)



- NOTE
- 1- Except as noted on drawing, Storm Drain, Tapped Invert, Arma Pipe (12" dia)
  - 2- 6" dia. Transit Pipe for Catcher Drain Pickups
    - a- Individual catcher drains to be equipped with sump pump.
    - b- In individual catcher drain to be provided with check valve to prevent back flow.
  - 3- Finished street Elevation 213.41
  - 4- Finished contour lines 213

**APPROVED DRAINAGE PLAN**  
 FOR DRAINS NOT DESIGNED ~~APPROVED~~  
 OK 16 JUNE 1966

RED INDICATES DRAINAGE SYSTEM REVISED - 9 MAR, 1966

**ELMAR PARK**  
 DRAINAGE MAP

TOWN OF BETHLEHEM  
 COUNTY OF ALBANY, N.Y.

by *J. W. [Signature]* Lic. # 2081  
 Dated JAN. 10, 1966

