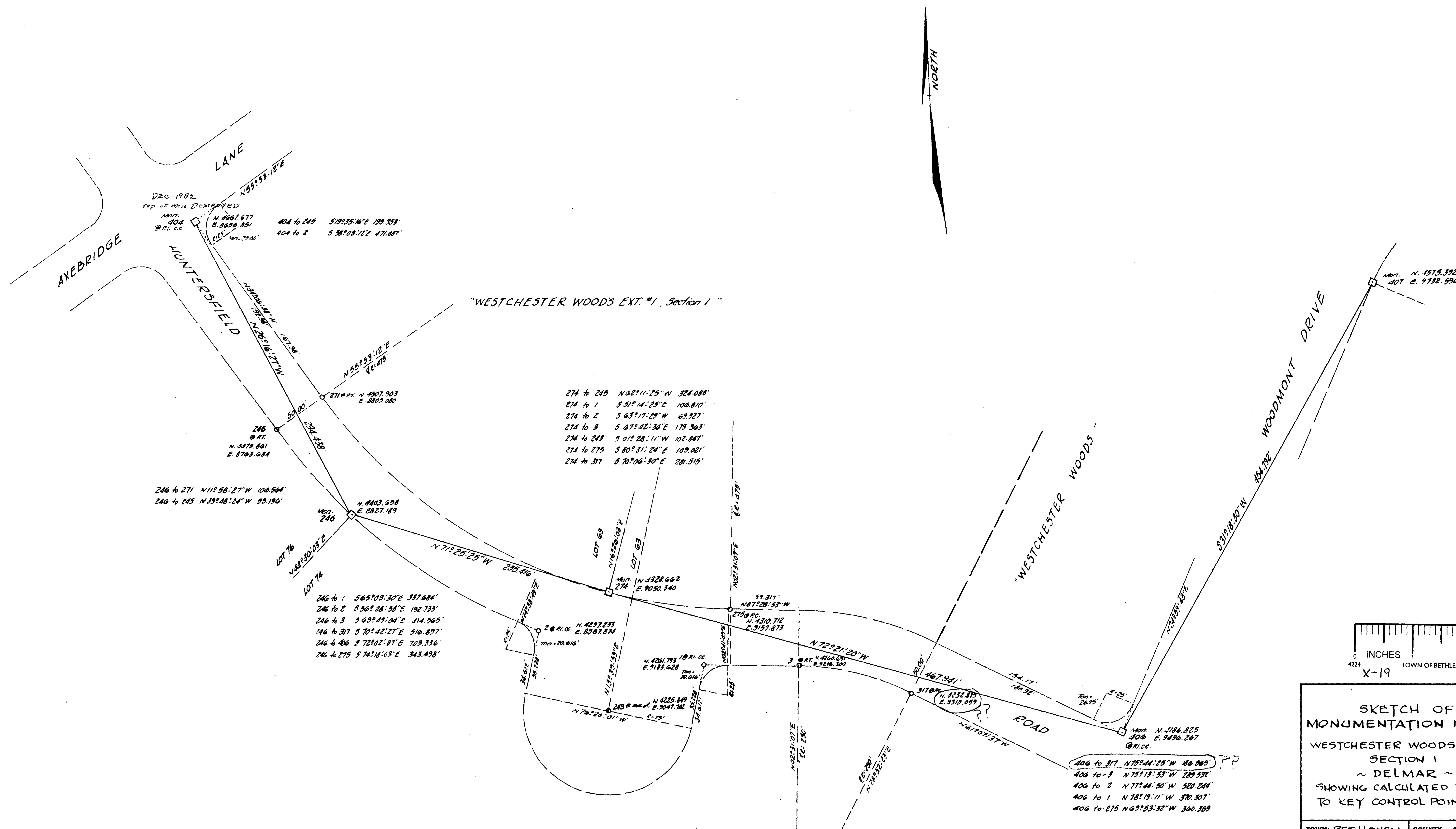


REVISIONS

NO.	DATE	DESCRIPTION



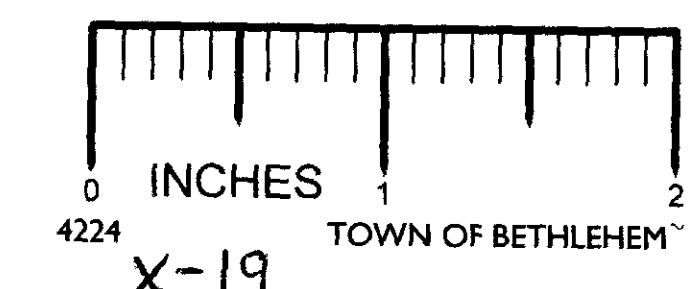
DEC 1982
TOP OF MARK DESTROYED
MONT. 704
@ R.I.C.
N. 4667.677
E. 8639.851
404 to 249 519°35'W 199.535'
404 to 2 538°09'12"E 471.087'

274 to 245 N 62°11'25" W 324.088'
274 to 1 S 51°14'25" E 106.810'
274 to 2 S 63°17'29" W 69.927'
274 to 3 S 67°40'36" E 179.363'
274 to 243 S 01°28'11" W 102.847'
274 to 275 S 80°31'24" E 109.021'
274 to 317 S 70°06'30" E 281.515'

246 to 271 N 112°58'27" W 100.504'
246 to 245 N 39°48'24" W 99.196'

246 to 1 S 65°03'30" E 337.004'
246 to 2 S 56°28'58" E 192.733'
246 to 3 S 69°49'04" E 414.565'
246 to 317 S 70°42'27" E 516.897'
246 to 406 S 72°02'37" E 703.336'
246 to 275 S 74°18'03" E 343.498'

406 to 317 N 75°44'25" W 186.569'
406 to 3 N 75°13'53" W 289.531'
406 to 2 N 77°44'50" W 520.244'
406 to 1 N 78°19'11" W 370.307'
406 to 275 N 63°53'32" W 360.359'



SKETCH OF
MONUMENTATION NET
WESTCHESTER WOODS EXT. #1
SECTION 1
~ DELMAR ~
SHOWING CALCULATED TIES
TO KEY CONTROL POINTS

TOWN: BETHLEHEM	COUNTY: ALBANY
STATE: NEW YORK	DATE: 23 JAN. 1973
SCALE: 1" = 50'	REVISION NO:

Map Prepared by
EDWARD W. BOUTELLE & SON
Civil Engineers & Surveyors
Delmar, New York

SHEET 1 OF 1 FILE NO GRID NUMBER - SKETCH TO BE FILED IN WEST. WDS EXT #1 FOLDER