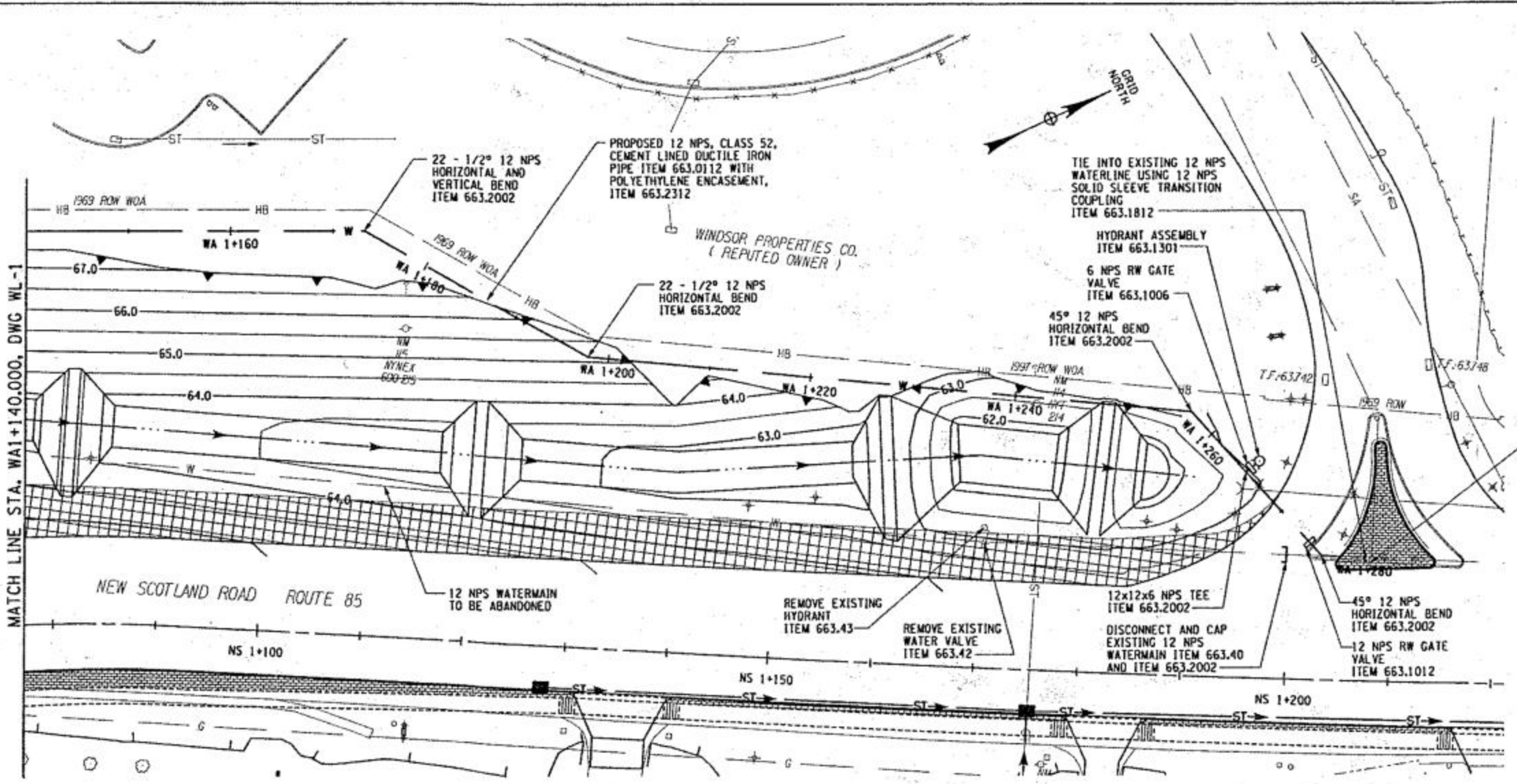
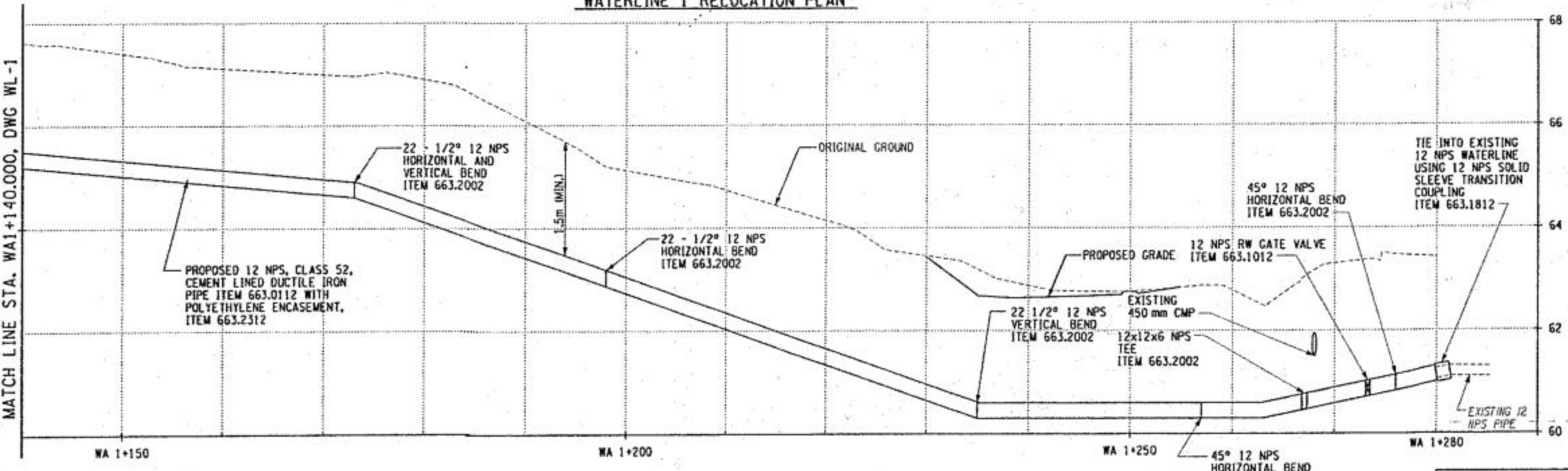


FED. ROAD REG. NO.	STATE	CONTRACT NO.	SHEET NO.	TOTAL SHEETS
1	N.Y.	D260243	303	378
P.L.N. 1125.24		B.I.N. 1-06029-0; 1-07884-0		
ALBANY COUNTY				
S.H. NO. 2006-1, SLINGERLANDS BYPASS - PART 3				
F.A.S.H. NO 64-13, SLINGERLANDS BYPASS - PART 2, (MAHER ROAD TO ALBANY CITY LINE)				
S.H. NO. 5237, SLINGERLANDS-ALBANY				
N.Y.S. ROUTE 140 TO THE ALBANY CITY LINE				

CHECKED BY M. HURTT  
 DRAFTED BY K. RAPELLO  
 ESTIMATED BY M. MOKEY  
 CHECKED BY M. HURTT  
 DESIGNED BY I. OTTINI  
 JOB MANAGER I. OTTINI  
 W. ECKER  
 DESIGN SUPERVISOR

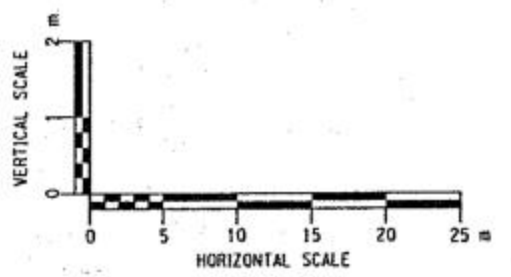


**WATERLINE 1 RELOCATION PLAN**



**WATERLINE 1 RELOCATION PROFILE**

**NOTES:**  
 1. SEE DRAWING WL-1 FOR GENERAL WATERLINE NOTES.



ALL DIMENSIONS ARE IN m, UNLESS OTHERWISE NOTED  
 AS BUILT REVISIONS

SIGNATURE	DATE
<b>WATERLINE DETAILS</b>	

**STATE OF NEW YORK**  
 DEPARTMENT OF TRANSPORTATION

DOCUMENT NAME	REGION	DATE	DRAWING NO.
112519B_UJL.DGN	1	04/06	WL-2

  
CLASH HANDBOOK & ASSOCIATES LLP  
 80 South Street, PO Box 500, Albany, NY 12242  
 518-486-0000 • www.clash.com

FILE NAME = u:\7718\mstr\03\112519b\_uj.dgn  
 DATE = 3/29/2006  
 USER = 2467