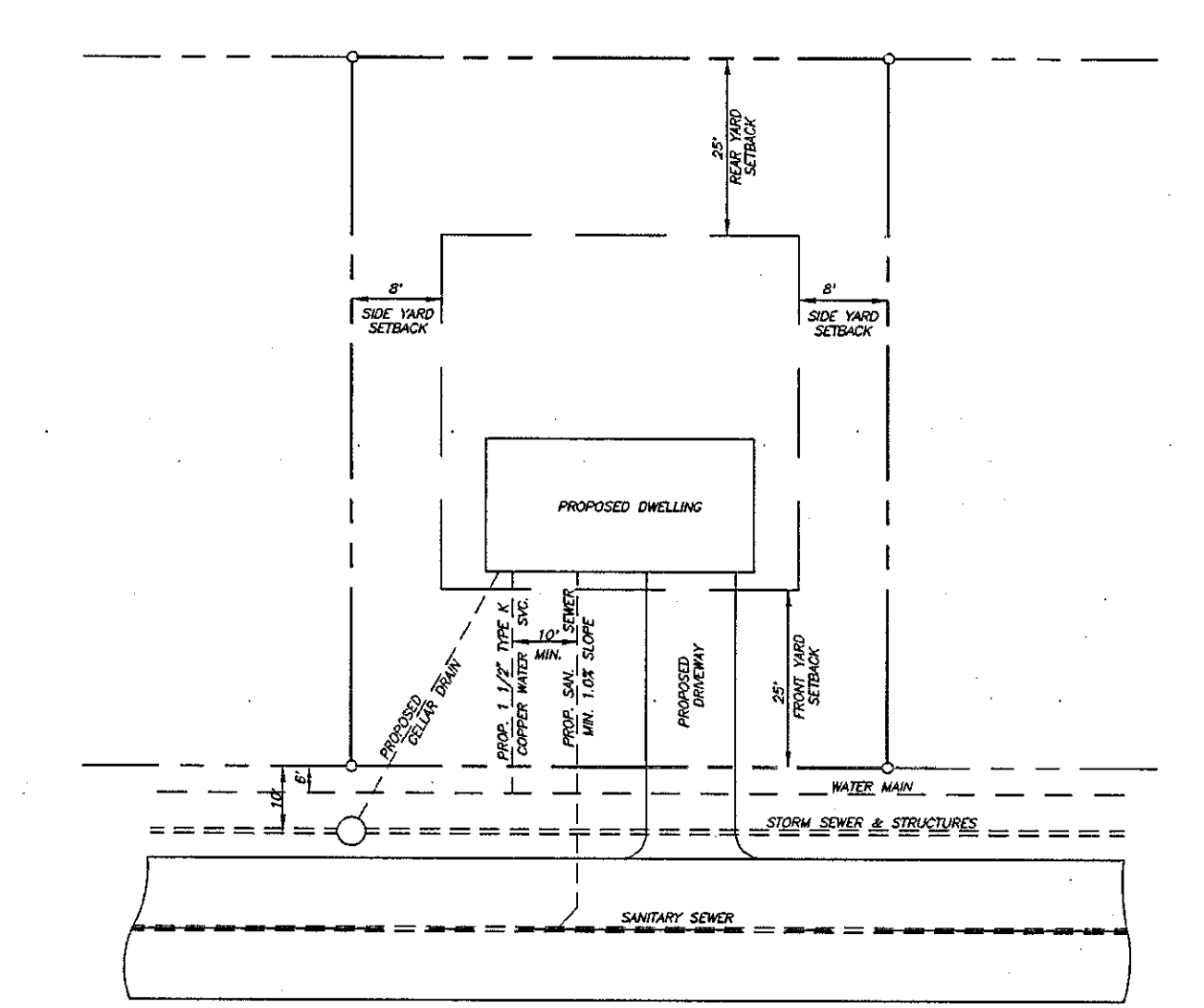
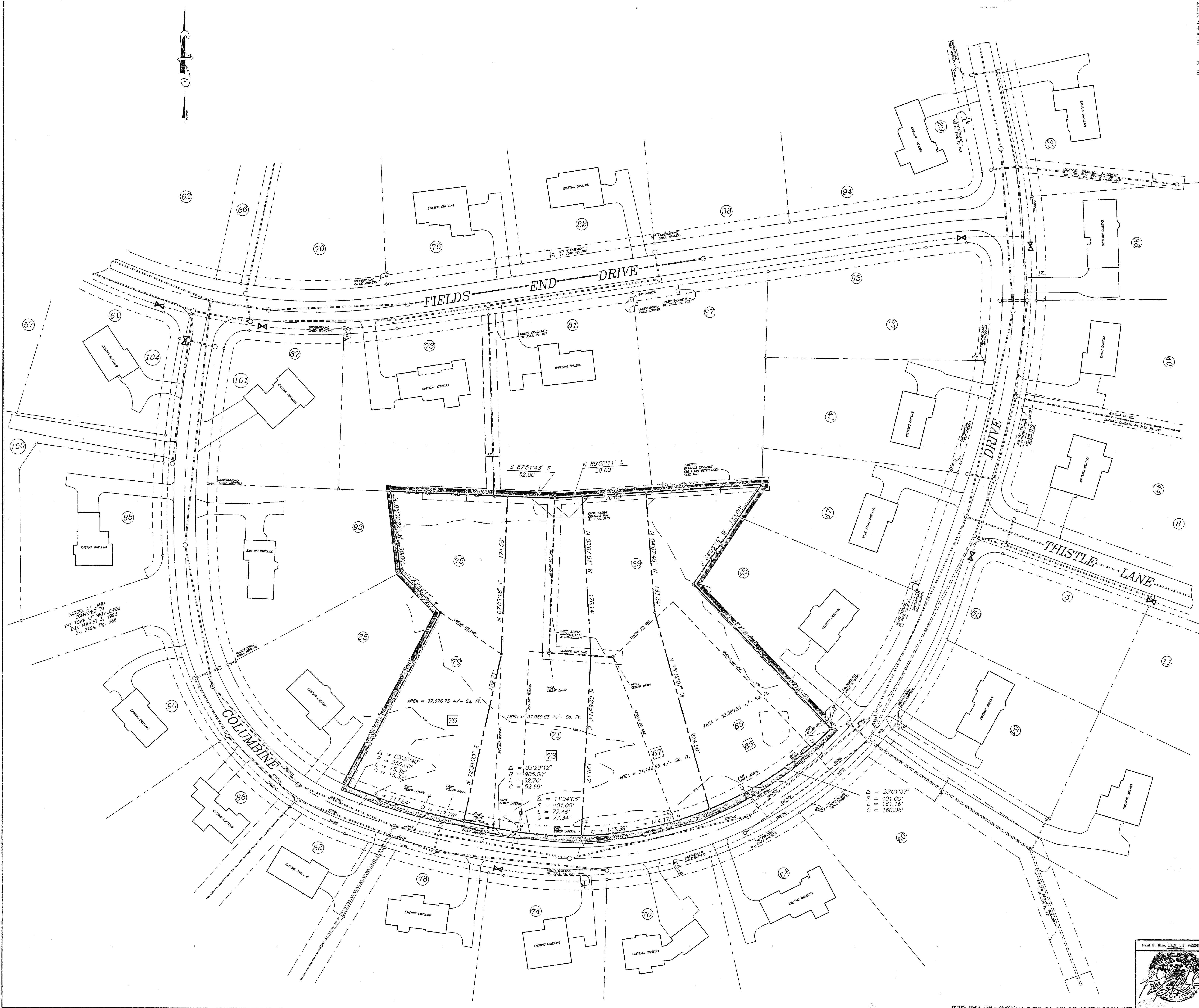


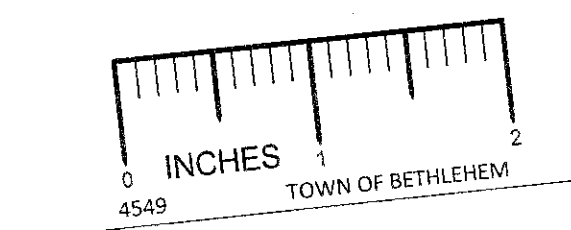
MAP REFERENCE:
 The Meadows At Bethlehem, A New York Partnership & York Land Development Corporation,
 "The Meadows Subdivision, Section 2," dated September, 1989, revised to May 5, 1993, by
 Paul E. Hite, L.S. and J. Kenneth Fraser and Associates, P.C., as filed in the Albany County
 Clerk's Office on May 24, 1993, in drawer 172, as map no. 9770.

NOTES:
 1. Subdivision is located in "AB" Residential Zone.
 2. Subdivision is located in Water District No. 1, Bender Lane Extension (WD216).
 3. Subdivision is located in Bethlehem School District.
 4. Subdivision is located in Elmere Fire District (FD202).
 5. Proposed revised Lots meet all zoning requirements.
 6. Utility easement recorded in the Albany County Clerk's Office on January 28, 1994, in Book
 2502 of deeds, at page 202, includes Niagara Mohawk Power Corporation and New York
 Telephone Co. There is physical indication that Cable Television is located in the same easement.
 7. [29] denotes original Lot Number.
 8. [23] denotes proposed Lot Number.



TYPICAL LOT LAYOUT
 (NOT TO SCALE)

TOWN OF BETHLEHEM PLANNING BOARD
 TOWN OF BETHLEHEM
 ALBANY COUNTY, NEW YORK
FINAL PLAT APPROVAL
 WHEN SIGNED BY THE DULY AUTHORIZED
 OFFICER OF THE PLANNING BOARD, THIS
 ENDORSEMENT CONSTITUTES FINAL APPROVAL
 OF THIS PLAT
 SIGNED: *Charles C. Hadjilov*
 TITLE: CHAIRMAN
 DATE: JUL 09 1998
 SEE ALSO CERTIFICATE OF APPROVAL
 OF FINAL PLAT NO. 80-S2-F-145



MAP OF PROPOSED
LOT LINE REVISIONS
LOTS No. 59, 63, 71, 75 & 79
COLUMBINE DRIVE
"THE MEADOWS SUBDIVISION SECTION 2"
 TOWN OF BETHLEHEM

COUNTY:	ALBANY
STATE:	NEW YORK
SCALE:	1" = 40'
DATE:	MAY 20, 1998
DRAWN BY:	JHD
MAP NO.:	365E

MAP PREPARED BY:
PAUL E. HITE
 LICENSED LAND SURVEYOR
 230 DELAWARE AVENUE
 DELMAR, NEW YORK 12054
 (518) 439-4989

