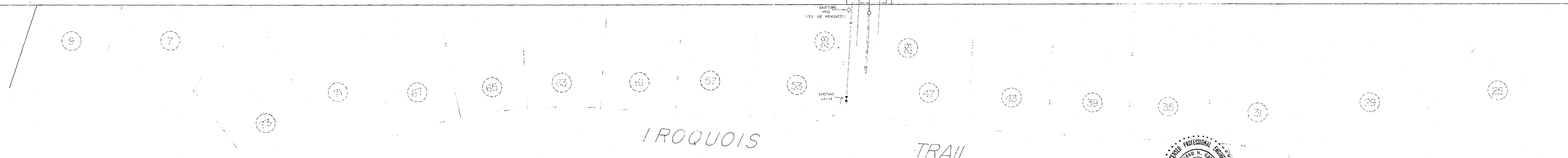
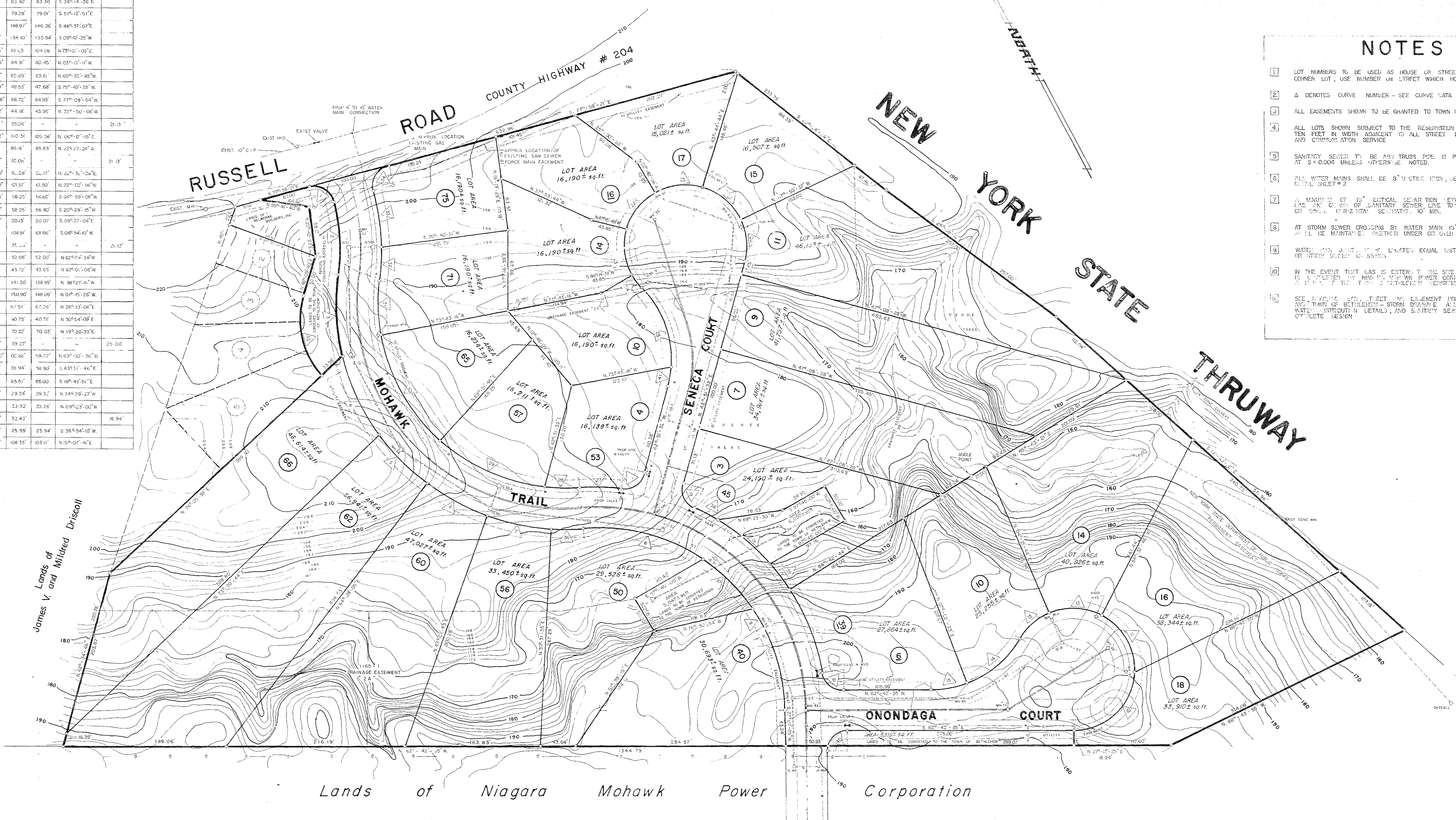


REVISIONS		
NO.	DATE	DESCRIPTION
1	3/25/90	REVISIONS - SEE LETTER
2	8/2/90	REVISIONS - SEE LETTER
3	10/10/90	ADDITIONAL TRAIL
4	12/7/90	AS PER TOWN ENGINEER'S REVISION
5	2/26/91	PARCEL "C" REVISION
6	4/12/91	SEWER REVISION AND NOTES ADDED

CURVE DATA					
STATION	RADIUS	CHORD BEARING	CHORD LENGTH	CHORD BEARING	TANGENT
1	25.00'	90°-00'-00"	33.27'	-	25.00'
2	25.00'	225°-07'-12"	96.79'	90°-18'	S 23°-25'-15" W
3	275.00'	20°-59'-25"	100.75'	100°-15'	S 20°-43'-08" W
4	275.00'	22°-05'-55"	106.07'	105°-47'	S 20°-04'-58" W
5	275.00'	17°-25'-22"	84.42'	84°-08'	S 18°-44'-14" E
6	275.00'	17°-25'-22"	84.42'	83°-30'	S 24°-14'-36" E
7	275.00'	16°-31'-08"	79.26'	79°-01'	S 15°-12'-51" E
8	225.00'	37°-56'-02"	148.97'	148°-26'	S 48°-37'-07" E
9	225.00'	39°-09'-59"	136.40'	133°-54'	S 29°-47'-25" W
10	75.00'	87°-52'-33"	45.13'	104°-08'	N 75°-52'-09" E
11	75.00'	66°-52'-06"	64.97'	80°-40'	N 23°-02'-47" W
12	75.00'	50°-17'-02"	65.69'	63°-6'	N 60°-32'-48" W
13	75.00'	37°-04'-58"	48.52'	47°-68'	S 78°-49'-58" W
14	125.00'	39°-44'-58"	86.72'	64°-39'	S 77°-09'-54" W
15	125.00'	20°-15'-05"	44.48'	43°-35'	N 72°-52'-06" W
16	254.17'	80°-04'-21"	350.81'	-	-
17	275.00'	22°-09'-02"	110.31'	89°-56'	N 66°-12'-18" E
18	275.00'	17°-57'-16"	86.18'	85.83'	N 25°-27'-26" W
19	25.00'	40°-41'-27"	35.04'	-	-
20	75.00'	45°-41'-17"	51.28'	51°-17'	N 42°-31'-08" E
21	75.00'	08°-24'-32"	63.37'	63.50'	N 20°-02'-56" W
22	75.00'	44°-29'-53"	58.25'	50°-40'	S 24°-59'-08" W
23	75.00'	44°-29'-53"	58.25'	56°-50'	S 20°-29'-18" W
24	75.00'	15°-22'-48"	20.15'	20°-07'	S 29°-27'-07" E
25	125.00'	48°-05'-16"	104.91'	101.96'	S 28°-54'-10" W
26	275.00'	27°-26'-47"	25.00'	-	-
27	275.00'	10°-51'-02"	52.00'	52°-00'	N 62°-04'-34" W
28	444.90'	11°-08'-00"	43.72'	43°-05'	N 62°-01'-08" W
29	444.90'	33°-05'-54"	141.33'	138.95'	N 38°-27'-41" W
30	225.00'	38°-25'-35"	150.95'	148.09'	N 40°-15'-36" W
31	225.00'	17°-11'-30"	67.51'	67.25'	N 35°-33'-06" E
32	275.00'	08°-23'-24"	40.75'	40°-17'	N 30°-54'-09" E
33	414.70'	14°-37'-48"	70.32'	70°-03'	N 19°-20'-33" E
34	454.97'	30°-05'-02"	39.23'	-	-
35	75.00'	50°-17'-02"	65.69'	58°-27'	N 69°-30'-36" W
36	275.00'	08°-10'-44"	38.94'	38°-54'	S 63°-13'-44" E
37	225.00'	27°-46'-33"	65.51'	65.00'	S 18°-45'-01" E
38	275.00'	08°-00'-46"	28.54'	28°-32'	N 34°-29'-27" W
39	275.00'	08°-11'-58"	23.32'	23°-26'	N 39°-23'-00" W
40	250.00'	74°-18'-22"	32.42'	-	-
41	125.00'	11°-54'-44"	25.99'	25°-54'	S 35°-54'-10" W
42	100.00'	62°-04'-01"	108.33'	103.11'	N 19°-07'-47" E

- ### NOTES
- LOT NUMBERS TO BE USED AS HOUSE OR STREET NUMBERS FOR CORNER LOT, USE NUMBER ON STREET WHICH HOUSE FACES
 - A DENOTES CURVE NUMBER - SEE CURVE DATA TABLE
 - ALL EASEMENTS SHOWN TO BE GRANTED TO TOWN OF BETHELEM
 - ALL LOTS SHOWN SUBJECT TO THE RESERVATION OF AN EASEMENT TEN FEET IN WIDTH ADJACENT TO ALL STREET LINES, FOR ELECTRIC AND COMMUNICATION SERVICE
 - SANITARY SEWER TO BE 48" TRUSS PIPE OR PVC/SR-28 PIPE AT S=0.008 UNLESS OTHERWISE NOTED.
 - ALL WATER MAINS SHALL BE 8" X 10" STEEL IRON, LESS THAN 10% OF BETHLEHEM LEVEL SHEET #2
 - A MINIMUM OF 10" CERTICAL CLEARANCE BETWEEN INVERT OF WATER LINE AND INVERT OF SANITARY SEWER LINE TO BE MAINTAINED AT ALL CUTS AND HORIZONTAL SECTIONS, 10' MIN.
 - AT STORM SEWER CROSSING BY WATER MAIN 15' MINIMUM CLEARANCE SHALL BE MAINTAINED (VERTICAL UNDER CUT OVER)
 - WATER MAINS SHALL BE 3' MINIMUM EQUAL DISTANCE FROM SANITARY SEWER MAINS TO SEWERS
 - IN THE EVENT THAT GAS IS EXTENDED TO THIS SITE FINAL DESIGN WILL BE OBTAINED FROM NIAGARA MOHAWK POWER CORPORATION WITH THE WATER DISTRIBUTION DETAILS, AND SANITARY SEWER LEVELS FROM COMPLETE DESIGN
 - SEE PLANS FOR EASEMENT PROFILES, GENERAL NOTES, AND SPECIFICATIONS FOR SANITARY SEWER SYSTEMS

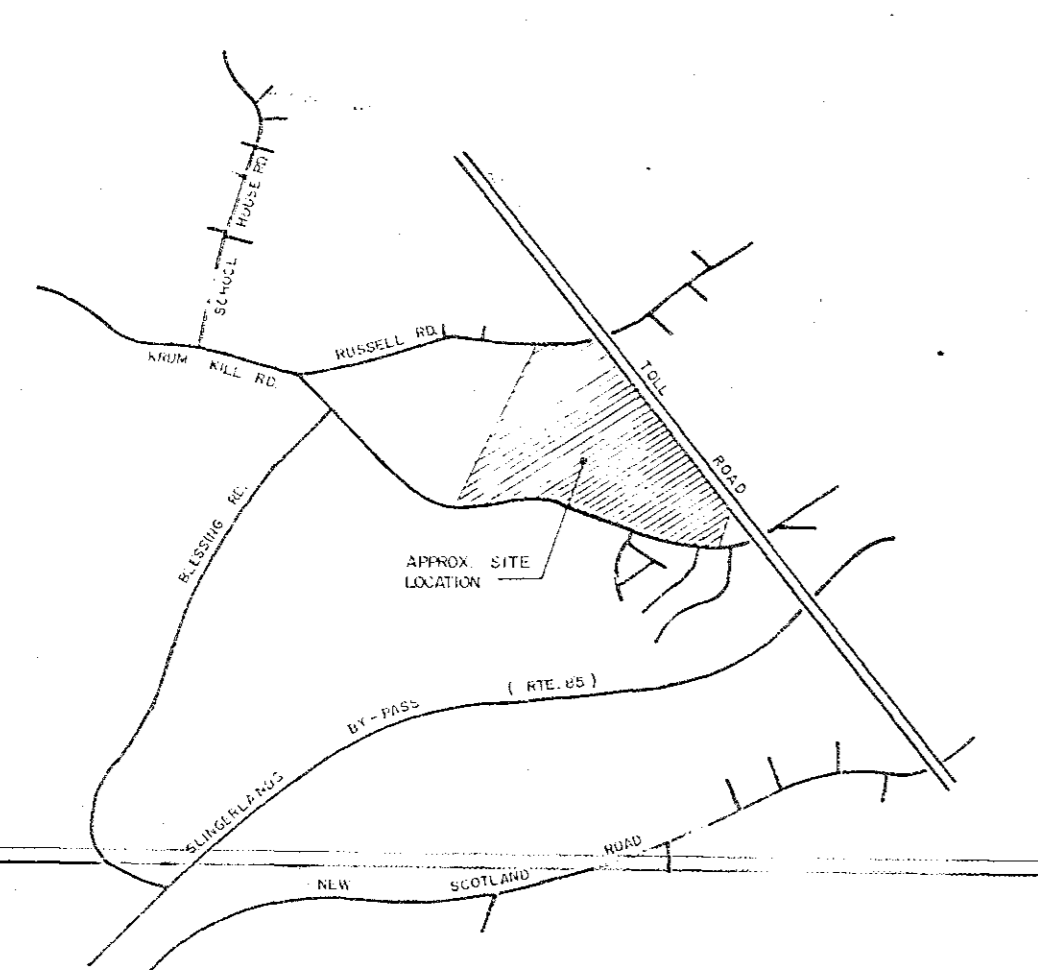


Lands of James V. and Mildred Driscoll

Lands of James V. and Mildred Driscoll

Lands of Niagara Mohawk Power Corporation

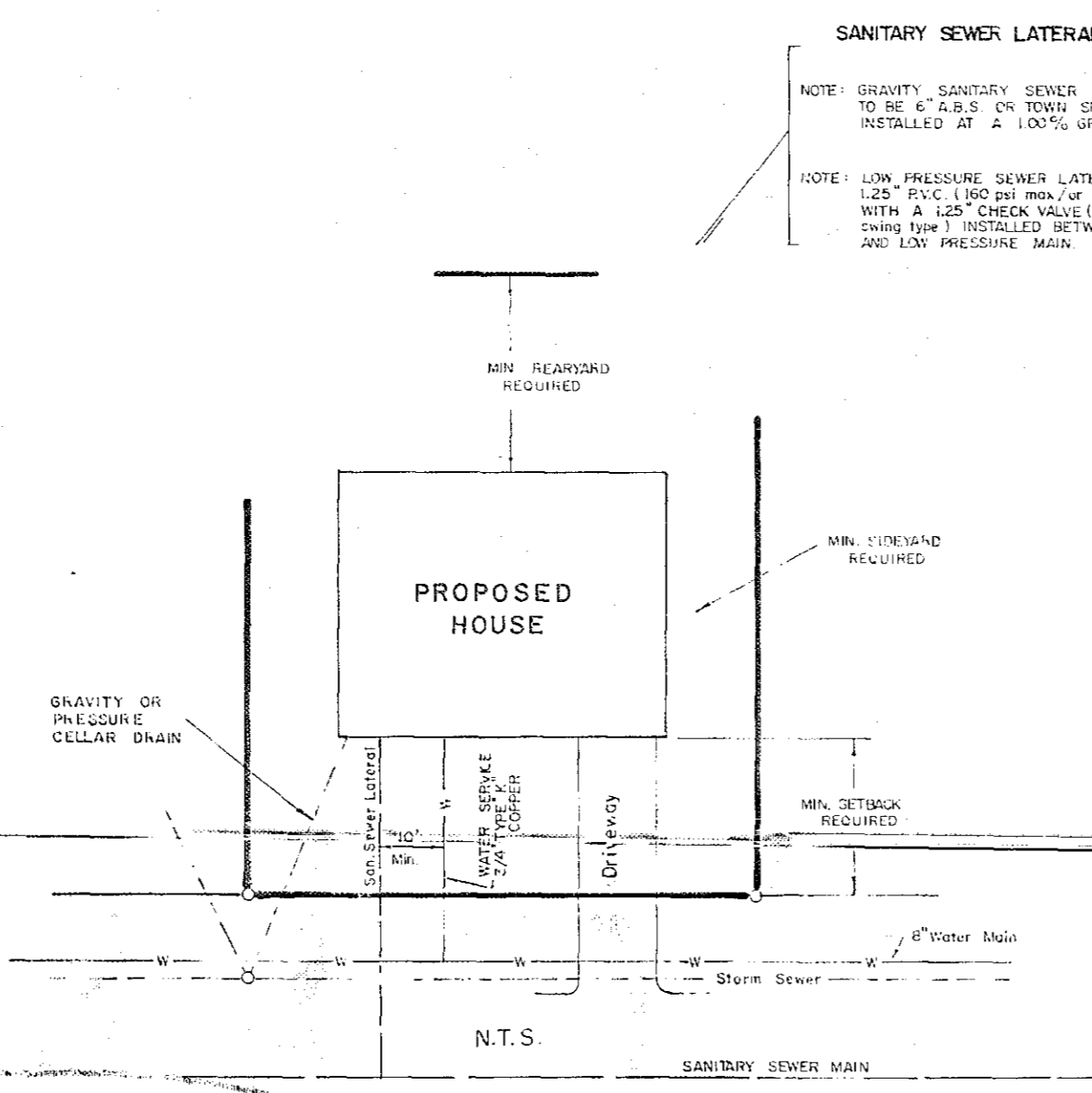
IROQUOIS TRAIL



VICINITY SKETCH
SCALE 1" = 2,000'

LEGEND

○	DENOTES	—	CATCH BASIN
○		—	MANHOLE
○		—	HYDRANT
○		—	GATE VALVE
○		—	TEE
○		—	WATER MAIN
○		—	GAS MAIN
○		—	STORM SEWER
○		—	SANITARY SEWER
○		—	FORCE MAIN



SANITARY SEWER LATERAL NOTES
NOTE: SANITARY SEWER LATERALS TO BE 4" DIA. IN TOWN SPECIFICATIONS RETAINED AT 1" UNLESS NOTED.
NOTE: LOW PRESSURE SEWER LATERALS TO BE 2" DIA. POLYPROPYLENE PIPE WITH A 1/2" GROUND COVER. SEE PLANS FOR DETAILS AND INSTALLATION INSTRUCTIONS.

ALBANY COUNTY HEALTH DEPARTMENT APPROVAL
ALBANY COUNTY DEPT. OF HEALTH
DATE JUN 13 1991
These Plans for Sewage Disposal and Water System Improvements, Examined and Approved
Stephen S. ...
DIRECTOR, DIVISION OF ENVIRONMENTAL HEALTH SERVICES

PLANNING BOARD APPROVAL
TOWN OF BETHELEM
ALBANY COUNTY, NEW YORK
FINAL PLAT APPROVAL
When signed by the duly authorized officer of the Planning Board, this endorsement constitutes final approval of this plat.
Signed *Walter ...*
Title *Chairman*
Date JUL 11 1991
See also Certificate of Approval of Final Plat No. *87-2-F*

Richard H. Green
Professional Engineer
No. 1000
State of New York

LOT LAYOUT SECTION NO. 2
INDIAN HILLS
PROPERTY OF
BELMONTE BUILDERS, INC.
TOWN OF BETHELEM ALBANY COUNTY
NEW YORK DATE SEP. 12, 1989
SCALE 1" = 50' REVISION NO. 6

SURVEY AND MAP BY
EDWARD W. BOUTELLE AND SON
CIVIL ENGINEERS
SURVEYORS
BETHELEM, N.Y.