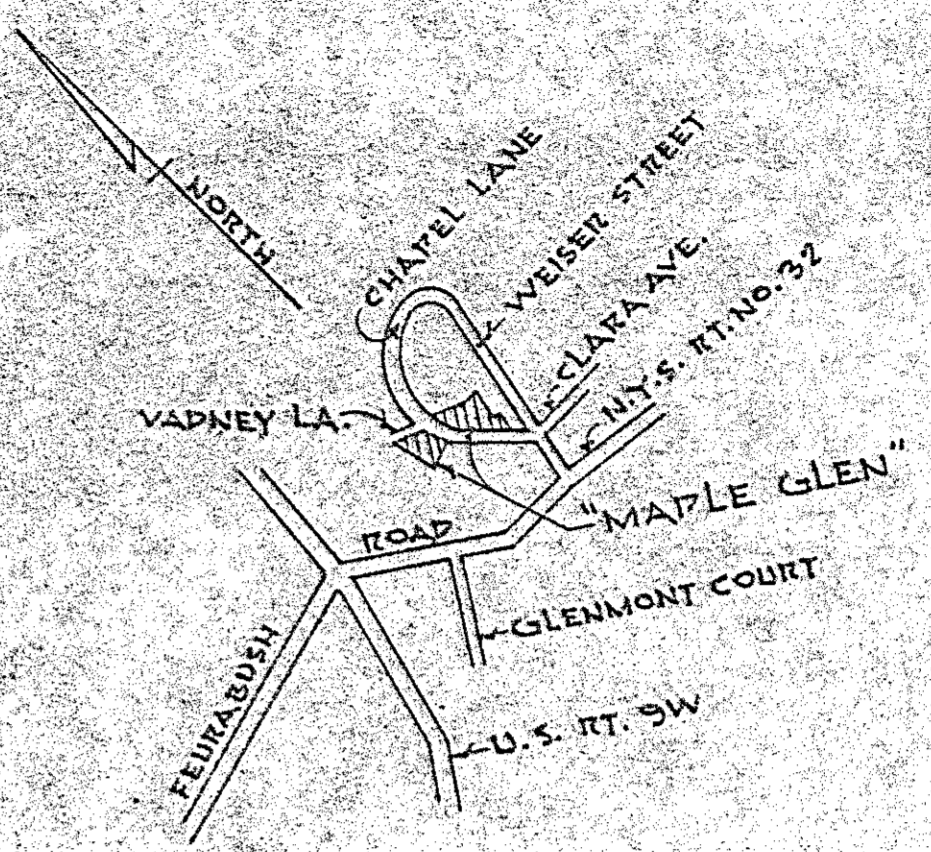
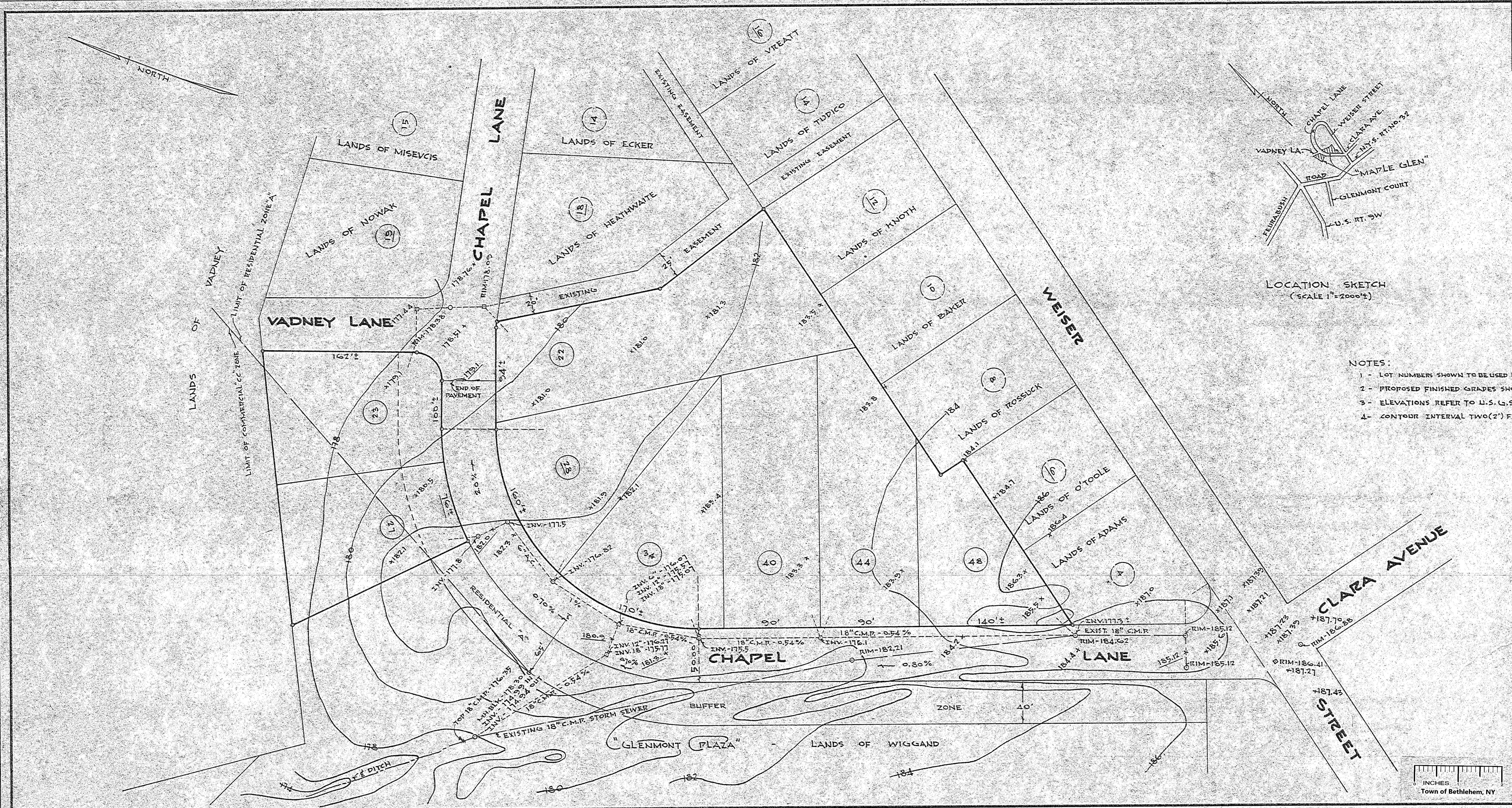


| REVISIONS | | |
|-----------|------|-------------|
| NO. | DATE | DESCRIPTION |
| | | |
| | | |
| | | |



LOCATION SKETCH
(SCALE 1" = 2000')

- NOTES:
- 1 - LOT NUMBERS SHOWN TO BE USED HOUSE NUMBERS.
 - 2 - PROPOSED FINISHED GRADES SHOWN THUS: 185.12
 - 3 - ELEVATIONS REFER TO U.S. G.S. DATUM.
 - 4 - CONTOUR INTERVAL TWO(2') FT.

PLANNING BOARD
TOWN OF BETHLEHEM
ALBANY COUNTY, NEW YORK

This plat APPROVED subject to such conditions as are stated in Planning Board Certificate of Approval No. 97, dated April 9, 1968.

Howard P. Pallock
Title Chairman

Date April 26, 1968

PRELIMINARY PLAN
"MAPLE GLEN"
PROPERTY OF
ROBERT J. & DONALD C.
WIGGAND

| | |
|--|---------------------|
| TOWN: BETHLEHEM | COUNTY: ALBANY |
| STATE: NEW YORK | DATE: MAR. 26, 1968 |
| SCALE: 1" = 20' | REVISION NO: |
| Map Prepared by EDWARD W. BOUTELLE & SON Civil Engineers & Surveyors Delmar, New York | |
| SHEET FILE 1 OF 1 NO: | 1-2-P611-15-1 |

