

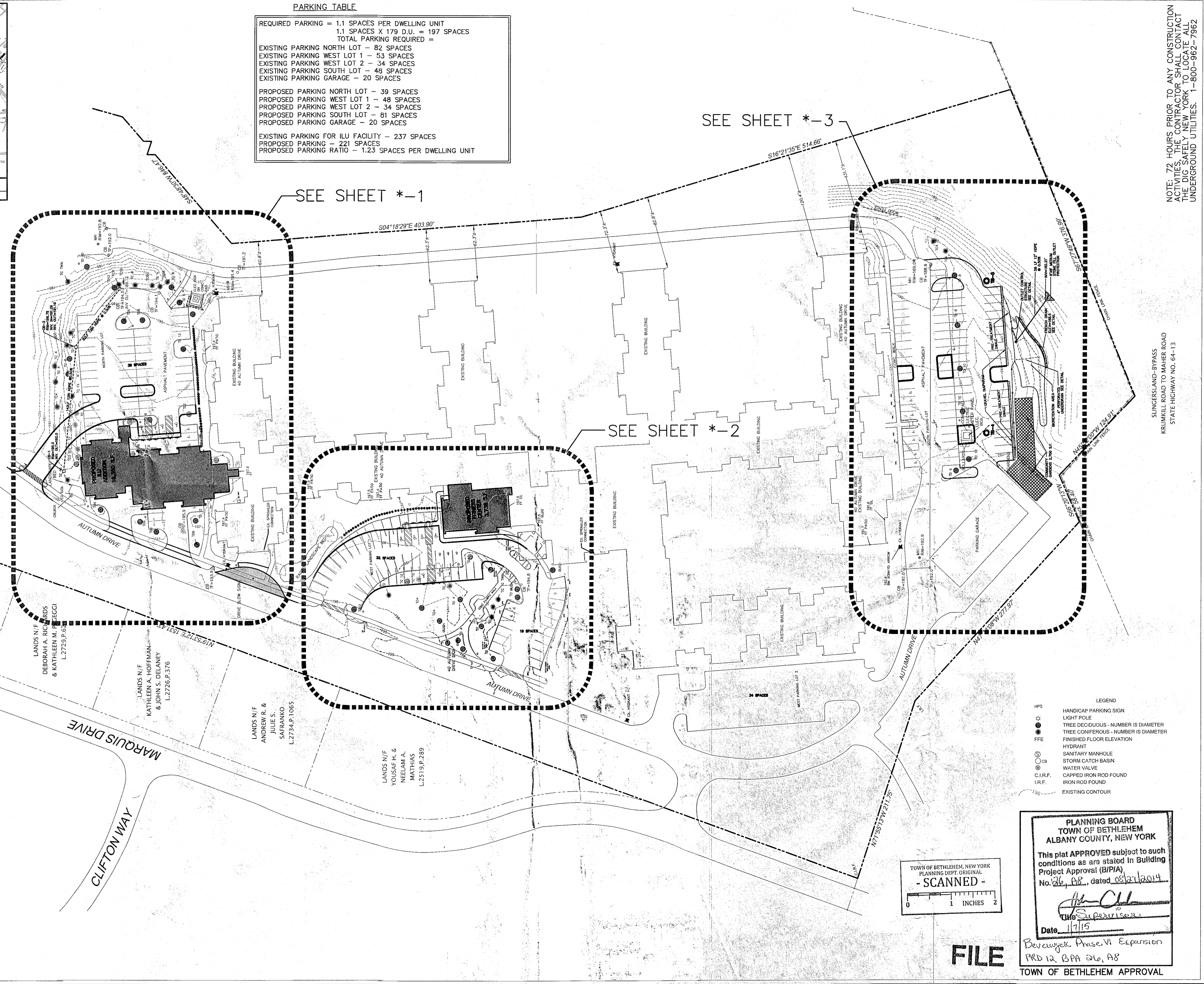
**PARKING TABLE**

REQUIRED PARKING = 1.1 SPACES PER DWELLING UNIT  
 1.1 SPACES X 179 D.U. = 197 SPACES  
 TOTAL PARKING REQUIRED =

EXISTING PARKING NORTH LOT - 82 SPACES  
 EXISTING PARKING WEST LOT 1 - 53 SPACES  
 EXISTING PARKING WEST LOT 2 - 34 SPACES  
 EXISTING PARKING SOUTH LOT - 48 SPACES  
 EXISTING PARKING GARAGE - 20 SPACES

PROPOSED PARKING NORTH LOT - 39 SPACES  
 PROPOSED PARKING WEST LOT 1 - 48 SPACES  
 PROPOSED PARKING WEST LOT 2 - 34 SPACES  
 PROPOSED PARKING SOUTH LOT - 81 SPACES  
 PROPOSED PARKING GARAGE - 20 SPACES

EXISTING PARKING FOR ILU FACILITY - 237 SPACES  
 PROPOSED PARKING - 221 SPACES  
 PROPOSED PARKING RATIO - 1.23 SPACES PER DWELLING UNIT



NOTE: 72 HOURS PRIOR TO ANY CONSTRUCTION ACTIVITIES, THE CONTRACTOR SHALL CONTACT THE DIG SAFELY NEW YORK TO LOCATE ALL UNDERGROUND UTILITIES. 1-800-962-7962

NO.	DATE	REVISIONS
2	05-14-14	REVISED AS PER TOWN ENGINEERING COMMENTS
1	04-14-14	REVISED AS PER TOWN AND THE CONSULTANTS

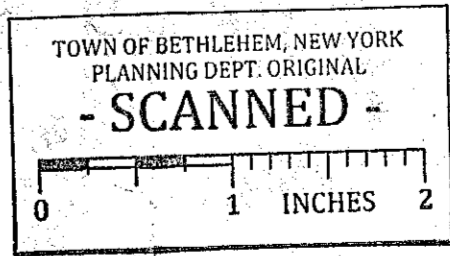
Scale: 1" = 50'  
 1" = 50'  
 1" = 50'

UNAUTHORIZED ALTERATIONS OR ADDITIONS TO THIS DOCUMENT IS A VIOLATION OF Sec. 7209, Sub. 2 of the NYS Education Law.  
 Copyright 2014, Brett L. Steenburgh, P.E. PLLC  
 All rights reserved. No use or reproduction of this document is permitted without the express written consent of Brett L. Steenburgh, P.E. PLLC

**BRETT L. STEENBURGH, P.E. PLLC**  
 2832 ROSENDALE ROAD  
 NISKAYUNA, NY 12309  
 PHONE (518) 365-0876  
 FAX (518) 365-0877  
 bsteenb@blycap.it.com

CIVIL ENVIRONMENTAL STRUCTURAL ENGINEERING

- LEGEND**
- HPS HANDICAP PARKING SIGN
  - LIGHT POLE
  - TREE DECIDUOUS - NUMBER IS DIAMETER
  - TREE CONIFEROUS - NUMBER IS DIAMETER
  - FFE FINISHED FLOOR ELEVATION
  - HYDRANT
  - SANITARY MANHOLE
  - CB STORM CATCH BASIN
  - WATER VALVE
  - C.I.R.F. CAPPED IRON ROD FOUND
  - I.R.F. IRON ROD FOUND
  - EXISTING CONTOUR



PLANNING BOARD  
 TOWN OF BETHLEHEM  
 ALBANY COUNTY, NEW YORK

This plat APPROVED subject to such conditions as are stated in Building Project Approval (BPIA) No. 26, A8, dated 08/27/2014

*[Signature]*  
 The Supervisor

Date: 1/7/15

Beverwyck Phase VI Expansion  
 PRD 12, BPA 26, A8

TOWN OF BETHLEHEM APPROVAL

**FILE**

OVERALL PLAN  
 BEVERWYCK ILU ADDITION  
 TOWN OF BETHLEHEM  
 COUNTY OF ALBANY  
 DRAWN BY: BLS  
 CADD FILE: DF-RECOVER  
 DATE: MAY 12, 2014

STATE OF NEW YORK  
 SCALE: 1" = 50'  
 SHEET 1 OF 18

PRD 12, BPA 26, A8 08/27/2014 Phase VI Expansion