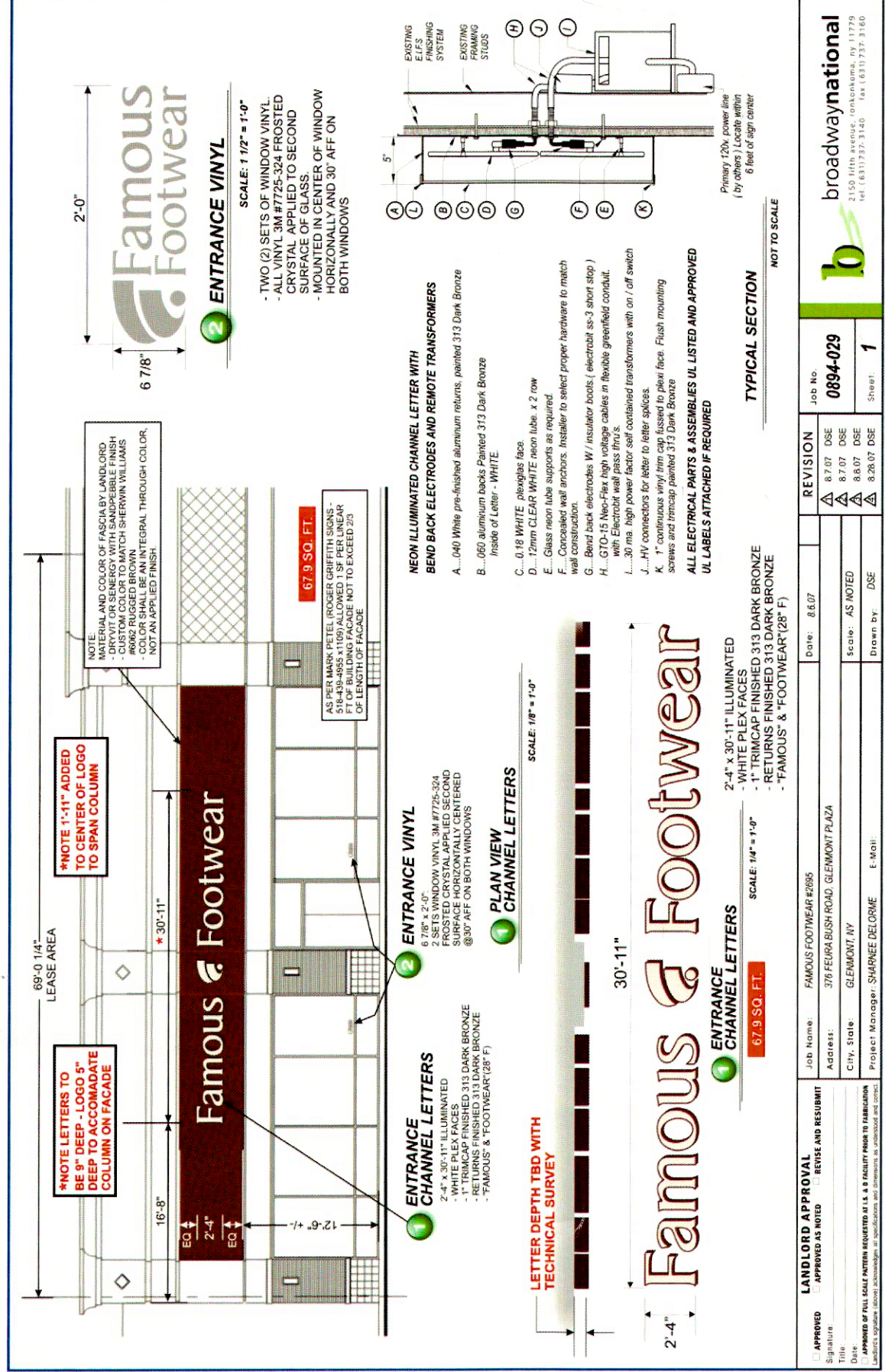
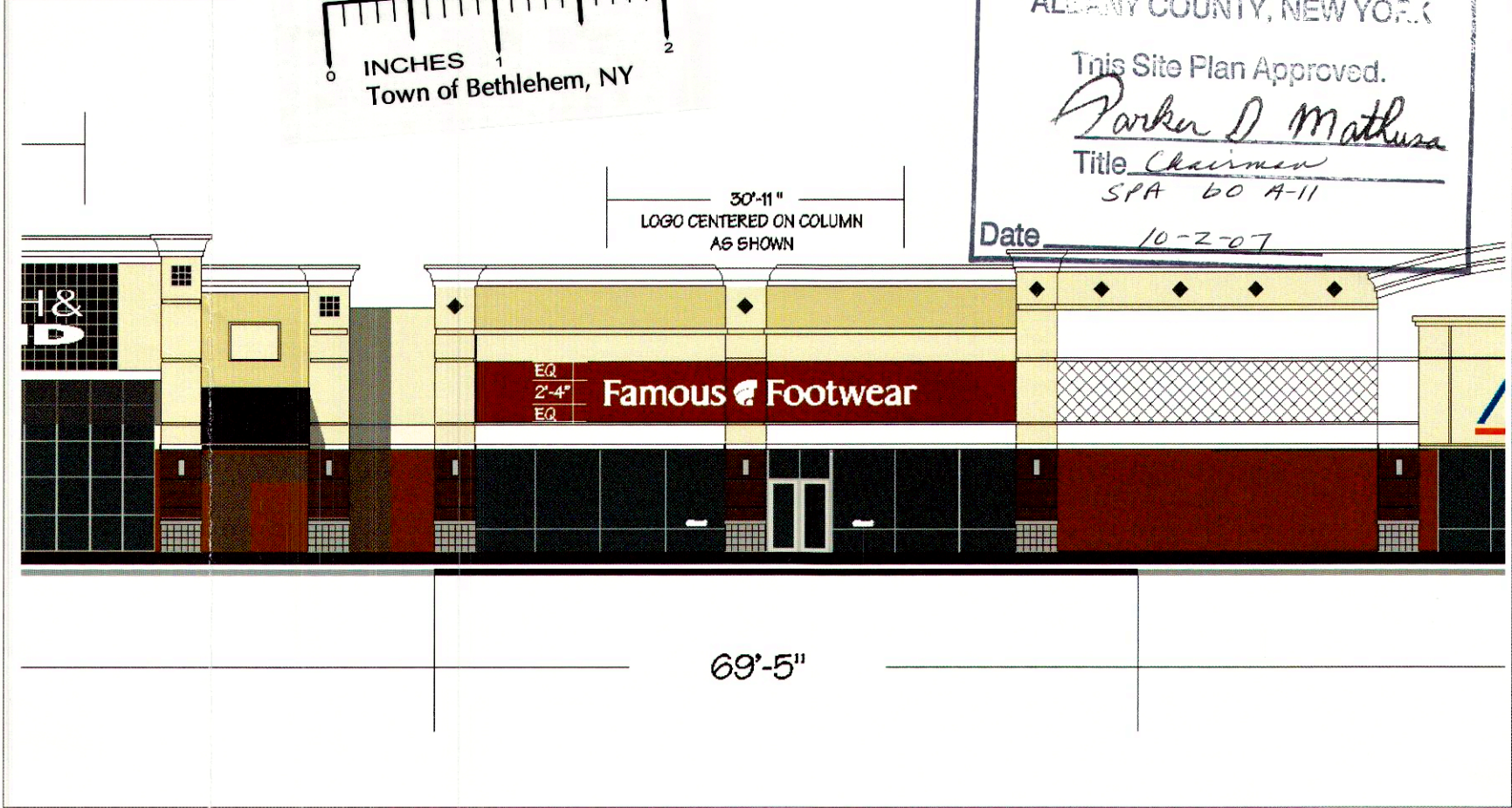


SIGN SHOP DRAWING



BDCL DRAWING



PHOTO/EXISTING



PHOTO FUTURE FAMOUS FOOTWEAR

**EXTERIOR STOREFRONT SIGNAGE**

☐ APPROVED    ☒ APPROVED AS NOTED    ☐ NOT APPROVED

1. NO EXPOSED MOUNTING HARDWARE, BRACKETS, BRACING, OR ELECTRICAL CONDUIT PERMITTED.
2. INSTALL AS PER BDCLLC ELEVATION DRAWING.
3. UL LABELS VISIBLE.
4. WINDOW VINYL GRAPHICS APPROVED AS SUBMITTED.

**RECEIVED**  
SEP 27 2007  
PLANNING BOARD  
TOWN OF BETHLEHEM

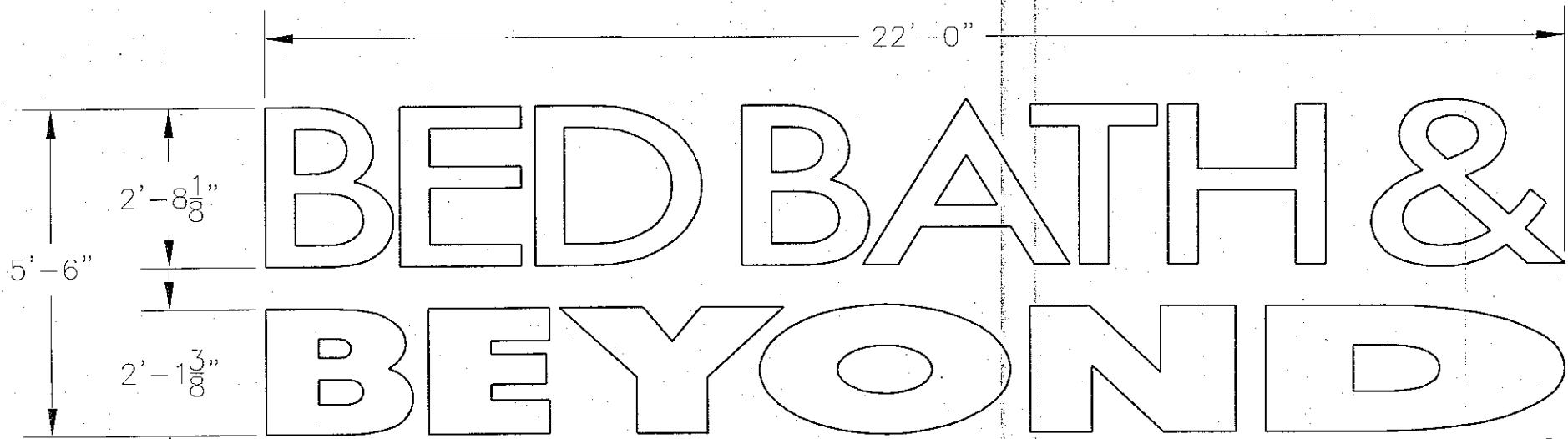
**BENDERSON DEVELOPMENT**  
570 DELAWARE AVENUE, BUFFALO, NEW YORK, 14202

PROPERTY GLENMONT PLAZA  
GLENMONT, NEW YORK  
PROP. # 4005    DRWG. #4005-004A FAMOUS FOOTWEAR  
DATE 8.14.07    BY D.MAVIS  
REVISION 9.6.07

SPA 60 A-11

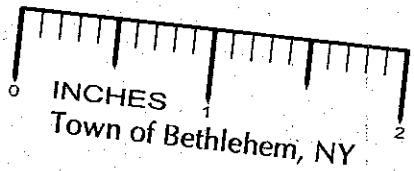


ECR	REV	REVISIONS	DATE	BY
-	A	GENERAL UPDATES FOR APPROVAL	05/25/06	C. Usry



PLANNING BOARD  
TOWN OF BETHLEHEM  
ALBANY COUNTY, NEW YORK  
  
This Site Plan Approved.  
  
*Barbara M. Mather*  
Title Chairman  
SPA 60 A-11  
Date 10-2-07 12/18/07

ELEVATION



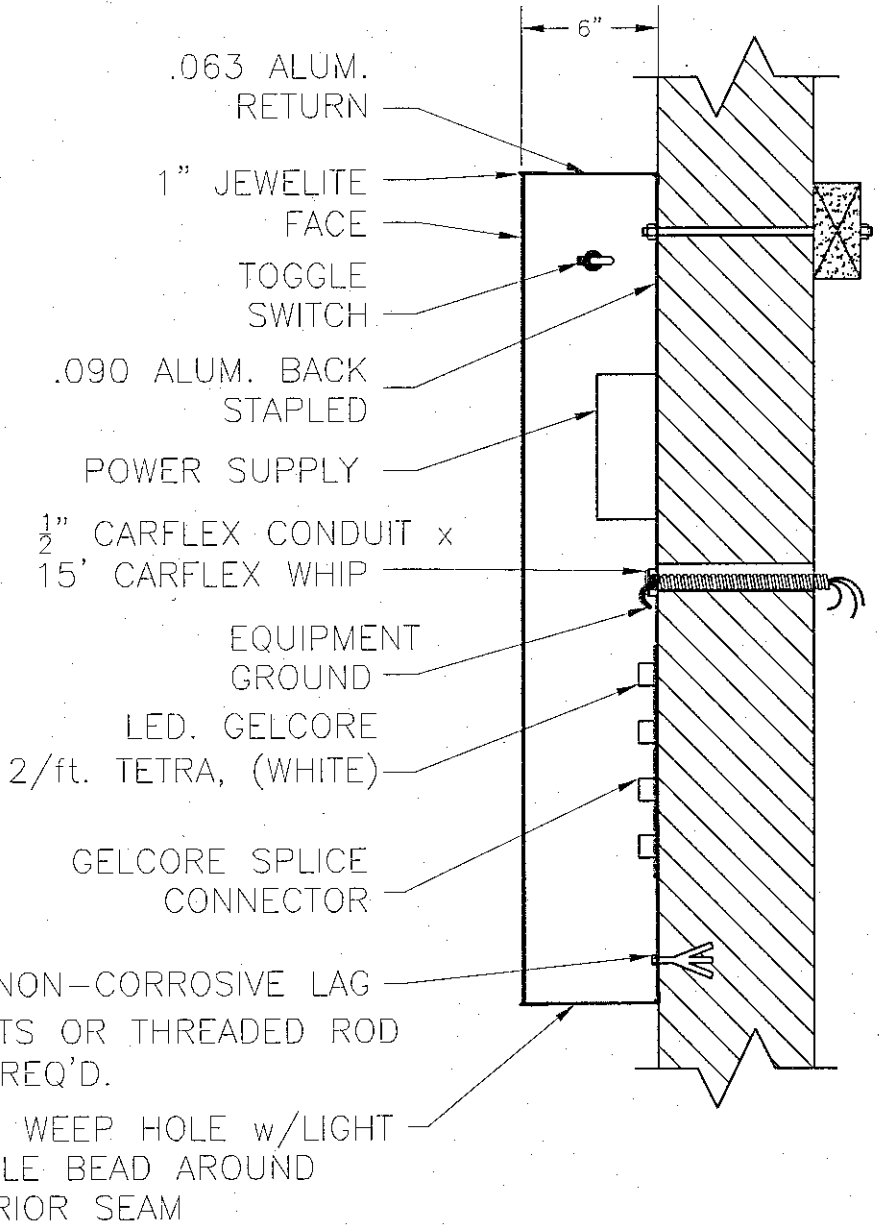
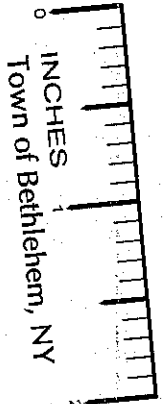
ELECTRICAL NOTE - Actual # of circuits to be determined by a Licensed Electrical Contractor.  
TOTAL AMPS- 15.00A  
# OF CKTS- 1 20 AMP(RECOMMENDED)  
VOLTS- 120  
ALL SIGNAGE WILL BE (U.L.) LISTED, (U.L.) 2161 COMPLIANT AND CARRY (U.L) LABELS.



\*NOTE:  
INSTALL TOGGLE SWITCH TO OPERATE (ON/OFF) IN THE HORIZONTAL POSITION.

1 SWITCH PER LETTER

IF NON-STANDARD PRODUCT CHECK APPROPRIATE BOX BELOW	
<input type="checkbox"/> - RED FACE	
<input type="checkbox"/> - BLACK RETURNS	
<input type="checkbox"/> - DARK BRONZE RETURNS	



CROSS SECTION MOUNTING DETAIL  
SCALE: NTS

RECEIVED  
DEC 12 2007

COLOR NOTES:  
RETURN: 6"x.063 WHITE  
TRIM: TO MATCH RETURN  
LTRS UNDER 42" USE 1" WHITE JEWELITE  
LTRS 42" AND ABOVE USE L MOLD PAINTED WHITE  
FACE: 2447 WHITE SG 410 LEXAN  
LED: WHITE GELCORE TYPE-GEWHPTS2  
INSIDE OF CAN TO BE PAINTED SEMI GLOSS WHITE

GENERAL NOTE:  
MINIMUM #8 SHEET METAL SCREWS ARE TO BE USED FOR SECURING THE FACE TO THE LETTER RETURN.  
THE MAXIMUM SPACING SHALL NOT EXCEED 18" AND NO FEWER THAN FOUR SCREWS ARE TO BE USED PER FACE.

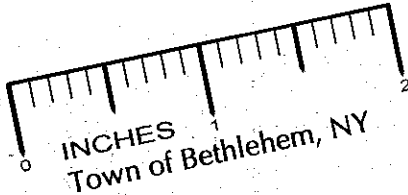
NOTES:		PLANNING BOARD TOWN OF BETHLEHEM		ITEM NUMBER <b>BED65701</b>
<b>CUMMINGS SIGNS.</b> 4255 NAPER FIELD RD DOTHAN, AL 36503 PHONE: (334) 983-6000 FAX: (334) 983-1379		<b>BED BATH &amp; BEYOND</b>		
DRAWING APPROVED BY		CODE	PAGE LAYOUT <b>PRESENTATION</b>	
PROGRAM APPROVED BY		ITEM DESCRIPTION 5'-6" X 22'-0" STACKED LAYOUT (WHITE) SELF CONTAINED CHANNEL LETTERS (Gelcore LED)		
PROTOTYPE	BY	SCALE	ENGINEER	ACCOUNT REPRESENTATIVE <b>PENNY S.</b>
05-25-06	BY	1:32	J WELLS	
1st RUN	BY	SHEET 1 OF 2	BOXED SQ FT 121	
RELEASED FOR	BY	WIND LOAD (MPH)	EST WEIGHT (LBS)	ITEM NUMBER <b>BED65701</b>
PRODUCTION	BY	N/A	N/A	REV <b>A</b>

THE INFORMATION CONTAINED ON THIS DRAWING IS THE SOLE PROPERTY OF CUMMINGS SIGNS. ANY REPRODUCTION IN PART OR WHOLE WITHOUT THE WRITTEN PERMISSION OF CUMMINGS SIGNS IS PROHIBITED.

# BED BATH & BEYOND

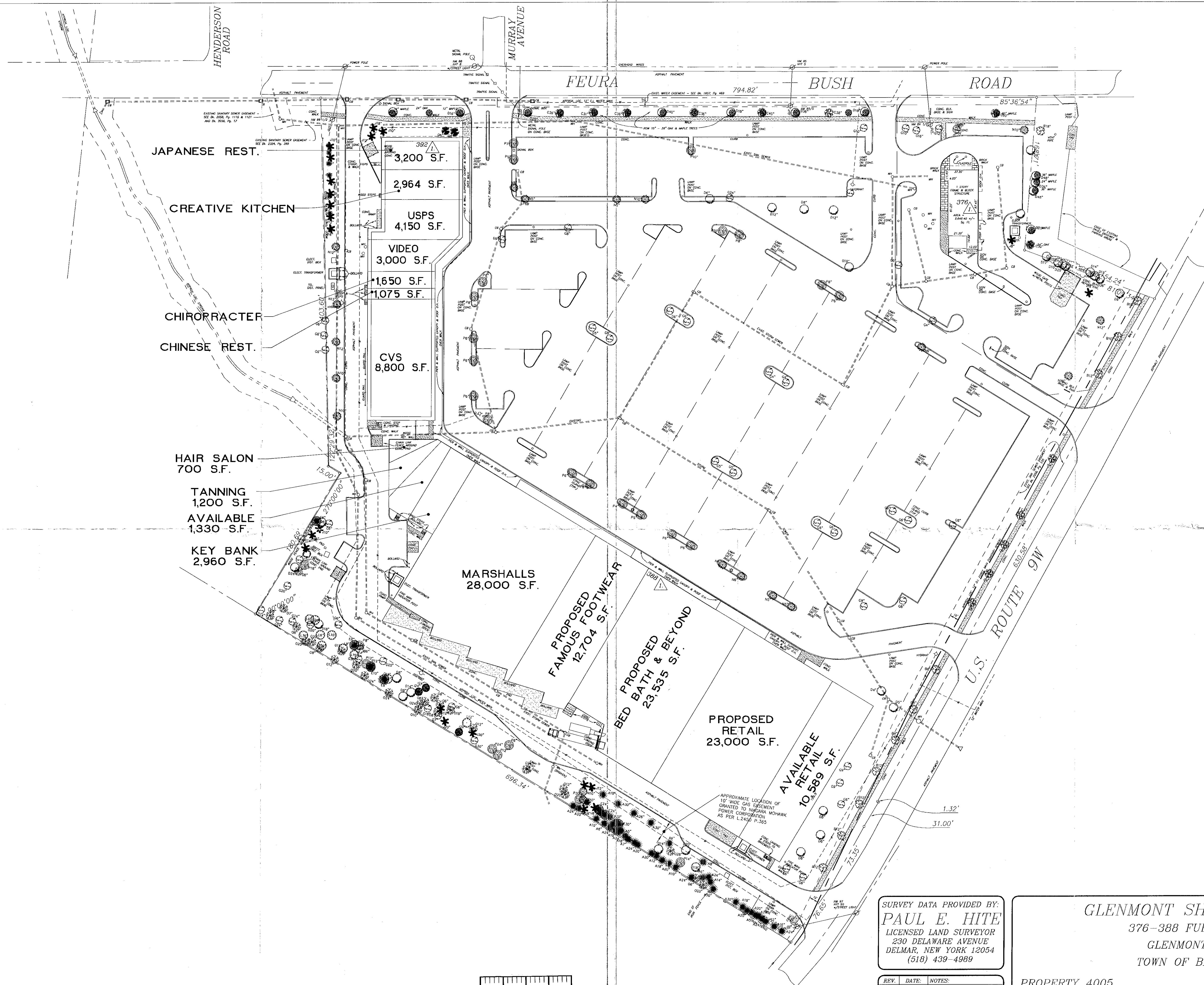
## GELCORE LED LAYOUT

MATERIALS									
POWER WHITE	GEWHPTS2		GECLPS5	GECLPS6	GECLSC2	GECLSW1	GECLC1	N/A	N/A
WHITE	2/FT		SELF-CONTAINED POWER SUPPLIES		SPLICE CONNCTR	SUPPLY WIRE	END CAP	LT. GUIDE CONNCTR	LIGHT GUIDE
66"	Ft	In	Bank #	Bank #	Qty	Ft	Qty	Qty	Ft
B	6	0		#1B1	3	8	6		
	7	0		#2B1	3	8	6		
E	5	0		#3B1	3	8	6		
	5	0		#4B1	3	8	6		
D	6	0		#5B1	2	8	4		
	7	0		#6B1	3	8	6		
B	6	0		#7B1	3	8	6		
	7	0		#8B1	3	8	6		
A	7	0		#9B1	3	8	6		
	6	0		#10B1	3	8	6		
T	7	0		#11B1	3	8	6		
	7	0		#12B1	3	8	6		
H	7	0		#13B1	3	8	6		
	7	0		#14B1	3	8	6		
&	5	0		#15B1	3	8	6		
	6	0		#16B1	3	8	6		
B	7	0		#17B1	3	8	6		
	7	0		#18B1	2	8	4		
E	6	0		#19B1	2	8	4		
	6	0		#20B1	2	8	4		
Y	6	0		#21B1	2	8	4		
	7	0	#22B1		2	8	4		
O	6	0	#22B2		2	8	4		
	6	0	#22B3		2	8	4		
N	7	0	#23B1		2	8	4		
	6	0	#23B2		2	8	4		
D	6	0	#23B3		2	8	4		
	7	0	#24B1		2	8	4		
	6	0	#24B2		2	8	4		
	6	0	#24B3		2	8	4		
	6	0	#24B4		2	8	4		
	6	0							
	6	0							
TOTAL	196 ft	0 in	3	21	78	248	156	0	0
TECHNICAL SUPPORT			Drawn By: G THRUISH		GELcore, LLC		VALLEY VIEW, OH 44125		
216-606-6693			Date: 1/24/06				216-606-6555		
WWW.GELCORE.COM			Rev: 00		Tetra™ LED Systems		PAGE 2 OF 2		



NOTES:				
 4255 NAPIER FIELD RD DOTHAN, AL 36303 PHONE: (334) 983-8000 FAX: (334) 983-1379	CUSTOMER <b>BED BATH &amp; BEYOND</b>			ITEM NUMBER <b>BED65702</b>
	CODE	PAGE LAYOUT <b>PRESENTATION</b>		
	ITEM DESCRIPTION 5'-6" X 22'-0" STACKED LAYOUT (WHITE) SELF CONTAINED CHANNEL LETTERS (Gelcore LED)			
	DRAWING APPROVED BY			
PROGRAM APPROVED BY		LOCATION VARIOUS	DRAWN BY Cindy Usry	
RELEASED FOR PROTOTYPE 05-25-06 1st RUN PRODUCTION	BY	SCALE 1:32	ENGINEER J. WELLS	ACCOUNT REPRESENTATIVE PENNY S.
	BY	SHEET 2 OF 2	BOXED SQ FT 121	ITEM NUMBER <b>BED65702</b>
	BY	WIND LOAD (MPH) N/A	EST WEIGHT (LBS)	REV <b>A</b>





PLANNING BOARD  
TOWN OF BETHLEHEM  
ALBANY COUNTY, NEW YORK  
This Site Plan Approved.  
*John A. Mathew*  
Title *Chairman*  
SPA 60 A-11  
Date *10-2-07* *12/15/07*

RECEIVED  
DEC 12 2007  
PLANNING BOARD  
TOWN OF BETHLEHEM

SURVEY DATA PROVIDED BY:  
**PAUL E. HITE**  
LICENSED LAND SURVEYOR  
230 DELAWARE AVENUE  
DELMAR, NEW YORK 12054  
(518) 439-4989

**GLENMONT SHOPPING PLAZA**  
376-388 FUERA BUSH ROAD  
GLENMONT, NEW YORK  
TOWN OF BETHLEHEM, NY

PROPERTY 4005 AUG. 6, 2007

**BENDERSON  
DEVELOPMENT  
COMPANY, LLC**  
570 Delaware Ave. Buffalo, N.Y. 14202  
(716) 886-0211

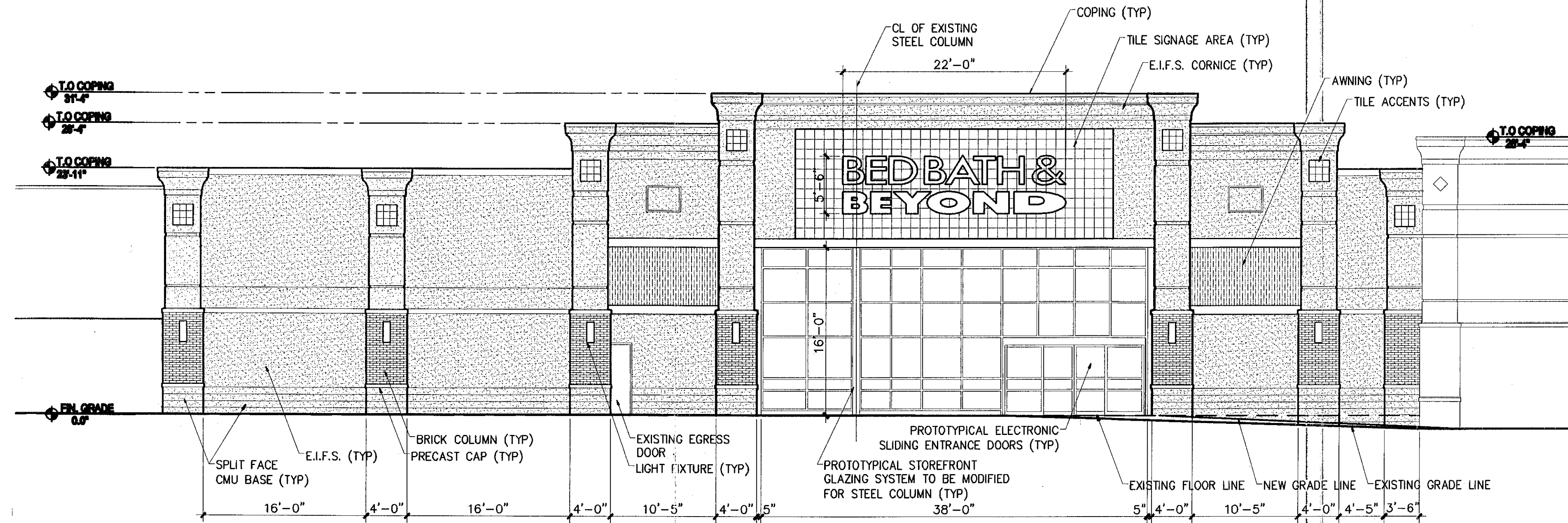
**SITE PLAN**  
0 50 100 150  
1" = 50.00'

REV.	DATE	NOTES
1	9/25/07	PER TOWN COMMENTS

INCHES  
Town of Bethlehem, NY

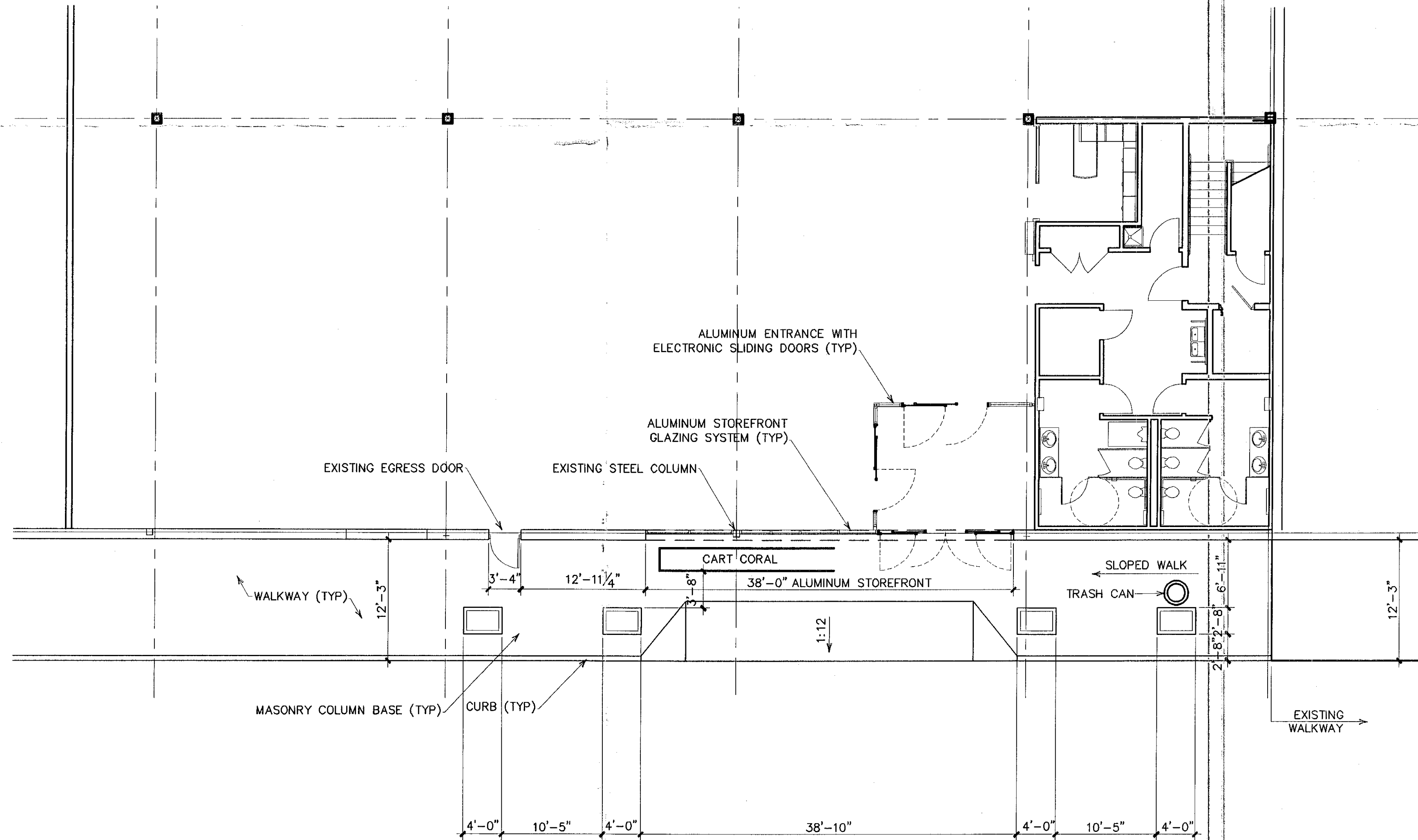
SPA 60-A-11





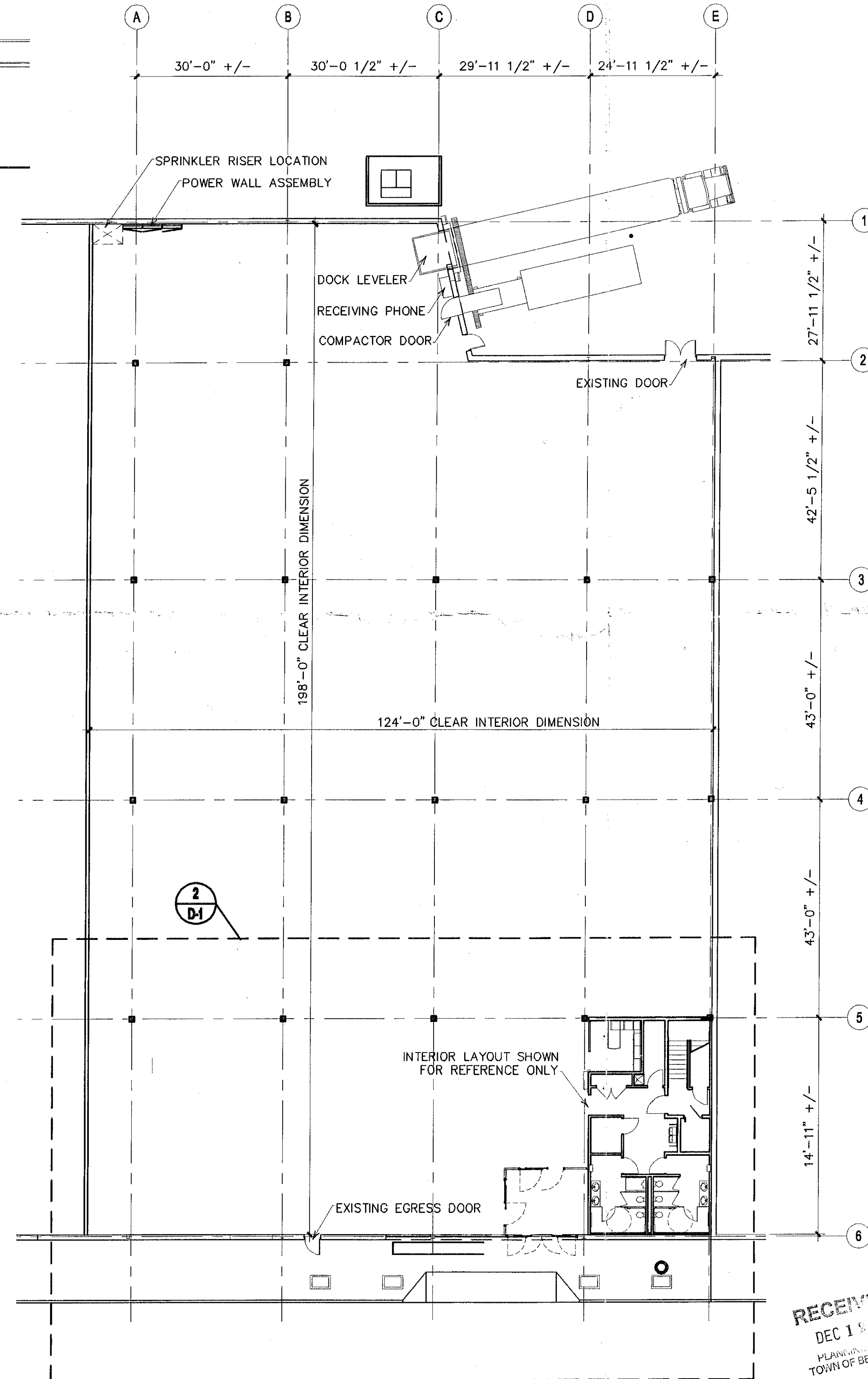
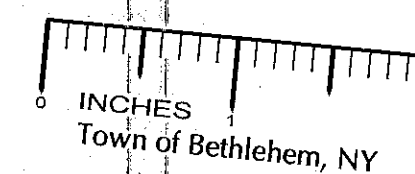
**PROPOSED FRONT ELEVATION**  
SCALE: 1/8" = 1'-0"

3



**ENLARGED ENTRY PLAN**  
SCALE: 1/8" = 1'-0"

2



**PROPOSED FLOOR PLAN**  
SCALE: 1/16" = 1'-0"

1

No.	Description	Date
1		
2		
3		
4		
5		
6		
7		
8		
9		
10		

**BED BATH & BEYOND & FASCADE REHAB**  
GLENMONT, NY  
BERNARDSON DEVELOPMENT CO, INC  
570 DELAWARE AVE, BUFFALO NY 14202  
**PROPOSED FLOOR PLAN & ELEVATION**

PLANNING BOARD  
TOWN OF BETHLEHEM  
ALBANY COUNTY, NEW YORK  
This Site Plan Approved.  
*Paula M. Matus*  
Title: *Chairman*  
Date: *10-2-07* *12/15/07*

**LAUER-MANGUSO & ASSOCIATES ARCHITECTS**  
4080 Ridge Lea Road  
Buffalo, N.Y. 14228  
(716) 837-0833

Date: **8-10-07** Drawing No.: **D-1**  
Drawn By: **DP**  
Checked By: **PM**  
Job Number: **07134A**