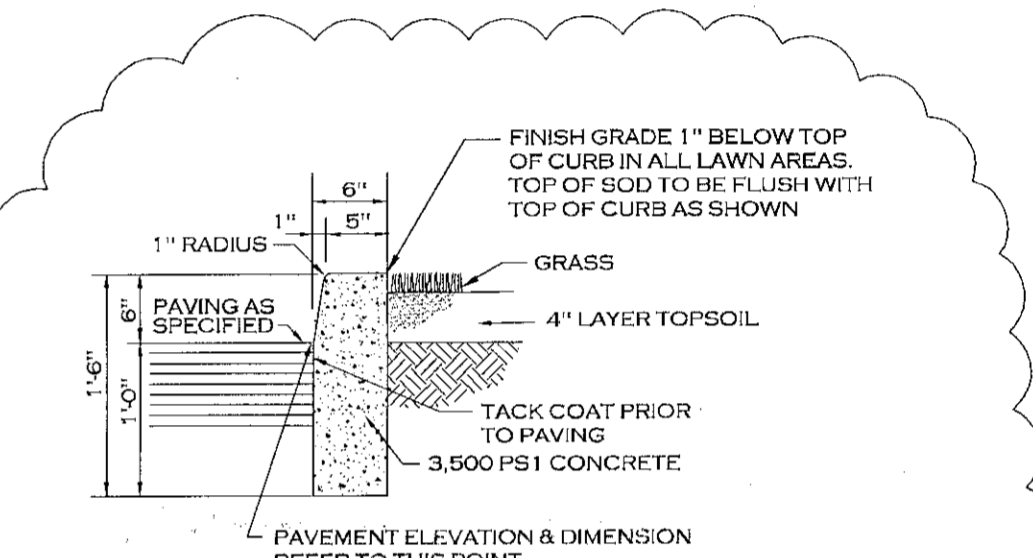
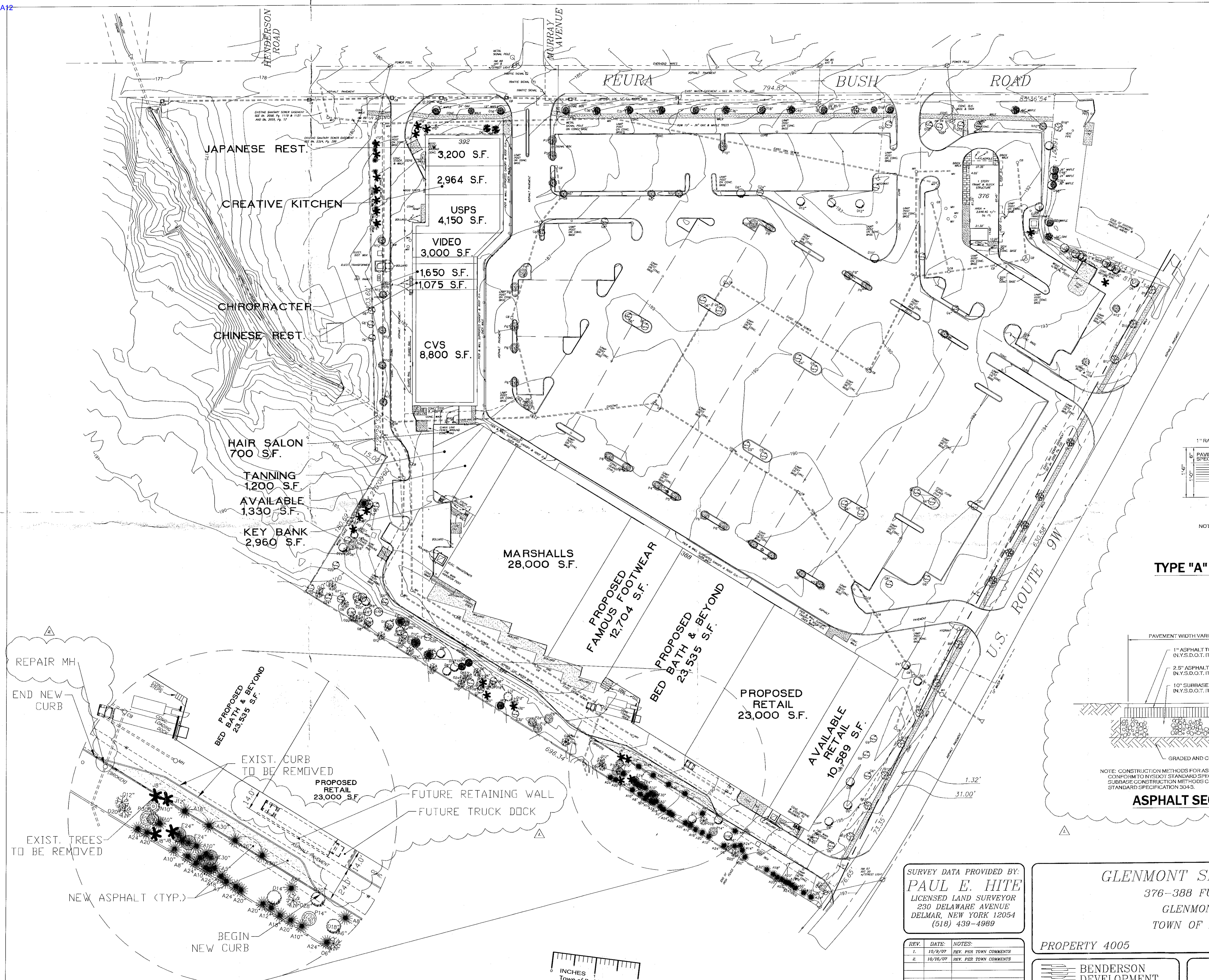


PLANNING BOARD
TOWN OF BETHLEHEM
ALBANY COUNTY, NEW YORK

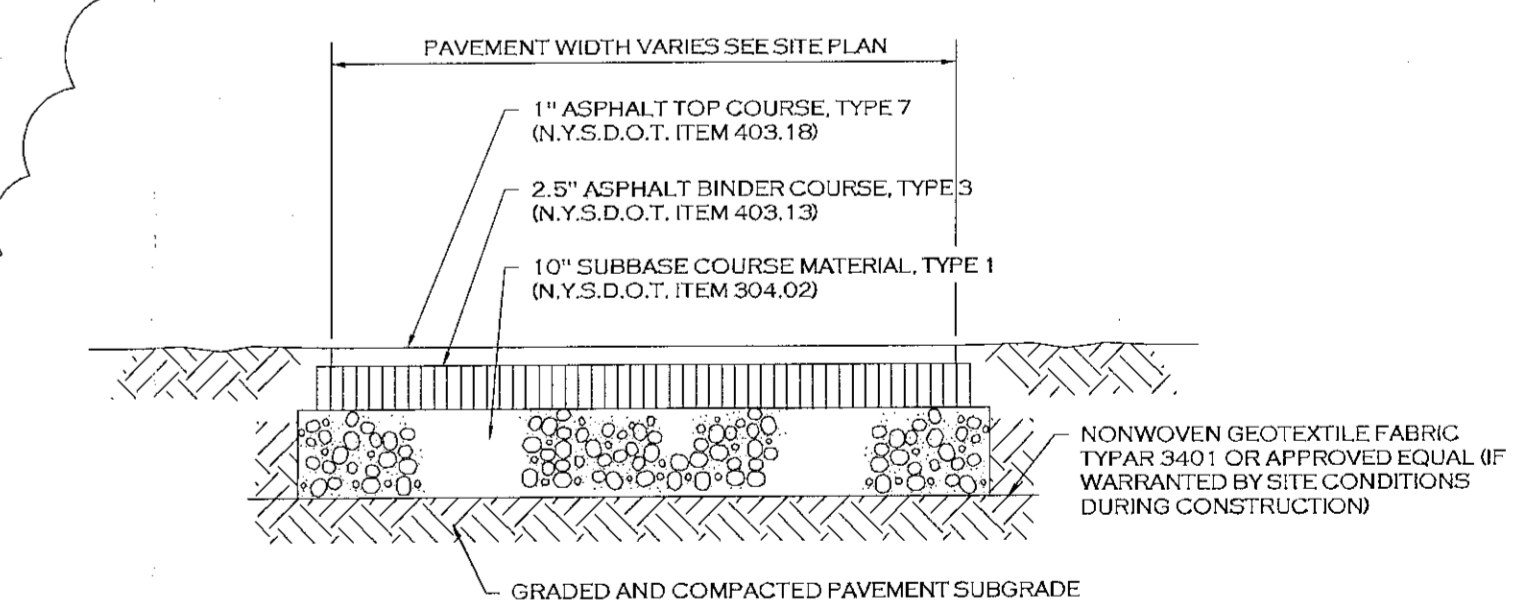
This Site Plan Approved.

Paul E. Hite
Title: *Paul E. Hite*
SPA 60-A-12
Date: *10-16-07* (10/16/07)



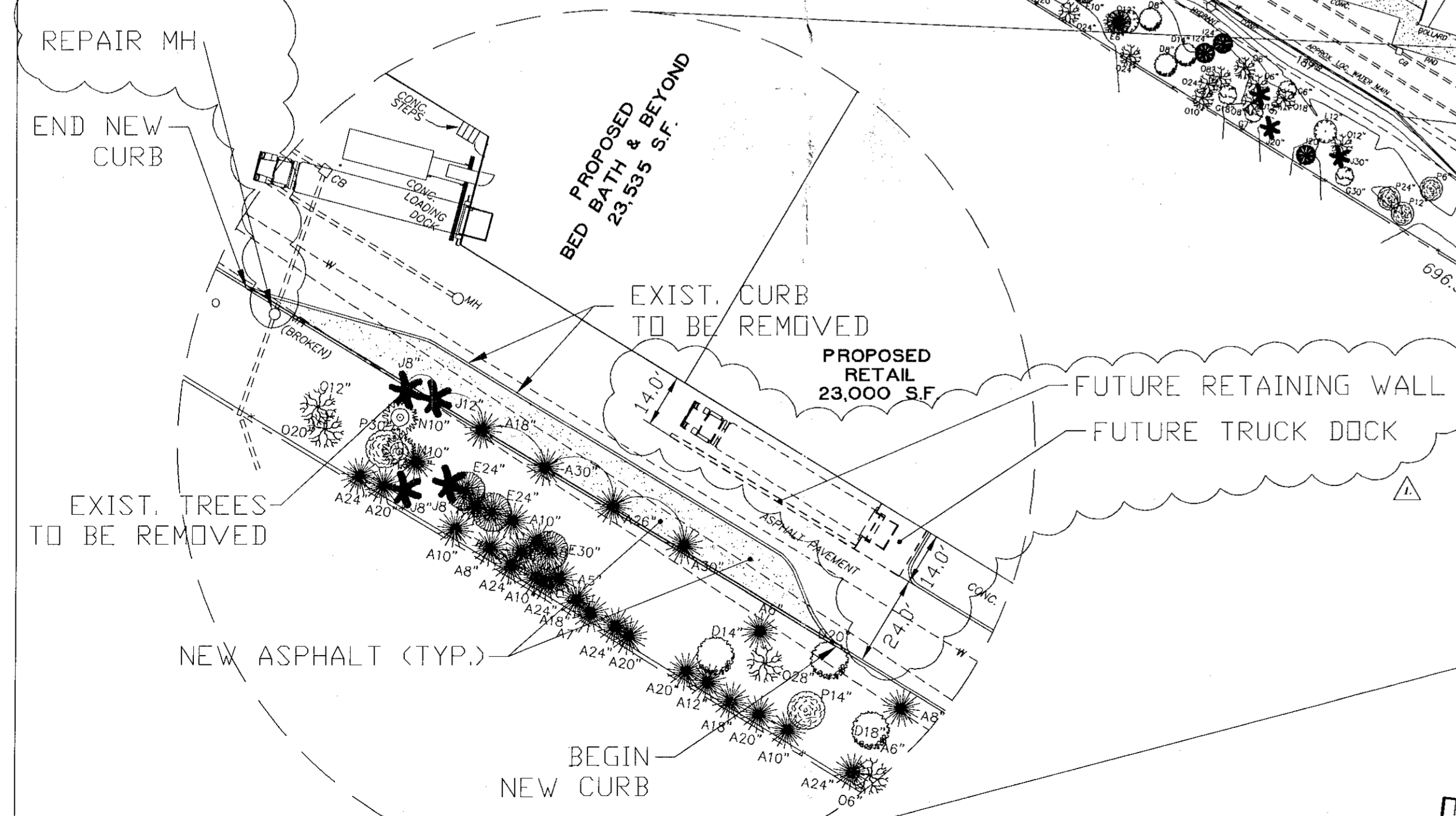
NOTE: CONTROL JOINTS TO BE 2" DEEP AT 15'-0" O.C. BOTH-WAYS - SEE SPECIFICATIONS FOR FURTHER JOINT REQUIREMENTS NYS DOT 7020700

TYPE "A" CONCRETE CURB - 1



ASPHALT SECTION - 4A

NOTE: CONSTRUCTION METHODS FOR ASPHALT PAVEMENT SHALL CONFORM TO NYS DOT STANDARD SPECIFICATION 401-3, WITH SUBBASE CONSTRUCTION METHODS CONFORMING TO NYS DOT STANDARD SPECIFICATION 304-3.



ENLARGED PLAN
SCALE: 1"=30'

SURVEY DATA PROVIDED BY:
PAUL E. HITE
LICENSED LAND SURVEYOR
230 DELAWARE AVENUE
DELMAR, NEW YORK 12054
(518) 439-4989

REV.	DATE	NOTES
1.	10/9/07	REV. PER TOWN COMMENTS
2.	10/16/07	REV. PER TOWN COMMENTS

GLENMONT SHOPPING PLAZA
376-388 FUERA BUSH ROAD
GLENMONT, NEW YORK
TOWN OF BETHLEHEM, NY

PROPERTY 4005

BENDERSON DEVELOPMENT COMPANY, LLC
670 Delaware Ave. Buffalo, N.Y. 14202
(716) 888-0211

SITE PLAN C-1

0 50 100 150
1" = 50.00'

RECEIVED
DEC 13 2007
PLANNING BOARD
TOWN OF BETHLEHEM
SEPT. 26, 2007