

ERDMAN
ANTHONY



11 CENTURY HILL DRIVE, SUITE 105
Latham, NY 12110
Telephone (518)783-1205
Facsimile (518)783-0374
www.erdmananthony.com



DATE _____ DATE _____

NOTE: UNAUTHORIZED ALTERATION OR ADDITION TO THIS
DRAWING IS A VIOLATION OF THE NEW YORK STATE
EDUCATION LAW ARTICLE 145, SECTION 7209.

REVISIONS

NO.	DESCRIPTION	BY	DATE
1	ADDED BIKE RACK DETAIL	RLD	5/13/13
2	ADDED DIRECTIONAL SIGN	RLD	7/19/13

ALL RIGHTS RESERVED: No part of this document may be
reproduced, stored in a retrieval system, or transmitted, in
any form or by any means electronic, mechanical, photocopying,
recording, or otherwise without the prior written authorization of
ERDMAN ANTHONY.

COPYRIGHT
©2013 Erdman Anthony

CLIENT:

BENDERSON
DEVELOPMENT
COMPANY, LLC

PROJECT NAME:

GLENMONT PLAZA -
380 FEURA BUSH
ROAD PROPOSED
PAD SITE

DRAWING TITLE:

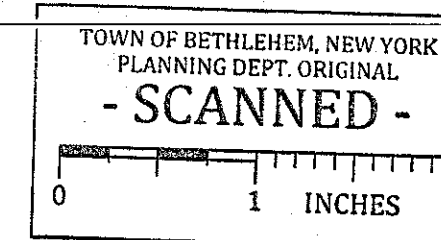
SITE DETAILS

SCALE: NTS DATE: FEB. 2013

DES. BY: RLD DR. BY: MFJ

CK'D BY: RLD EA PROJECT NO. 1700C.55

SHEET NO. 7 OF 13 DRAWING NO. C4.2

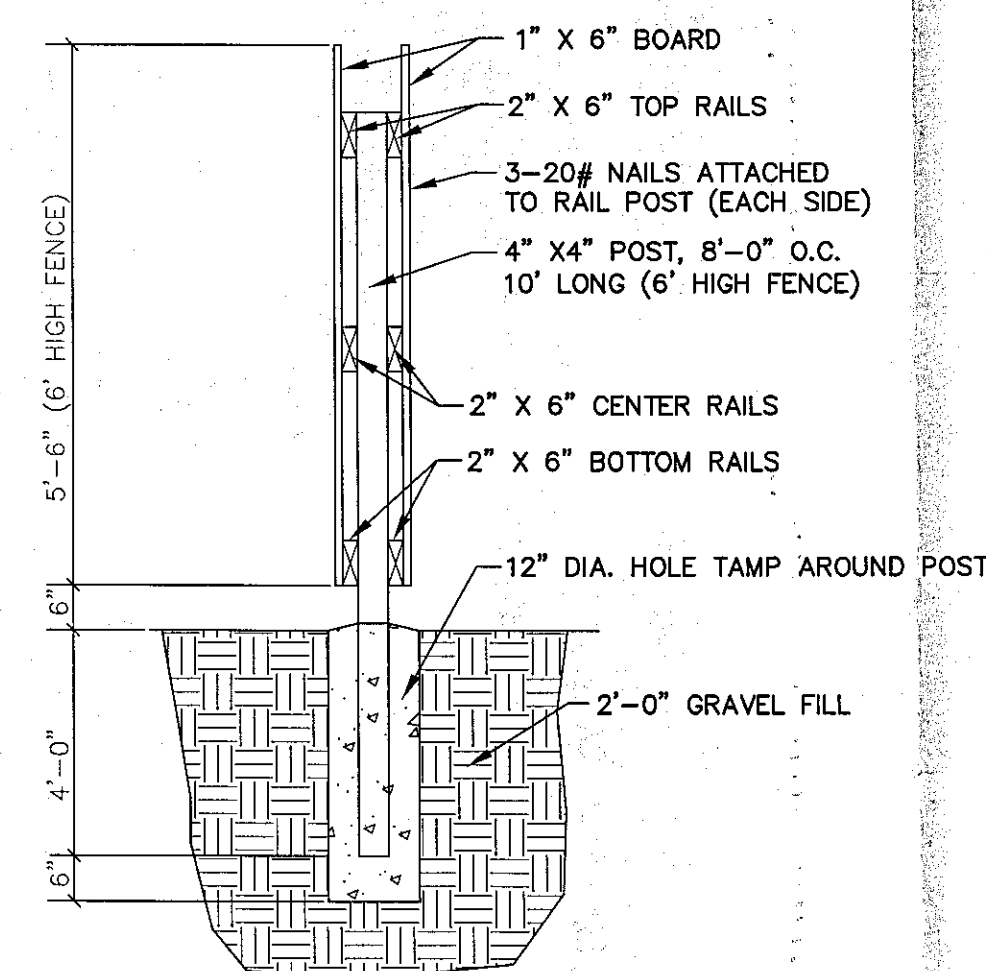


Town of Bethlehem Planning Board
By direction of the Chairman
these plans are hereby Approved.
See first sheet for date & signature.

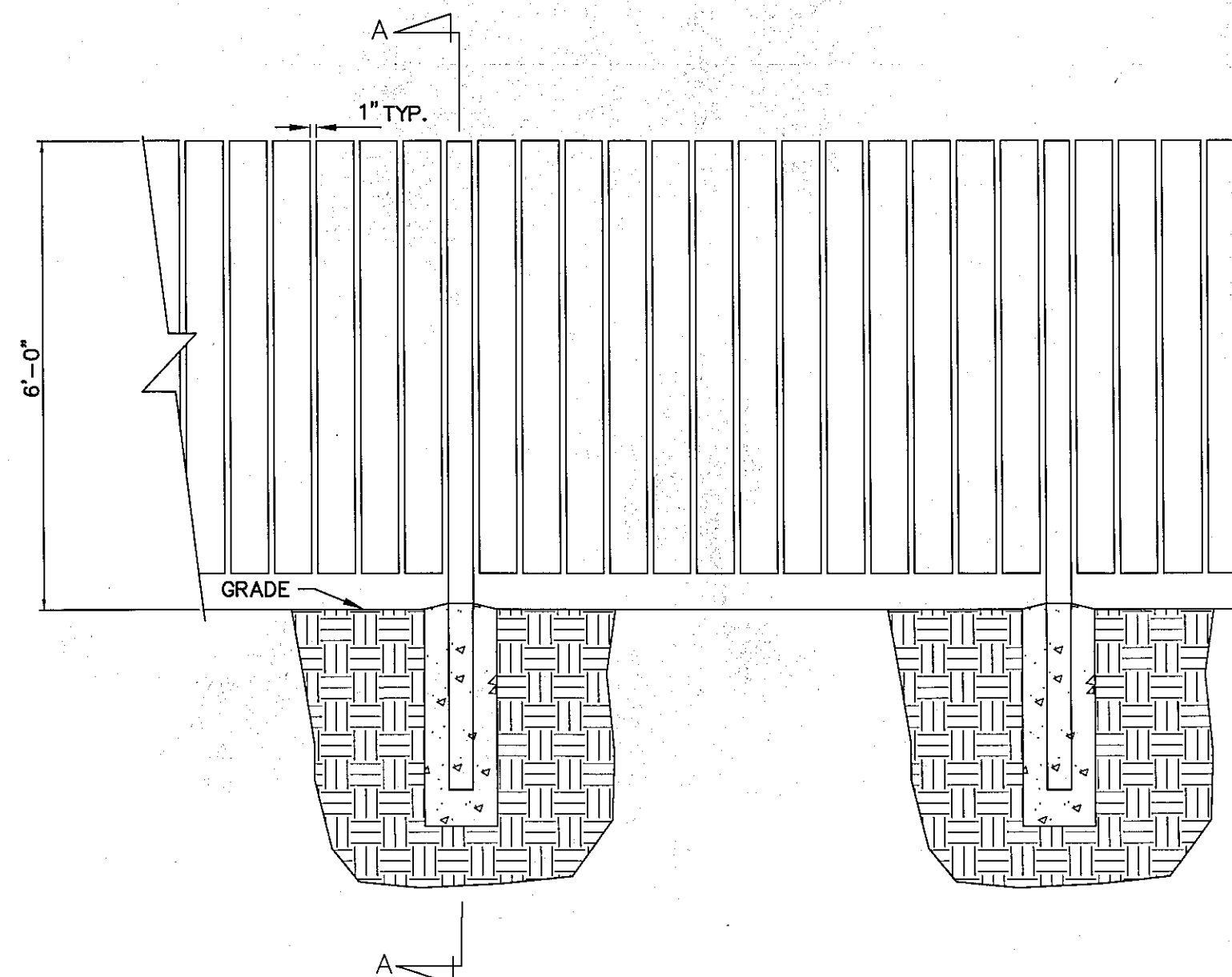
PLANNING BOARD APPROVAL

CHAIN LINK FENCE GATE NOTES:

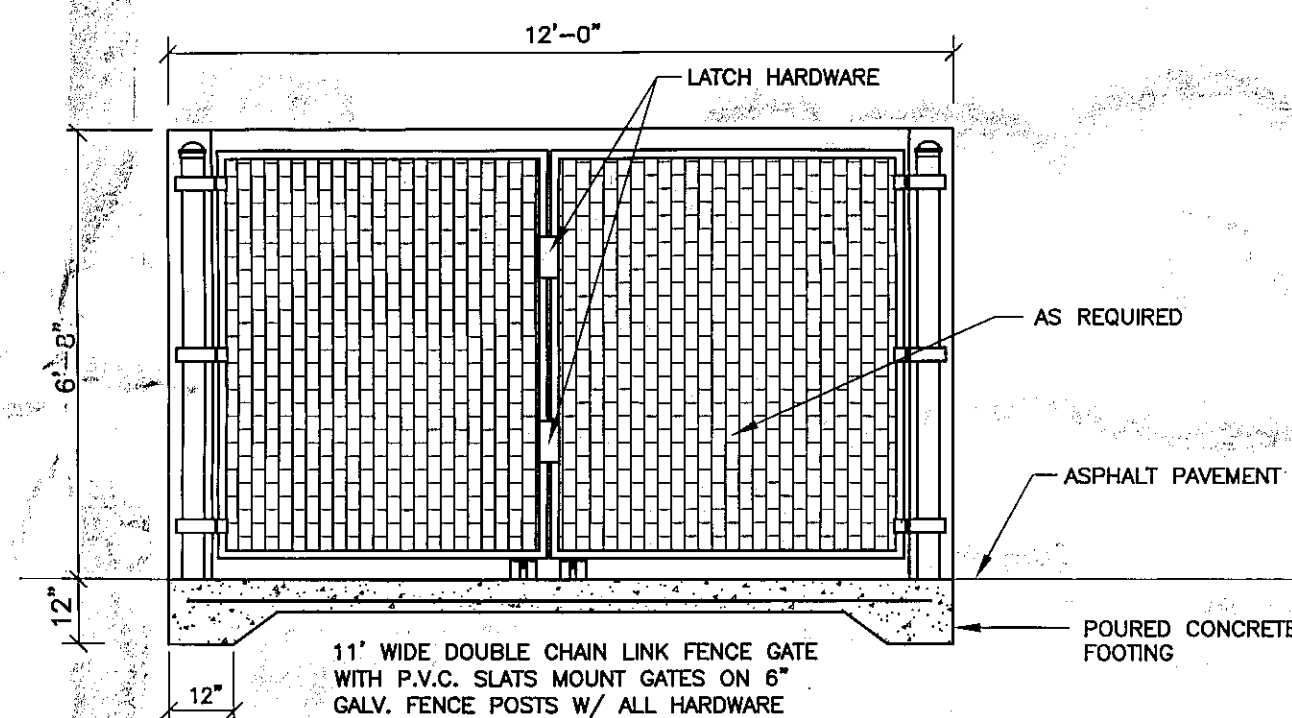
- GATE POST FOOTINGS TO BE MIN. 36" DEEP x (4x) POST
DIAMETER, EXTEND POST TO WITHIN 6" OF BOTTOM.
- GATE FRAMES TO BE 2" SQ. GALVANIZED STEEL, WEIGHING
2.60 LB/FT IN ACCORDANCE WITH ASTM F 900.
- CHAIN LINK FENCE FABRIC SHALL BE 2" MESH, 9 GAUGE,
ZINC COATED STEEL CORE WIRE. INSTALL MESH WITH HOOK
BOLTS AND TENSION BARS ON ALL 4 SIDES, ATTACH AT 15" MAX.
- DOUBLE GATE LATCH TO BE FORKED TYPE CAPABLE OF RETAINING
GATE IN CLOSED POSITION AND HAVE PROVISION FOR PAD LOCK. LATCH
SHALL BE OPERABLE FROM EITHER SIDE OF GATE.
- ALL HARDWARE TO BE HOT DIPPED GALVANIZED STEEL TO SUIT GATE SIZE.



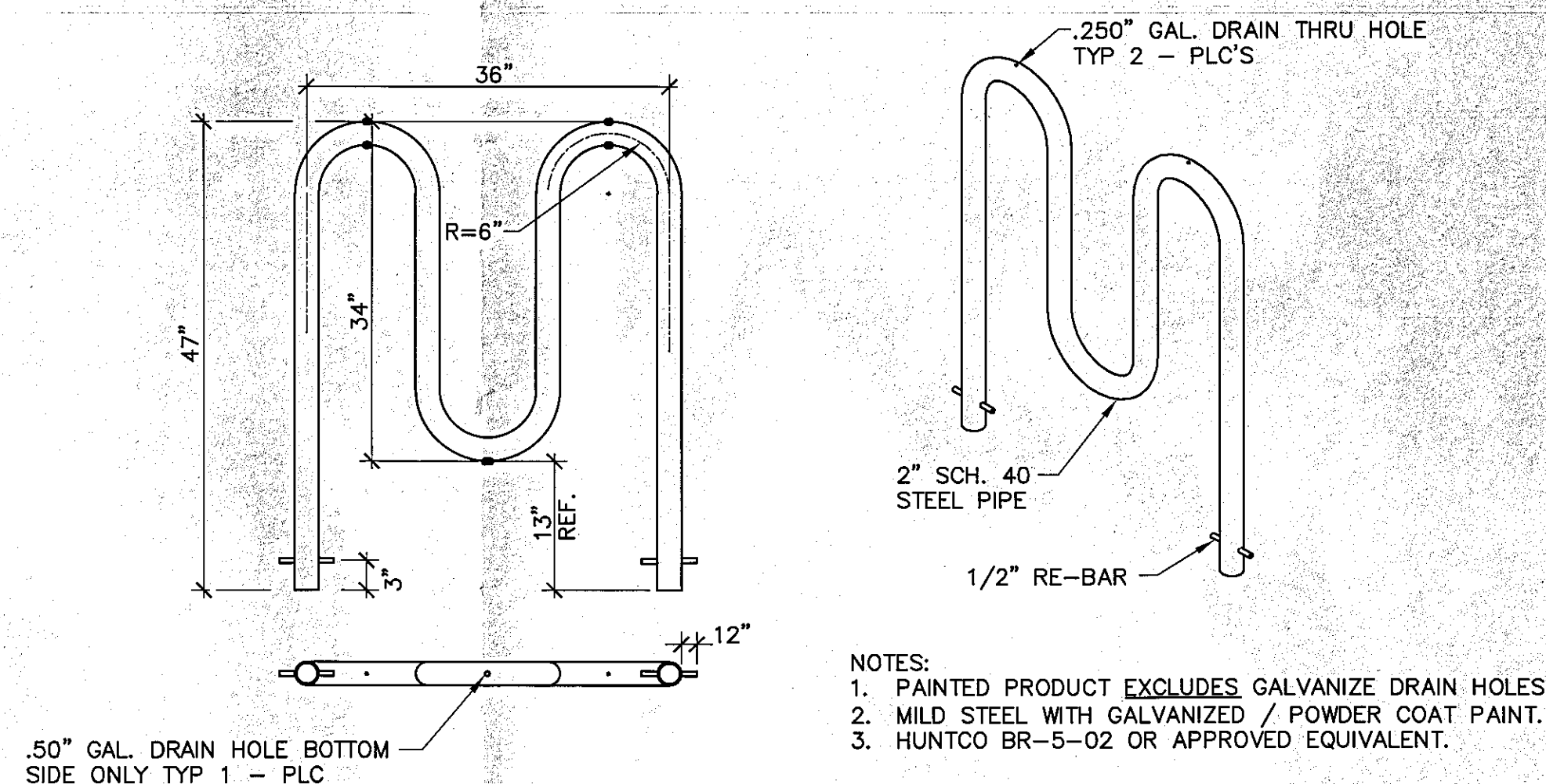
SECTION A-A



DUMPSTER ENCLOSURE FENCE

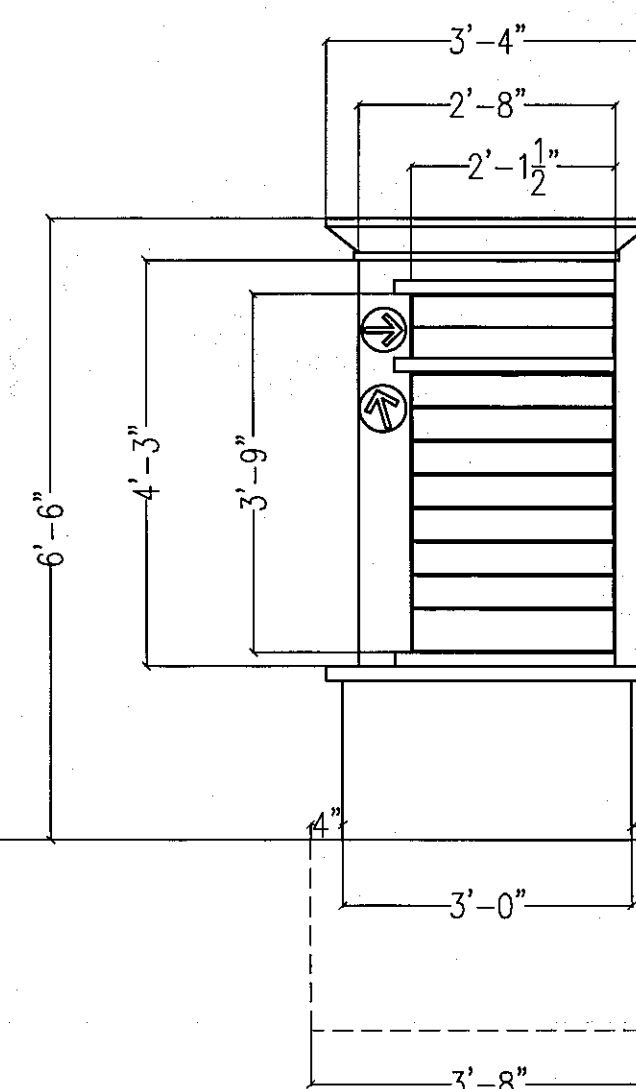


ELEVATION B



BIKE RACK DETAIL

FRONT VIEW



DIRECTIONAL SIGN DETAIL

NOT TO SCALE

- SIGN NOTES:
- ONE DOUBLE FACED NON-ILLUMINATED
DIRECTIONAL SIGN
 - TENANT PANEL CONFIGURATION &
ARROW DESTINATIONS TBD
 - CONCRETE PAD/ FOUNDATION TO CODE/
3'8" MIN.