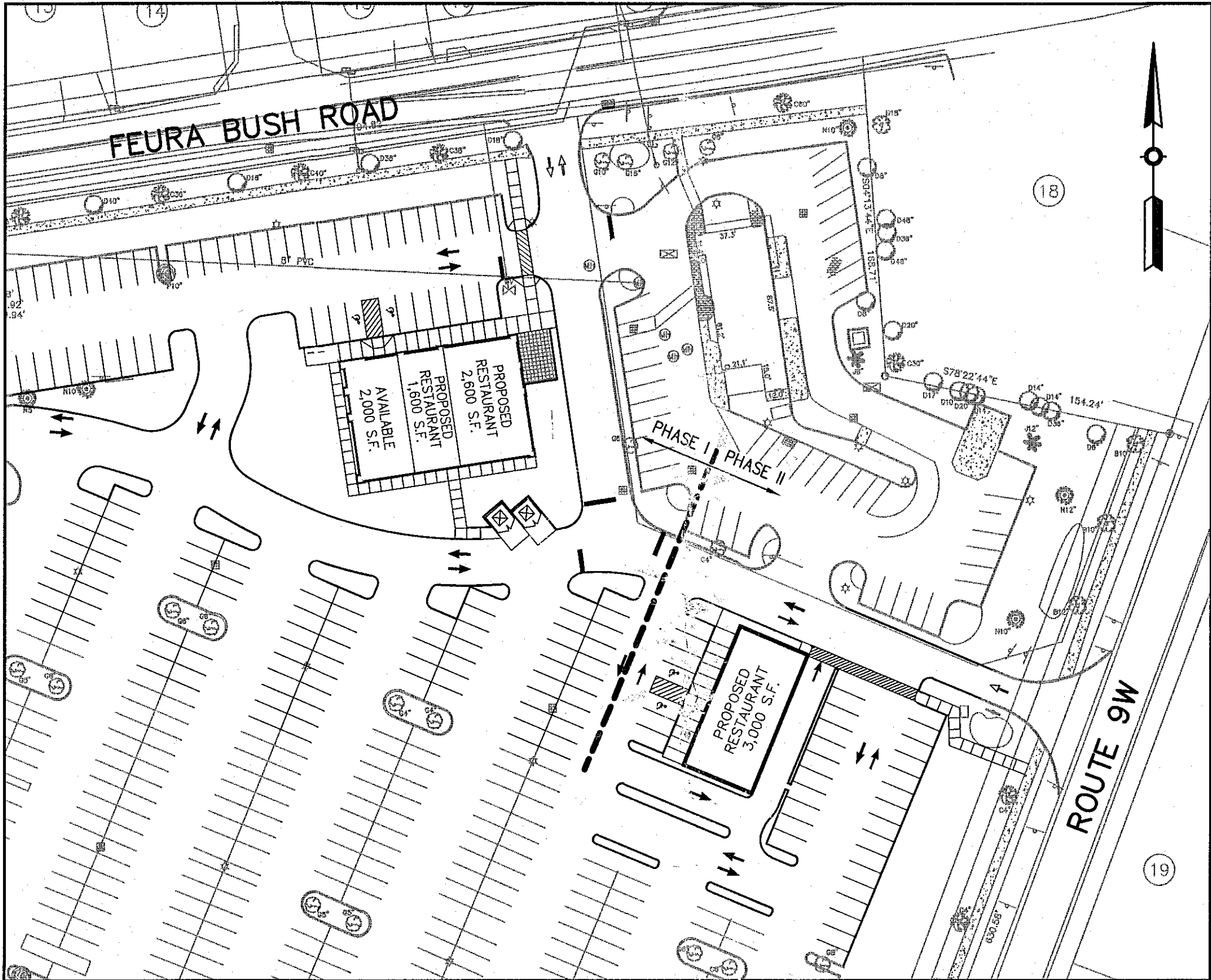
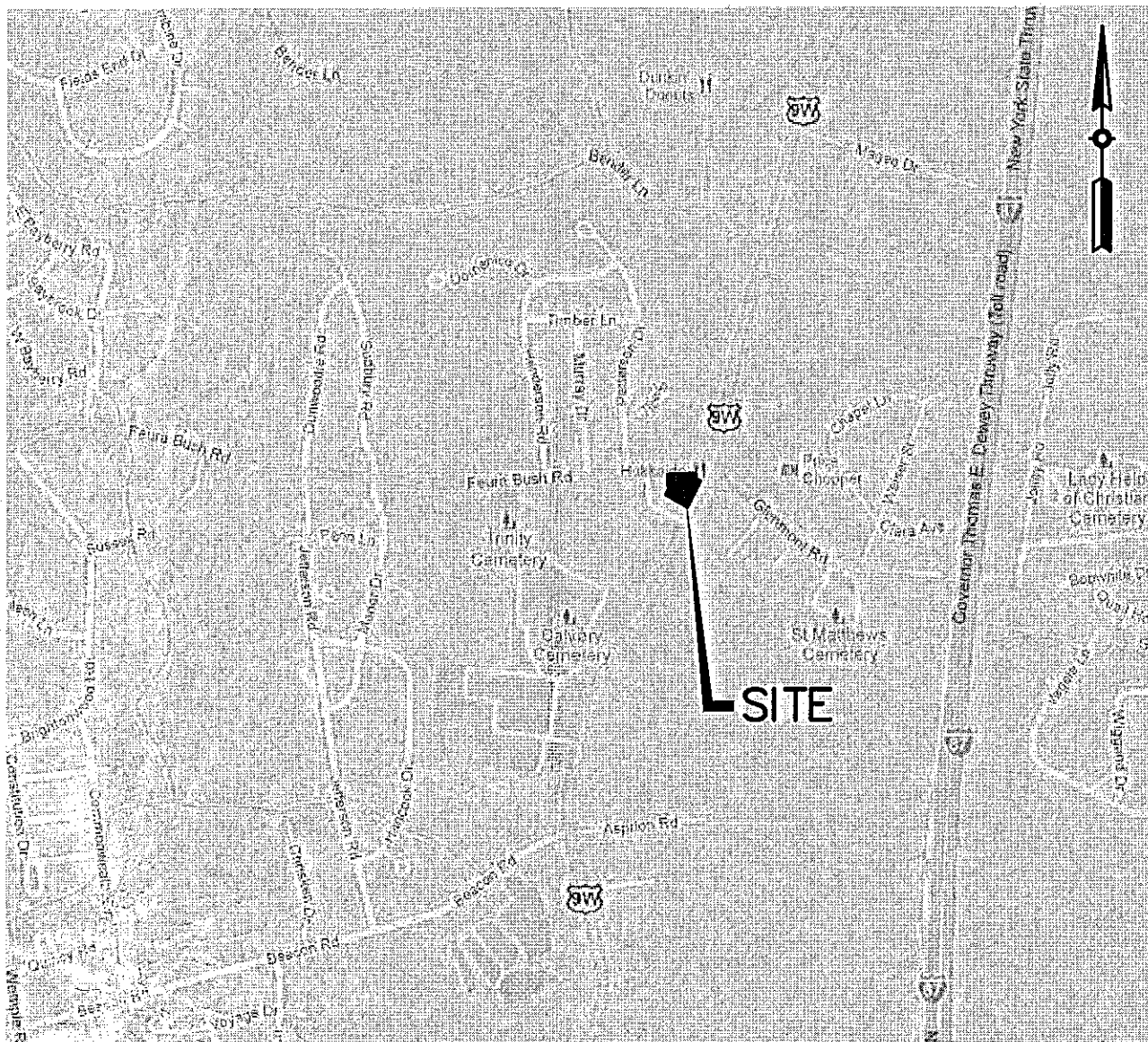


GLENMONT PLAZA - 380 FEURA BUSH ROAD PROPOSED PAD SITE, TOWN OF BETHLEHEM NEW YORK, ALBANY COUNTY



OVERALL SITE PLAN

SCALE: 1"=60'



LOCATION MAP
N.T.S.

DWG NO.	DESCRIPTION	SHEET NO.
C1	TITLE SHEET	1 OF 13
C2	BOUNDARY AND TOPOGRAPHIC SURVEY	2 OF 13
C3	DEMOLITION AND EROSION CONTROL PLAN	3 OF 13
C3.1	DISTURBANCE PLAN	4 OF 13
C4	SITE LAYOUT PLAN	5 OF 13
C4.1	SITE DETAILS	6 OF 13
C4.2	SITE DETAILS	7 OF 13
C5	GRADING PLAN	8 OF 13
C6	UTILITY PLAN	9 OF 13
C6.1	WATER MAIN DETAILS	10 OF 13
C6.2	SANITARY SEWER DETAILS	11 OF 13
C6.3	SANITARY SEWER DETAILS	12 OF 13
C7	SITE LIGHTING AND LANDSCAPE PLAN AND DETAILS	13 OF 13

UTILITY COMPANIES

WATER

ATTN: ERIK T. DEYOE, P.E.
TOWN OF BETHLEHEM WATER DISTRICT
TOWN HALL ROOM 203
445 DELAWARE AVENUE
DELMAR, NY 12054
PHONE: (518) 439-4955 OPTION 1
FAX: (518) 439-1699

SANITARY SEWER

ATTN: ERIK T. DEYOE, P.E.
TOWN OF BETHLEHEM SEWER DISTRICT
TOWN HALL ROOM 203
445 DELAWARE AVENUE
DELMAR, NY 12054
PHONE: (518) 439-4955 OPTION 1
FAX: (518) 439-1699

STORM SEWER

ATTN: PAUL PENMAN, P.E.
TOWN OF BETHLEHEM STORMWATER
TOWN HALL ROOM 203
445 DELAWARE AVENUE
DELMAR, NY 12054
PHONE: (518) 439-4955 OPTION 1
FAX: (518) 439-1699

ELECTRIC

NATIONAL GRID
PHONE: (518) 433-3788

GAS

ENBRIDGE ENERGY COMPANY, INC.
PHONE: (817) 220-1261

TELEPHONE

VERIZON COMMUNICATIONS
PHONE: (518) 471-7514

APPROVAL AGENCIES

TOWN ENGINEER

ATTN: PAUL PENMAN, P.E.
TOWN HALL ROOM 203
445 DELAWARE AVENUE
DELMAR, NY 12054
PHONE: (518) 439-4955
FAX: (518) 439-1699

DESIGN CONSULTANTS

PROJECT SURVEYOR

TECTONIC ENGINEERING & SURVEYING CONSULTANTS P.C.
12 CORNELL ROAD
LATHAM, NY 12110
PHONE: (518) 783-1630
FAX: (518) 783 1544

CLIENT

BENDERSON DEVELOPMENT COMPANY, LLC
570 DELAWARE AVENUE
BUFFALO, NEW YORK 14202

PROJECT NUMBER:

BDC #4005

NOTE:
384 FEURA BUSH ROAD IS NOT PART OF THIS
APPROVAL - REQUIRES SEPARATE APPROVAL FROM
THE TOWN OF BETHLEHEM PLANNING BOARD

8	4/13/15	REVISED PER OWNER
7	3/09/15	REVISED PER OWNER
6	1/26/15	REVISED PER OWNER
5	2/20/14	REVISED PER OWNER
4	10/15/13	REVISED PER TOWN COMMENTS
3	7/19/13	REVISED PER TOWN COMMENTS
2	3/12/13	REVISED PER OWNER
1	1/9/13	REVISED PER TOWN COMMENTS
NO.	DATE	DESCRIPTION
REVISIONS:		

PLANNING BOARD
TOWN OF BETHLEHEM
ALBANY COUNTY, NEW YORK
By direction of the Chairmen.
These drawings are hereby approved.
See sheet(s) C1
for date and signature.

TOWN OF BETHLEHEM, NEW YORK
PLANNING DEPT. ORIGINAL
- SCANNED -

0 1 INCHES 2

PLANNING BOARD APPROVAL

GLENMONT PLAZA - 380 FEURA BUSH ROAD
PROPOSED PAD SITE, TOWN OF BETHLEHEM
NEW YORK, ALBANY COUNTY

ERDMAN
ANTHONY

11 CENTURY HILL DRIVE, SUITE 105
Latham, NY 12110
Telephone (518) 783-1205
Facsimile (518) 783-0374
www.erdmananthony.com

PROJ. NO.:
17700.55
DATE:
FEB. 2013
SCALE:
N.T.S.
DRAWING NO.:
C1
SHEET NO.:
1 OF 13

PROJ. MGR.:
RLD
DRWN. BY:
MFJ
CHKD. BY:
RLD

FILE

SPA 60 A15 04/21/2015