

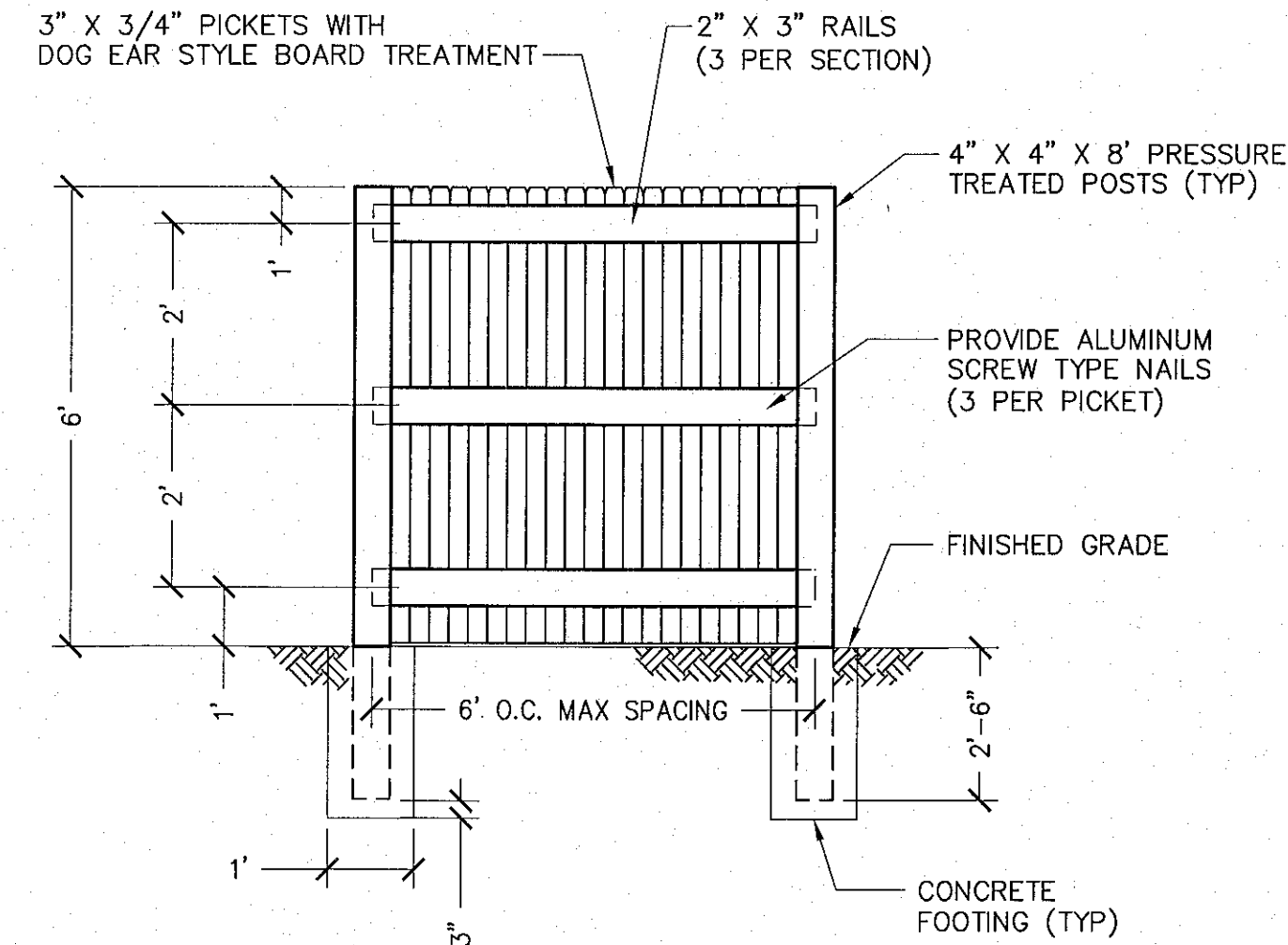
- NOTE:
1. DIG TRENCH
 2. LAY IN FABRIC TO BOTTOM OF TRENCH
 3. BACKFILL TRENCH, COVERING FABRIC

SILT FENCE DETAIL

NO SCALE

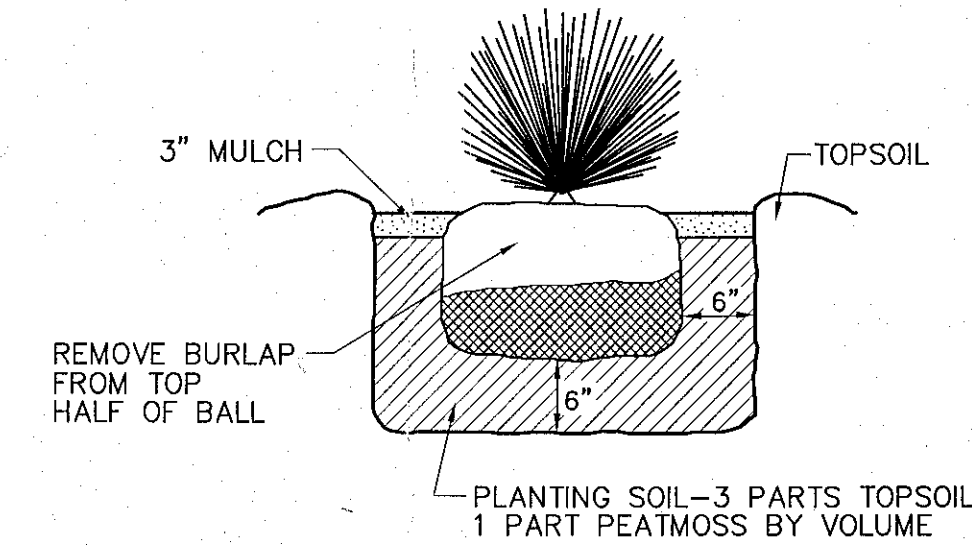
CONSTRUCTION NOTES FOR FABRICATED SILT FENCE

1. WOVEN WIRE FENCE TO BE FASTENED SECURELY TO FENCE POSTS WITH WIRE TIES OR STAPLES.
 2. FILTER CLOTH TO BE FASTENED SECURELY TO WOVEN WIRE FENCE WITH TIES SPACED EVERY 24" AT TOP AND MID SECTION.
 3. WHEN TWO SECTIONS OF FILTER CLOTH ADJOIN EACH OTHER THEY SHALL BE OVER-LAPPED BY SIX INCHES AND FOLDED.
 4. MAINTENANCE SHALL BE PERFORMED AS NEEDED AND MATERIAL REMOVED WHEN "BULGES" DEVELOP IN THE SILT FENCE.
 5. ALL SILT FENCE MATERIALS MUST BE LISTED ON THE CURRENT STATES. D.O.T. QUALIFIED PRODUCTS LIST.
- POSTS: STEEL EITHER T OR U TYPE.
- FENCE: WOVEN WIRE, 14 GA. 6" MAX. MESH OPENING.
- FILTER CLOTH: FILTER X, MIRAFI 100X STABLINKA T140N OR APPROVED EQUAL.
- PREFABRICATED UNIT: GEOFAB, ENVIROFENCE OR APPROVED EQUAL.



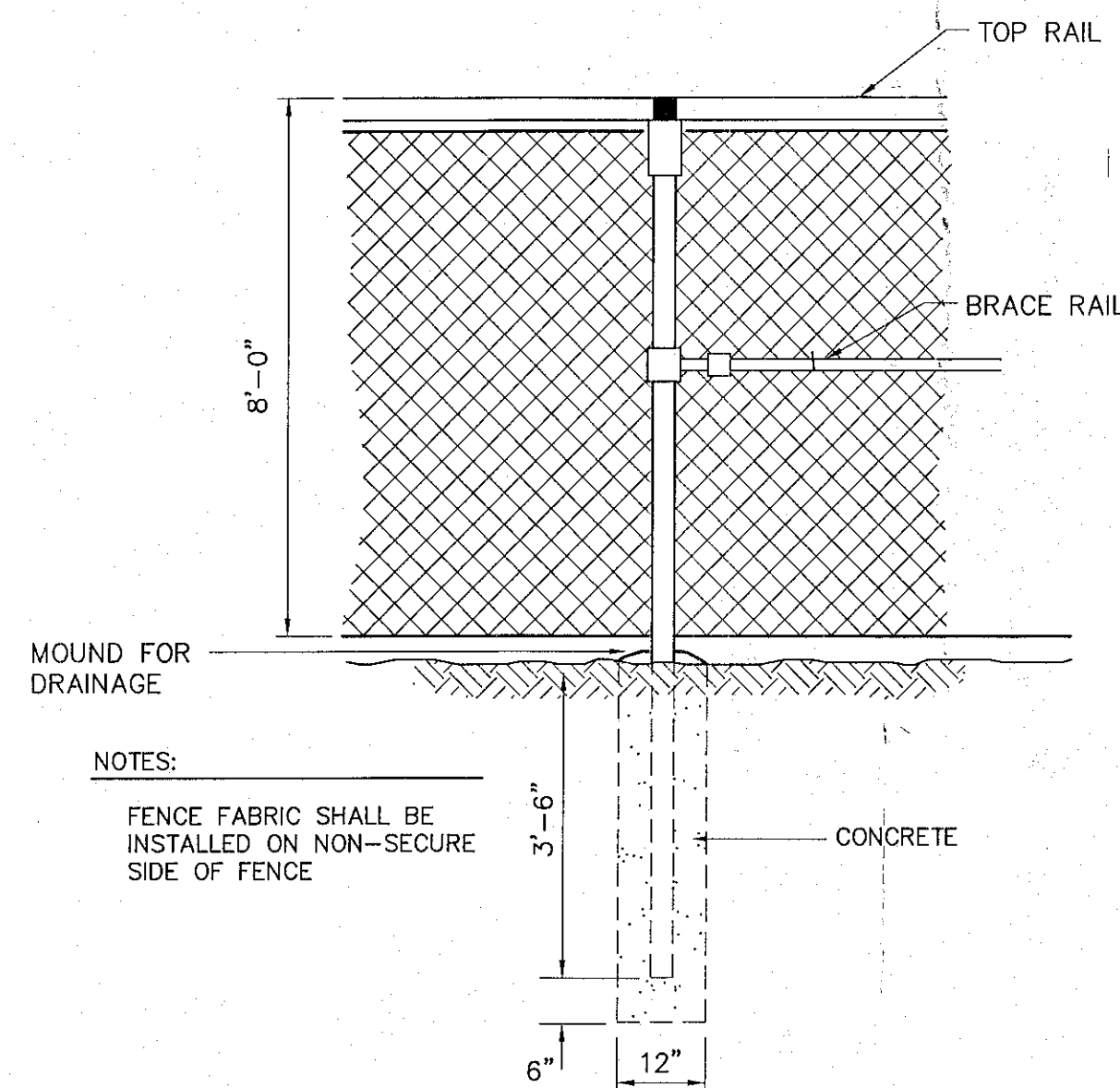
STOCKADE FENCE DETAIL (DOG EAR-STYLE)

NO SCALE



TYPICAL SHRUB PLANTING DETAIL

NO SCALE

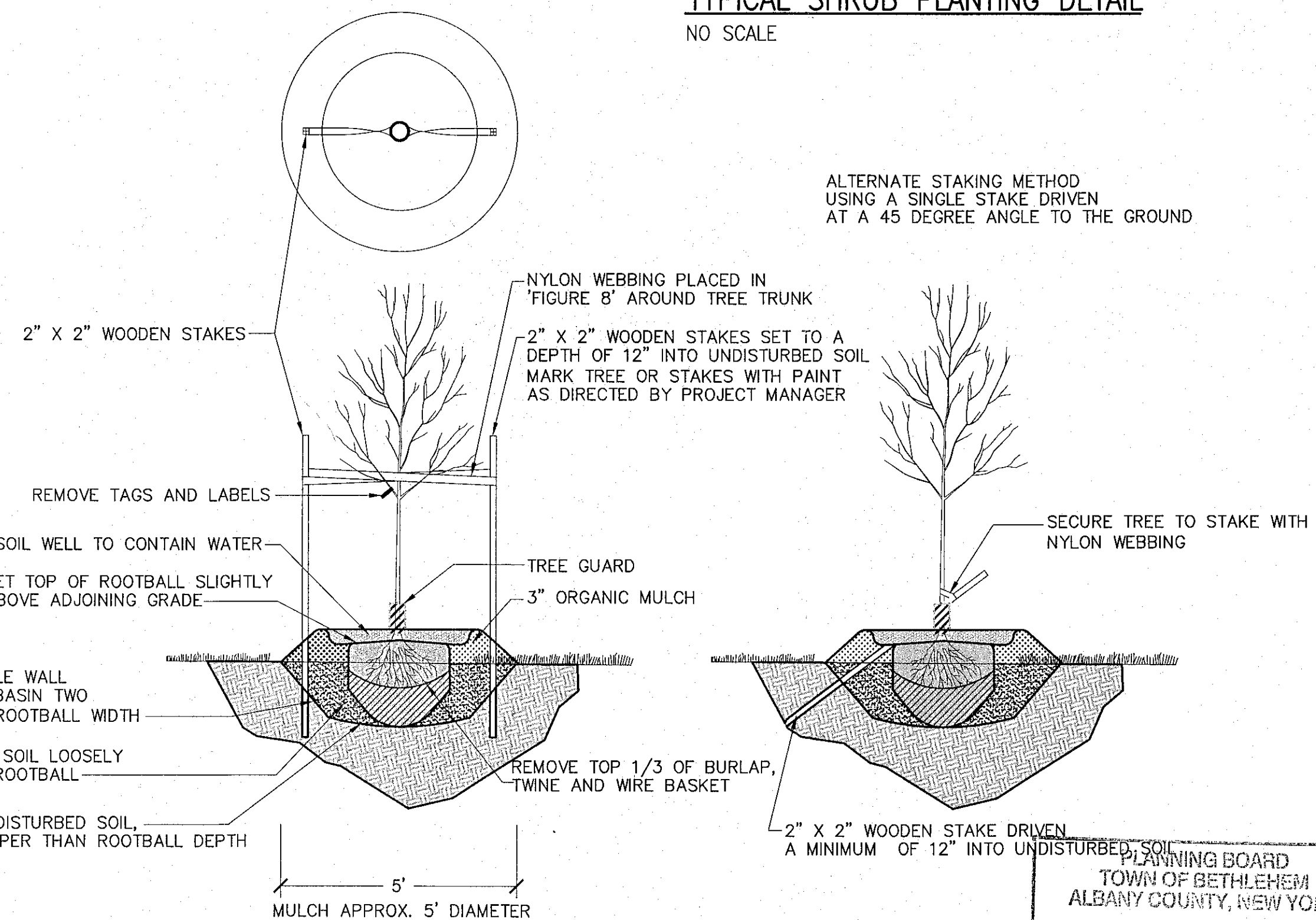


CHAIN LINK FENCE

NO SCALE

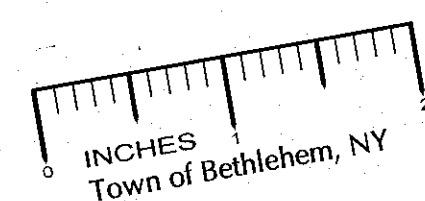
NOTES:

1. FABRIC: 96" 9 GA. BLACK VINYL COATED (2" MESH) CHAIN LINK FABRIC
2. TOP & BOTTOM RAIL: 1 5/8" O.D. FULL WEIGHT PIPE, 2.28 LBS. PER FOOT MIN. TOP RAIL TO BE JOINED WITH 1 5/8" SLEEVE. BOTTOM RAIL @ 18" ABOVE GRADE.
3. LINE POST: 2 1/2" O.D. FULL WEIGHT PIPE, 3.65 LBS. PER FOOT MIN. LINE POST TO BE SET 10' ON CENTER MAX. SPACING. CONCRETE FOOTING TO BE 8" DIA. BY 30" DEEP CONCRETE.
4. TERMINAL POST: 3" O.D. FULL WEIGHT PIPE, 5.79 LBS. PER FOOT MIN. SET IN 8" DIA. BY 36" DEEP CONCRETE FOOTING.
5. GATE POST: 4" O.D. FULL WEIGHT PIPE, 9.10 LBS. PER FOOT MIN. 8" DIA., 36" DEEP CONCRETE FOOTING
6. GATES: (5) 2-10 FOOT CANTILEVERED VINYL COATED CHAIN LINK GATES, 2-20 FOOT SWING GATE WITH FRAMEWORK OF 1 5/8" FULL WEIGHT PIPE, 2.27 LBS. PER FOOT MIN. GATES BRACED AND TRUSSED AS NECESSARY. SAME FABRIC AS FENCE, SEE PLAN FOR WIDTH.
7. ROLLING GATES: DESIGN AS PER THE MANUFACTURERS DESIGN STANDARDS. GATES SHALL BE MANUALLY OPERATED ROLLING CANTILEVERED WITH RUBBER WHEELS AT FRONT OF GATE, AND BUMPER STOPS AT GATE ENDS, ROLLERS TO BE NYLON.
8. TENSION WIRE: 7 GA. COIL SPRING GALVANIZED TENSION WIRE ATTACHED TO BOTTOM OF FENCE FABRIC WITH 9 GA. ALUM. HOG RING SPACED 24" O.C.
9. FITTINGS: HEAVY BRACED BAND AND CARRIAGE BOLT, PRESSED STEEL, RAIL END, PRESSED STEEL, LOOP CAP, PRESSED STEEL CAP, 1/4"x3/4" TENSION BAR, HEAVY TENSION BAND AND CARRIAGE BOLT.
10. TIE WIRE: 8 1/4" 12 GA. STEEL TIE WIRE AND 6 1/2" 12 GA. STEEL WIRE SPACED 15" O.C. FOR LINE POST AND 24" O.C. FOR RAILS.
11. POST FOOTING: TRUCK POURED CONCRETE.



PLAN OF TYPICAL TREE PLANTING INSTALLATIONS

NO SCALE

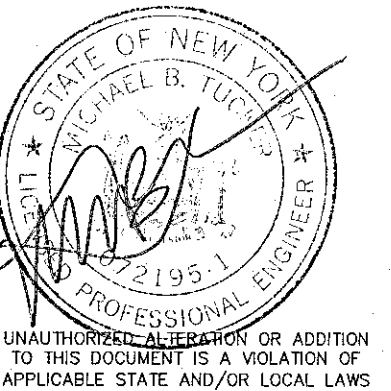


PLANNING BOARD
TOWN OF BETHLEHEM
ALBANY COUNTY, NEW YORK

This Site Plan Approved.

George J. ...
Title: *Chairman*
SPR110 Amendment C
Date: *7-13-09*

infinity
engineering
& surveying
11 Herbert Drive
Latham, New York 12110
(518) 690-0790



No.	Submittal / Revision	App'd	Date
0			

Drawn: JDF Date: 04/09
Designed: MBT Date: 04/09
Checked: MBT Date: 04/09

Project Number 182-092

Project Title

Tractor Supply
Town Squire
Plaza

329 Glenmont Road
Town of Bethlehem
Albany Co., New York

Prepared For

Schuyler
Companies

596 New Loudon Road
Latham, New York 12110



Drawing Title

Details

Drawing Scale: -
Date: 06-22-2009

Drawing Number

C-6