

VEHICLE CAPACITY (DIESEL)		
TYPE	FULL SERVE	SELF SERVE
FUELING	--	8
WAITING TO BE FUELED	--	3
TOTALS	--	11
TOTAL NUMBER OF DISPENSING UNITS:		8
TOTAL NUMBER OF FUELING POSITIONS:		14

CCTV CAMERAS			
LANE #	FULL/SERVE	SELF SERVE	FULL SERVE
LANE 1	--	1	--
LANE 2/3	--	2	--
LANE 4/5	--	2	--
LANE 6/7	--	2	--
LANE 8	--	1	--

U/G STORAGE TANKS				
TANK	CAPACITY	PRODUCT	TYPE	INSTALL DATE
A	15,000 GAL.	GASOLINE	DW FIBERGLASS	NEW-TBD
B	15,000 GAL.	GASOLINE	DW FIBERGLASS	NEW-TBD
C	10,000 GAL.	GASOLINE	DW FIBERGLASS	NEW-TBD
D	10,000 GAL.	DIESEL	DW FIBERGLASS	NEW-TBD
E	10,000 GAL.	DIESEL	DW FIBERGLASS	NEW-TBD

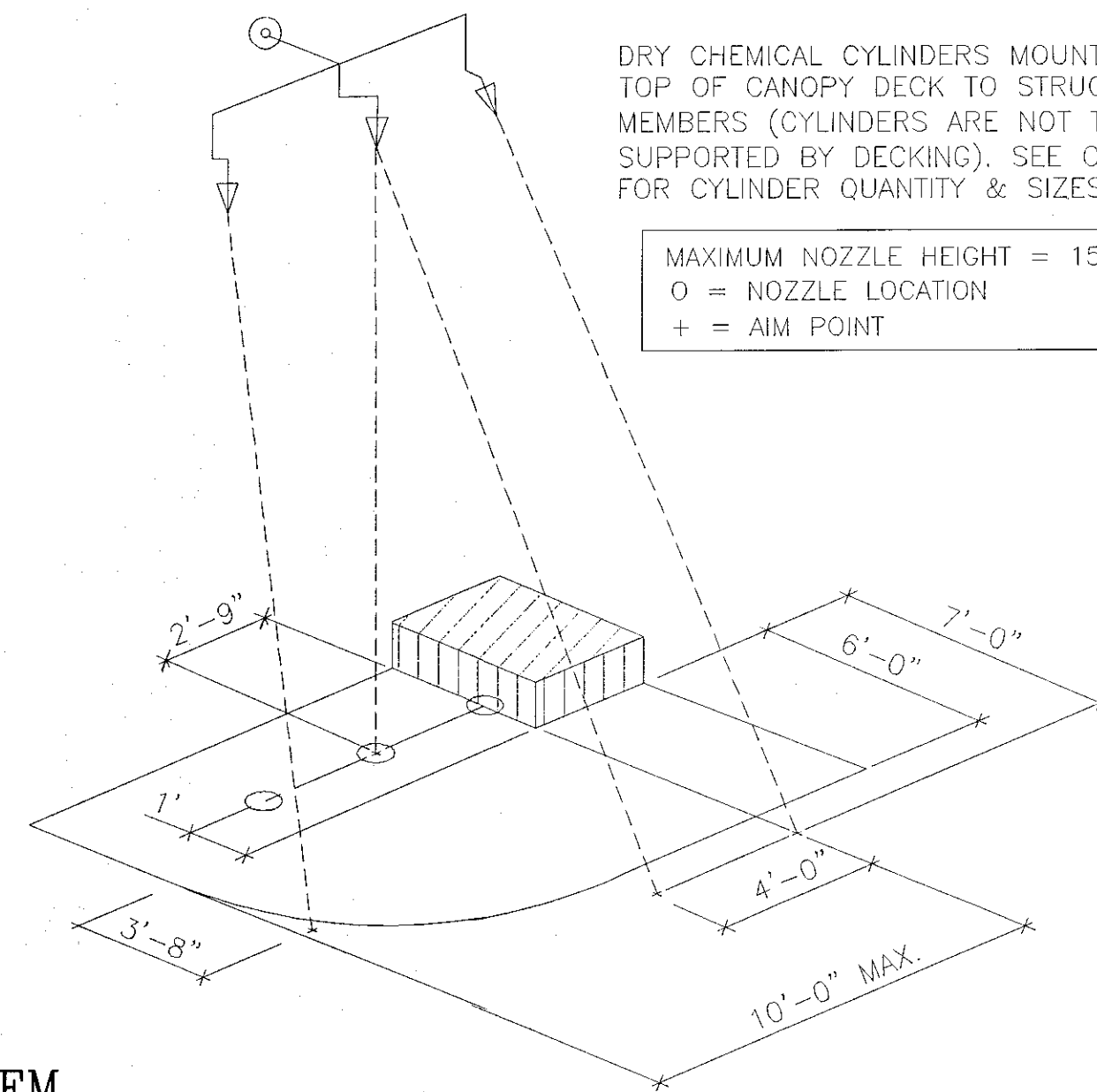
SITE SPECIFIC SYSTEM COMPONENT TABLE *			
NUMBER OF SYSTEMS REQ'D	NUMBER OF NOZZLES REQ'D	NUMBER OF CYL. REQ'D	CYLINDER SIZE & QTY.
(3) 16' LONG SYSTEMS	(24) PER SYSTEM (72) TOTAL	(4) PER SYSTEM (12) TOTAL	ATD-35BC= 0 ATD-80BC=12
(2) 8' LONG 1/2 SYSTEMS	(9) PER SYSTEM (18) TOTAL	(3) PER SYSTEM (6) TOTAL	ATD-35BC= 6 ATD-80BC= 0
* INCLUDES MAIN AND END OF ISLAND PROTECTION.			

MISCELLANEOUS CHARTS

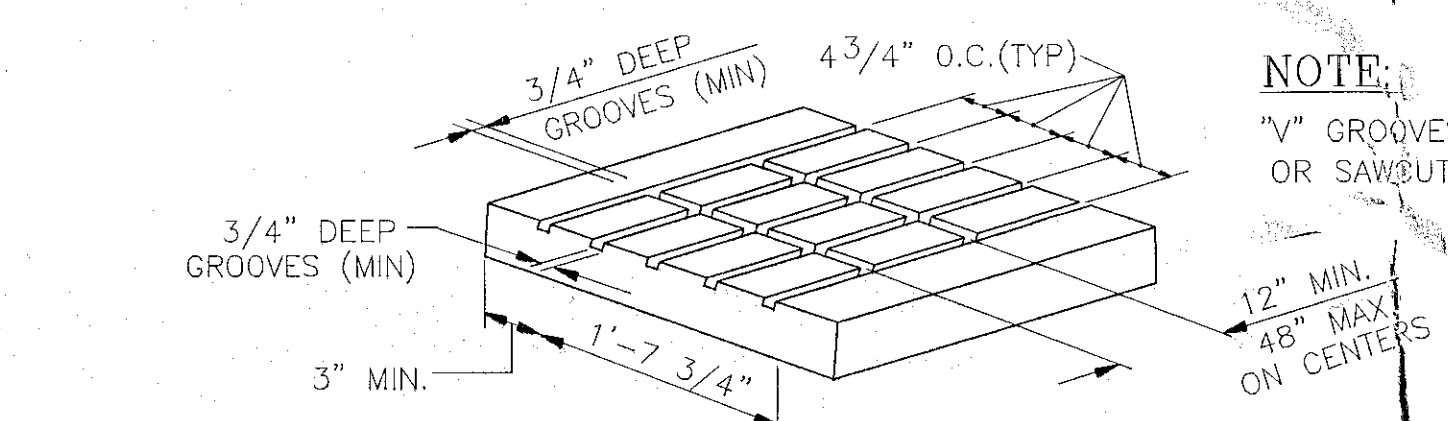
SPECIAL NOTE:
IN THE EVENT OF A CONFLICT BETWEEN THIS DRAWING AND THE UL LISTED PYRO-CHEM INC. "THE ATTENDANT II" TECHNICAL MANUAL, THE TECHNICAL MANUAL SHALL GOVERN.
NOTIFY ENGINEER IMMEDIATELY OF ANY CONFLICT

DRY CHEMICAL CYLINDERS MOUNTED ON TOP OF CANOPY DECK TO STRUCTURAL MEMBERS (CYLINDERS ARE NOT TO BE SUPPORTED BY DECKING). SEE CHART FOR CYLINDER QUANTITY & SIZES.

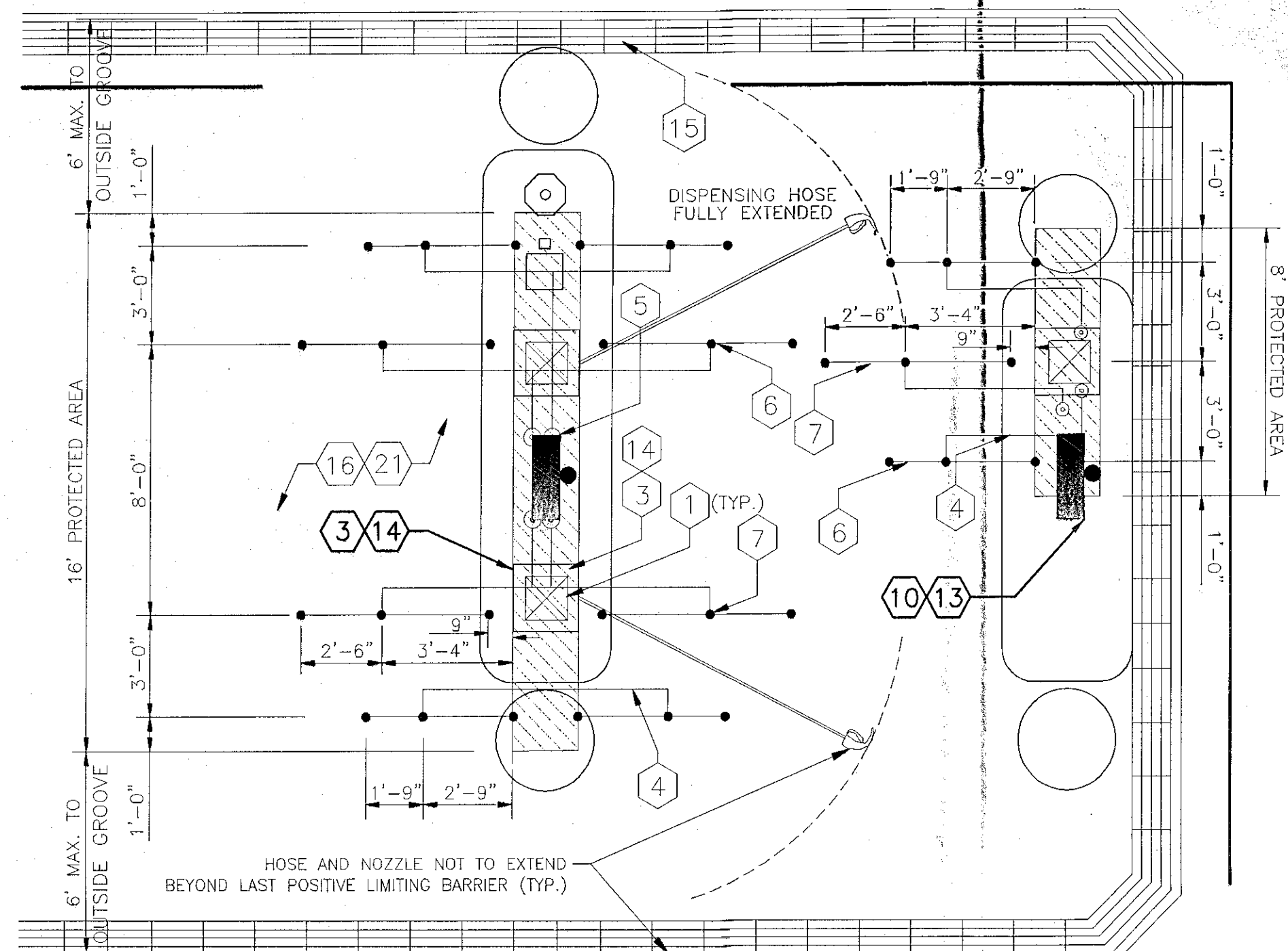
MAXIMUM NOZZLE HEIGHT = 15'-0"
O = NOZZLE LOCATION
+ = AIM POINT



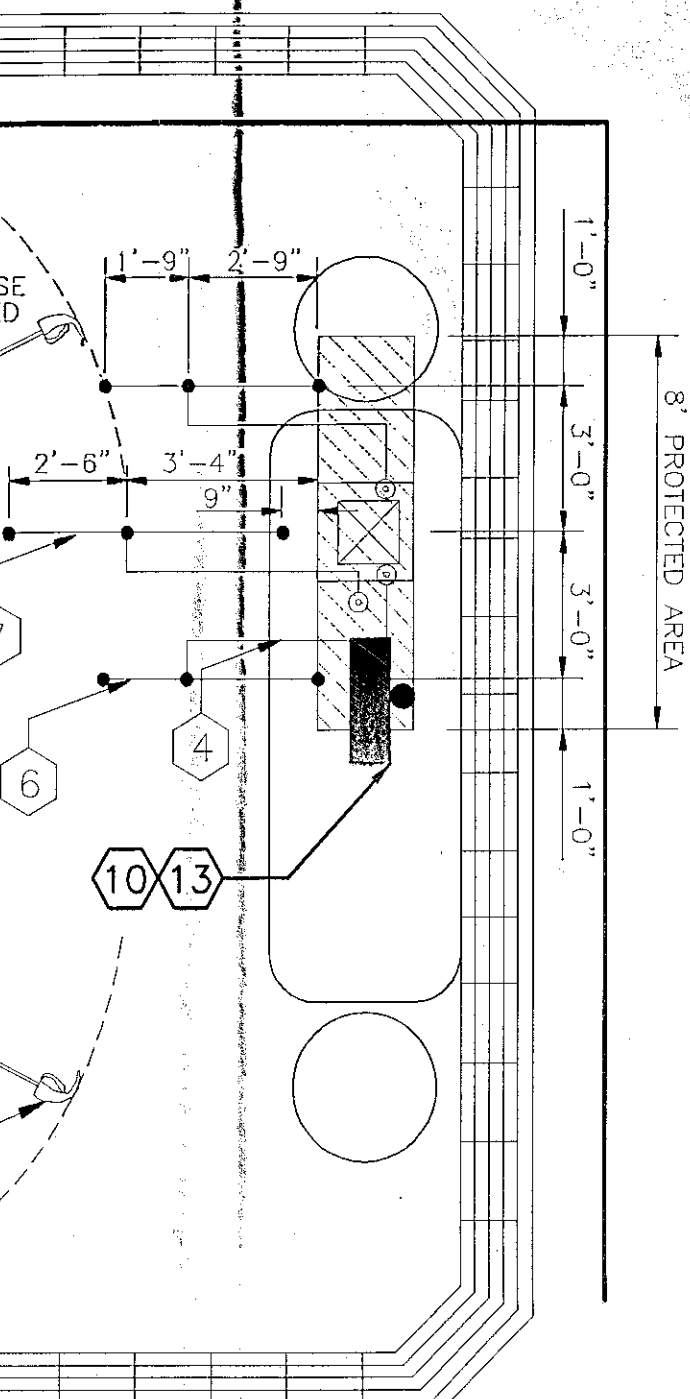
END OF ISLAND PROTECTION
SCALE: NONE



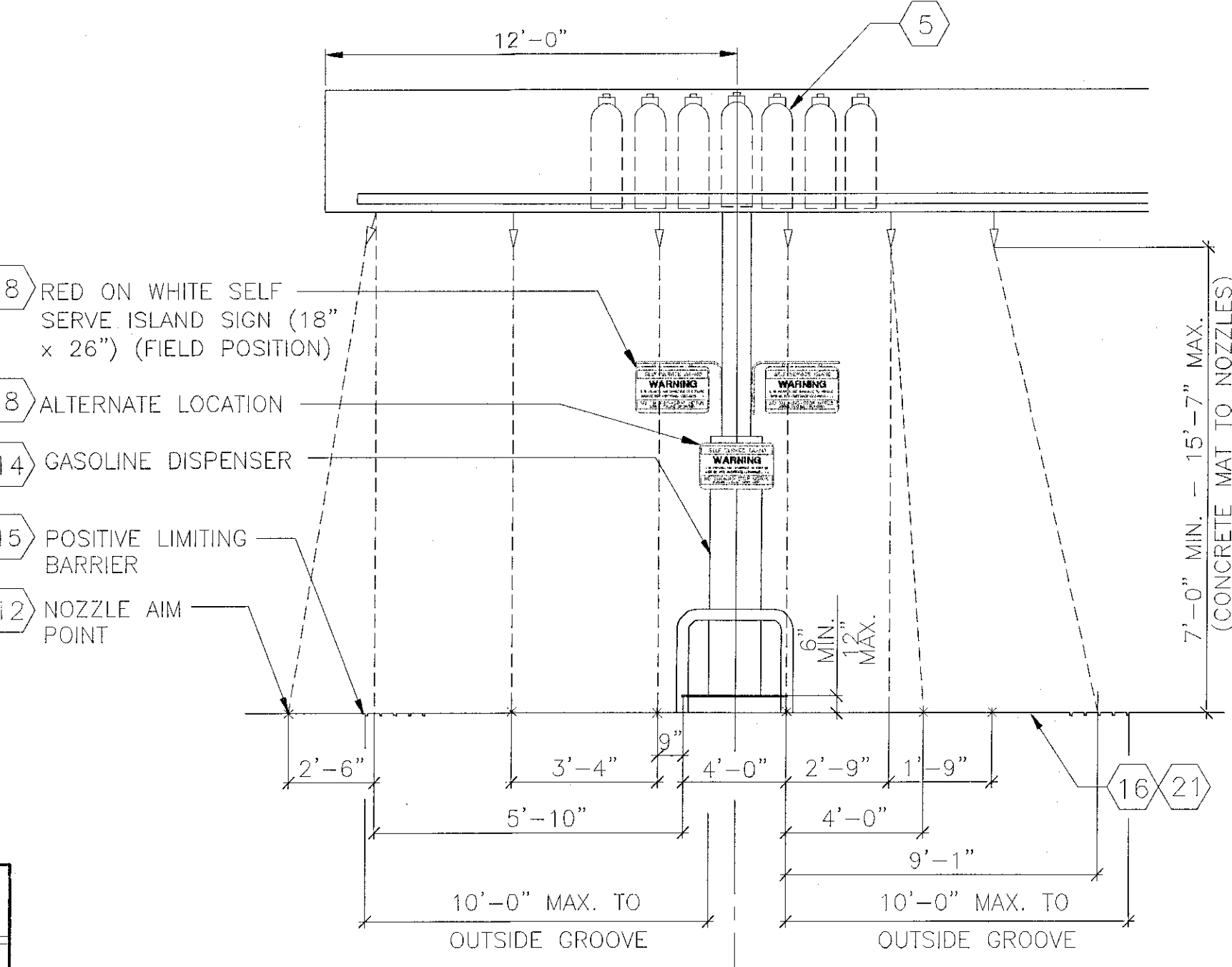
15 POSITIVE LIMITING BARRIER SAW CUTS & PATTERNS
NOT TO SCALE



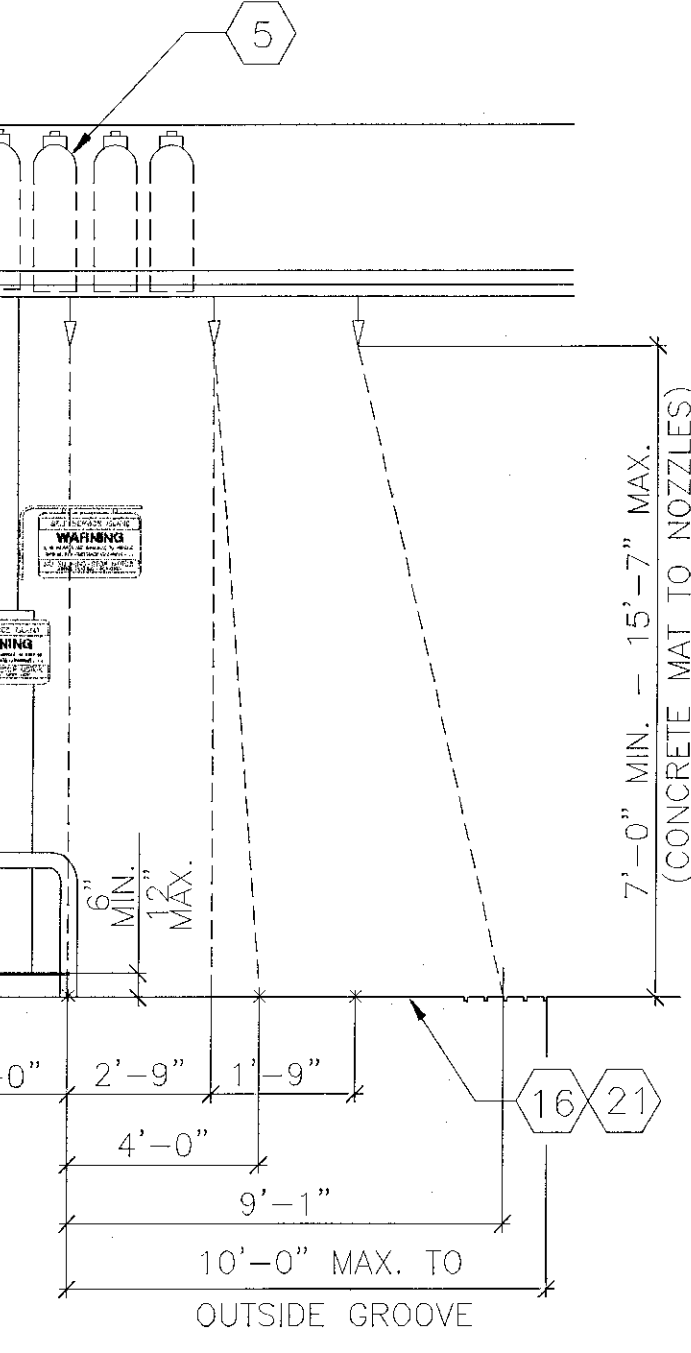
PLAN VIEW FOR COMPRESSED SYSTEM
MIDDLE ISLANDS (TYP. 3)
SCALE: 1/4" = 1'



PLAN VIEW FOR 1/2 SYSTEM
END ISLANDS (TYP. 2)
SCALE: 1/4" = 1'



END VIEW - MAIN ISLAND
AREA PROTECTION
SCALE: 1/4" = 1'-0"



END VIEW - END OF
ISLAND PROTECTION
SCALE: 1/4" = 1'-0"

GENERAL NOTES:

- THE THERMAL DETECTORS SHALL BE MOUNTED ON THE CANOPY'S UNDERSURFACE OR ON THE UNDERSIDE OF AN 18"x18"x2" HEAT COLLECTOR AND NO HIGHER THAN THE NOZZLES.
- THE THERMAL DETECTORS SHALL BE INSTALLED ON FIFTEEN (15) FOOT MAXIMUM CENTERS ALONG A SINGLE LINE SYMMETRICALLY OVER THE CENTER OF THE AREA BEING PROTECTED.
- NOZZLE AND HOSE FROM EACH PETROLEUM PRODUCT DISPENSER SHALL NOT EXTEND BEYOND POSITIVE LIMITING BARRIER AND NO PETROLEUM PRODUCT SHALL BE DISPENSED BEYOND POSITIVE LIMITING BARRIER.

SELF SERVICE ISLAND
WARNING
IT IS UNLAWFUL AND DANGEROUS TO DEFENSE GASOLINE INTO UNAPPROVED CONTAINERS.
NO SMOKING-STOP MOTOR DURING FUELING OPERATION.

NOTES:

DIMENSIONS 18" BY 26"
WHITE BACKGROUND WITH RED MASKING

LETTERING SIZE AND ARRANGEMENT SHALL BE IN BLOCK LETTERS MIN. HEIGHT 2"
AS SHOWN TO RIGHT.

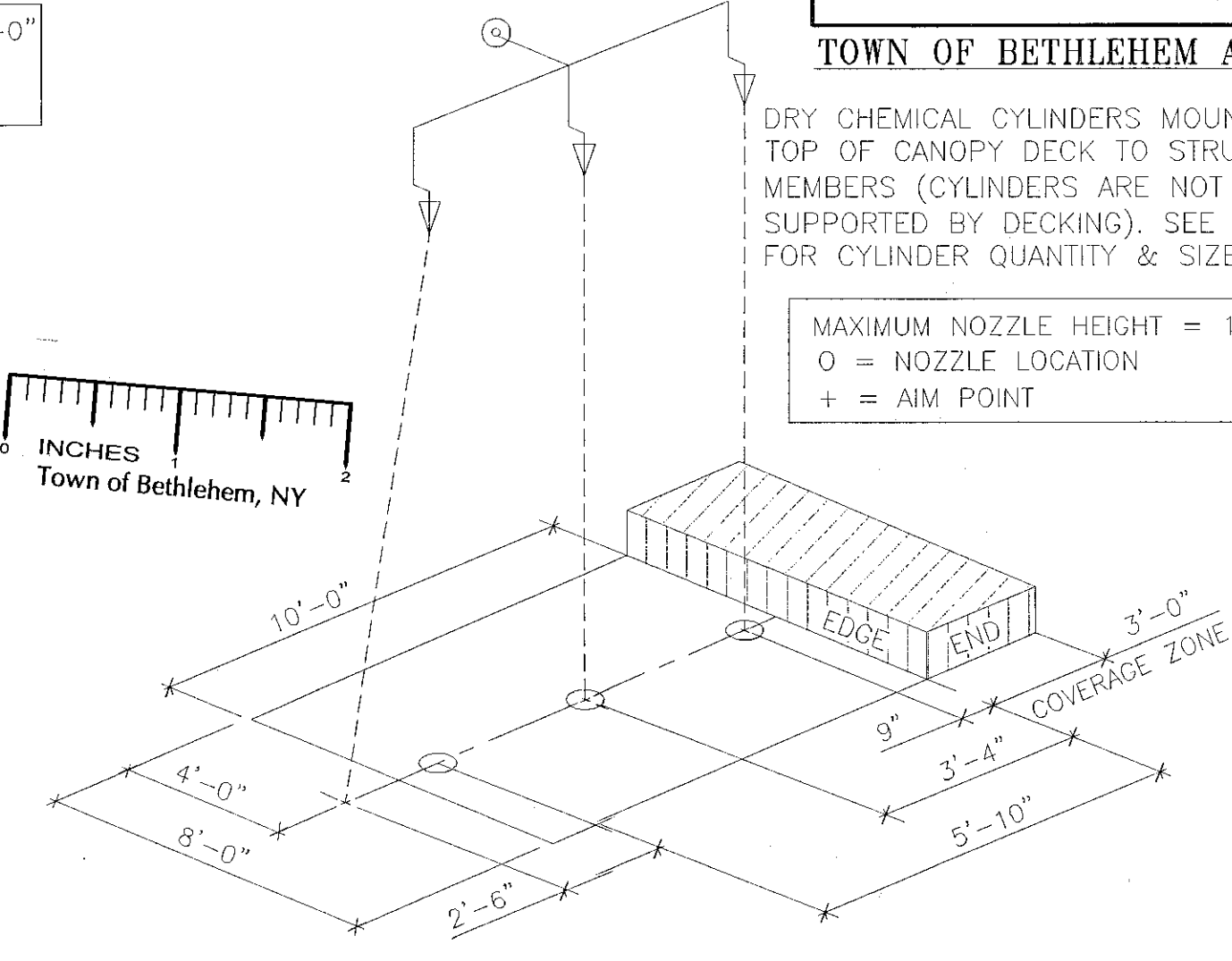
8 NO SMOKING - TURN-OFF ENGINE SIGN

PLANNING BOARD
TOWN OF BETHLEHEM
ALBANY COUNTY, NEW YORK
This Site Plan Approved.
Title: SPA 121 6-6-06
Date: 8/26/06

TOWN OF BETHLEHEM APPROVAL AREA

DRY CHEMICAL CYLINDERS MOUNTED ON TOP OF CANOPY DECK TO STRUCTURAL MEMBERS (CYLINDERS ARE NOT TO BE SUPPORTED BY DECKING). SEE CHART FOR CYLINDER QUANTITY & SIZES.

MAXIMUM NOZZLE HEIGHT = 15'-7"
O = NOZZLE LOCATION
+ = AIM POINT



MAIN ISLAND AREA PROTECTION
SCALE: NONE

- LEGEND**
- 130° HIGH TEMP. AUTOMATIC THERMOSTAT INSTALLED ON 15 FOOT MAXIMUM CENTERS INTERCONNECTED TO FIRE SUPPRESSION SYSTEM, CENTER OF EACH ISLAND ABOVE DISPENSERS. SEE GENERAL NOTE #1.
 - CCTV CAMERA MOUNTED TO OVERHEAD CANOPY COLUMN AT ISLAND WITH CCTV MONITOR(S) LOCATED NEAR CASH REGISTER AT THE TRANSACTION AREA WITHIN THE BUILDING.
 - INTERCOM SPEAKERS AT EACH DISPENSER WITH MASTER CONTROL LOCATED AT CENTRAL CONTROL AREA.
 - OVERHEAD FIRE SUPPRESSION PIPING (SUPPLY).
 - DRY CHEMICAL CYLINDERS AS REQUIRED BY MANUFACTURER OF SUPPRESSION SYSTEM WITH REFERENCE TO U/L APPROVED INSTALLATION AND MAINTENANCE MANUAL.
 - OVERHEAD FIRE SUPPRESSION PIPING (DISTRIBUTION).
 - NOZZLE.
 - NO SMOKING AND TURN OFF ENGINE SIGN.
 - GASOLINE DISPENSER CONTROL CONSOLE EQUIPMENT WITH COMPLETE EQUIPMENT SHUTDOWN EMERGENCY MODE U/L APPROVED.
 - HAND OPERATED 40 BC FIRE EXTINGUISHER.
 - CONTROL CENTER.
 - FIRE SUPPRESSION STRIKE POINT - FOR END OF ISLAND NOZZLE AIM POINTS REFER TO THE UL LISTED PYRO-CHEM, INC. "THE ATTENDANT II", TECHNICAL MANUAL.
 - SUPPORT COLUMN.
 - GASOLINE OR DIESEL DISPENSER U/L APPROVED WITH AUTOMATIC CREDIT CARD READING DEVICE.
 - POSITIVE LIMITING BARRIER AROUND PERIMETER OF SELF SERVE GASOLINE DISPENSING AREA.
 - SELF SERVE GASOLINE DISPENSING AREA.
 - APPROPRIATE INSTRUCTIONS FOR USE AT EACH SELF SERVE DISPENSING NOZZLE.
 - N/A.
 - SAFETY BARRICADE.
 - LIGHTING WITHIN SELF SERVE DISPENSING AREA.
 - CONCRETE MAT SURROUNDING THE DISPENSING AREA SHALL BE MADE AS LEVEL AS POSSIBLE.
 - MANUAL RELEASE LOCATED IN CONTROL CENTER CONVENIENT TO ATTENDANT.
 - REMOTE RELEASE ENGINEERED BY FACTORY, INSTALLED BY AUTHORIZED FIRE SUPPRESSION CONTRACTOR.
 - THE PIPING SHOULD NOT NEGATIVELY IMPACT OR INTERFERE WITH THE FIRE SUPPRESSION SYSTEM EXPELLANT AND ACTIVATION OF THE THERMOSTATS.

ALL DISCHARGE PIPING, TEES, ELBOWS, UNIONS AND FITTINGS THAT ARE PART OF THE DISTRIBUTION SYSTEM OF THE DRY CHEMICAL PRE-ENGINEERED FIRE EXTINGUISHING SYSTEM AT SELF SERVE MOTOR FUEL FACILITIES SHALL BE SCHEDULE 40 BLACK GALVANIZED, STAINLESS STEEL OR CHROME PLATED PIPE AND INSTALLED IN ACCORDANCE WITH MANUFACTURER UL LISTED INSTALLATION MANUAL.

NOTES:

- AT LEAST SEMI-ANNUALLY ALL DISCHARGE NOZZLES, PIPING, DRY CHEMICAL CONTAINERS, HEAT COLLECTORS ETC. SHALL BE INSPECTED BY APPROVED AND CERTIFIED COMPANIES (TYPES-B&D) AND INDIVIDUAL (TYPES-F&H) AND REPORTS OF SUCH INSPECTIONS SUBMITTED TO HEAD OF THE FIRE DEPARTMENT IN ACCORDANCE WITH N.F.P.A. STANDARD #17 OR LATEST REVISION.
- NO FIXED FIRE EXTINGUISHING SYSTEM WILL BE INSTALLED UNTIL AND ONLY AFTER THE DATE OF APPROVAL OF THE SELF-SERVICE MOTOR FUEL FACILITY. THE INSTALLATION SHALL BE TAKEN FROM AND IN ACCORDANCE WITH APPROVED/STAMPED PLANS FROM THE STATE FIRE MARSHAL MARKED SUPPRESSION SYSTEM INSTALLER COPY. VIOLATION OF THIS STATEMENT WILL NULLIFY AND VOID THE APPROVAL OF THIS SELF-SERVICE APPLICATION.
- A STATE FIRE MARSHAL APPROVED SIGN SHALL BE INSTALLED ABOVE EACH PRODUCT DISPENSER ON THE SELF SERVE ISLAND(S).
- EXISTING SELF SERVICE FACILITIES SHALL BE SUBJECTED TO RESUBMITAL AND REVIEW SHOULD ANY OF THE FOLLOWING ITEMS OCCUR:
 - ALTERATIONS TO THE PRE-ENGINEERED FIXED EXTINGUISHING SYSTEM(S) OTHER THAN NORMAL MAINTENANCE PROCEDURES.
 - ALTERATIONS TO THE SELF SERVICE DISPENSING ISLAND ARRANGEMENT(S) RESULTING IN A CHANGE OF HAZARD AREA PROTECTION.
 - ALTERATIONS OR ENVIRONMENTAL CHANGES RESULTING IN THE INABILITY OF A CONSOLE OPERATOR TO CONSTANTLY OBSERVE THE DISPENSING OPERATION. THIS ITEM SHALL BE DETERMINED BY THE LOCAL HEAD OF THE FIRE DEPARTMENT.
 - CHANGES OR ALTERATIONS IN THE METHOD OF DISPENSING MOTOR FUEL.

I, _____ CHIEF OF DEPARTMENT OR HIS DESIGNEE, HAVE REVIEWED THE ATTACHED INFORMATION AND HAVE ACKNOWLEDGMENT OF.
CITY/TOWN: _____
DATE: _____

FIRE SUPPRESSION NOTES:

- FIRE SUPPRESSION SYSTEM AND ASSOCIATED COMPONENTS SHALL BE INSTALLED BY A LICENSED FIRE SUPPRESSION SYSTEM INSTALLER CERTIFIED FOR SUCH INSTALLATION BY THE SYSTEM MANUFACTURER.
- THE PROPOSED FIRE SUPPRESSION SYSTEM AND SYSTEM COMPONENTS SHALL BE INSTALLED IN ACCORDANCE WITH ALL APPLICABLE CODES AND REGULATIONS. INSTALLATION OF THIS SYSTEM SHALL CONFORM TO THE REQUIREMENTS OF THE SYSTEM MANUFACTURER, THE TOWN OF BETHLEHEM FIRE DEPARTMENT, AND ALSO THE NEW YORK STATE FIRE MARSHAL'S OFFICE REQUIREMENTS.
- SYSTEM INSTALLER IS RESPONSIBLE FOR REVIEWING THIS PLAN FOR COMPLIANCE WITH THE REQUIREMENTS OF THE SYSTEM MANUFACTURER PRIOR TO INSTALLATION. IT IS THE INSTALLER'S RESPONSIBILITY TO NOTIFY THE ENGINEER OF RECORD IMMEDIATELY OF ANY CONFLICTS. FAILURE TO NOTIFY THE ENGINEER OF RECORD SHALL CONSTITUTE ACCEPTANCE OF FULL RESPONSIBILITY BY THE CONTRACTOR TO COMPLETE THE SCOPE OF WORK AS DEFINED BY THE DRAWINGS AND IN FULL CONFORMANCE WITH ALL APPLICABLE CODES AND REQUIREMENTS.
- THIS PLAN WAS PREPARED USING THE SYSTEM MANUFACTURER'S GUIDELINES AND IS INTENDED FOR GENERAL LAYOUT PURPOSES ONLY.

FOR FIRE MARSHAL USE

RECEIVED
AUG 28 2006
TOWN OF BETHLEHEM

INSTALLER:	CONTRACTOR:
BOHLER ENGINEERING, P.C. • CIVIL & CONSULTING ENGINEERS • PROJECT MANAGERS • ENVIRONMENTAL & SITE PLANNERS • MUNICIPAL ENGINEERS • NORTH WALES, PENNSYLVANIA (215) 393-8300 VALLEY STREAM, NEW YORK (516) 872-2000 STERLING, VIRGINIA (703) 709-9500 WATCHUNG, NEW JERSEY (908) 668-8300	
PROJECT: CUMBERLAND FARMS, INC. PROP. FIRE SUPPRESSION SYSTEM FOR DIESEL ISLANDS 68 ROUTE 9H & NYS RTE 32 TOWN OF BETHLEHEM, ALBANY COUNTY, NEW YORK	
TITLE: PYRO-CHEM, INC. "THE ATTENDANT II" GASOLINE FIRE SUPPRESSION SYSTEM	
SCALE: AS NOTED DATE: 04/13/05 DRAWN BY: JAG PROJECT No: B010587 CHECKED BY: SPD CAD L.D. #: B040587s1(diesel)	SHEET No: 16 OF 16 REV. No: 3
PROFESSIONAL ENGINEER MASSACHUSETTS LICENSE No. 36424 NEW HAMPSHIRE LICENSE No. 9308 MAINE LICENSE No. 8408 VERMONT LICENSE No. 7735	
S.P. DECOURSEY	
CONSTRUCTION CHECK DATE	