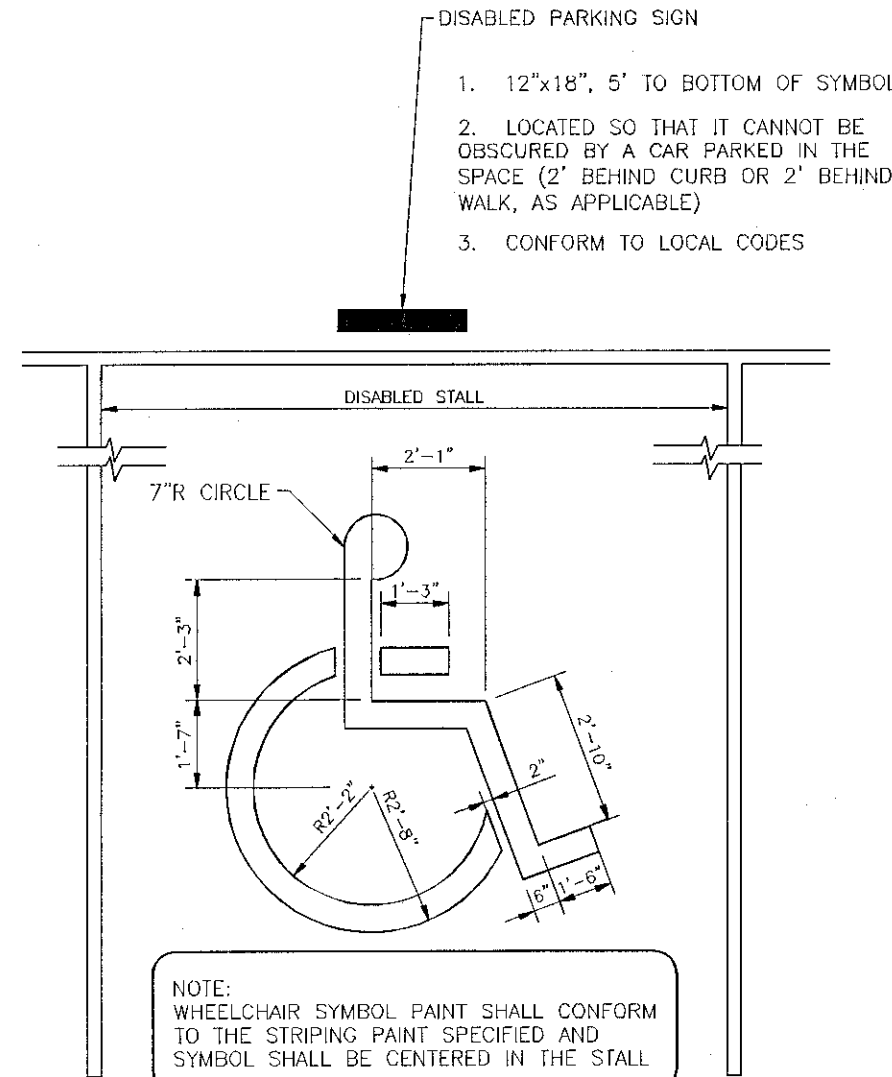


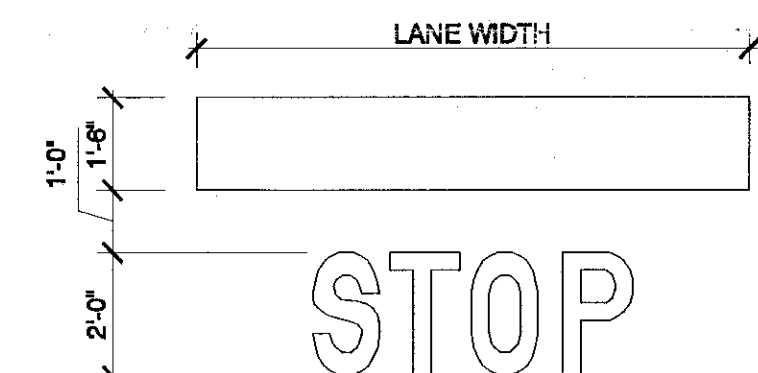
PROPOSED SIGNAGE TABLE				
SIGN SCHEDULE				
SYM	DESCRIPTION	SIGN AREA	QUAN.	TOTAL AREA
(A)	PROPOSED WALL SIGN	16.70 S.F.	1	16.70 S.F.
(B)	DUNKIN DONUTS DIRECTIONAL SIGNS	2.98 S.F.	2	5.96 S.F.
(C)	APPROVED/EXISTING MONUMENT	32.0 S.F.	1	32.0 S.F.
(D)	EXISTING WALL SIGN	12.57 S.F.	1	12.57 S.F.
(E)	"OPEN/FULL" SIGN TO BE MOUNTED UNDER "DRIVE-THRU" DIRECTIONAL SIGN	N/A	N/A	N/A
		PROPOSED TOTAL AREA: 67.23 S.F.		



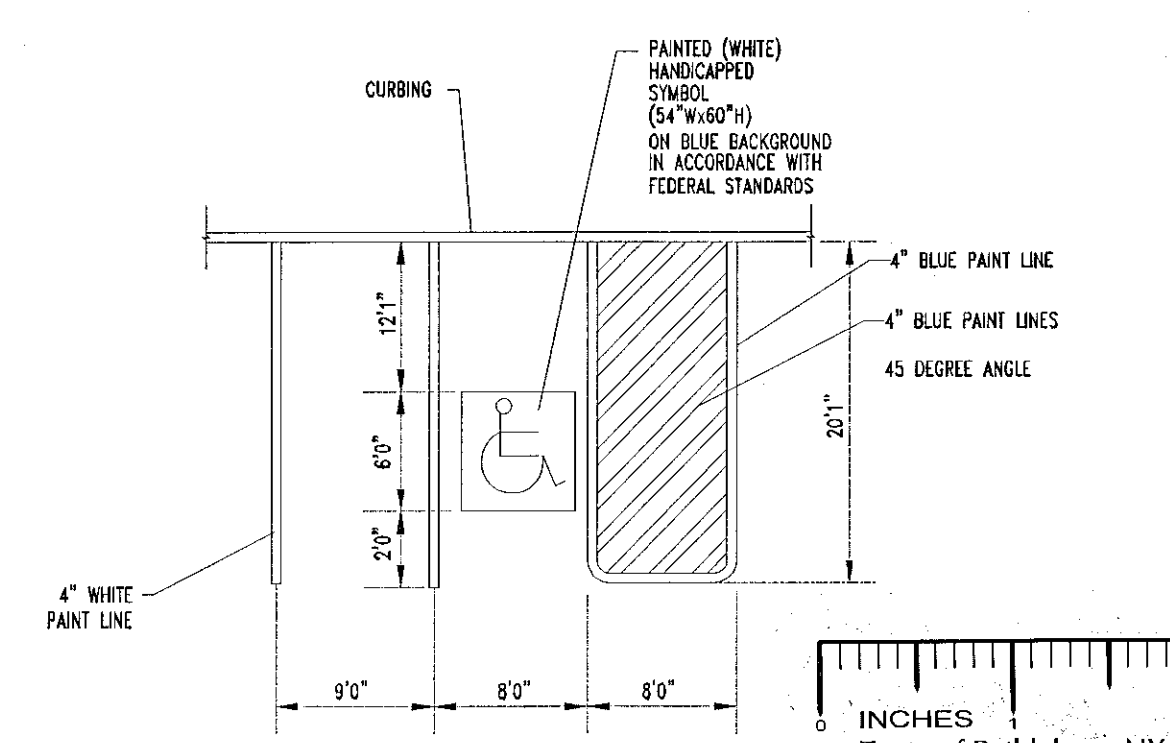
DISABLED PARKING SPACE
PAINTING DETAIL
NOT TO SCALE



12" X 18"
NO PARKING SIGN (P1-1C)
NOT TO SCALE



"STOP" BAR DETAIL
NOT TO SCALE

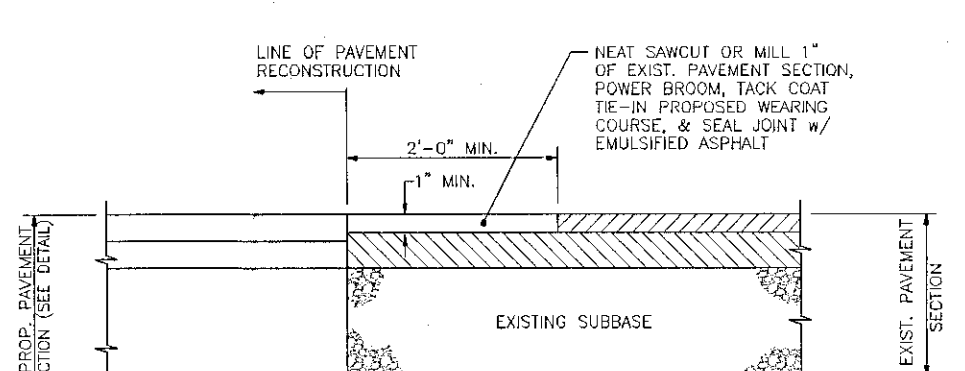
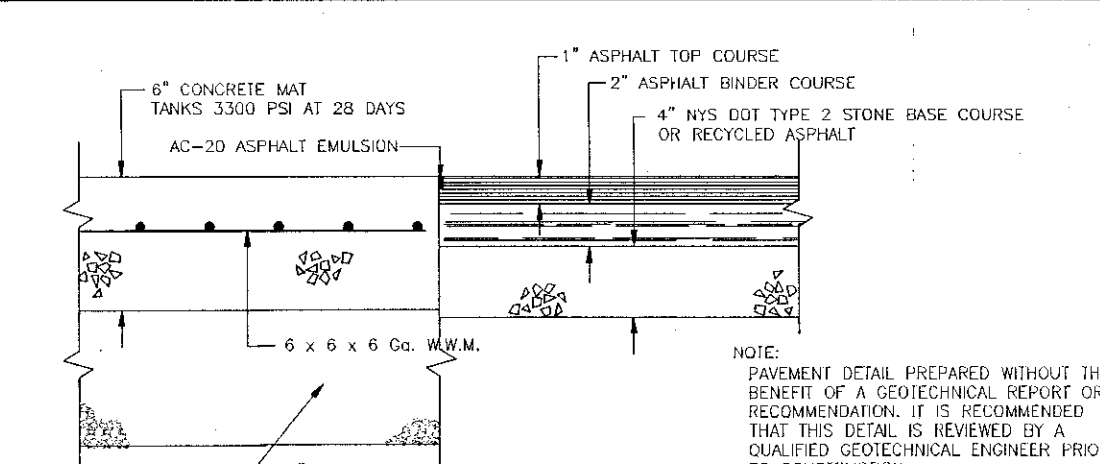


NOTES:

1. SEE SITE PLAN FOR ACCESSIBLE SPACE LOCATION AND DIMENSIONS
2. PROVIDE 2 COATS OF PAINT ON ALL SURFACES

HANDICAPPED STALL MARKING

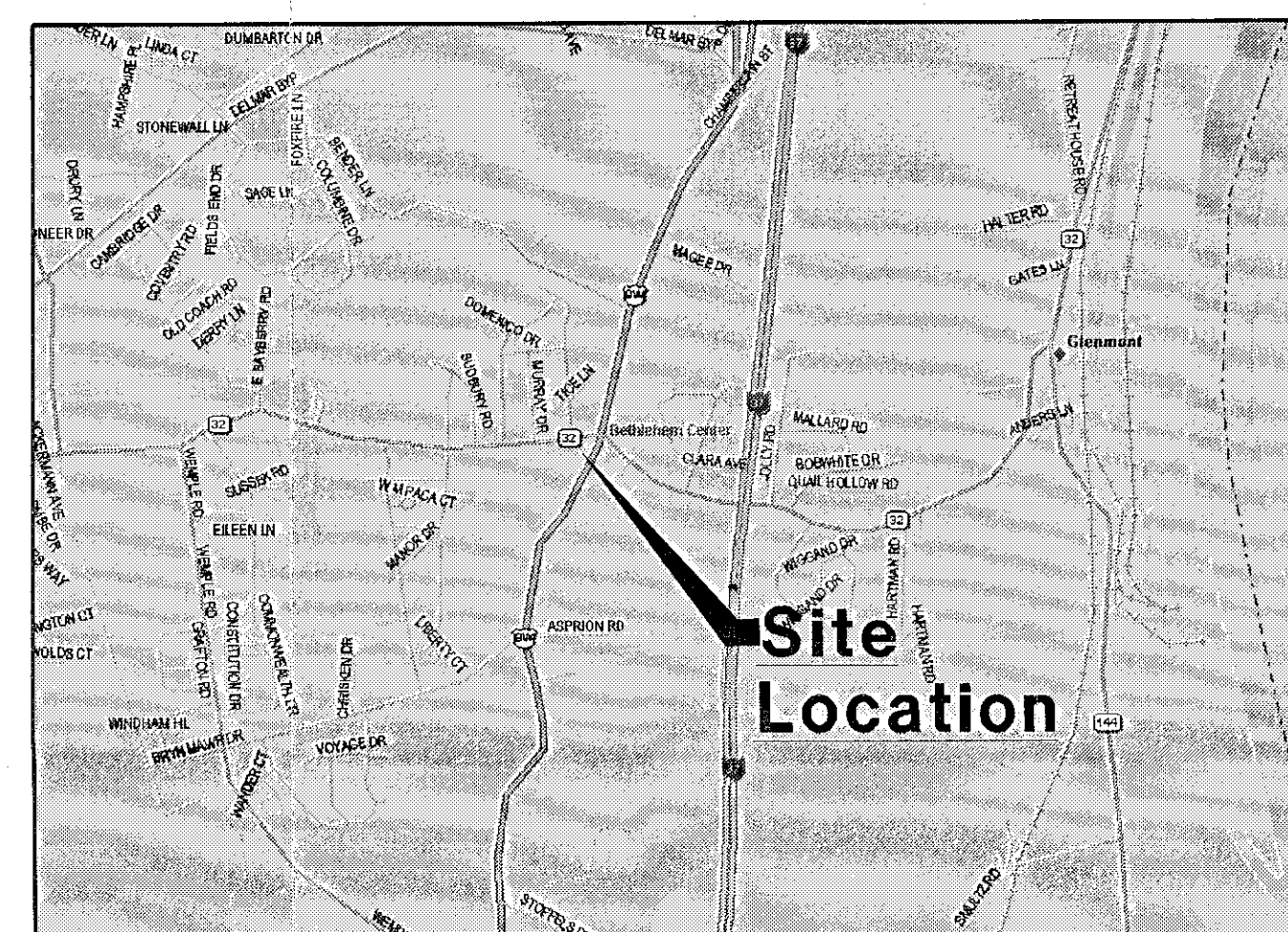
NOT TO SCALE

PAVEMENT TIE-IN DETAIL
NOT TO SCALE

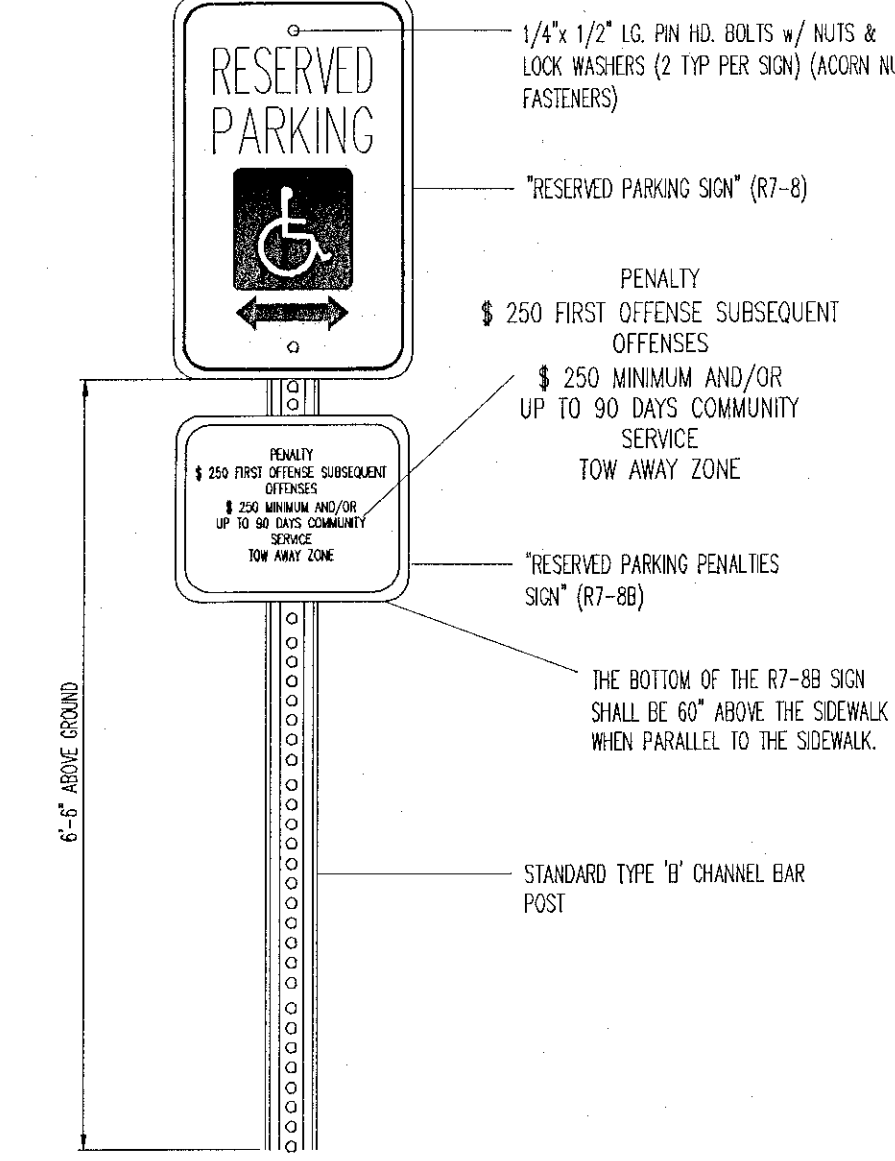
CONCRETE & PAVING DETAIL

GENERAL NOTES

1. THIS PLAN REFERENCES DRAWINGS BY: CAPITAL ARCHITECTURE
37 STAVIS AVENUE
ALBANY, NY 12205
2. THIS CONCEPT WAS PREPARED STRICTLY BASED UPON INFORMATION IDENTIFIED ABOVE.
3. THE CONCEPT REPRESENTED HEREIN IDENTIFIES A DESIGN CONCEPT RESULTING FROM LAYOUT INFORMATION IDENTIFIED BY OWNER COUPLED WITH A PRELIMINARY REVIEW OF ZONING AND LAND DEVELOPMENT REQUIREMENTS AND ISSUES. THE FEASIBILITY WITH RESPECT TO OBTAINING LOCAL, COUNTY, STATE, AND OTHER APPLICABLE AGENCY REVIEW AND CAN ONLY BE ASSESSED AFTER FURTHER EXAMINATION AND VERIFICATION OF SAME REQUIREMENTS AND PROCUREMENT OF JURISDICTIONAL APPROVALS.
4. THE CONCEPTUAL PLAN IS PREPARED FOR CONCEPTUAL PRESENTATION PURPOSES ONLY AND IS NOT INTENDED FOR UTILIZATION AS A ZONING AND/OR CONSTRUCTION DOCUMENT. THE EXISTING CONDITIONS SHOWN HEREIN ARE BASED UPON INFORMATION THAT WAS SUPPLIED TO OUR OFFICE AT THE TIME OF PLAN PREPARATION AND MAY BE SUBJECT TO CHANGE UPON PERFORMANCE OF THE DESIGN.

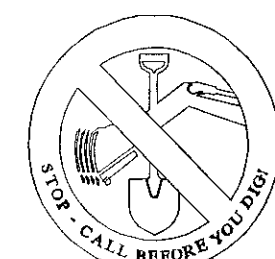


SITE LOCATION MAP
SCALE: NTS



RESERVED PARKING SPACE
& PENALTIES SIGNS

NOTE: THIS PLAN IS BASED ON
PRELIMINARY BACKGROUND DATA
(BY OTHERS) AND LIMITED DUE DILIGENCE.



THE STATE OF NEW YORK REQUIRES NOTIFICATION BY EXCAVATOR
DESIGNERS, OR ANY PERSON PREPARING TO DISTURB THE EARTH
SURFACE ANYWHERE IN THE STATE.

ANY PERSON IS PROHIBITED FROM ALTERING ANYTHING ON THESE DRAWINGS AND/OR THE ACCOMPANYING SPECIFICATIONS, UNLESS IT IS UNDER THE WRITTEN DIRECTION OF A LICENSED PROFESSIONAL ENGINEER OF THE FIRM. IN THE EVENT SUCH ALTERATIONS ARE MADE, THE PROFESSIONAL ENGINEER OF THE FIRM MUST SIGN, SEAL, DATE, AND DESCRIBE THE FULL EXTENT OF THE ALTERATION ON THE DRAWINGS AND/OR IN THE SPECIFICATIONS. (MYS EDUCATION LAW SECTION 7209-2)

NOTE:
PAVEMENT DETAIL PREPARED WITHOUT THE
BENEFIT OF A GEOTECHNICAL REPORT OR
RECOMMENDATION, IT IS RECOMMENDED
THAT THIS DETAIL IS REVIEWED BY A
QUALIFIED GEOTECHNICAL ENGINEER PRIOR
TO CONSTRUCTION.

NOTE:
PAVEMENT DETAIL PREPARED WITHOUT THE
BENEFIT OF A GEOTECHNICAL REPORT OR
RECOMMENDATION. IT IS RECOMMENDED
THAT THIS DETAIL IS REVIEWED BY A
QUALIFIED GEOTECHNICAL ENGINEER PRIOR


PLANNING BOARD
TOWN OF BETHLEHEM
ALBANY COUNTY, NEW YORK

This Site Plan Approved.

Paul J. Mathews
Title Chairman
SPR 136 A-1

Date 9/30/08

TOWN OF BETHLEHEM APPROVAL AREA



BOHLER

ENGINEERING

VIL & CONSULTING ENGINEERS

SURVEYORS

PROJECT MANAGERS

ENVIRONMENTAL CONSULTANTS

LANDSCAPE ARCHITECTS

CORPORATE OFFICE:

♦ WARREN, NJ

OFFICES

- ♦ SOUTHBOURNE, MA
- ♦ ALBANY, NY
- ♦ PIERMONT, NY
- ♦ PORTLAND, ME
- ♦ CHALFONTE, PA
- ♦ CENTER VALLEY, PA

REVISIONS:			
REV:	DATE:	COMMENT:	BY:
1	9/23/08	"OPEN/FULL" SIGN ADDED	AML
3	9/25/08	REVISED PER TOWN PLANNING COMMENTS	AML
2	9/13/08	SIGN TABLE ADDED	BHR
1	9/17/08	REVISED PER TOWN PLANNING COMMENTS	ECR

NOT APPROVED FOR
CONSTRUCTION

PROJECT No.: B080133
DRAWN BY: ECR
CHECKED BY: CEB
DATE: 4/16/08
SCALE: AS NOTED
CAD I.D.: SITE-REV-4


PROJECT:

**PROPOSED
DRIVE-THRU**

FOR

**Frank Hessari
(Prestige
Petroleum)**

N.Y.S ROUTE 9W
TOWN OF GLENMONT
ALBANY COUNTY

 **BOHLER**
ENGINEERING

5 COMPUTER DRIVE WEST
ALBANY, NY 12205
PH: (518) 438-9900
FX: (518) 438-0800

W.D. GOEBEL

PROFESSIONAL ENGINEER
NEW YORK LICENSE No. 071284
MASSACHUSETTS LICENSE No. 42644
CONNECTICUT LICENSE No. 21854
NEW HAMPSHIRE LICENSE No. 10280
MAINE LICENSE No. 9490

SHEET TITLE:	
DRIVE-THRU IMPROVEMENT PLAN / DETAILS	
SHEET NUMBER:	
1	
OF 1	
REVISION 1	

SPA 136 A1