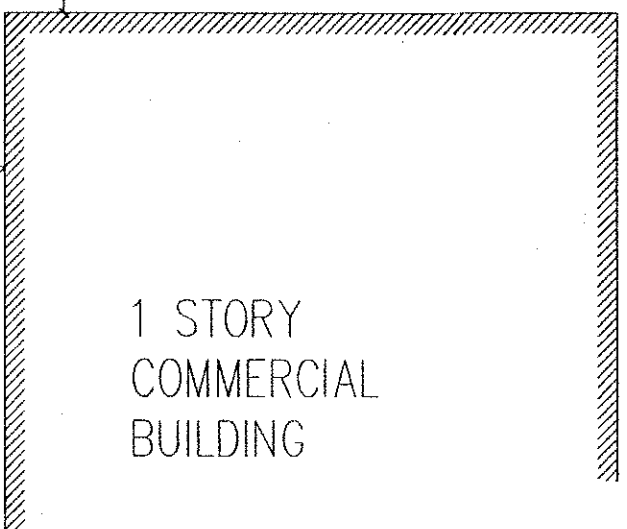
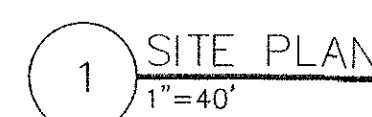
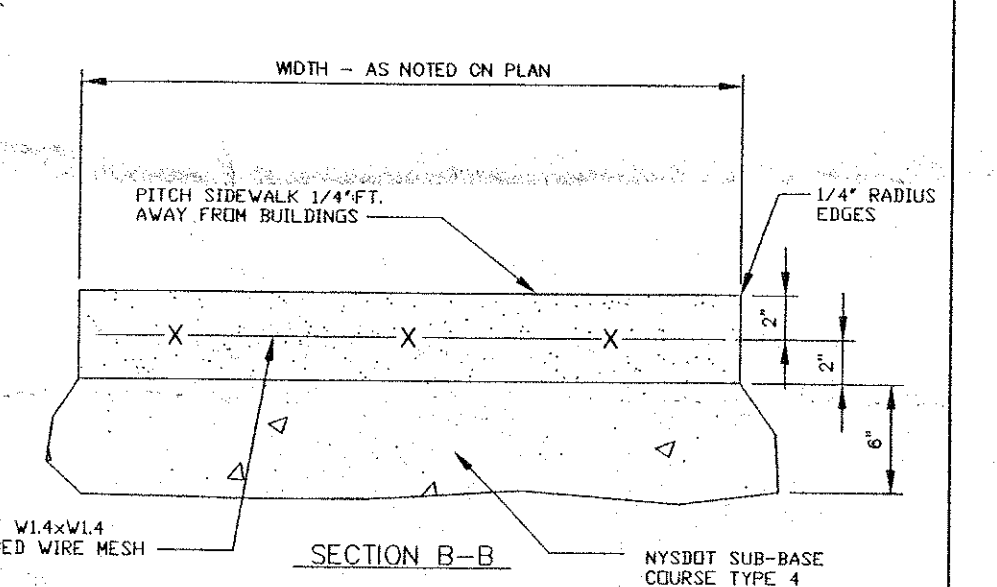
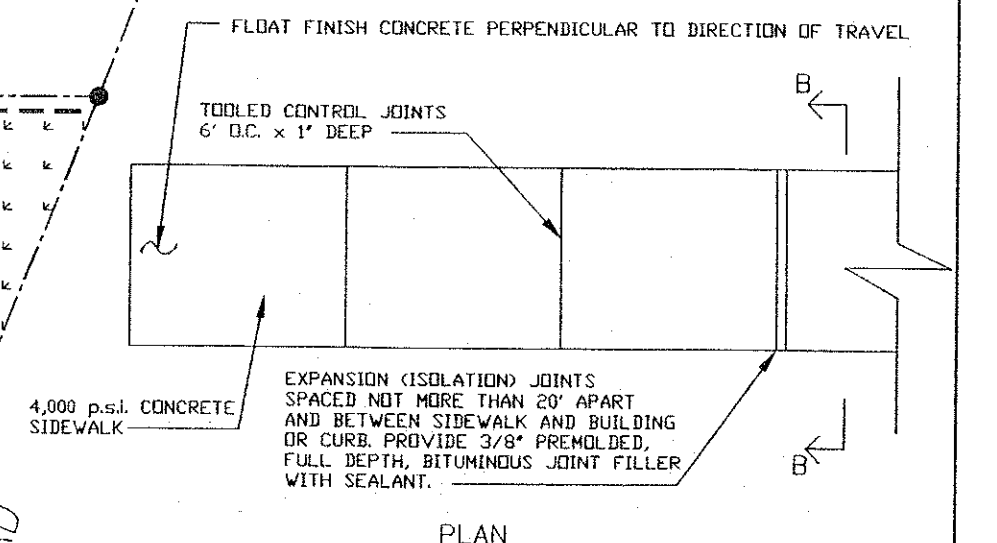
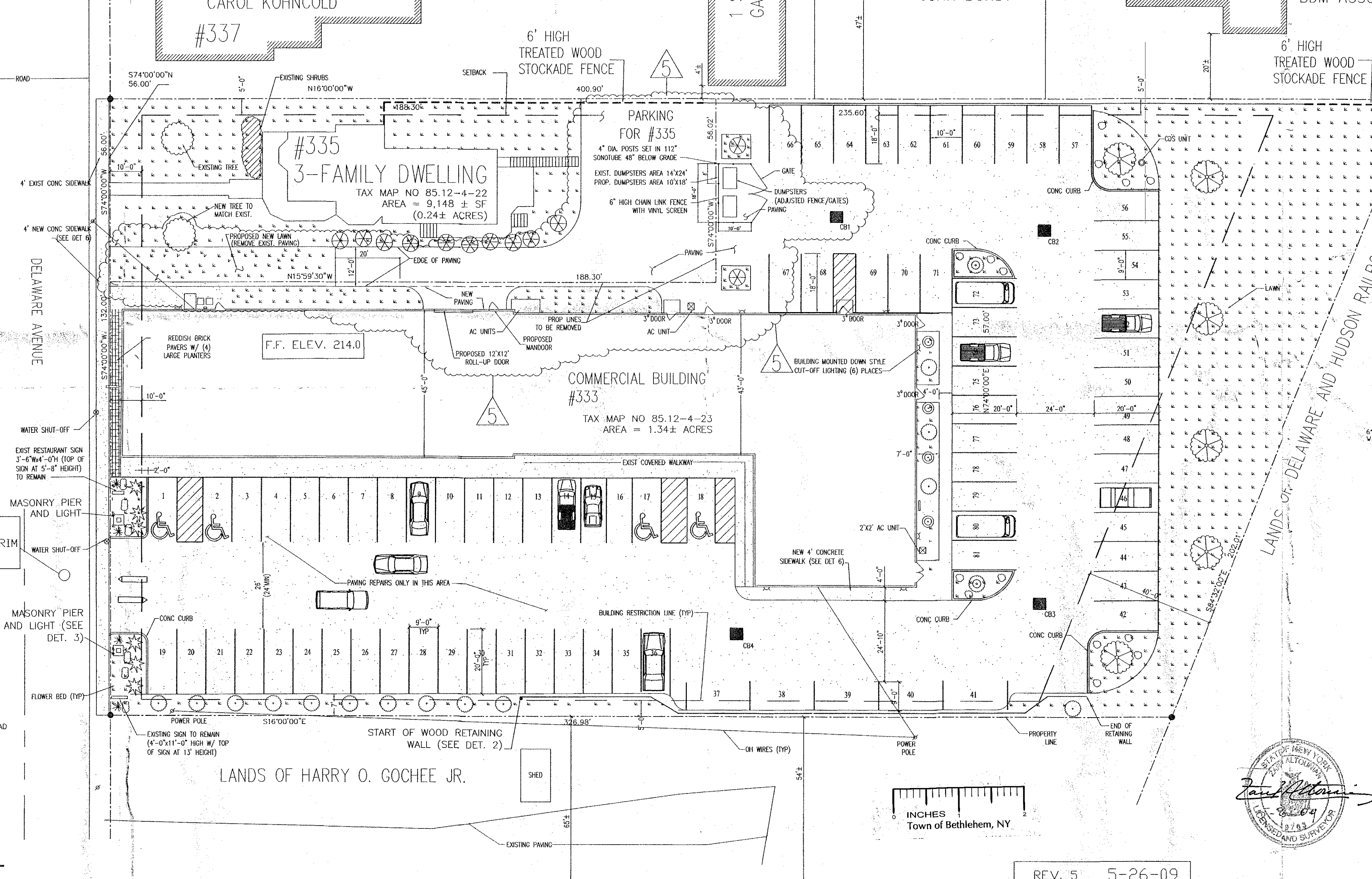
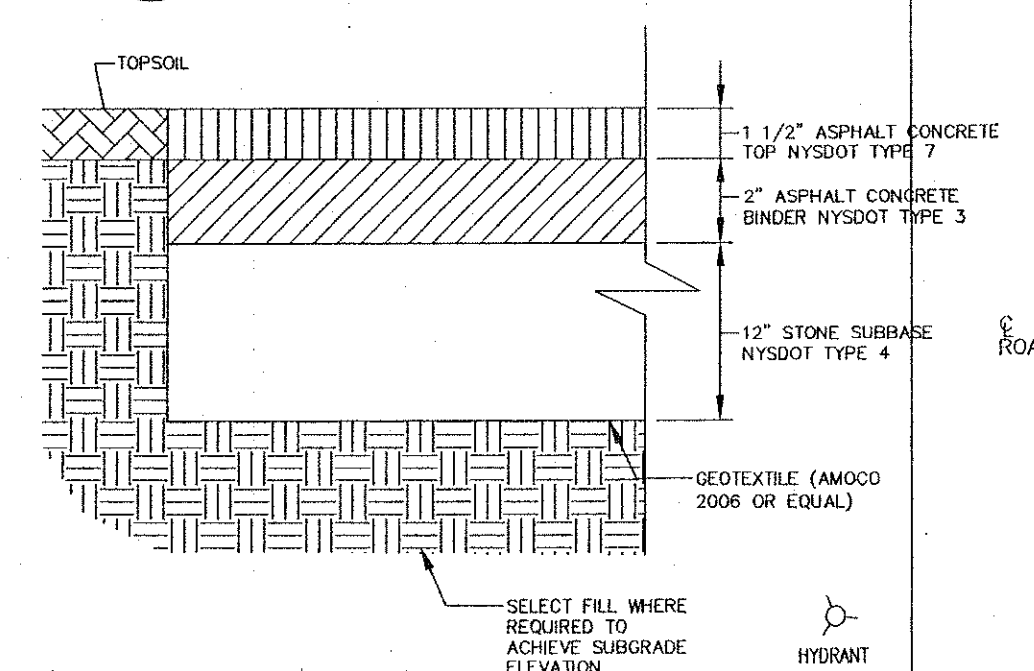
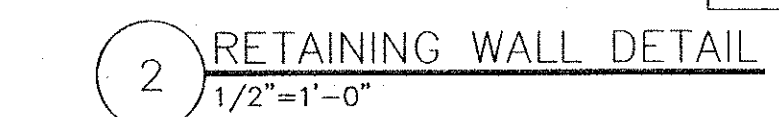
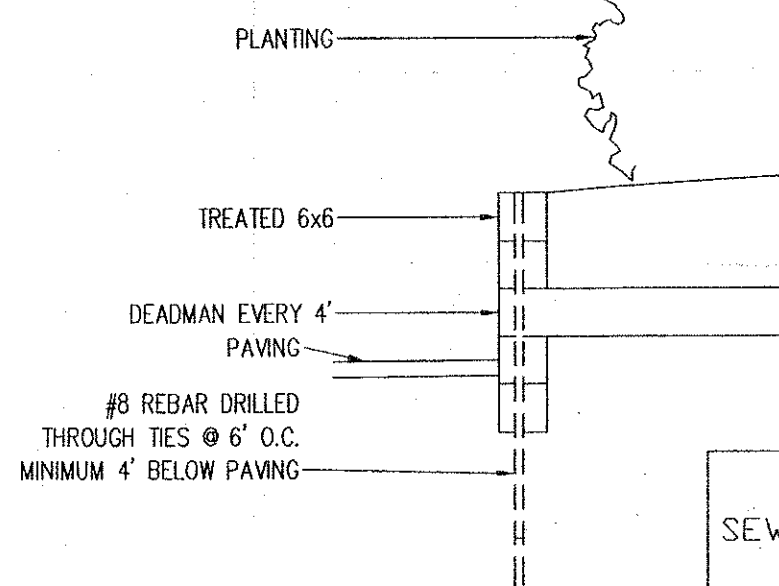
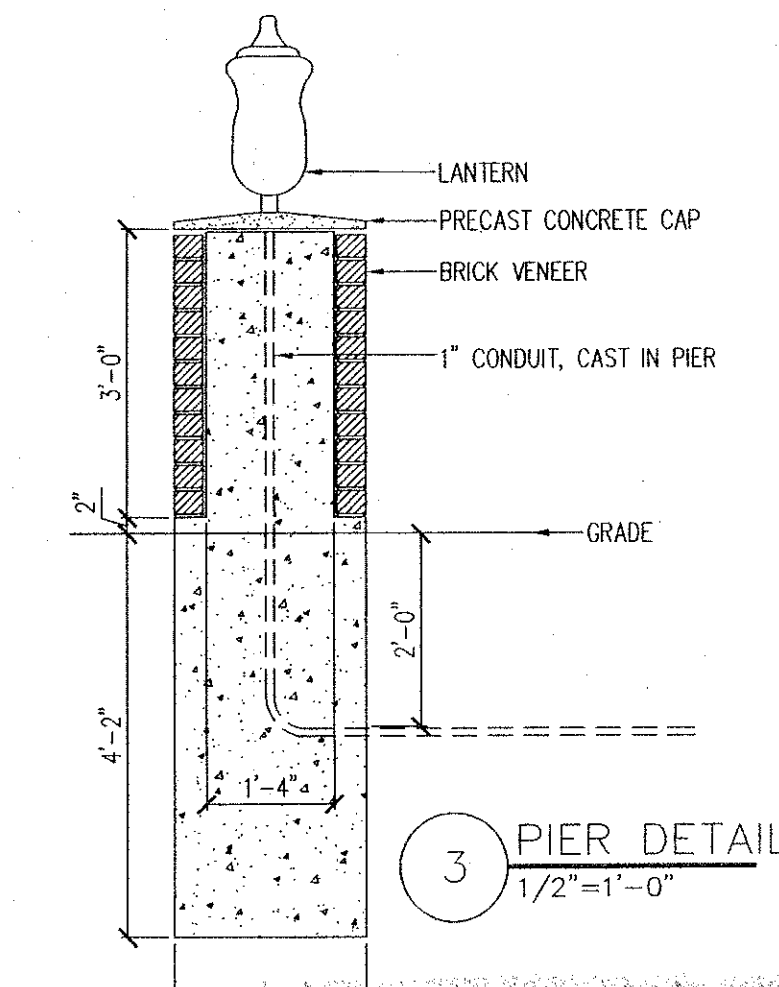
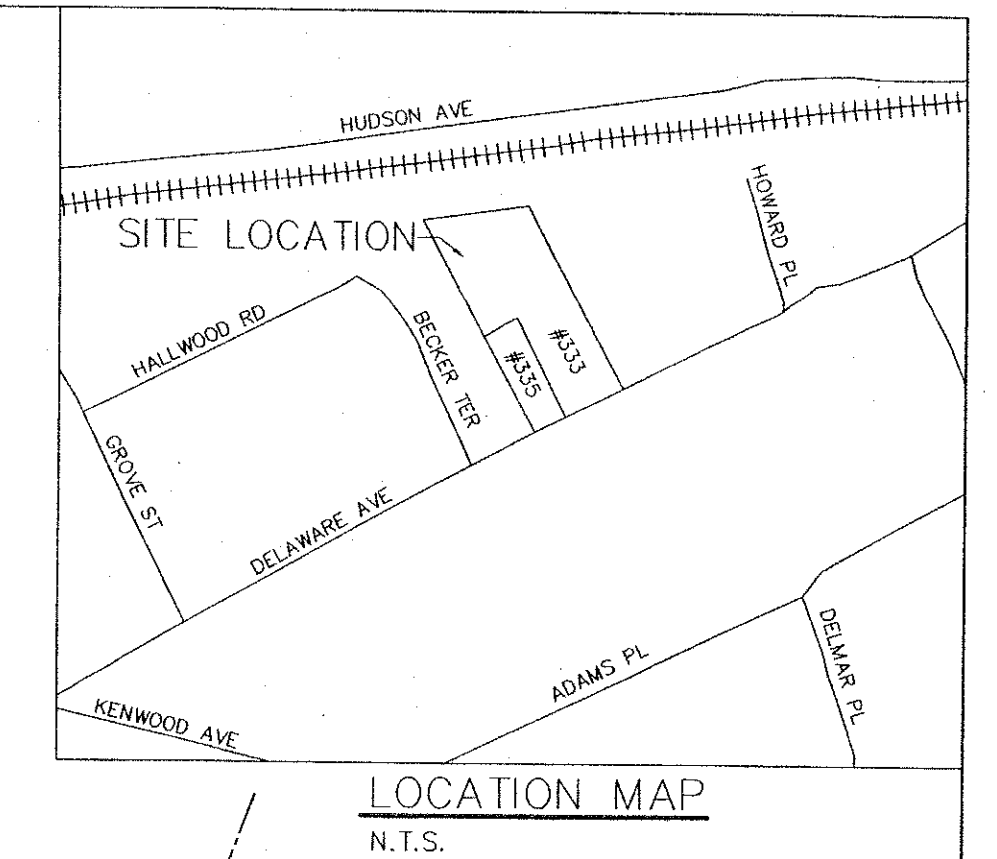


PARKING REQUIREMENTS:
 RETAIL - 11,800 S.F. / 200 S.F. = 59 SPACES
 OFFICE - 3,800 S.F. / 200 S.F. = 19 SPACES
 RESTAURANT - 1,200 S.F. (30 SEATS) / 2 = 15 SPACES
 TOTAL REQUIRED = 93 SPACES / TOTAL PROVIDED = 81 SPACES



REV. 5	5-26-09
REV. 4	8-14-08
PROPOSED FENCE REVISION	
REV. 3	2-12-08
REVISED PER TOWN COMMENTS	
REV. 2	12-30-07
REVISED PER TOWN COMMENTS	
REV. 1	11-14-07
REVISED PER TOWN COMMENTS	

DRAWN BY:	ERIN THOMAS
CHK'D BY:	A. TRIMACHI
ENG. ZALTONIA	
DATE:	08-3-07

TITLE SITE PLAN AMENDMENT TO INSTALL 12'X12' ROLL-UP DOOR	
MADE FOR HADI & HAVZI IPEK	
LOCATION 333-335 DELAWARE AVE TOWN OF BETHLEHEM ALBANY CO., N.Y.	DWG L 1 REV. 0

FB
file
copy