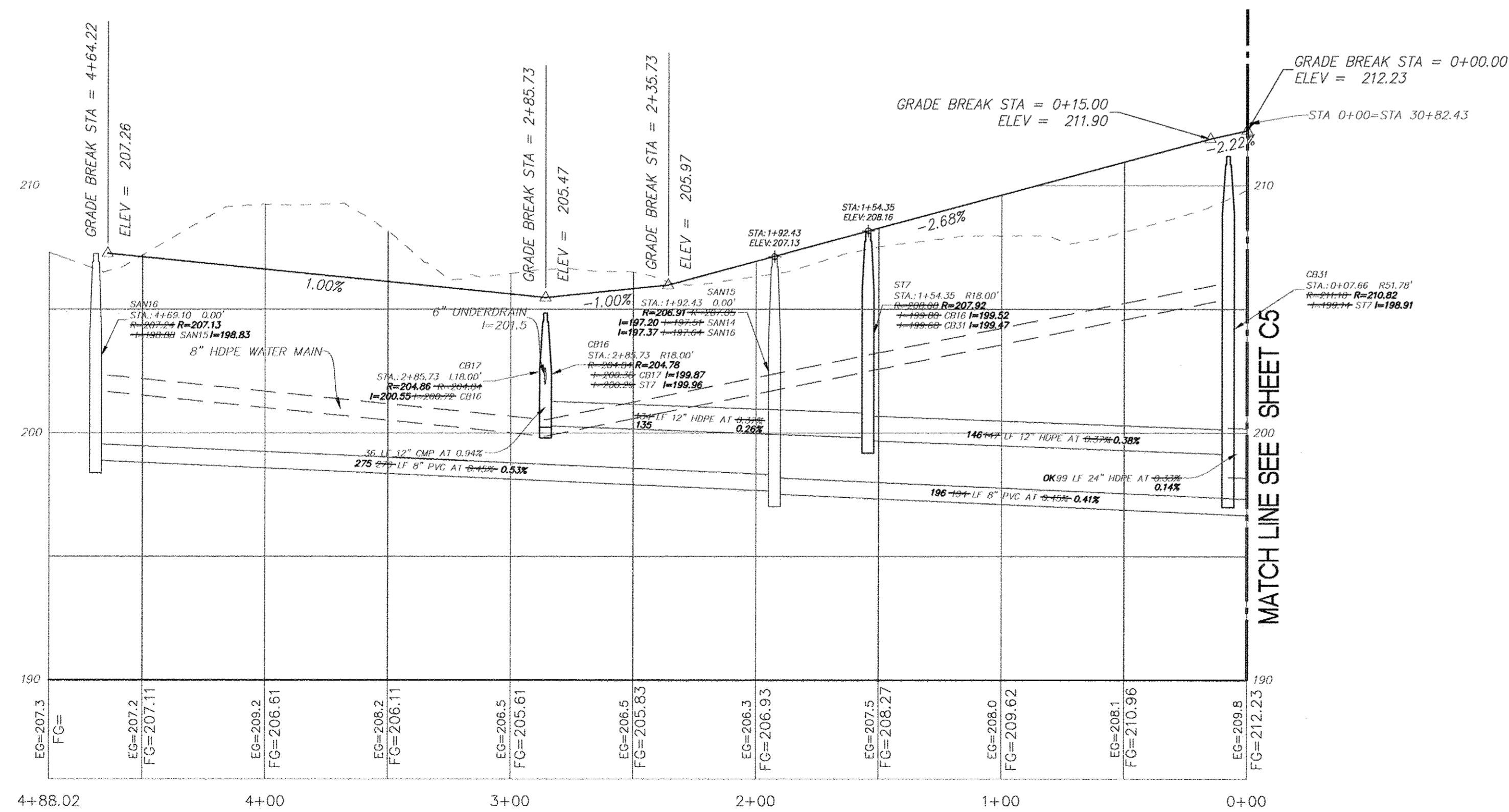


MATCH LINE SEE SHEET C5

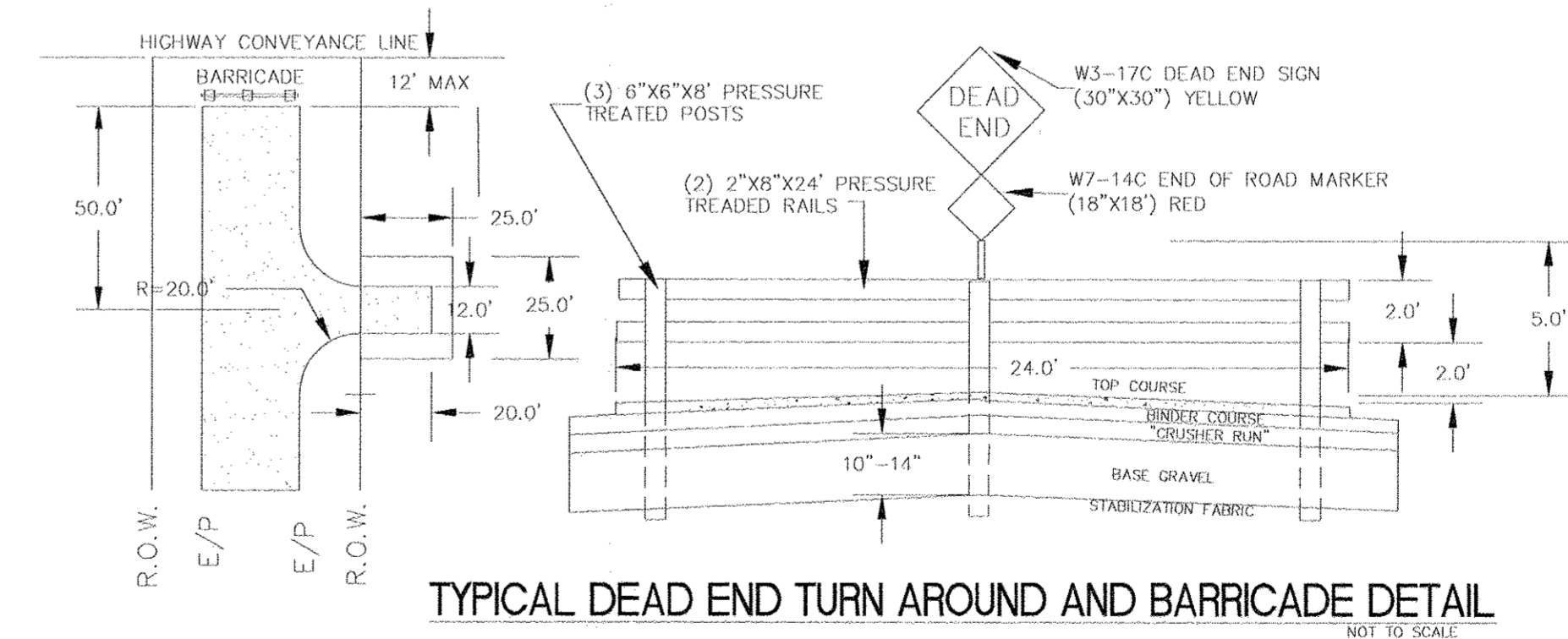
LEGEND	
	EXISTING CONTOURS
	EXISTING IMPROVEMENTS TO BE REMOVED
	PROPOSED CONTOURS
	PROPOSED PAVEMENT
	PROPOSED PAVEMENT MARKINGS
	PROPOSED CONCRETE WALK
	PROPOSED CATCH BASIN
	PROPOSED MANHOLE
	PROPOSED HYDRANT & VALVE
	PROPOSED SANITARY SEWER (GRAVITY)
	PROPOSED WATER MAIN
	PROPOSED STORM SEWER
	PROPOSED SANITARY SEWER (FORCE MAIN)
	PROPERTY LINE
	UTILITY EASEMENT
	PROPOSED LIGHT POLE
	PROPOSED DECORATIVE METAL FENCE
	PROPOSED SHRUB OR TREE
	EXISTING WETLAND
	PROPOSED GAS MAIN BY NATIONAL GRID CONTRACTOR TO INCLUDE EXCAVATION IN BID PRICE
	PROPOSED UNDERGROUND ELECTRIC BY NATIONAL GRID CONTRACTOR TO INCLUDE EXCAVATION IN BID PRICE

NOTE: ASPHALT SPOT ELEVATIONS SHOWN HEREON ARE TOP OF ASPHALT BINDER ELEVATION.

VISTA BOULEVARD PLAN

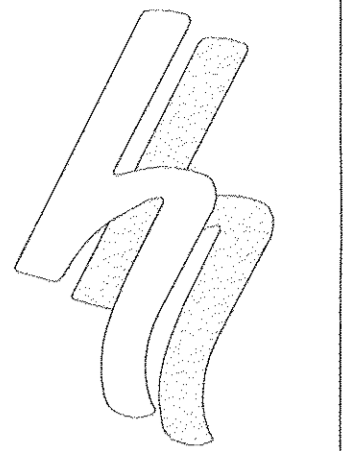


VISTA BOULEVARD PROFILE



NOTE: RECORD INFORMATION SHOWN HEREON OBTAINED BY INGALLS & ASSOCIATES LLP FROM A FIELD SURVEY CONDUCTED AUGUST 8, 2012 THROUGH AUGUST 13, AND REFLECTS CONDITIONS EXISTING AT THOSE OCCASIONS.

SANITARY SEWER, STORM SEWER AND HYDRANT & WATER VALVE TIE RECORD PLAN (LAST REVISED 10-16-12)



HERSHBERG & HERSHBERG

Consulting Engineers and Land Surveyors
18 Locust Street
Albany, New York 12203

ALTERATION OF THIS DOCUMENT EXCEPT BY A LICENSED PROFESSIONAL ENGINEER OR LAND SURVEYOR, IS ILLEGAL.

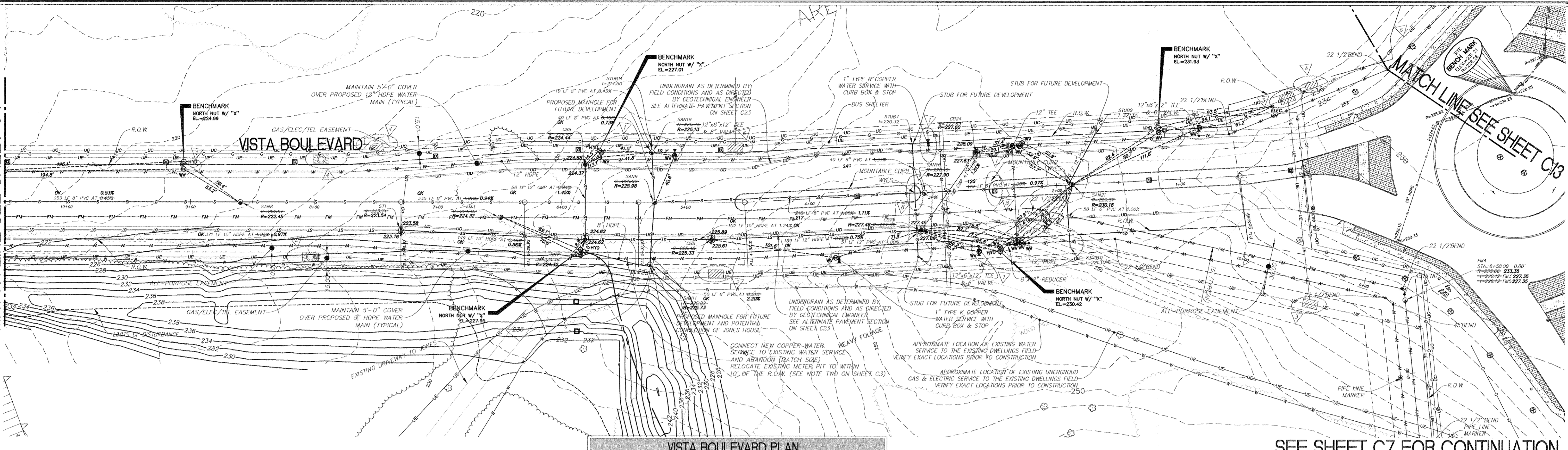
DATE	REVISIONS
5/11/11	GAS & ELEC
4/19/12	COMMUNICATION LINES
4/12/12	COMMUNICATIONS

PUBLIC INFRASTRUCTURE CONSTRUCTION
VISTA TECHNOLOGY CAMPUS
TOWN OF BETHLEHEM
ALBANY COUNTY, STATE OF NEW YORK

FILE: 110027
SCALE: 1/4"=1'-0" V.T.=4"
CHK: DRH
DATE: 2/18/11
BY: WM
110027-1.dwg

MATCH LINE SEE SHEET C4

MATCH LINE SEE SHEET C4

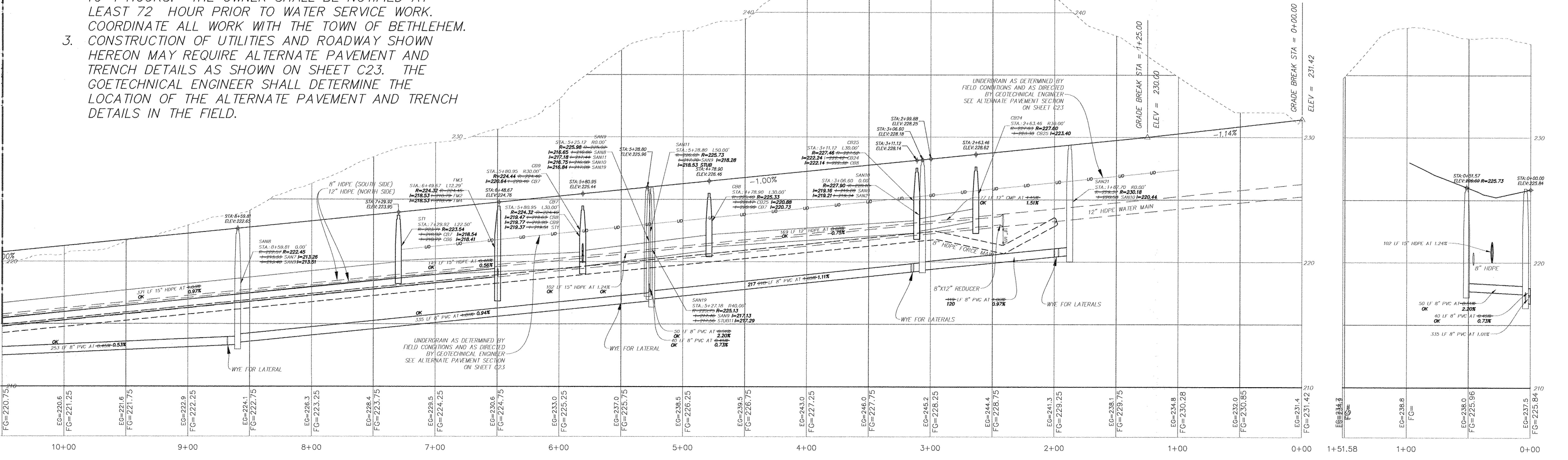


VISTA BOULEVARD PLAN

NOTE: ASPHALT SPOT ELEVATIONS SHOWN HEREON ARE TOP OF ASPHALT BINDER ELEVATION.

SEE SHEET C7 FOR CONTINUATION

- NOTE:
- CONTRACTOR SHALL INSTALL BENDS ALONG WATER MAINS AND FORCE MAINS NECESSARY TO MAINTAIN LOCATION OF UTILITY AS SHOWN ON THE PLAN.
 - THE TIME FRAME FOR POTENTIAL WATER SERVICE INTERRUPTION TO THE JONES HOUSE SHALL BE LIMITED TO 4 HOURS. THE OWNER SHALL BE NOTIFIED AT LEAST 72 HOUR PRIOR TO WATER SERVICE WORK. COORDINATE ALL WORK WITH THE TOWN OF BETHLEHEM. HEREON MAY REQUIRE ALTERNATE PAVEMENT AND TRENCH DETAILS AS SHOWN ON SHEET C23. THE GEOTECHNICAL ENGINEER SHALL DETERMINE THE LOCATION OF THE ALTERNATE PAVEMENT AND TRENCH DETAILS IN THE FIELD.
 - CONSTRUCTION OF UTILITIES AND ROADWAY SHOWN HEREON MAY REQUIRE ALTERNATE PAVEMENT AND TRENCH DETAILS AS SHOWN ON SHEET C23. THE GEOTECHNICAL ENGINEER SHALL DETERMINE THE LOCATION OF THE ALTERNATE PAVEMENT AND TRENCH DETAILS IN THE FIELD.



VISTA BOULEVARD PROFILE

SEWER TO JONES HOUSE PROFILE

SANITARY SEWER, STORM SEWER AND HYDRANT & WATER VALVE TIE RECORD PLAN (LAST REVISED 10-16-12)

NOTE: RECORD INFORMATION SHOWN HEREON OBTAINED BY INGALLS & ASSOCIATES LLP FROM A FIELD SURVEY CONDUCTED AUGUST 8, 2012 THROUGH AUGUST 13, 2012 AND REFLECTS CONDITIONS EXISTING AT THOSE OCCASIONS.

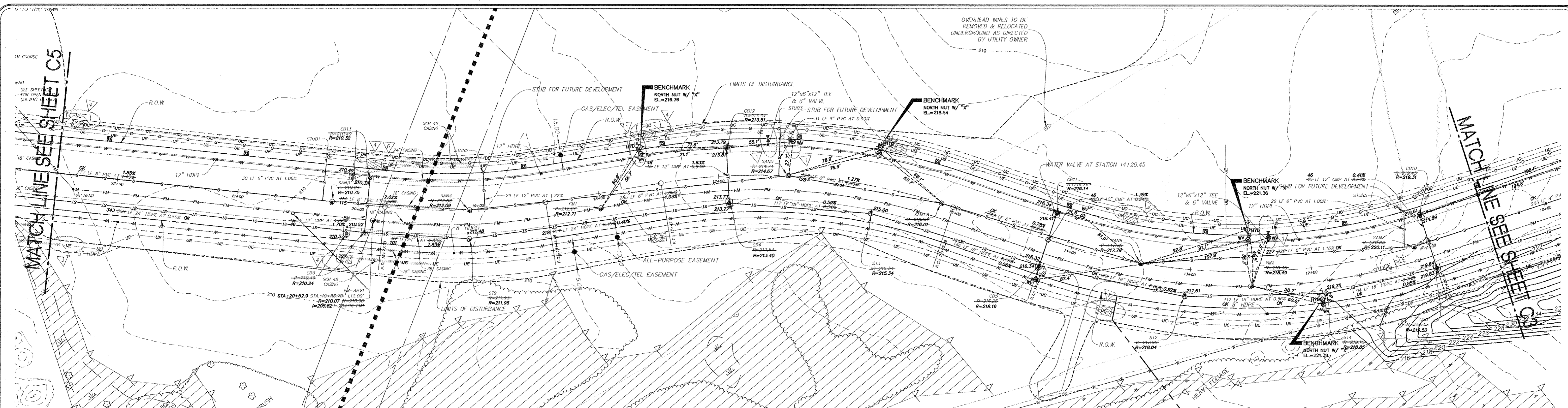
HERSHBERG & HERSHBERG
Consulting Engineers and Land Surveyors
18 Locust Street
Albany, New York 12203

ALTERATION OF THIS DOCUMENT EXCEPT BY A LICENSED PROFESSIONAL ENGINEER OR LAND SURVEYOR, IS ILLEGAL.

DATE	REVISIONS
11/1/11	ELECTRIC SWITCH GEARS
12/9/11	ELECTRIC SWITCH GEARS
4/12/12	COMMUNICATIONS
4/17/12	ELECTRIC SWITCH GEAR STA 5+00
5/10/12	ELECTRIC SWITCH GEAR STA 4+60
5/16/12	MEDIAN FROM PHASE 1B

PUBLIC INFRASTRUCTURE CONSTRUCTION
VISTA TECHNOLOGY CAMPUS
TOWN OF BETHLEHEM
ALBANY COUNTY, STATE OF NEW YORK

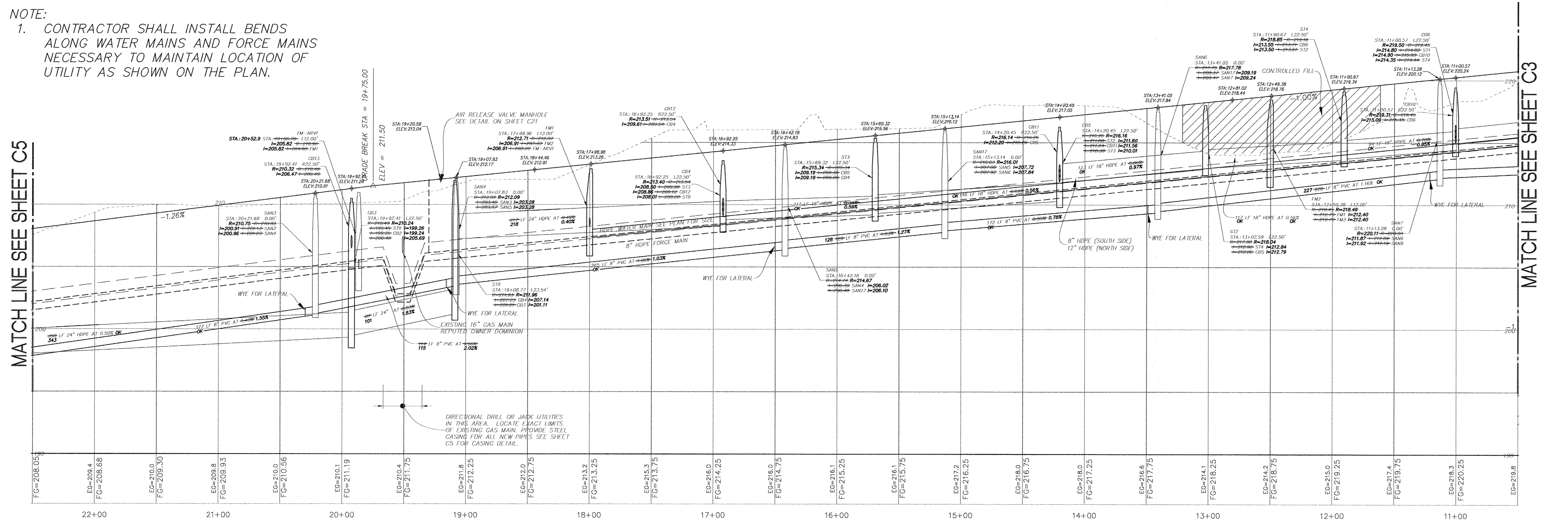
SCALE: H1"=40' H1"=4" (BY: WJ)
DATE: 2/18/11
FILE: 110027



VISTA BOULEVARD PLAN

NOTE: ASPHALT SPOT ELEVATIONS SHOWN HEREON ARE TOP OF ASPHALT BINDER ELEVATION.

NOTE:
 1. CONTRACTOR SHALL INSTALL BENDS ALONG WATER MAINS AND FORCE MAINS NECESSARY TO MAINTAIN LOCATION OF UTILITY AS SHOWN ON THE PLAN.



VISTA BOULEVARD PROFILE

NOTE: RECORD INFORMATION SHOWN HEREON OBTAINED BY INGALLS & ASSOCIATES LLP FROM A FIELD SURVEY CONDUCTED AUGUST 8, 2012 THROUGH AUGUST 13, AND REFLECTS CONDITIONS EXISTING AT THOSE OCCASIONS.

SANITARY SEWER, STORM SEWER AND HYDRANT & WATER VALVE TIE RECORD PLAN (LAST REVISED 10-16-12)

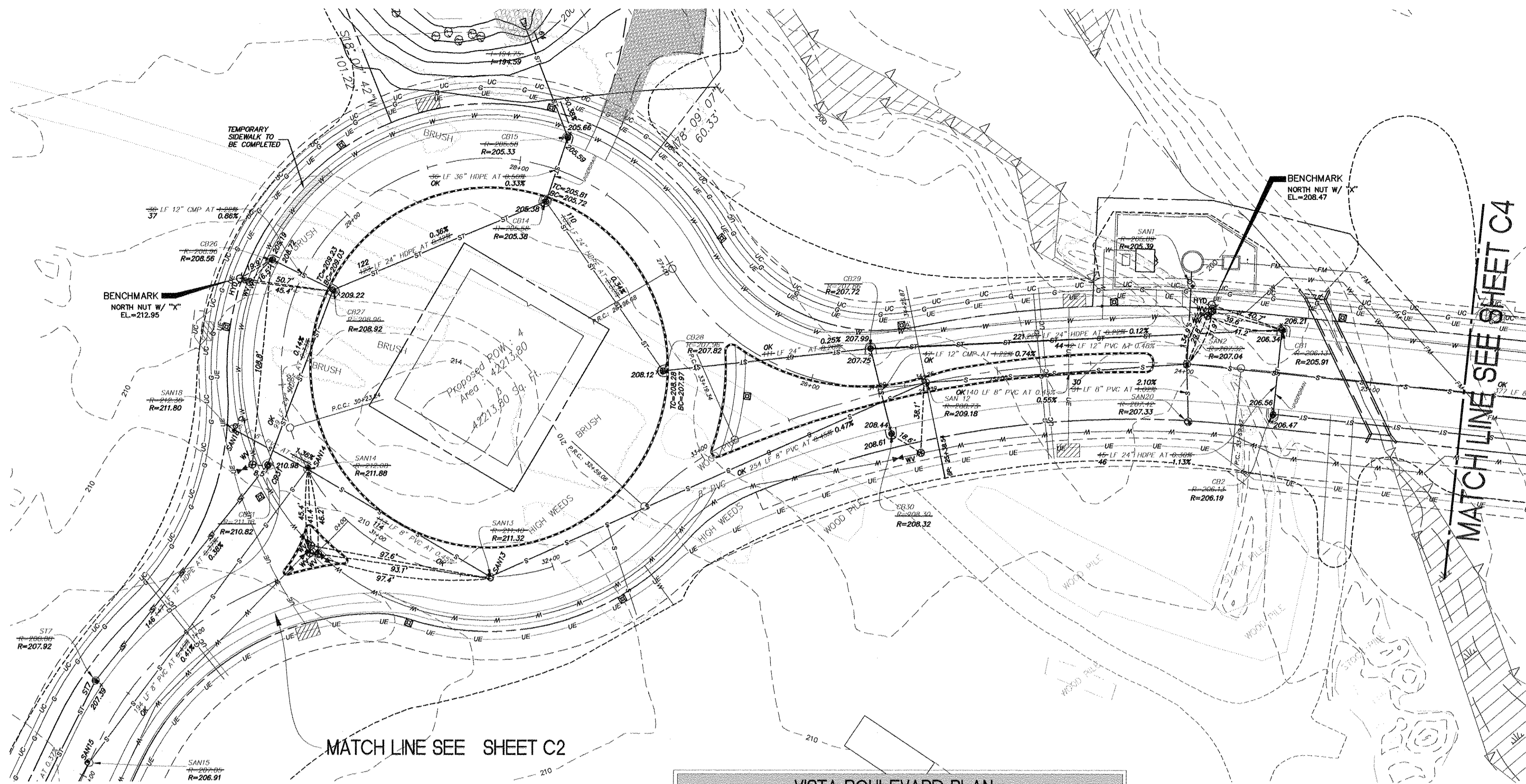
HERSHBERG & HERSHBERG
 Consulting Engineers and Land Surveyors
 18 Locust Street
 Albany, New York 12203

ALTERATION OF THIS DOCUMENT EXCEPT BY A LICENSED PROFESSIONAL ENGINEER OR LAND SURVEYOR, IS ILLEGAL.

DATE	REVISIONS
5/11/11	HYDRANT & LATERAL LOCATION
10/4/11	CONSTRUCTION ISSUE#1
11/1/11	ELECTRIC SWITCH GEARS
4/12/12	COMMUNICATIONS
5/19/12	MH/SWITCH GEAR STA. 20+00
5/14/12	PULLING MH STA. 15+50

PUBLIC INFRASTRUCTURE CONSTRUCTION
 VISTA TECHNOLOGY CAMPUS
 TOWN OF BETHLEHEM
 ALBANY COUNTY, STATE OF NEW YORK

SCALE: H=1"=40' V=1"=4'
 DATE: 2/8/11
 FILE: 110027
 CHK: DRH
 BY: WM
 110027-1.dwg

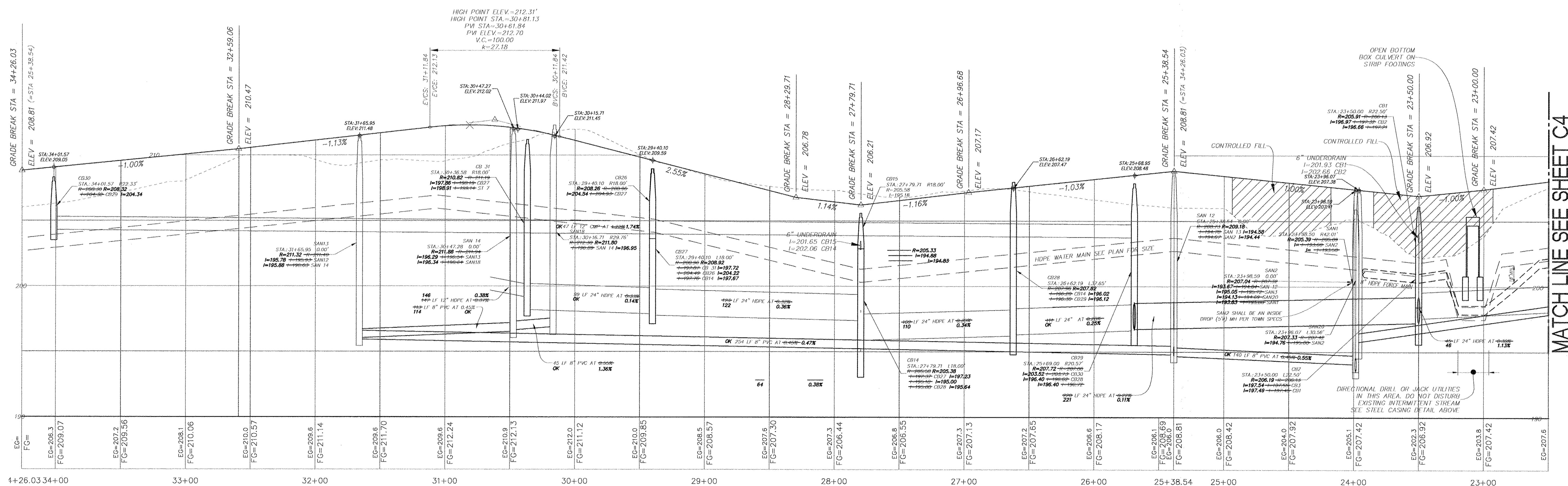


VISTA BOULEVARD PLAN

NOTE: ASPHALT SPOT ELEVATIONS SHOWN HEREON ARE TOP OF ASPHALT BINDER ELEVATION.

SYM	BOTANICAL NAME	COMMON NAME	SIZE	COMMENTS
AC	AMELANCHIER CANADENSIS	SHADBLow	6"-7" HT. HEAVY	B & B
BW	BUXUS x WINTER GEM	WINTER GEM BOXWOOD	18" HT.	C.G.
CA	CORNUS ALBA STOLONIFERA	RED OSIER DOGWOOD	3 GAL.	C.G.
EC	EUONYMUS ALATUS 'COMPACTA'	COMPACT BURNING BUSH	2"-3" HT.	B & B
JC	JUNIPERUS CHINENSIS 'SEA GREEN'	SEA GREEN JUNIPER	18" HT.	C.G.
GL	GLADIRASTIS LUTEA	YELLOW WOOD	2" CAL.	B & B
PH	PENNISETUM ALOPECUROIDES 'HAMEL'	DWARF FOUNTAIN GRASS	#3 POT	

NOTE:
1. CONTRACTOR SHALL INSTALL BENDS ALONG WATER MAINS AND FORCE MAINS NECESSARY TO MAINTAIN LOCATION OF UTILITY AS SHOWN ON THE PLAN.



VISTA BOULEVARD PROFILE

NOTE: RECORD INFORMATION SHOWN HEREON OBTAINED BY INDALLS & ASSOCIATES LLP FROM A FIELD SURVEY CONDUCTED AUGUST 8, 2012 THROUGH AUGUST 13, 2012 AND REFLECTS CONDITIONS EXISTING AT THOSE OCCASIONS.

SANITARY SEWER, STORM SEWER AND HYDRANT & WATER VALVE TIE RECORD PLAN (LAST REVISED 10-16-12)



HERSHBERG & HERSHBERG
Consulting Engineers and Land Surveyors

18 Locust Street
Albany, New York 12203

ALTERATION OF THIS DOCUMENT EXCEPT BY A LICENSED PROFESSIONAL ENGINEER OR LAND SURVEYOR, IS ILLEGAL.

DATE	REVISIONS
5/11/11	GAS & ELEC
11/17/11	ELECTRIC SWITCH GEARS
12/9/11	ELECTRIC SWITCH GEARS
4/12/12	COMMUNICATIONS

PUBLIC INFRASTRUCTURE CONSTRUCTION
VISTA TECHNOLOGY CAMPUS
TOWN OF BETHLEHEM
ALBANY COUNTY, STATE OF NEW YORK

FILE: 110027

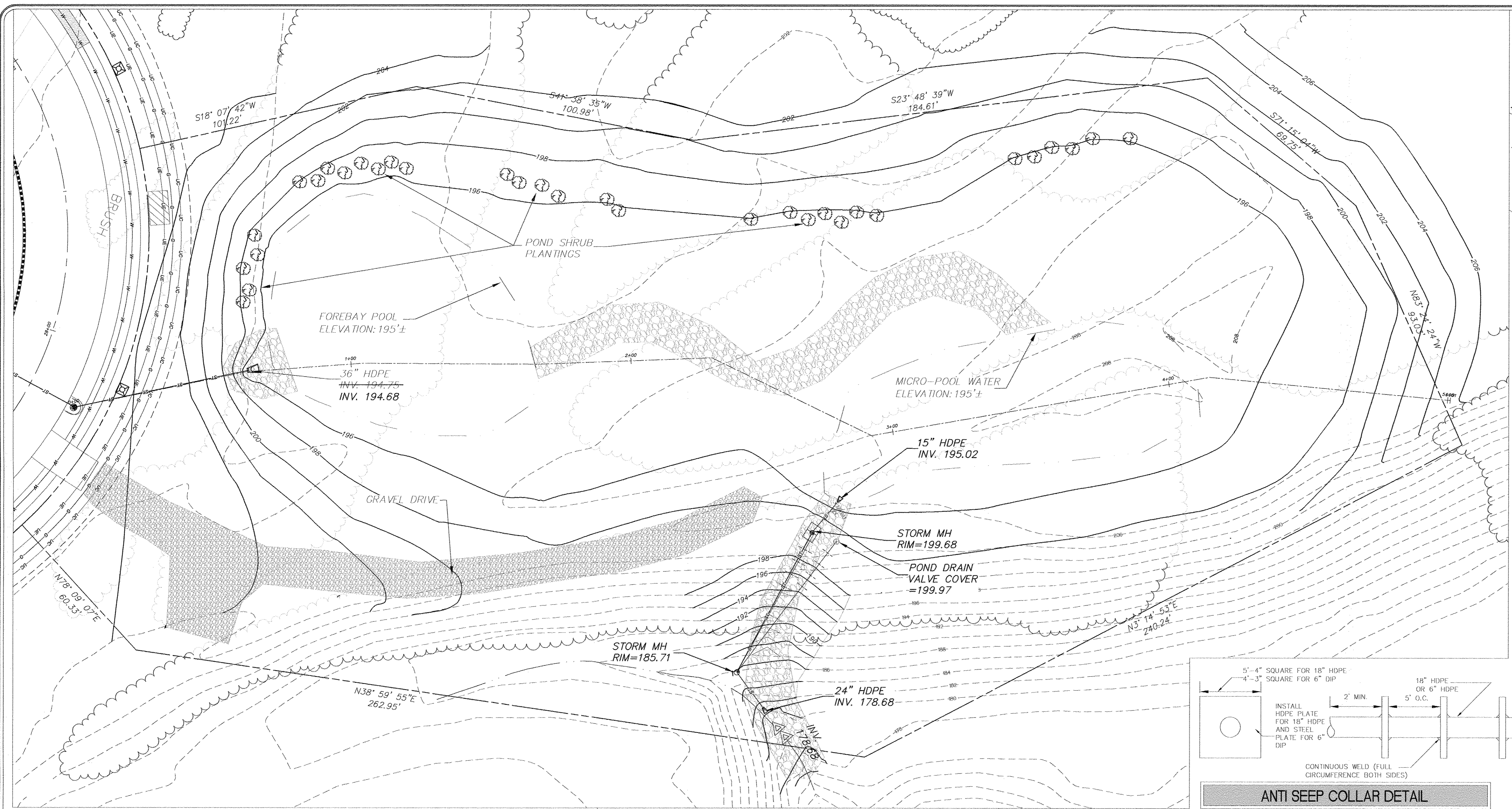
DATE: 2/18/11

CHK: DRH

BY: WM

SCALE: 1/4" = 1'-0"

110027-1.dwg



SWPPP BASIN PLAN

WETLAND PLANTING NOTES

A planting plan calling for a variety of submergent and emergent plants is provided as shown on this sheet (Sheet C-6). These will be planted randomly within suitable areas to approximate natural conditions. Preparation will include providing a 6 inch layer of in-situ topsoil which is clay based and highly impervious but rich in nitrogen and phosphorus. Planting will be by seed, by plugs, container grown plants or nursery plants which will be delivered balled and burlapped.

Ensure that the planting area is regularly graded with no serious undulations which can cause problems with watering after planting. Pre-irrigate the site before planting to ensure the entire soil profile is saturated.

After area to be seeded dries to a slightly moist condition, Mix and spread seed using a mechanical seeder. Rake to cover seed with 3/8" of soil.

Plant plugs using the "Water Planting Method" - Flood the area to a depth of 2-4 inches. Dig the holes using a plug planter or a pointed shovel and place the plug. After placing the plug in the hole, stamp the soil lightly around it. Let the standing water evaporate off down to saturation with no standing water before allowing more water into the system. Depending on climate and daily maximum temperatures, this may take from 5-10 days. Plugs should be planted about 18-20 inches apart. At this spacing, the plants will grow together in one growing season. Plugs should be planted in the spring or the summer.

After planting, care must be taken not to drown the plants. Over the course of the first growing season, the level of the water in the wetland should be slowly increased. This will encourage the growth of the above ground biomass. The watering frequency should be based on rainfall and daily maximum temperatures. Generally, water should be filled to a 2-3 inch level then drained down naturally for the first month after planting. Drainage time should take about 1 week to 10 days. Refill the system for 15 to 20 days before draining again by controlling outfall level. During the second month, increase the filled level to about 6-8 inches by controlling outfall level. Use the same time frame as the first month. After that let natural variation of water level take place. The main factor is to keep the filled water level so that a majority of the plants need to have at least one quarter to one third of their tops above the waterline. Again, this allows the plants to "breathe."

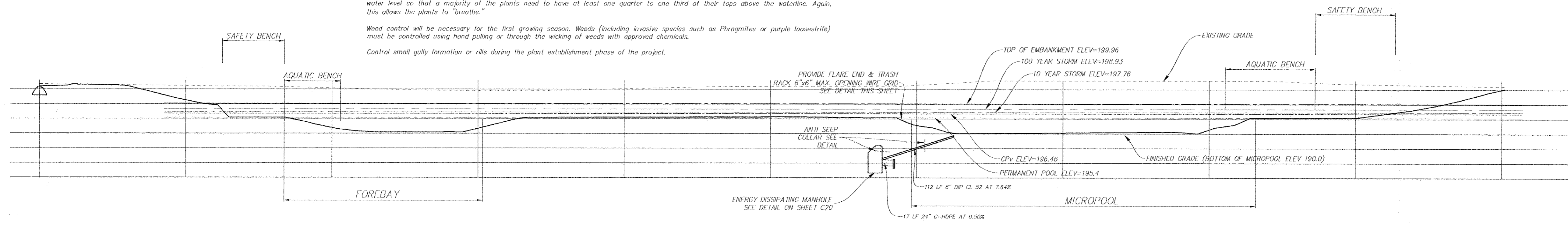
Weed control will be necessary for the first growing season. Weeds (including invasive species such as Phragmites or purple loosestrife) must be controlled using hand pulling or through the wicking of weeds with approved chemicals.

Control small gully formation or rills during the plant establishment phase of the project.

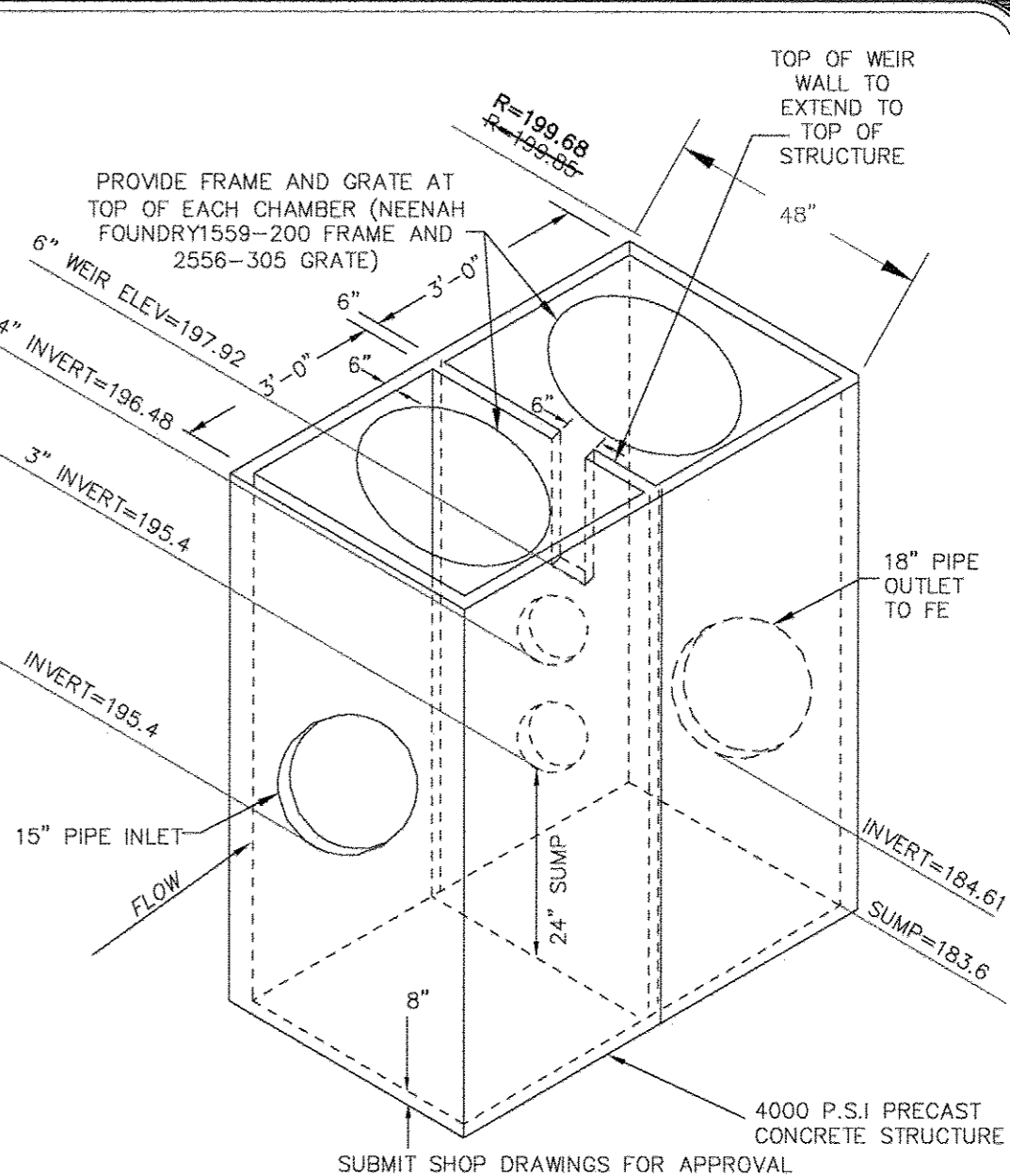
Seeding and Mulching Notes:

- A. For areas to be treated after grading
 1. Seed areas after grading at proper season.
 2. Utilize a seed mix of 70% Hard Fescue, 20% Perennial Ryegrass, 10% Kentucky Blue (Nassau or Challenger). Apply at 4 lbs. per 1000 S.F.
 3. Treat areas with fiber mulch.

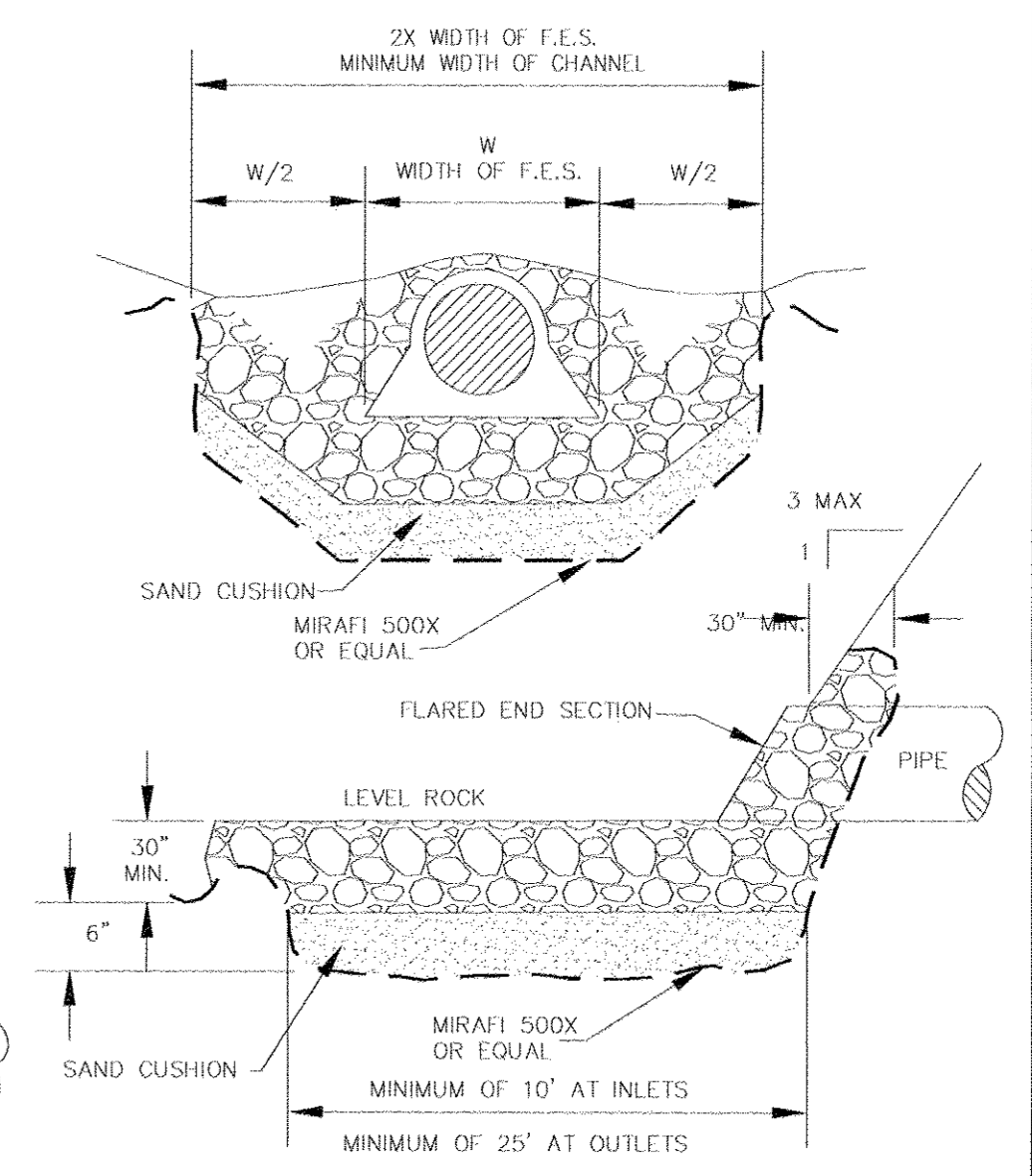
HERBACEOUS PLANTS SHALL BE MAINTAINED AND WARRANTED UNTIL ACCEPTANCE OR A MAXIMUM OF 3 MONTHS AFTER PLANTING. SHRUBS AND TREES SHALL BE MAINTAINED AND WARRANTED FOR 1 YEAR AFTER ACCEPTANCE.



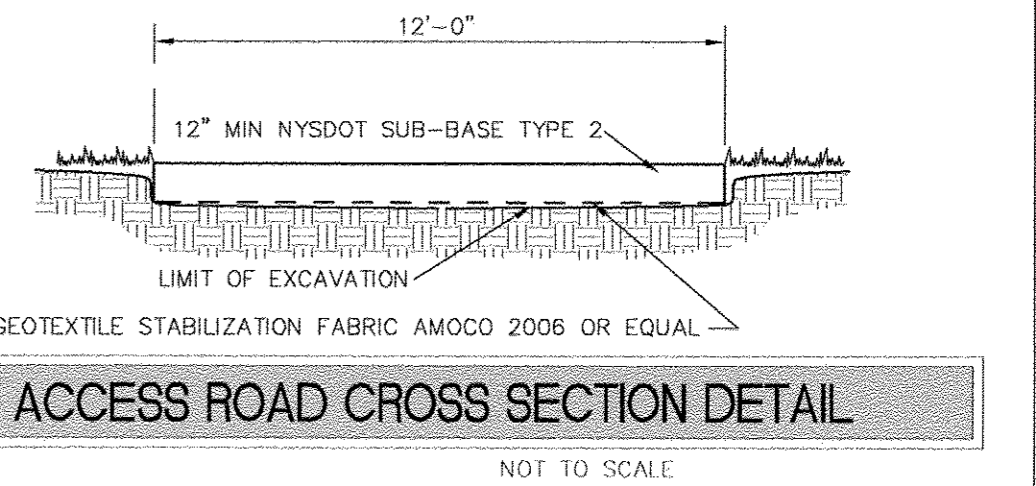
SWPPP BASIN SECTION



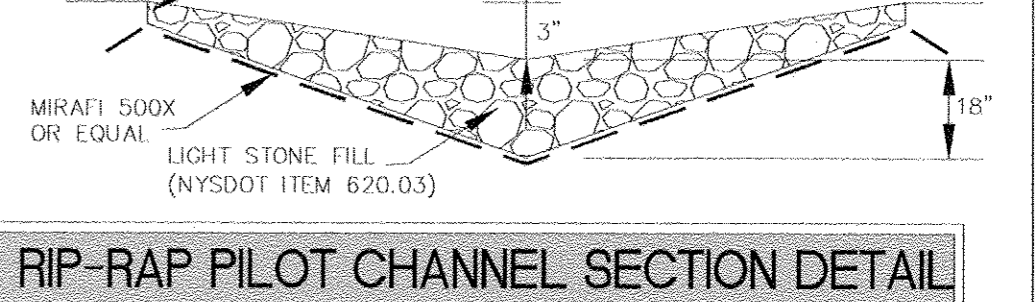
ORIFICE CONTROL STRUCTURE (P-1) DETAIL



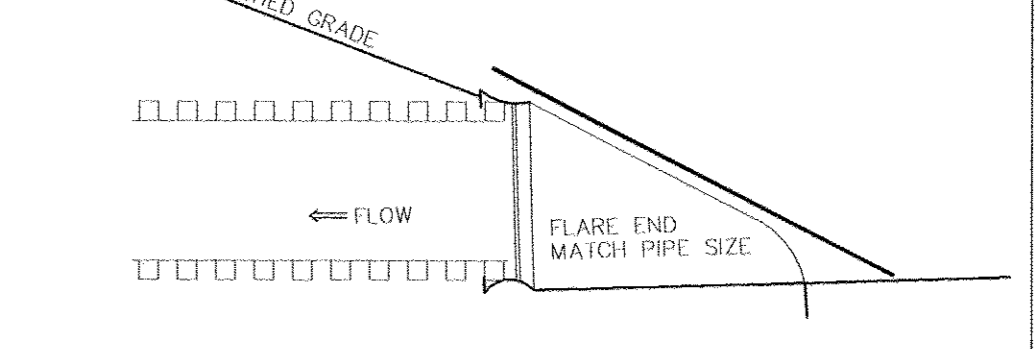
INVERT CHANNEL AND BENCHWALL DETAIL



ACCESS ROAD CROSS SECTION DETAIL

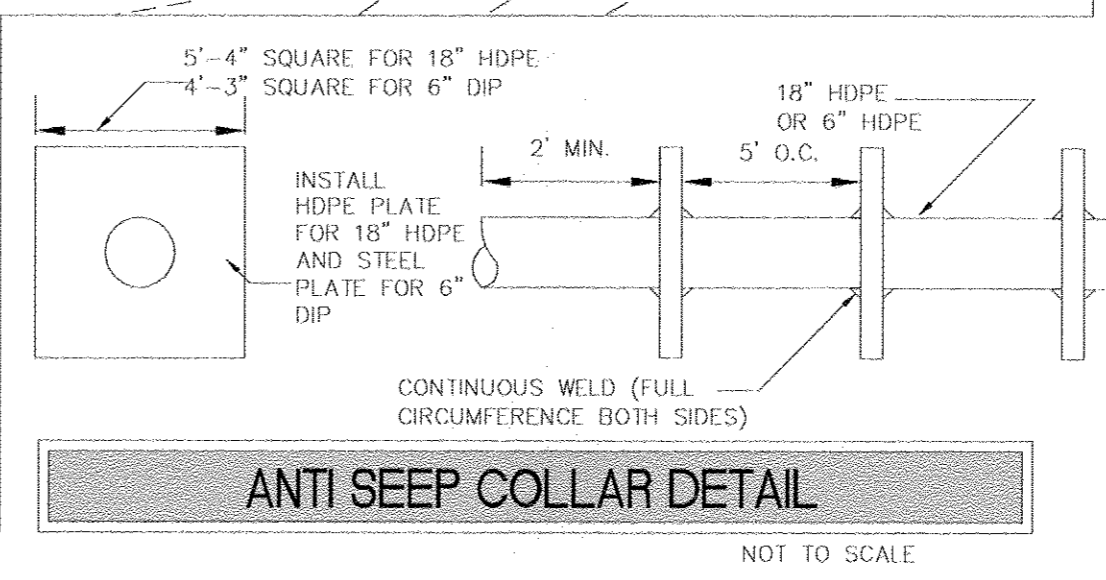


RIP-RAP PILOT CHANNEL SECTION DETAIL



POND OUTLET WIRE TRASH RACK DETAIL

SANITARY SEWER, STORM SEWER AND HYDRANT & WATER VALVE TIE RECORD PLAN (LAST REVISED 10-16-12)



ANTI SEEP COLLAR DETAIL

HERSHBERG & HERSHBERG
Consulting Engineers and Land Surveyors
18 Locust Street
Albany, New York 12203

ALTERATION OF THIS DOCUMENT EXCEPT BY A LICENSED PROFESSIONAL ENGINEER OR LAND SURVEYOR, IS ILLEGAL.

S:\bnp\DRHSTAMP.bmp

DATE	REVISIONS
5/17/11	

REMARKS
GAS & ELEC

FILE: 110027

SCALE: R1"=20' V1"=1'

DATE: 2/18/11

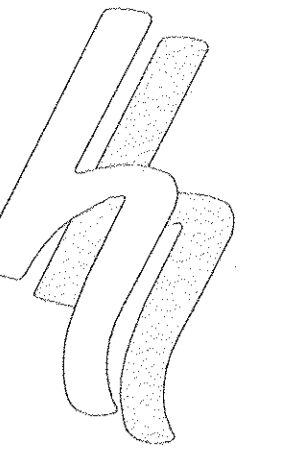
CHK: DRH

BY: NW

110027-1.dwg

PUBLIC INFRASTRUCTURE CONSTRUCTION
VISTA TECHNOLOGY CAMPUS
TOWN OF BETHLEHEM
ALBANY COUNTY, STATE OF NEW YORK

06



HERSHBERG & HERSHBERG

Consulting Engineers and Land Surveyors

18 Locust Street
Albany, New York 12203

ALTERATION OF THIS DOCUMENT EXCEPT BY A LICENSED PROFESSIONAL ENGINEER OR LAND SURVEYOR, IS ILLEGAL.

REMARKS	DATE
HYDRANT & SEWER LATERALS	5/11/11
COMMUNICATIONS	4/12/12
COMMUNICATIONS	5/2/12

REVISIONS

PUBLIC INFRASTRUCTURE CONSTRUCTION
VISTA TECHNOLOGY CAMPUS
TOWN OF BETHLEHEM
ALBANY COUNTY, STATE OF NEW YORK

FILE: 110027-1.dwg

DATE: 2/8/11

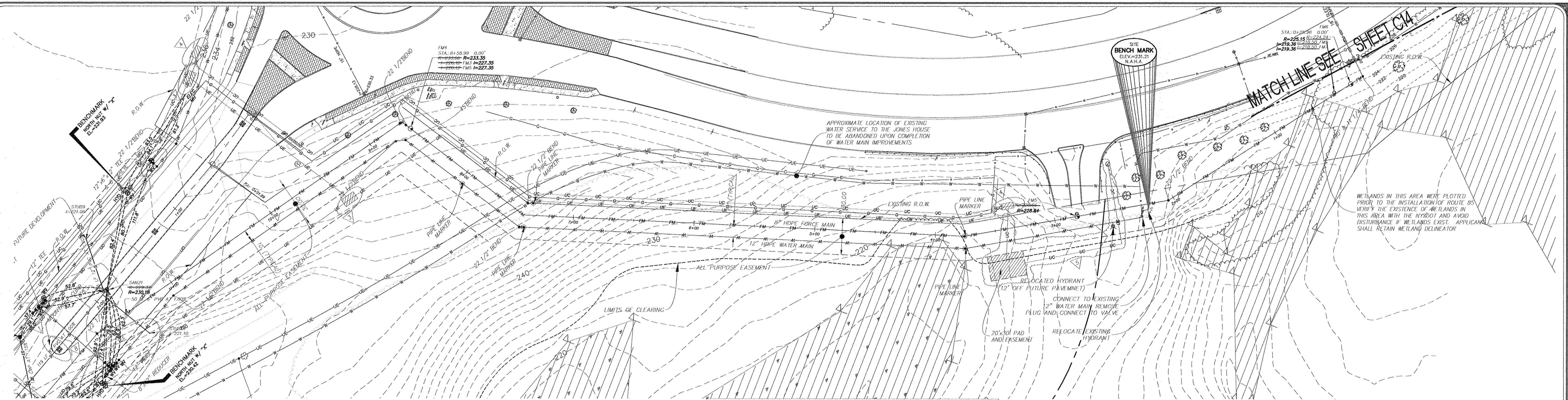
CHK: DRH

BY: WM

SCALE: 1/8"=1'-0"

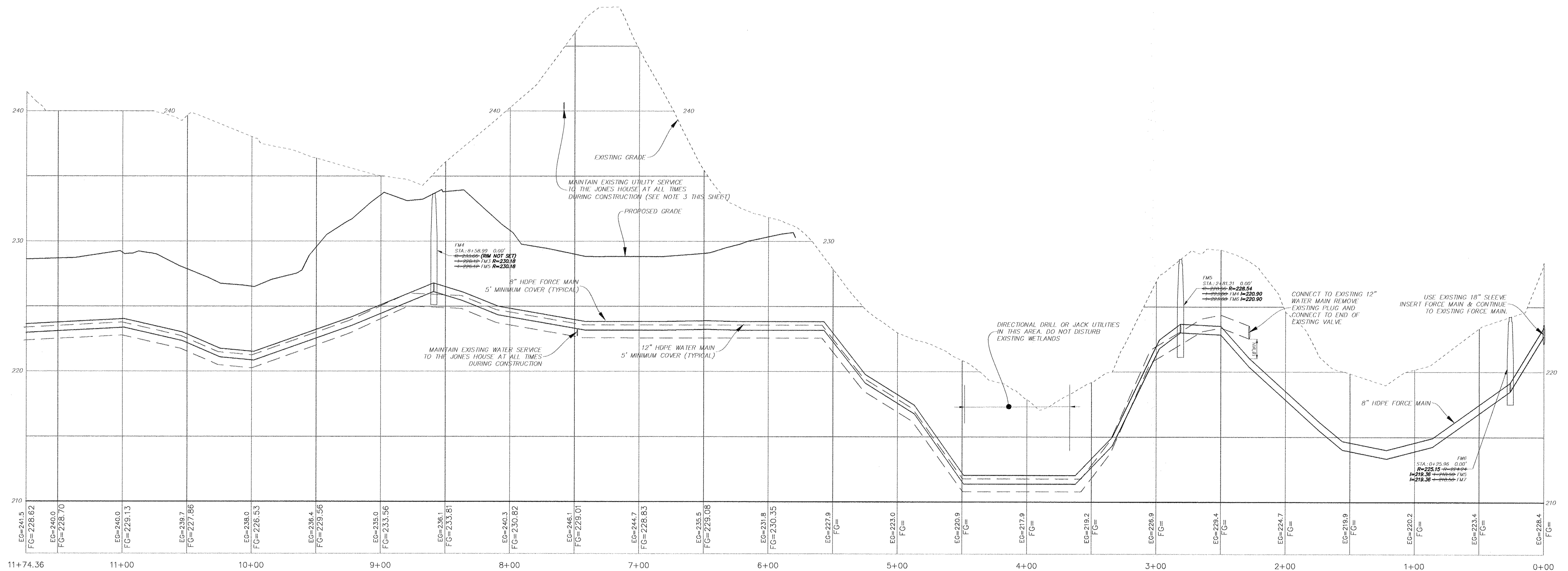
FILE: 110027

07



SEE SHEET C3 FOR CONTINUATION

FORCE MAIN PLAN



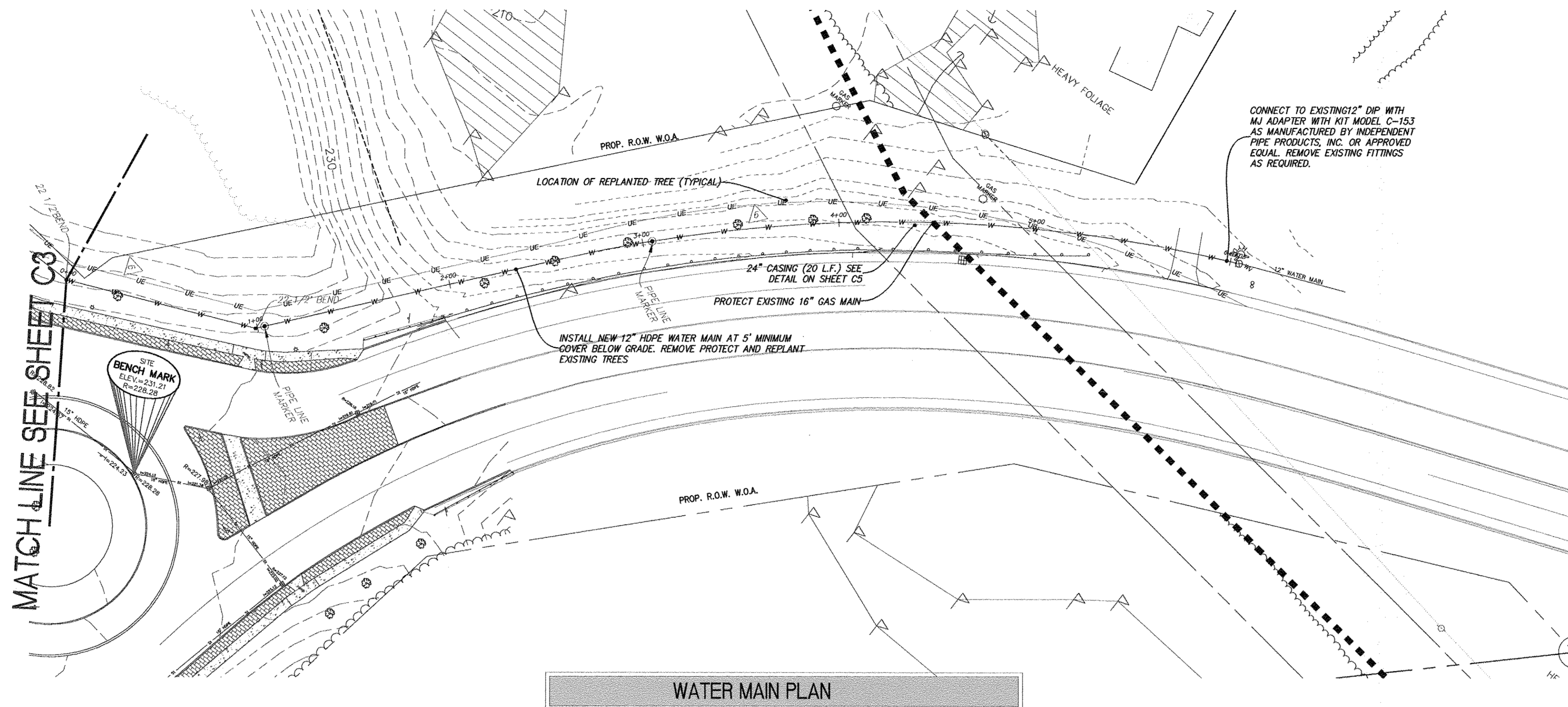
FORCE MAIN PROFILE

NOTE:

- INSTALL PIPE LINE MARKERS IN ACCORDANCE WITH TOWN'S STANDARD SPECIFICATION FOR THE WATER MAIN AND FORCE MAIN SHOWN HEREON.
- CONTRACTOR SHALL INSTALL BENDS ALONG WATER MAINS AND FORCE MAINS NECESSARY TO MAINTAIN LOCATION OF UTILITY AS SHOWN ON THE PLAN.
- THE TIME FRAME FOR POTENTIAL WATER SERVICE INTERRUPTION TO THE JONES HOUSE SHALL BE LIMITED TO 4 HOURS. THE OWNER SHALL BE NOTIFIED AT LEAST 72 HOUR PRIOR TO WATER SERVICE WORK. COORDINATE ALL WORK WITH THE TOWN OF BETHLEHEM.

NOTE:
RECORD INFORMATION SHOWN HEREON OBTAINED BY INGALLS & ASSOCIATES LLP FROM A FIELD SURVEY CONDUCTED AUGUST 8, 2012 THROUGH AUGUST 13, AND REFLECTS CONDITIONS EXISTING AT THOSE OCCASIONS.

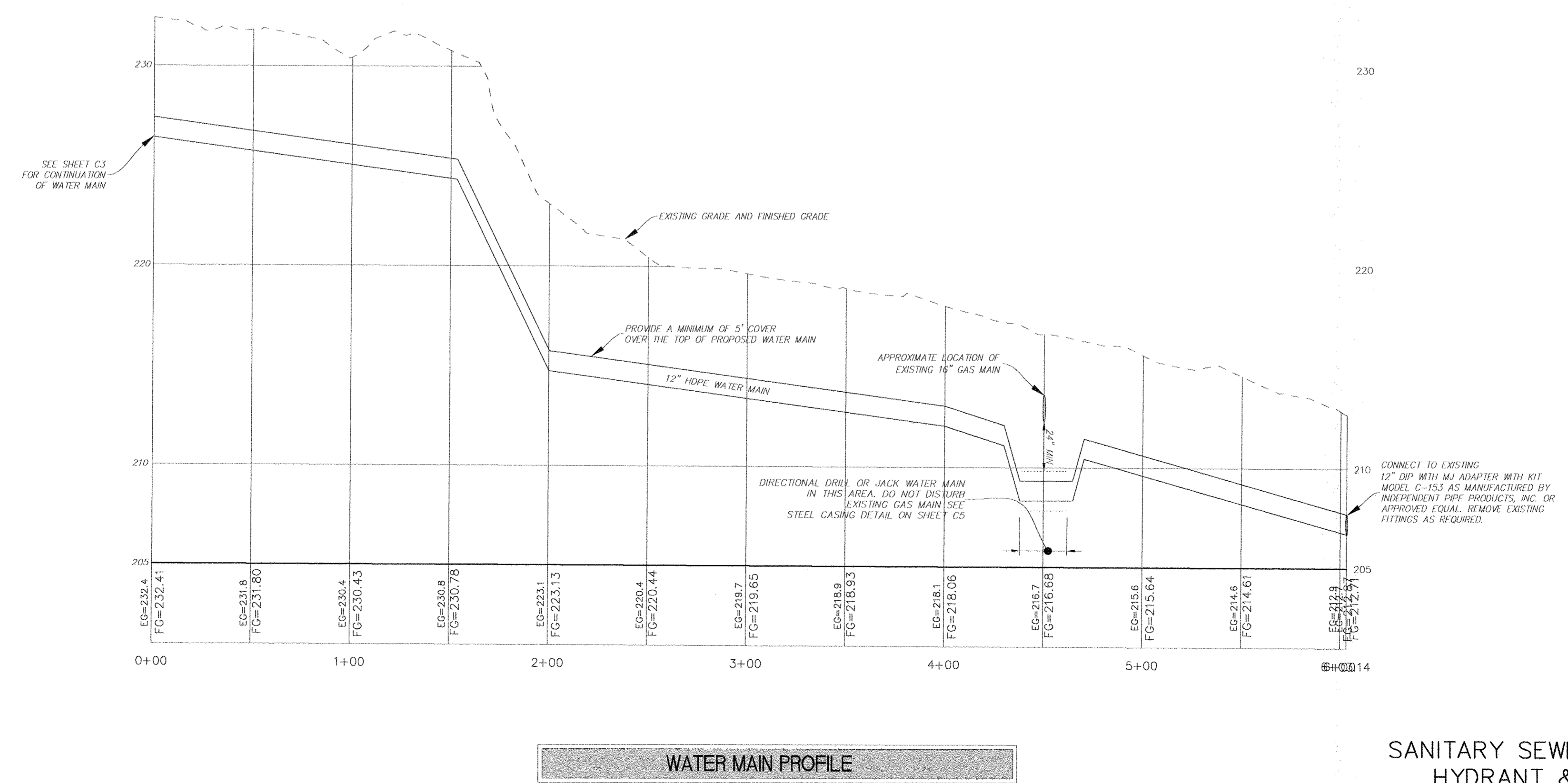
SANITARY SEWER AND STORM SEWER
RECORD PLAN (LAST REVISED 10-16-12)



NOTE: INSTALL PIPE LINE MARKERS IN ACCORDANCE WITH TOWN'S STANDARD SPECIFICATION FOR THE WATER MAIN SHOWN HEREON.

ALTERATION OF THIS DOCUMENT EXCEPT BY A LICENSED PROFESSIONAL ENGINEER OR LAND SURVEYOR, IS ILLEGAL.

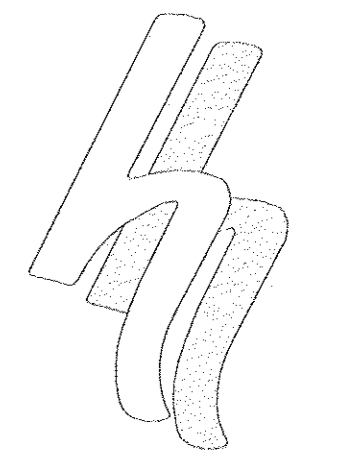
REVISIONS	DATE	REMARKS
	5/10/12	ELECTRIC



SANITARY SEWER, STORM SEWER AND HYDRANT & WATER VALVE TIE RECORD PLAN (LAST REVISED 10-16-12)

PUBLIC INFRASTRUCTURE CONSTRUCTION
 VISTA TECHNOLOGY CAMPUS
 TOWN OF BETHLEHEM
 ALBANY COUNTY, STATE OF NEW YORK

SCALE: 1/4" = 1'-0" (1" = 4')
 DATE: 2/18/11
 FILE: 110027
 BY: WM
 CHK: DRH
 110027-1.dwg



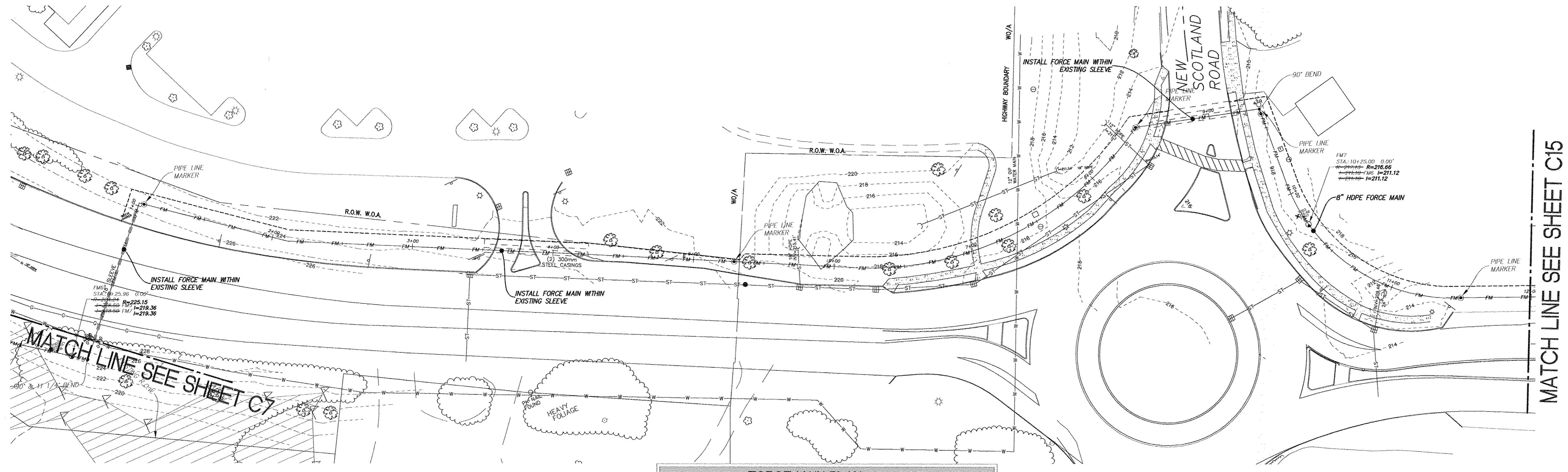
HERSHBERG & HERSHBERG
 Consulting Engineers and Land Surveyors
 18 Locust Street
 Albany, New York 12203

ALTERATION OF THIS DOCUMENT EXCEPT BY A LICENSED PROFESSIONAL ENGINEER OR LAND SURVEYOR, IS ILLEGAL.

DATE	REVISIONS

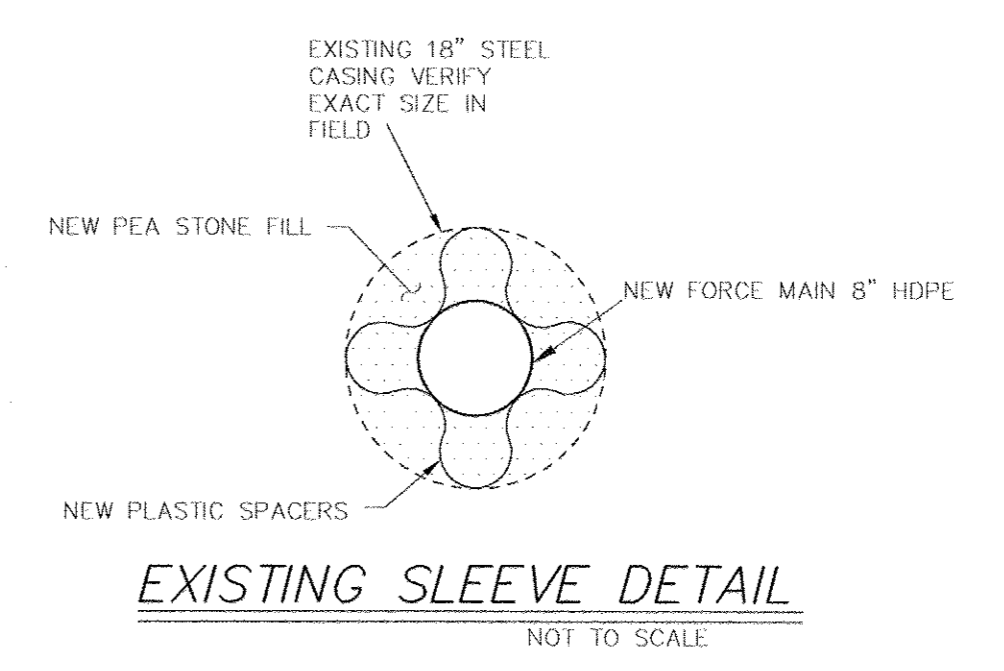
PUBLIC INFRASTRUCTURE CONSTRUCTION
 VISTA TECHNOLOGY CAMPUS
 TOWN OF BETHLEHEM
 ALBANY COUNTY, STATE OF NEW YORK

SCALE: HORIZONTAL=1"=40' VERTICAL=1"=4'
 DATE: 2/18/11
 FILE: 110027
 GJK DRH
 110027-1.dwg



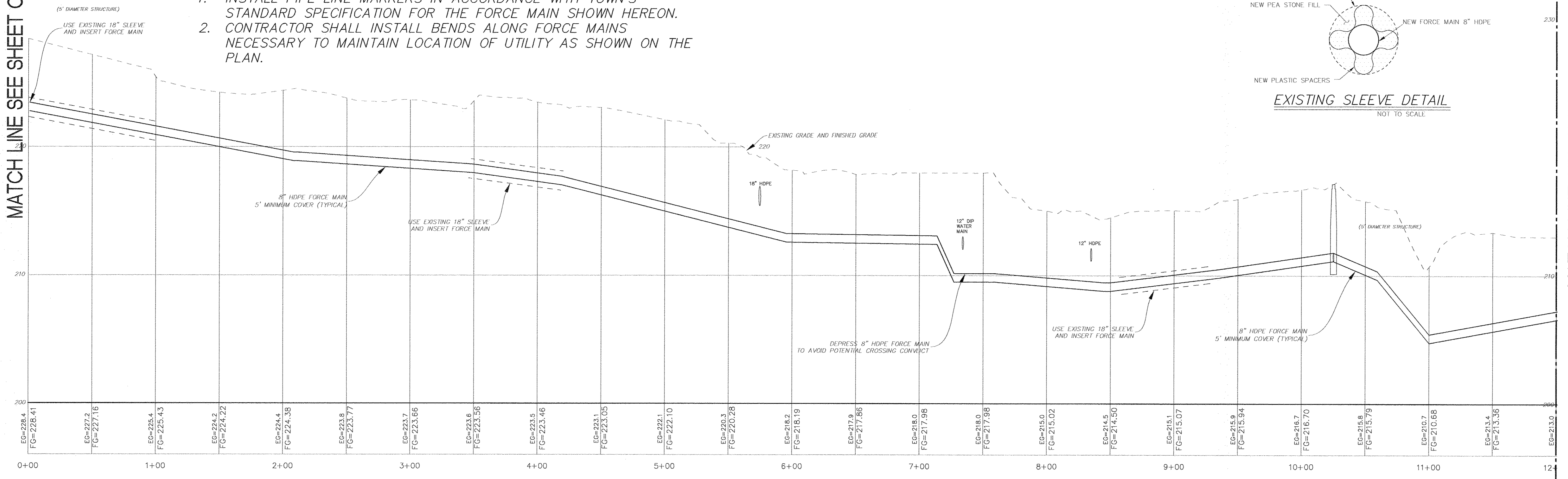
FORCE MAIN PLAN

- NOTE:
- INSTALL PIPE LINE MARKERS IN ACCORDANCE WITH TOWN'S STANDARD SPECIFICATION FOR THE FORCE MAIN SHOWN HEREON.
 - CONTRACTOR SHALL INSTALL BENDS ALONG FORCE MAINS NECESSARY TO MAINTAIN LOCATION OF UTILITY AS SHOWN ON THE PLAN.



EXISTING SLEEVE DETAIL
NOT TO SCALE

MATCH LINE SEE SHEET C7



FORCE MAIN PROFILE

MATCH LINE SEE SHEET C15

NOTE:
 RECORD INFORMATION SHOWN HEREON OBTAINED BY
 INGALLS & ASSOCIATES LLP FROM A FIELD SURVEY
 CONDUCTED AUGUST 8, 2012 THROUGH AUGUST 13,
 AND REFLECTS CONDITIONS EXISTING AT THOSE
 OCCASIONS.

SANITARY SEWER AND STORM SEWER
 RECORD PLAN

C14

MATCH LINE SEE SHEET C14

MATCH LINE SEE SHEET C14

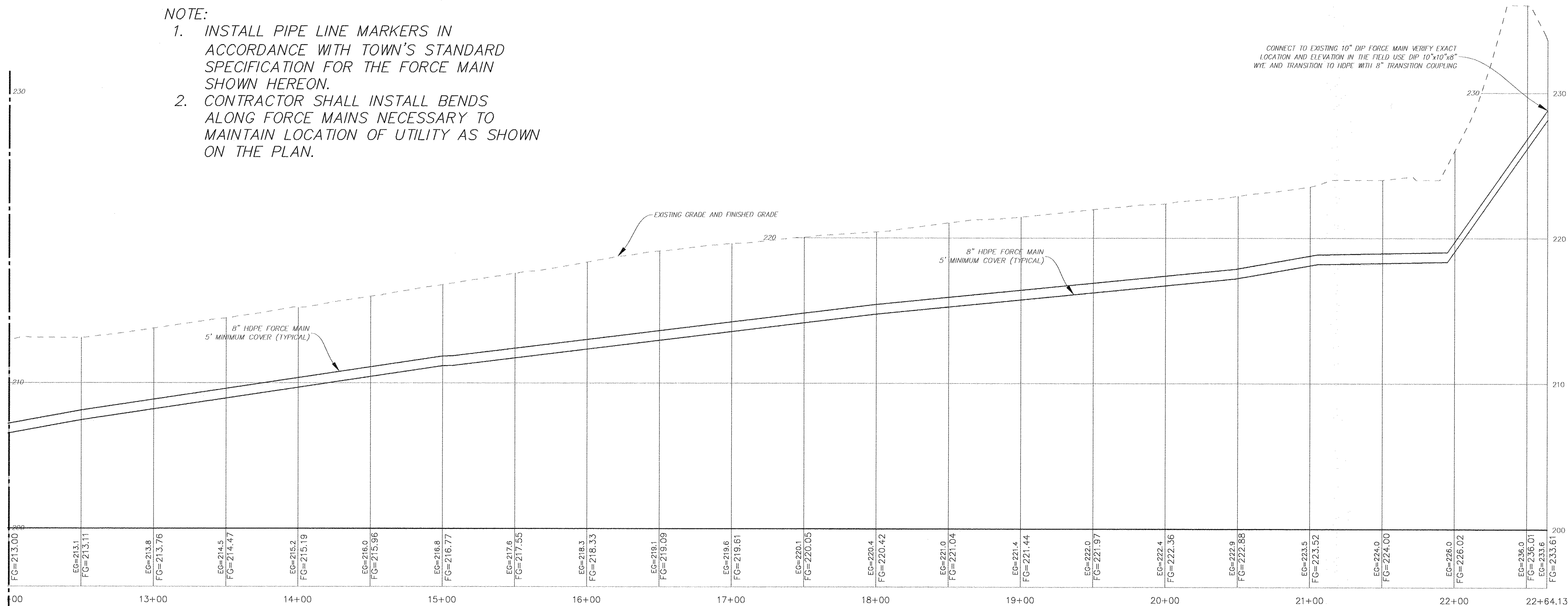
CHERRY AVENUE EXTENSION

FORCE MAIN PLAN

NOTE:

1. INSTALL PIPE LINE MARKERS IN ACCORDANCE WITH TOWN'S STANDARD SPECIFICATION FOR THE FORCE MAIN SHOWN HEREON.
2. CONTRACTOR SHALL INSTALL BENDS ALONG FORCE MAINS NECESSARY TO MAINTAIN LOCATION OF UTILITY AS SHOWN ON THE PLAN.

FORCE MAIN PROFILE



ALTERATION OF THIS DOCUMENT EXCEPT BY A LICENSED PROFESSIONAL ENGINEER OR LAND SURVEYOR, IS ILLEGAL.

REVISIONS	DATE	REMARKS

PUBLIC INFRASTRUCTURE CONSTRUCTION
VISTA TECHNOLOGY CAMPUS
TOWN OF BETHLEHEM
ALBANY COUNTY, STATE OF NEW YORK

SCALE: H/T=40' V/T=4' (BY: MM)
DATE: 2/18/11
GHC DRH
110027-1.dwg