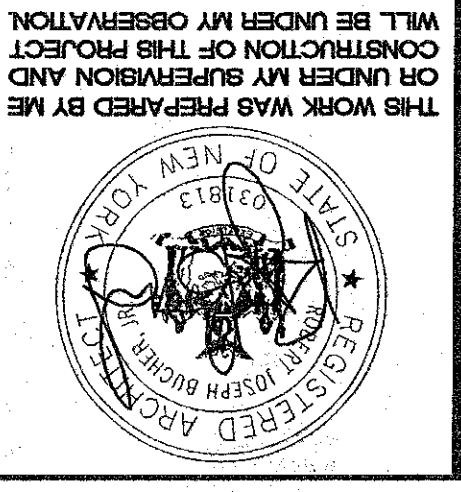


SCALE:	AS NOTED
DATE:	5/9/11
DRAWN:	DJM
SHEET#:	

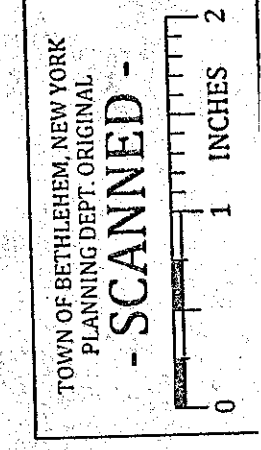
HAGUE BOULEVARD APARTMENTS - 8 UNIT BUILDING
 TOWN OF BETHELEHEM, NY
 EXTERIOR ELEVATIONS

DESIGN LOGIC ARCHITECTS, PC
 INNOVATIVE EXTERIOR AND INTERIOR PLANNING
 3 WINNERS CIRCLE SUITE 305
 ALBANY, NEW YORK 12205
 PH 518.426.8880 FX 518.426.3519
 www.designlogicarchitects.com



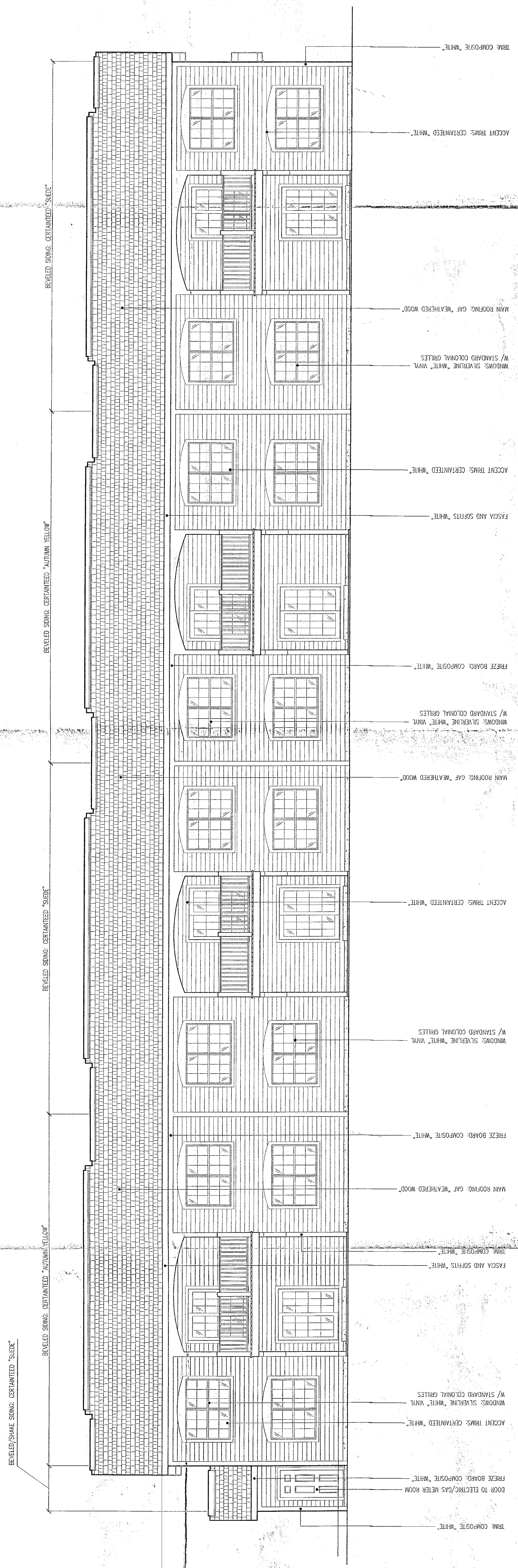
THIS WORK WAS PREPARED BY ME OR UNDER MY SUPERVISION AND CONSTRUCTION OF THIS PROJECT WILL BE UNDER MY OBSERVATION.

RECEIVED
 JUN 01 2011
 Town of Bethlehem
 Planning Board

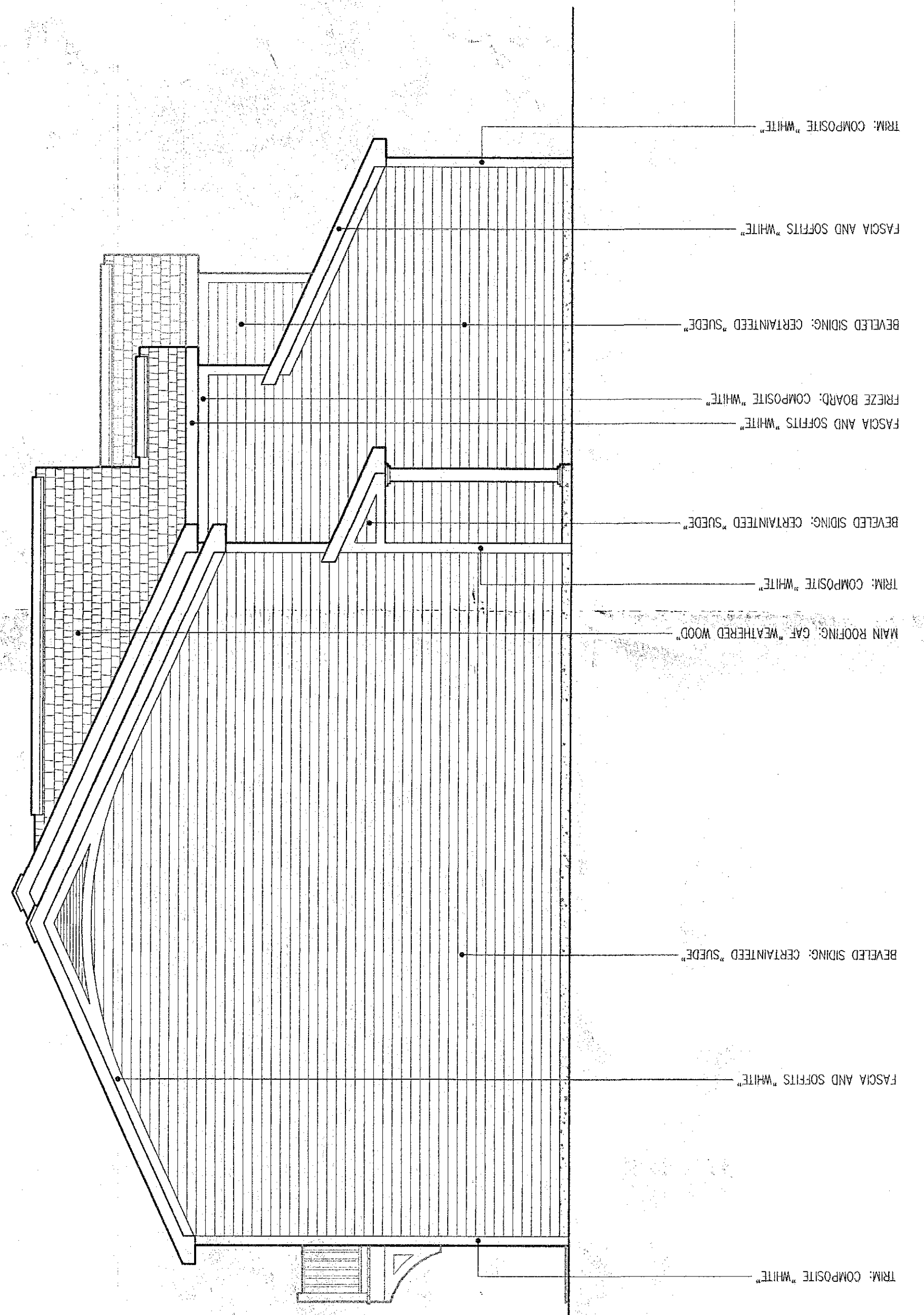


NOTE:
 BUILDING FINISH FLOOR
 ELEVATION MAY STEP AT
 MIDPOINT AS REQUIRED BY
 FINISH GRADE ELEVATION

PLANNING BOARD
 TOWN OF BETHELEHEM
 ALBANY COUNTY, NEW YORK
 This Site Plan Approved
 Date 6/3/2011 s1Art2



1 TYPICAL REAR ELEVATION
 3/16" = 1'-0"



2 TYPICAL LEFT SIDE ELEVATION
 3/16" = 1'-0"