

BETHLEHEM TOWN CENTER

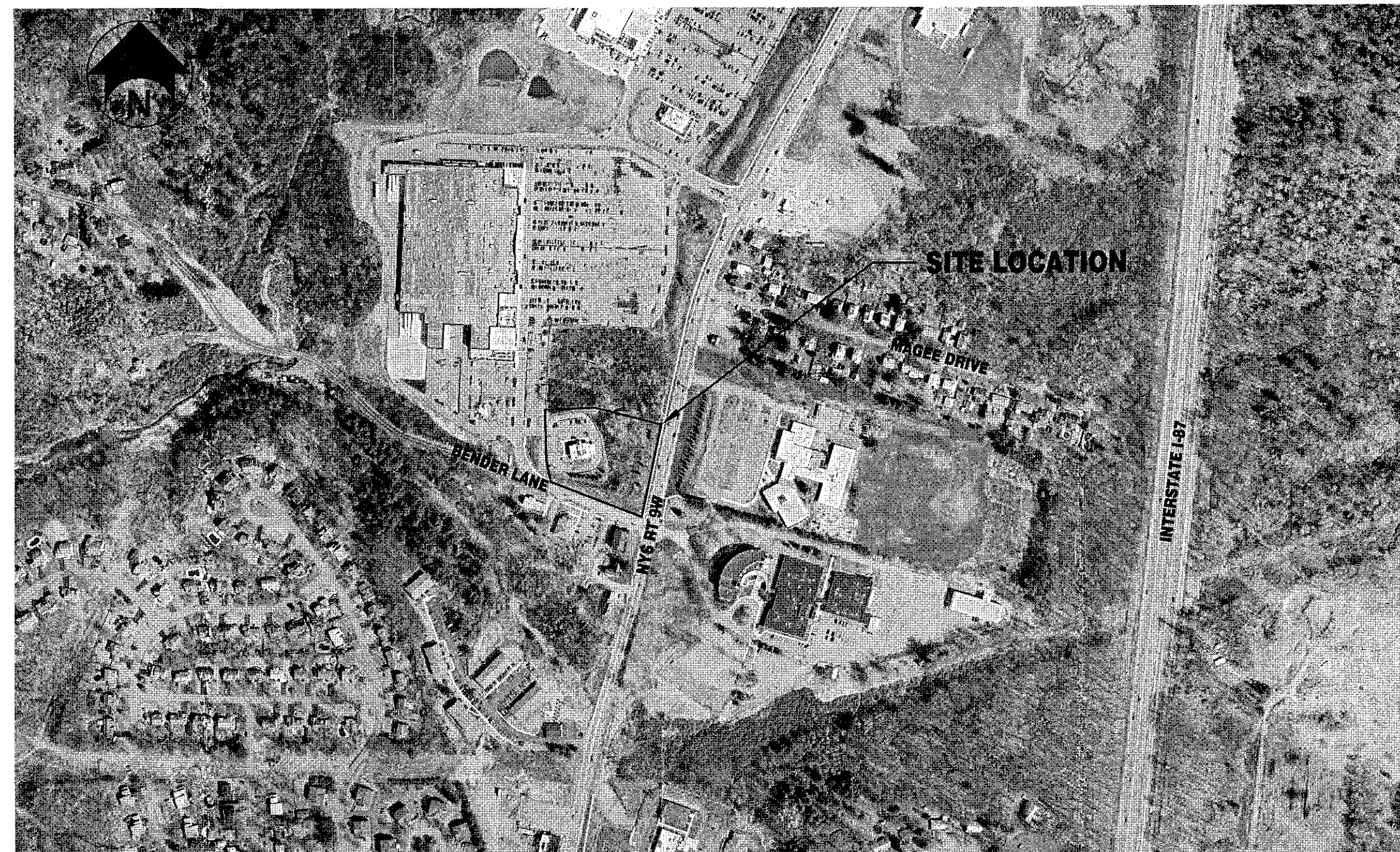
LANDSCAPING MODIFICATION

NYS ROUTE 9W AND BENDER LANE
GLENMONT, NEW YORK 12207

OWNER:
NIGRO COMPANIES
20 CORPORATE WOODS BLVD.
ALBANY, NY 12211
www.nigrocos.com
(518) 436-8429

INDEX OF DRAWINGS

DRAWING NO.	TITLE	SHEET NO.
C000	COVER SHEET	1 OF 5
X100	EXISTING CONDITIONS PLAN	2 OF 5
C100	SITE CLEARING PLAN	3 OF 5
C130	GRADING & LANDSCAPING PLAN	4 OF 5
C131	DETAILS	5 OF 5



EXISTING SITE MAP
NO SCALE

GOVERNING AGENCY CONTACTS:

PLANNING
TOWN OF BETHLEHEM PLANNING BOARD
MR. GEORGE LEVEILLE, CHAIRMAN
BETHLEHEM TOWN HALL
445 DELAWARE AVENUE
DELMAR, NY 12207
(518) 469-4955

REVISIONS			
NO.	DATE	DESCRIPTION	REV. CK'D
1	12-21-12	PER TOWN COMMENTS	JDO GEU

NOTE: Unauthorized alteration or addition to this drawing is a violation of the New York State Education Law Article 145, Section 7209.

APPROVED BY:

PLANNING BOARD CHAIRMAN

DATE:



CALL BEFORE DIGGING,
DRILLING OR BLASTING
DIG SAFELY NEW YORK
1-800-962-7962

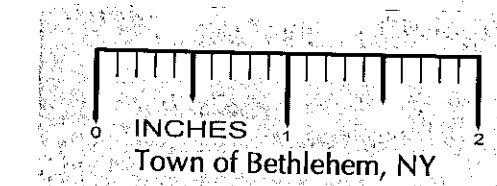
PREPARED BY:

B
Bergmann
associates

www.bergmannpc.com

10-B Madison Avenue Ext.
Albany, New York 12203
518.862.0325 / 518.862.0326 fax

Engineers / Architects / Planners / Surveyors



PLANNING BOARD
TOWN OF BETHLEHEM
ALBANY COUNTY, NEW YORK
This Site Plan Approved.
George Leveille
Title: Chairman
Date: March 29, 2013
SPA 191



Project Number: 9337.01
File Name: C000.DWG
Drawing Number:

C000

1 of 5

SPA 191

Amend next to original SPA 118