

BETHLEHEM TOWN CENTER LANDSCAPING MODIFICATION

ROUTE 9W AND BENDER LN.
GLENMONT, NY 12077

NIGRO COMPANIES

20 CORPORATE WOODS
ALBANY, NY 12211

Bergmann
associates
architects // engineers // planners

10B Madison Avenue Extension
Albany, New York 12203

office: 518.862.0325
fax: 518.862.0326

www.bergmannpc.com

REVISIONS			
NO.	DATE	DESCRIPTION	REV. CK'D
1	12-21-12	PER TOWN COMMENTS	JDO GEU

PLANNING BOARD
TOWN OF BETHLEHEM
ALBANY COUNTY, NEW YORK
This Site Plan Approved
[Signature]
Title: Chairman
Date: March 29, 2013

SPA 191

SITE CLEARING PLAN

Drawing Copyright © 2012

NOTE: Unauthorized alteration or addition to this drawing is a violation of the New York State Education Law Article 145, Section 7209.

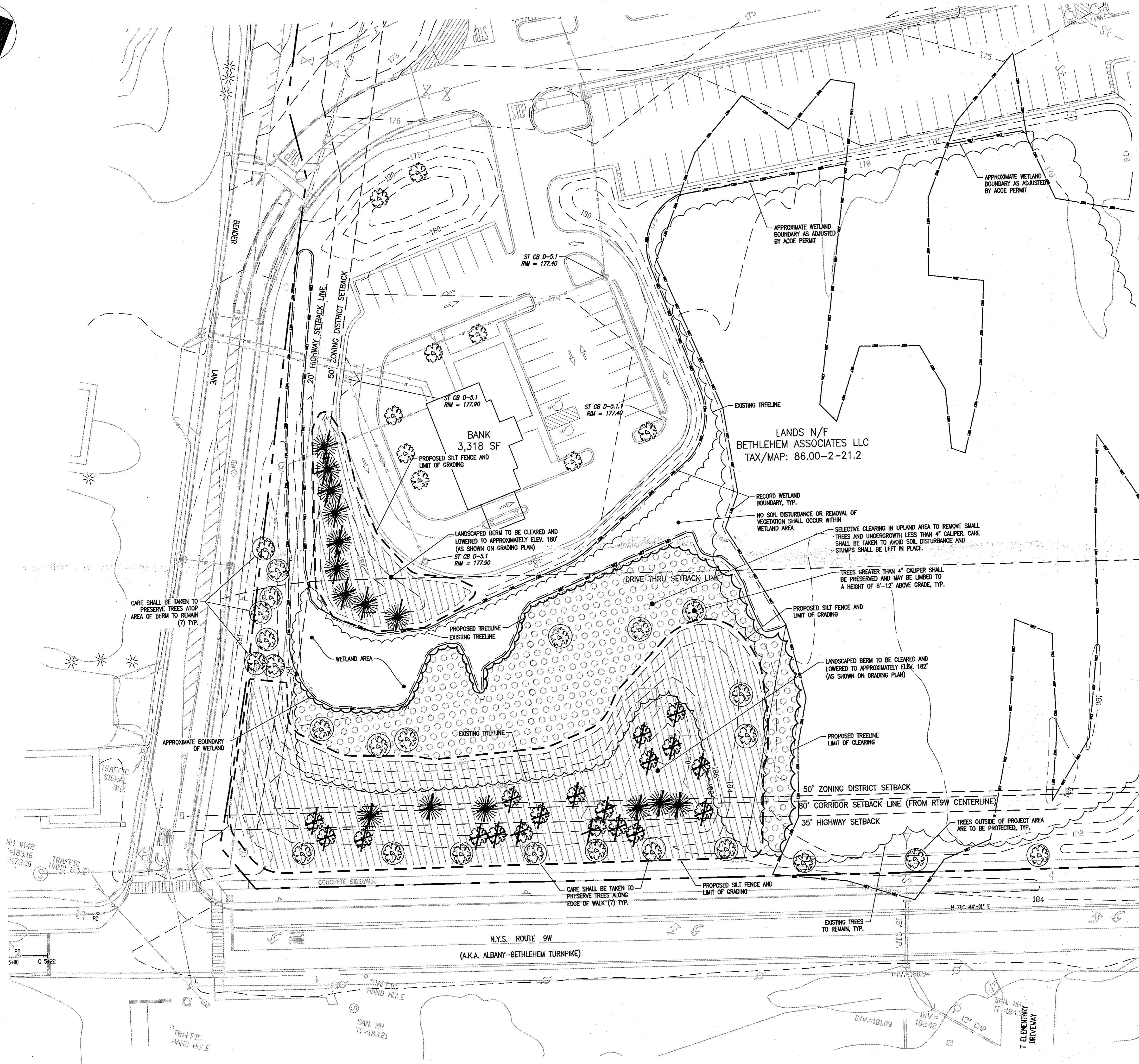
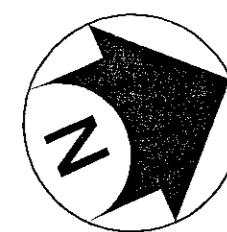
Project Manager:
G. URSprung, P.E.
Designed by:
J. O'CONNOR, PE
Drawn by:
J. O'CONNOR, PE
Checked by:
G. URSprung, PE
Date Issued:
OCTOBER 3, 2012
Scale:
1" = 30'

Project Number:
9337.01
File Name:
9337_C100.DWG

Drawing Number:

C100

3 of 5



SITE CLEARING PLAN
1"=30'

INCHES
Town of Bethlehem, NY