

PROFESSIONAL SEAL



REVISIONS

NO.	DESCRIPTION

PROJECT NO: 38397178
 DRAWN BY: A.R.Z.
 DESIGNED BY: A.R.Z.
 CHECKED BY: M.K.C.

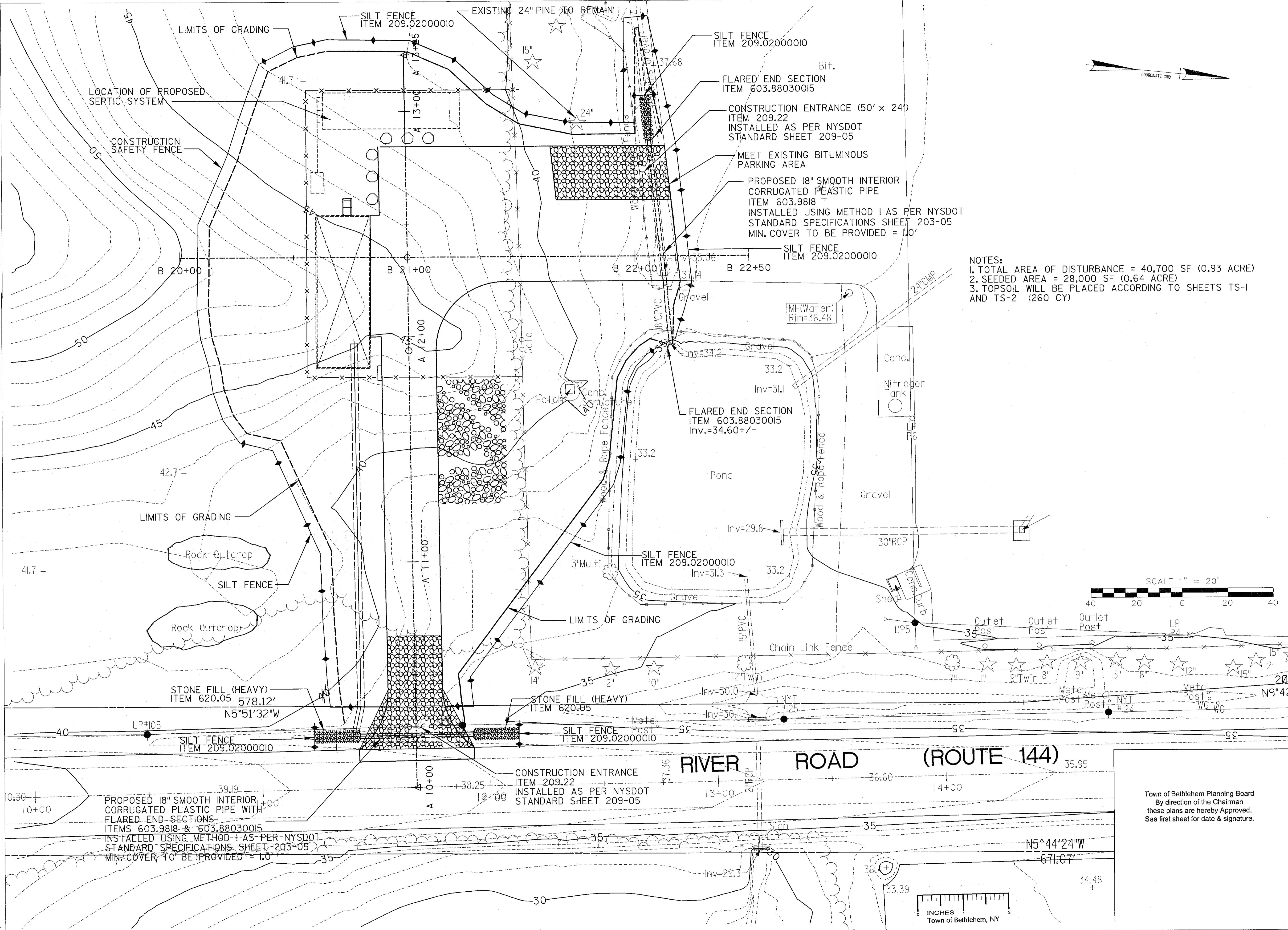
THE INFORMATION CONTAINED IN THIS SET OF DOCUMENTS IS PROPRIETARY BY NATURE. ANY USE OR DISCLOSURE OTHER THAN THAT WHICH RELATES TO THIS PROJECT IS STRICTLY PROHIBITED.

PROPOSED ENTRANCE AND PARKING IMPROVEMENTS
GLENMONT, N.Y.
 461 RIVER ROAD (ROUTE 144)
 GLENMONT, NEW YORK

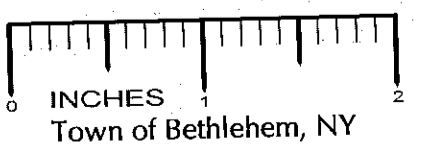
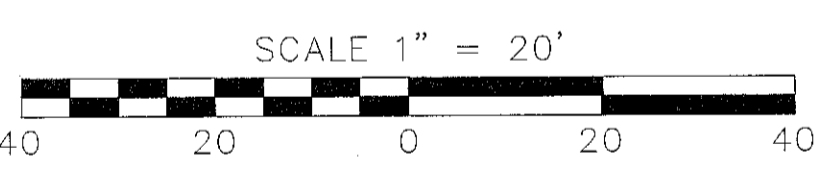
EROSION CONTROL PLAN

SCALE: 1" = 20'
 DATE: 5/22/2013
 DRAWING 11 OF 13

ECP-1



NOTES:
 1. TOTAL AREA OF DISTURBANCE = 40,700 SF (0.93 ACRE)
 2. SEEDED AREA = 28,000 SF (0.64 ACRE)
 3. TOPSOIL WILL BE PLACED ACCORDING TO SHEETS TS-1 AND TS-2 (260 CY)



Town of Bethlehem Planning Board
 By direction of the Chairman
 these plans are hereby Approved.
 See first sheet for date & signature.

5/22/2013 J:\38397178 Air Products Access Road Site Design\5.0 CAD\Re-Start_05_2012\38397178_esp.dgn