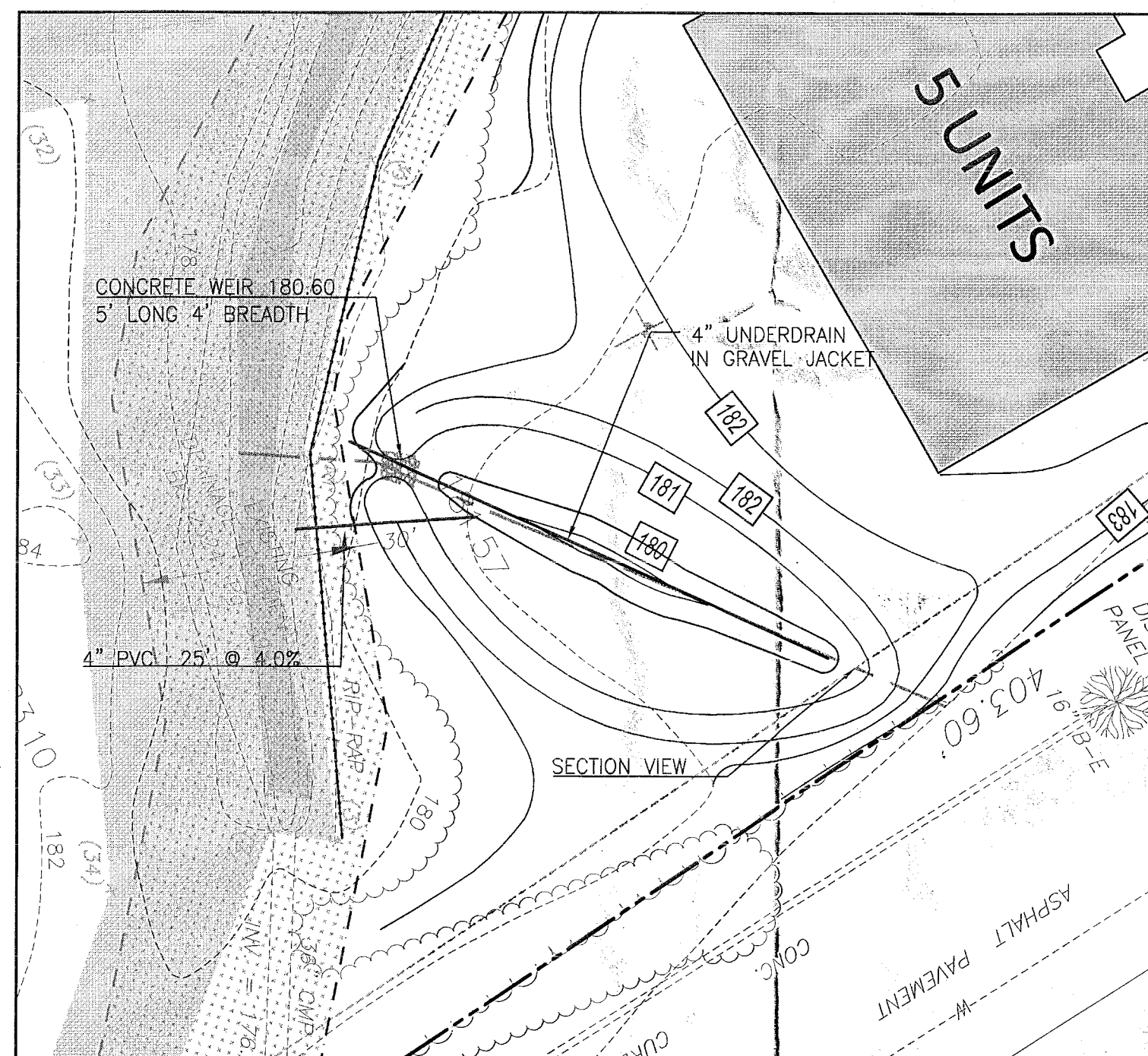


CONSTRUCTION SPECIFICATIONS

- STONE WILL BE PLACED ON A FILTER FABRIC FOUNDATION TO THE LINES, GRADES AND LOCATIONS SHOWN IN THE PLAN.
- SET SPACING OF CHECK DAMS TO ASSURE THAT THE ELEVATIONS OF THE CREST OF THE DOWNSTREAM DAM IS AT THE SAME ELEVATION OF THE TOE OF THE UPSTREAM DAM.
- EXTEND THE STONE A MINIMUM OF 1.5 FEET BEYOND THE DITCH BANKS TO PREVENT CUTTING AROUND THE DAM.
- PROTECT THE CHANNEL DOWNSTREAM OF THE LOWEST CHECK DAM FROM SCOUR AND EROSION WITH STONE OR LINER AS APPROPRIATE.
- ENSURE THAT CHANNEL APPURTENANCES SUCH AS CULVERT ENTRANCES BELOW CHECK DAMS ARE NOT SUBJECT TO DAMAGE OR BLOCKAGE FROM DISPLACED STONE. MAXIMUM DRAINAGE AREA 2 ACRES.

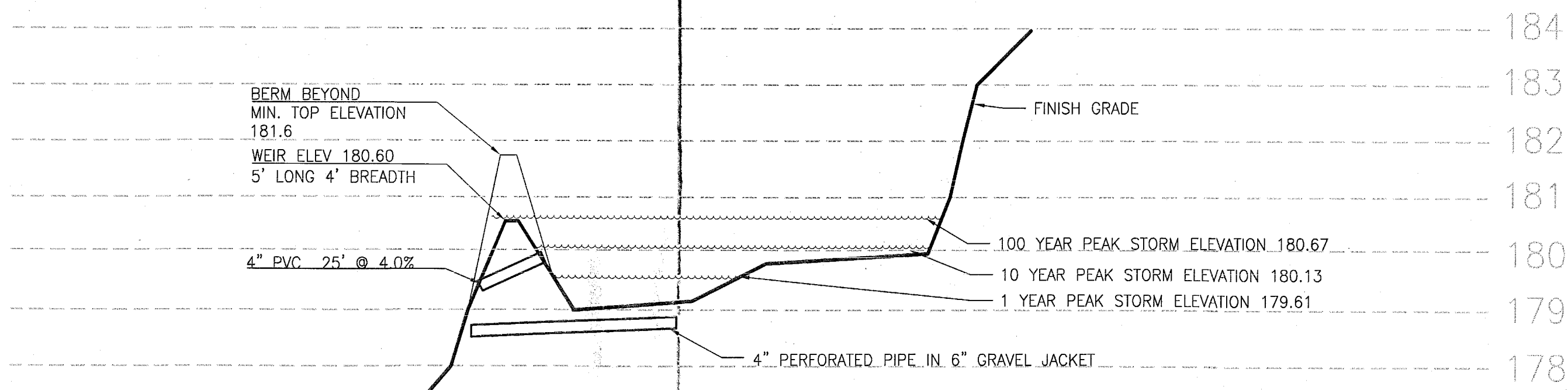
3 TYPICAL STONE CHECK DAM

N.T.S.



STORM WATER MANAGEMENT (EAST) – PLAN

SCALE: 1" = 20'



STORM WATER MANAGEMENT (EAST) – SECTION

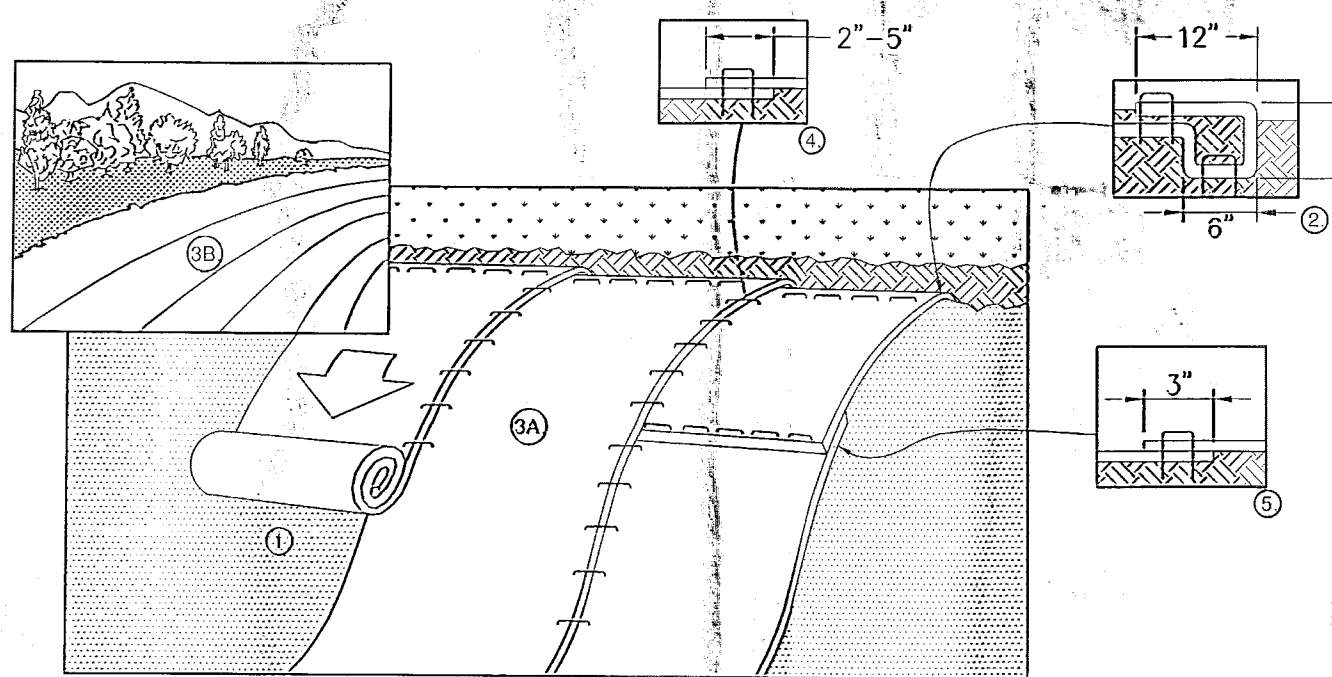
1" = 2' VERTICAL, 20' HORIZONTAL

NOTES:

- PREPARE SOIL BEFORE INSTALLING BLANKETS, INCLUDING ANY NECESSARY APPLICATION OF LIME, FERTILIZER, AND SEED. WHEN USING CELL-O-SEED DO NOT SEED PREPARED AREA. CELL-O-SEED MUST BE INSTALLED WITH PAPER SIDE DOWN.
- BEGIN AT THE TOP OF THE SLOPE BY ANCHORING THE BLANKET IN A 6" DEEP X 6" WIDE TRENCH WITH APPROXIMATELY 12" OF BLANKET EXTENDED BEYOND THE UP-SLOPE PORTION OF THE TRENCH. ANCHOR THE BLANKET WITH A ROW OF STAPLES/STAKES APPROXIMATELY 12" APART IN THE BOTTOM OF THE TRENCH. BACKFILL AND COMPACT THE TRENCH AFTER STAPLING. APPLY SEED TO COMPACTED SOIL AND FOLD REMAINING 12" PORTION OF BLANKET BACK OVER SEED AND COMPACTED SOIL. SECURE BLANKET OVER COMPACTED SOIL WITH A ROW OF STAPLES/STAKES SPACED APPROXIMATELY 12" APART ACROSS THE WIDTH OF THE BLANKET.
- ROLL THE BLANKETS (A) DOWN OR (B) HORIZONTALLY ACROSS THE SLOPE. BLANKETS WILL UNROLL WITH APPROPRIATE SIDE AGAINST THE SOIL SURFACE. ALL BLANKETS MUST BE SECURELY FASTENED TO SOIL SURFACE BY PLACING STAPLES/STAKES IN APPROPRIATE LOCATIONS AS SHOWN IN THE STAPLE PATTERN GUIDE. WHEN USING OPTIONAL DOT SYSTEM, STAPLES/STAKES SHOULD BE PLACED THROUGH EACH OF THE COLORED DOTS CORRESPONDING TO THE APPROPRIATE STAPLE PATTERN.
- THE EDGES OF PARALLEL BLANKETS MUST BE STAPLED WITH APPROXIMATELY 2"-5" OVERLAP DEPENDING ON BLANKET TYPE. TO ENSURE PROPER SEAM ALIGNMENT, PLACE THE EDGE OF THE OVERLAPPING BLANKET (BLANKET BEING INSTALLED ON TOP) EVEN WITH THE COLORED SEAM STITCH+ ON THE PREVIOUSLY INSTALLED BLANKET.
- CONSECUTIVE BLANKETS SPICED DOWN THE SLOPE MUST BE PLACED END OVER END (SHINGLE STYLE) WITH AN APPROXIMATE 3" OVERLAP. STAPLE THROUGH OVERLAPPED AREA, APPROXIMATELY 12" APART ACROSS ENTIRE BLANKET WIDTH. IN LOOSE SOIL CONDITIONS, THE USE OF STAPLE OR STAKE LENGTHS GREATER THAN 6" MAY BE NECESSARY TO PROPERLY SECURE THE BLANKETS.

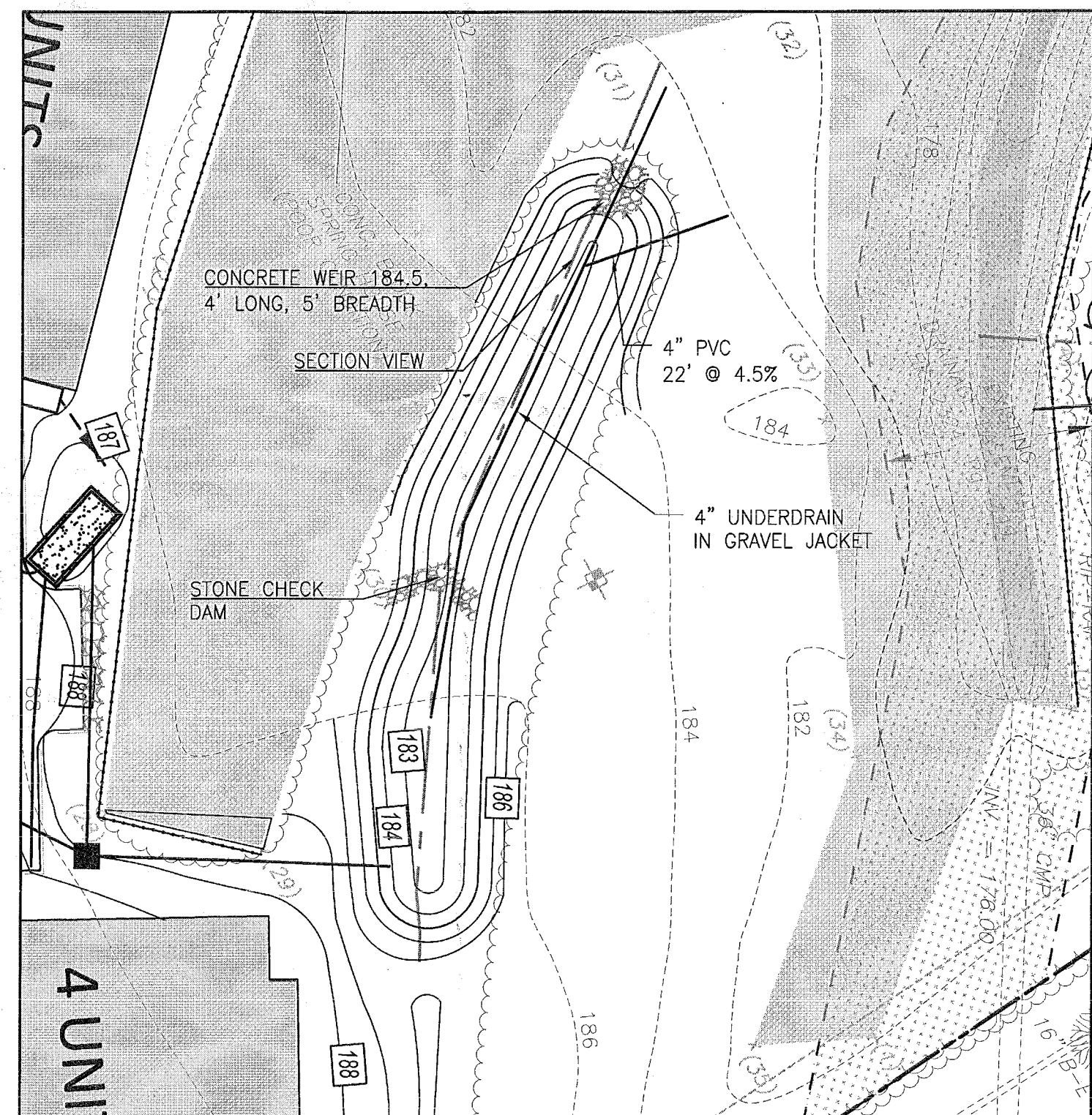
2 EROSION CONTROL BLANKET STABILIZATION DETAIL

N.T.S.



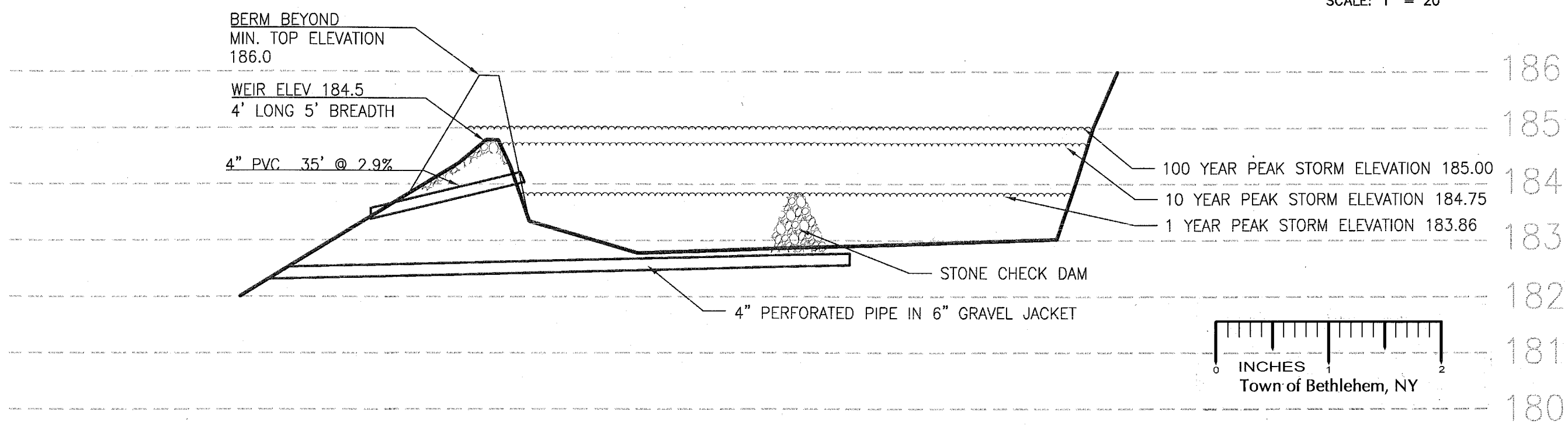
SYMBOL	GREEN PRACTICE	SUGGESTED TEXT
PL	PLANTER	STORMWATER PLANTER, RECEIVES ROOF TOP RUNOFF, DO NOT DISTURB PLANTS OR SOILS
PP	POROUS PAVEMENT	POROUS PAVEMENT – RAISE PLOW 2" DURING SNOW REMOVAL, VACUUM TO CLEAN ANNUALLY
BR	BIORETENTION PLANTER	BIORETENTION PLANTER, FILTERS PARKING RUNOFF, DO NOT DISTURB PLANTS, MONITOR ANNUALLY
VS	VEGETATED SWALE	VEGETATED SWALE MAINTAIN GRASS HEIGHT AT 4 – 6", REMOVE SEDIMENTATION, REPAIR RILLS

1 GREEN PRACTICES SIGNAGE TABLE



STORM WATER MANAGEMENT (WEST) – PLAN

SCALE: 1" = 20'



STORM WATER MANAGEMENT (WEST) – SECTION

1" = 2' VERTICAL, 20' HORIZONTAL

GORDON RESIDENTIAL DEVELOPMENT

FEURA BUSH ROAD APARTMENTS
408, 410 FEURA BUSH ROAD
BETHLEHEM, NEW YORK

DETAILS 4

CD-4

SHEET NUMBER 12 of 13

UNAUTHORIZED ALTERATION OR ADDITION TO THIS DOCUMENT IS A VIOLATION OF APPLICABLE STATE AND LOCAL LAWS

Drawing Copyright © 2011 Creighton Manning Engineering, LLP

DATE: 06-17-12

CME No.: 112-022

SCALE: AS NOTED

DESIGNED: LS

DRAWN BY: T.A.R.

CHECKED: M.B.T.

Last Saved by: Ted Farnsworth
 Plot Date: October 9, 2013 10:48 AM
 File Name: F:\Projects\2012\112-022 Feurabush Apartments\dwg\CD-4 DETAILS 4.dwg

Town of Bethlehem Planning Board
 By direction of the Chairman
 these plans are hereby Approved.
 See first sheet for date & signature.