



WinCan ScanExplorer 2.7 User Manual

17/01/2012

1	Introduction	5
1.1	Principle Overview.....	5
1.2	Prerequisites	5
1.3	ScanExplorer Module License.....	6
1.4	Installation	6
1.4.1	Module Installations	6
2	Create a Scan	7
2.1	Starting a Scanner Application	7
2.1.1	Starting the DigiSewer Scanning Application	7
2.1.2	Starting the Rico RPP Scanning Application	7
2.1.3	Starting the IBAK Panorama Scanning Application	8
3	Open a Scan in ScanExplorer	9
3.1	View the Scan Column	9
3.2	Import a Scan	10
3.2.1	Multiple Scans per WinCan Inspection	11
3.2.2	External Scan Path.....	11
3.3	Showing a Scan in the standalone ScanExplorer.....	11
3.4	ScanExplorer Windows	11
3.4.1	Main Window.....	11
3.4.2	Overview Window	12
3.4.3	Sectionview Window	13
3.4.4	Front Windows	13
3.5	Window Layouts	15
4	Navigation.....	16
4.1	Current Position.....	16
4.2	Changing the Position.....	16
4.3	Changing the View Direction in the front window (Panorama)	17
4.3.1	Entering the Total view.....	17
4.3.2	Navigating in the Total view	17
4.3.3	Exiting the Total view	17
4.4	Front- and Backview Correction (DigiSewer & Panorama).....	18
4.5	Shifting along the distance ruler.....	18
4.6	Scrolling with the vertical scrollbar	18
4.7	Zooming	20
4.7.1	Zoom Lense Tool	20
4.8	Inclination & Height Chart	21
5	Creating Graphics & WinCan Observations.....	22
5.1	Creating Graphics	22
5.1.1	Graphics in the Sidescan Drawing Mode.....	22
5.1.2	Graphics in the Cross Section Mode.....	22
5.1.3	Accuracy of Measurement	24
5.1.4	Graphic Properties	25

5.2	Editing Graphics	26
5.2.1	Selecting a Graphic	26
5.2.2	Deselecting a Graphic.....	26
5.2.3	Moving, Editing and Deleteing a Graphic.....	26
5.2.4	Changing the Graphics Pen & Frame	27
5.2.5	Changing the Font	27
5.2.6	Graphic Offset in the Front View	27
5.3	Creating a Graphic with WinCan Observation	29
5.3.1	Displaying additional database information in the graphic's label	30
5.4	Creating Observation with automatic Pictures.....	30
5.5	Video Markers for Rico RPP	31
6	Printing Reports	32
6.1	ScanExplorer Overview Report in WinCan	32
6.2	Graphic Report in ScanExplorer	33
7	ScanExplorer Post Processing (DigiSewer)	35
8	Analysing a Scan.....	38
8.1	Starting the WinCan Scan Analyser	38
8.1.1	Scan Analyser: Straighten Joints	39
9	Menu Commands	41
9.1	Menu File	41
9.1.1	Open.....	41
9.1.2	Save	41
9.1.3	Close.....	41
9.1.4	Start Scan Analyser	41
9.1.5	Load Analyser Objects	41
9.1.6	Inspection Information	41
9.1.7	Start Post Process (only DigiSewer)	41
9.1.8	Delete old Sidescans (only DigiSewer).....	41
9.1.9	Preferences.....	42
9.1.10	Print.....	42
9.1.11	Exit.....	42
9.2	Menu Edit.....	42
9.2.1	Drawing Modes.....	42
9.2.2	Drawing Tools	42
9.2.3	Delete	42
9.2.4	Delete multiple graphics	42
9.2.5	Change Pen and Framesize	42
9.2.6	Change Font	42
9.3	Menu View	42
9.3.1	Hide all graphics.....	42
9.3.2	Show inclination chart	42
9.3.3	Show height chart.....	42
9.3.4	Unit > Meter/Feet	42
9.3.5	Zoom	42
9.3.6	Sidescan View Direction.....	43
9.3.7	Reset Distance Scale Shift	43
9.3.8	Reset Clock Scale Shift	43

9.3.9	Reset Clock Shift (Scrollbar).....	43
9.3.10	Invert Distance.....	43
9.3.11	Show Colormap for Radius Scans.....	43
9.4	Menu Navigation.....	43
9.4.1	Go to the next graphic.....	43
9.4.2	Go to the previous graphic.....	43
9.4.3	Go to the scan start	43
9.4.4	Go to the scan end.....	43
9.4.5	Mouse wheel direction	43
9.5	Menu Window	43
9.5.1	Overview Window	43
9.5.2	Frontview Window	43
9.5.3	Sectionview Window	43
9.5.4	3D-Window	44
9.5.5	Panorama Viewer Window (Panorama)	44
9.5.6	Applying a window layout	44
9.5.7	Save the current window layout.....	44
9.5.8	Save as new window layout	44
9.5.9	Delete window layout	44
9.5.10	Bring windows to front together.....	44
9.5.11	Move all windows with main window	44
9.5.12	Do magnetic resize & move.....	44
9.5.13	Show Toolbar	44
9.5.14	Change Language	44
9.6	Menu Help.....	44
9.6.1	About ScanExplorer.....	44
9.6.2	Version.....	44
9.6.3	Show the Quick Help Window	44
9.6.4	Open ScanExplorer Documentation (PDF)	45
9.7	Menu Panorama.....	45
9.7.1	Panorama Viewer Settings	45
9.7.2	Show 3D-Measurements	45
9.7.3	Edit 3D-Measurements	45
9.7.4	Open Pointcloud	45
9.7.5	Panorama Viewer Help	46
10	Appendix	47
10.1	INI-File Parameters.....	47
10.2	Document History	49

1 Introduction

Welcome to the **WinCan ScanExplorer Module**. This user manual gives you all necessary information how to use this module together with WinCan8.

It does NOT contain any information about the creation of a scan because this depends on the scanning application. The WinCan ScanExplorer is compatible to the following sidescan systems:

- *DigiSewer* (Module *WinCan DigiSewer*)
- *Rico RPP* (Module *WinCan RPP*)
- *IBAK Panorama & PanoramaSI* (Module *WinCan Panorama*)
- *Rausch PanCam* (Module *WinCan PanCam*)
- *Radius Scans* (Module *WinCan LaserScan*)

1.1 Principle Overview

What are side scans? To understand the basic principles see the following graphic. Scanner applications of the above mentioned systems produce so-called *sidescans* from the inner surface of the inspected pipe as if you would unfold the pipe into a two-dimensional image:

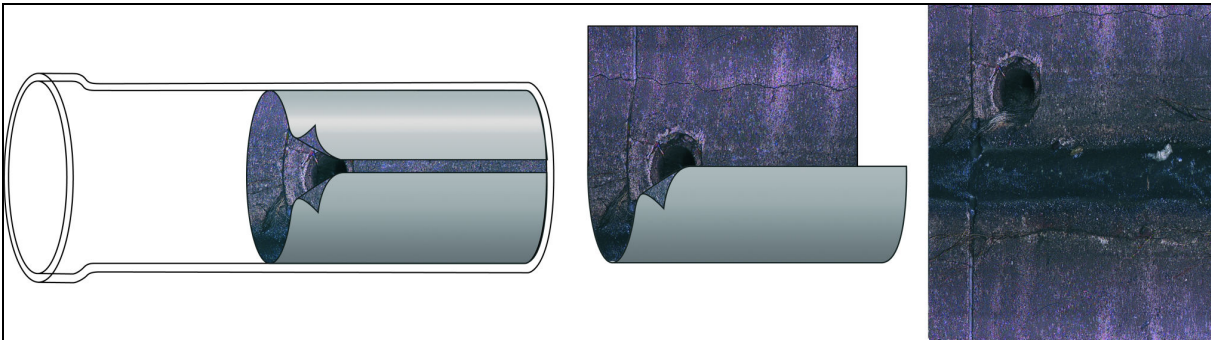


Figure 1: Unfolding the inner pipe surface into a 2D image

The advantage of this method is that you can document and view the pipe surface in one big image. Another advantage is that you can measure real distances and areas on the pipe surface which is not possible in classic video based inspection. In the first moment this unfolded pipe view may appear unusual but after a while you will see that it represents a very fast and precise view of the pipe condition.

1.2 Prerequisites

WinCan8 and the ScanExplorer module need to be installed on a standard Windows PC with the following minimal requirements:

- Microsoft Windows XP SP3 or newer operation system. 32 or 64 bit Windows operating systems are ok.
- Min. 2 GB of RAM
- Intel CPU is recommended. The ScanExplorer profits from multiple core processors.
- Dedicated DirectX 9 (or newer) capable graphic card with min. 2 monitor outputs. Onboard graphic accelerators are NOT recommended.
- One monitor with min. 1920 x 1080 resolution or two monitors with min. 1280 x 1024 resolution are recommended.
- Min. 100 GB free hard disc space
- A 3-button mouse with mouse wheel in the center.
- At least 2 USB-2 connectors.

1.3 ScanExplorer Module License

- For the full ScanExplorer functionality one has to buy the [WinCan ScanExplorer Module License](#).
- Without this license an installed ScanExplorer runs only in a viewer mode, in which no modifications (creating and changing graphic, scan analysis) can be done.
- The ScanExplorer is independent from the modules [WinCan DigiSewer Scanner](#), [WinCan Panoramo Scanner](#) and [WinCan RPP Scanner](#). These modules are needed, for starting the according scanner applications from within WinCan8.
- In a car where only the scans are produced and no coding is done in WinCan there is no ScanExplorer license needed. If the ScanExplorer is installed you can only open a scan in the viewer mode and check its quality.

1.4 Installation

All the required installation files can be downloaded from the WinCan web site:

<http://www.wincan.com> and the menu Support > Updates. To have access you need a registered username and password that can be requested from support@wincan.com.

You find all the modules required for the WinCan DigiSewer under the tree menu under [Connectivity modules > WinCan Scan Technologies](#):

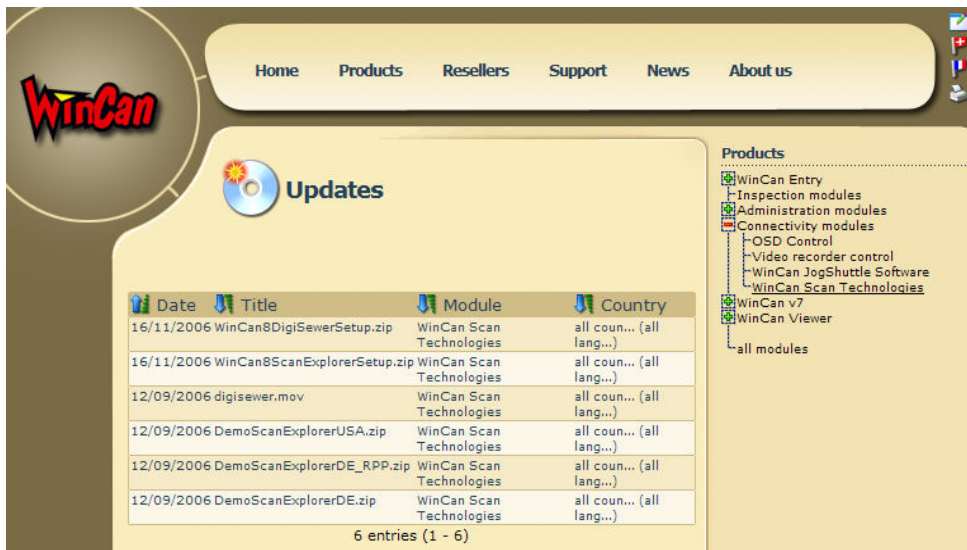


Figure 2: WinCan download page under Support > Upgrades.

1.4.1 Module Installations

To install the WinCan ScanExplorer module please precede the following steps that need all Administrator rights on the PC in the following order:

1. Execute the **WinCan8CoreSetup.exe**. The core setup contains all the needed windows controls, runtimes, drivers and database clients. This core setup must be installed first. Reboot afterwards.
2. Execute the **DotNetFx2.0.exe** that installs the Microsoft DotNet framework 2.0.
3. Execute the **DirectXRedist.exe** and extract the installation files into a temporary directory. Run DXSETUP.exe that installs the Microsoft DirectX redistributables.
4. Execute the **WinCan8Setup.exe**. This installs the WinCan8 main application, the WinCan Viewer and the ScanExplorer.

For more details on administration and installation detail please refer to the WinCan8 administration manual.

2 Create a Scan

2.1 Starting a Scanner Application

For a tight integration of the different scanning technologies (DigiSewer, RPP and IBAK Panorama) it is recommended to launch the according Scanner application from within WinCan8 with the button:



If you have several scanning modules licensed a dialog appears where you have to choose the appropriate scanner application. For scanning applications in common is that specific section and inspection parameters are passed over to the scanner application and that WinCan8 is sent to sleep during the scanning process. After the scanning process WinCan8 comes back and has the scanned data in the following directory of the current WinCan8 project:

```
(WinCan8ProjectFolder)
> ScanExplorer
> (SectionAutoNumber)_(InspectionAutonumber)_(ObservationAutonumber)
```

The subfolder `\(SectionAutoNumber)_(InspectionAutonumber)_(ObservationAutonumber)` can not be changed. The auto numbers of section, inspection and observation where chosen for the folder name because this identifiers are always set and will remain also when sections, inspections or observations in between are deleted.

2.1.1 Starting the DigiSewer Scanning Application

Please refer to the WinCan8 DigiSewer manual for more details on this scanning application. After the scan has been created the data is stored as follows:

```
(WinCan8ProjectFolder)
> ScanExplorer
> (SectionAutoNumber)_(InspectionAutonumber)_(ObservationAutonumber)
> FRONTVIEW (folder with all frontviews)
> SIDESCAN (folder with all sidescans)
> HEADER_DS2.txt (header file used to open ScanExplorer)
```

2.1.2 Starting the Rico RPP Scanning Application

Please refer to the Rico RPP manual for more details on this scanning application. After the scan has been created the data is stored as follows:

```
(WinCan8ProjectFolder)
> Video
> *.mpg (VideoFile that was captured during the scan)
> *.txt (Time-distance file that was captured during the scan)
> ScanExplorer
> (SectionAutoNumber)_(InspectionAutonumber)_(ObservationAutonumber)
> SIDESCAN (folder with all sidescans)
> HEADER_RPP.txt (header file used to open ScanExplorer)
```

2.1.3 Starting the IBAK Panorama Scanning Application

Before starting the Panorama Scanner it is mandatory to enter the pipe diameter in the section data as well as the inspection direction in the inspection data.

In addition you have to enter once a valid path for the raw scanning data into the *INI/W8Settings.ini* file:

```
...
[Panorama]
PanoramaRawDataPath=d:\Panorama\
...
```

With this entry the raw data of a Panorama scan will be stored in the folder:

```
(PanoramaRawDataPath)
> (ProjectName)
> > Panorama_(S#)_(I#)_(O#) (folder with the raw scan data)
```

- **In the Camera Settings dialog do NOT choose the option for Reverse Scan:**

In the Panorama Camera Settings dialog you should NOT choose the option for *reverse scan*. This is not necessary with WinCan8 and causes the scanner to rename the raw data folder.

- **Generate the IPF-file after the scan process:**

The IPF-file contains all image data packed in one file. This means that the image data exists now twice: Once in the raw data folder and once in the IPF-file.

After closing the Panorama scanner WinCan will copy only the IPF-file into the WinCan project folder:

```
(WinCan8ProjectFolder)
> ScanExplorer
> (SectionAutoNumber)_(InspectionAutonumber)_(ObservationAutonumber)
> > SIDESCAN (Folder for the sidescan minifications)
> > Panorama_(S#)_(I#)_(O#).ipf (Panorama IPF file)
> > *.inc (Inclination file)
> > HEADER_IPF.txt (Header file for ScanExplorer)
```

- **Generating all IPF-files of multiple scans at once:**

You can create multiple scans without generating the IPF right afterwards. In this case no IPF is integrated after finishing the single scan. After the last scan is made the Panorama scanner can produce unfolds and IPF-files of all those scans together at once. After closing the scanner, all IPF-files will be moved and attached correctly in the WinCan project.

- **Option Panorama Scanning without sleeping WinCan8:**

If you place the following entry into the *INI/W8Settings.ini* file:

```
...
[Panorama]
DoPanoramaScanWithoutSleep=True
...
```

WinCan8 will not anymore fall asleep after starting the Panorama scanner. This allows you to continue to work in WinCan while the scanner application is running. We do not recommend this option because the Panorama scanner deserves all the operators' attention. The IPF-files generated with this option are loaded by double clicking the red bullet in the scan column.

3 Open a Scan in ScanExplorer

3.1 View the Scan Column

Before you can open or import a scan we need to show the ScanExplorer database column in the observation column. After starting WinCan8 you have to log in with a username and password and open a new WinCan project. Please refer the WinCan8 Entry manual for more details about these steps. After this the WinCan8 application screen looks as follows:

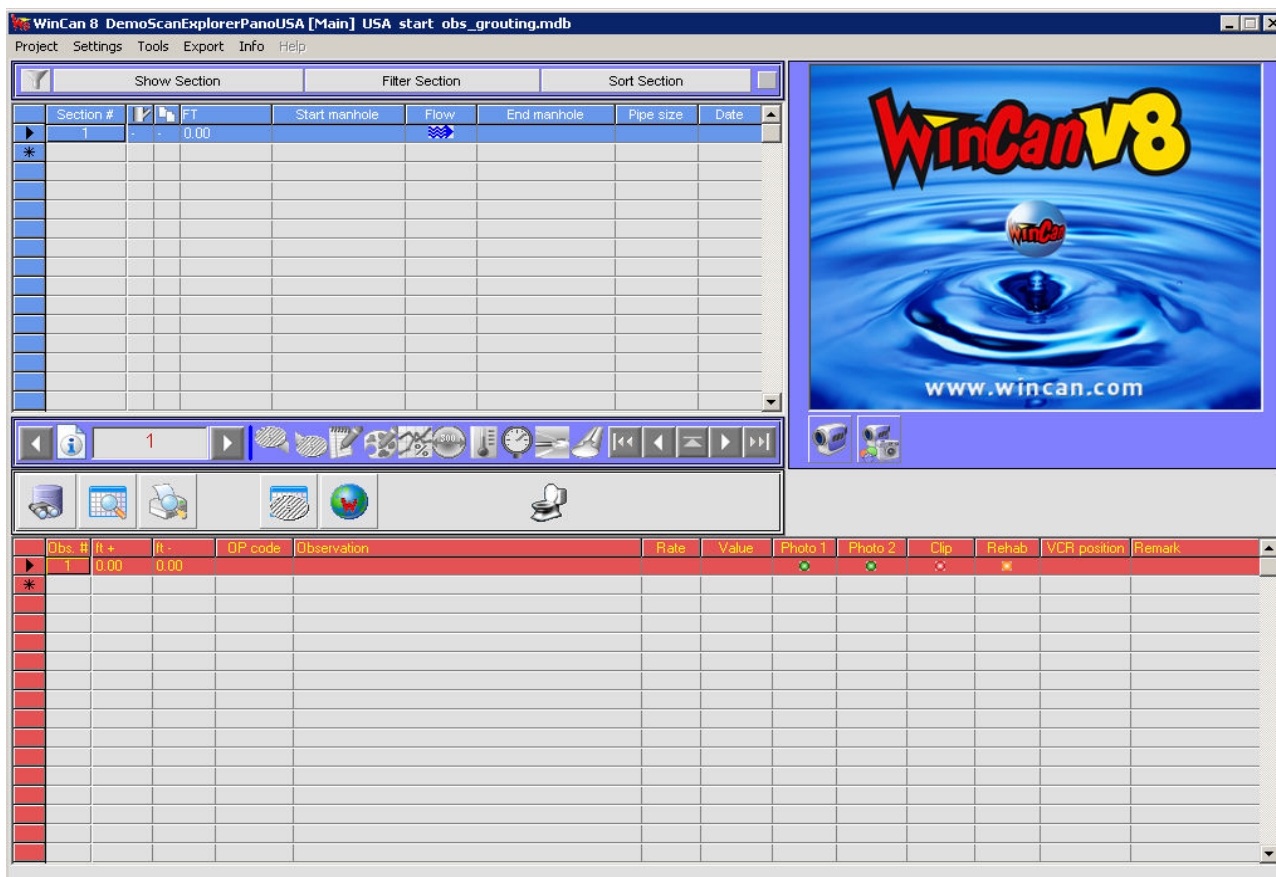


Figure 3: WinCan8 Main Screen

Show the Scan column:

After the start-up the columns in the different grids of WinCan8 appear as they are defined in the selected template. Please read the WinCan8 Administration manual for more details about templates and their modification. After the first start-up we need to add the ScanExplorer column in the observation grid. In our example we replace the last column (MPEG Counter).

With pressed Control-Key click with the mouse pointer on the header of the column MPEG-Counter. This opens the Template-Settings dialog:



ScanEX	▲

- **HEADER_DS2.txt** (project file for DigiSewer2 scans)
- **HEADER_RPP.txt** (project file for RPP scans)
- **HEADER_IPF.txt** (project file for Panoramio scans)
- ***.ipf** (IBAK Panoramio scan files): This import automatically creates the correct HEADER_IPF.txt project file.
- **HEADER_R3D.txt** (project file for a Rausch PanCam scan that was already once imported in ScanExplorer)
- ***.R3D** (Rausch PanCam scan files): The ScanExplorer imports all image files and creates the appropriate HEADER_R3D.txt files

(WinCan8ProjectFolder)\ScanExplorer\ (SectionAutoNumber)_ (InspectionAutonumber)_ (ObservationAutonumber)

The copy process can last a few minutes depending on the size of the scan. After the import the ScanExplorer is automatically started and in the cell where the scan is attached you can see the scan icon:



3.2.1 Multiple Scans per WinCan Inspection

It is possible to import in WinCan several scans per inspection. This means that you can have in the red observation grid in several observations a scan attached. Please consider the following points:

- This only makes sense if you have to create multiple scans per inspection. This can be the case, if e.g. the scan file size exceeds a maximum file size.
- For an opposite inspection you have to make a 2nd inspection in WinCan (s. the WinCan manual).
- It is in your responsibility that the start and end distances of the scans do not overlap or only have a minimal overlap.
- Joining several inspections in WinCan with scans is not implemented.

3.2.2 External Scan Path

For archiving purpose it may be useful to store scans or videos outside of a WinCan project on a dedicated server. You can set this by adding e.g. the following entries into the [W8settings.ini](#) file:

```
[Environment]
...
SideScanFilePath=s:\Scans
ClipFilePath=v:\Videos
```

Do NOT set these external paths on a PC in the truck where you create the scans.

3.3 Showing a Scan in the standalone ScanExplorer

The ScanExplorer also exists as a standalone application in the WinCan installation directory: [\(Program Files\)\WinCan v8\WinCan\WinCanScanExplorerStandalone.exe](#)

With the menu command [File > Open](#) you can open and view a scan in the ScanExplorer but you can not create and save graphics. You can only do this when you start the ScanExplorer as component from within WinCan8.

3.4 ScanExplorer Windows

The ScanExplorer shows up in the original state with 4 windows above WinCan8 on a minimal screen size of 1024x768 pixels.

Effectively working with WinCan8 & ScanExplorer definitely requires two screens in the dual view mode. You can work on one screen with a minimal resolution but it is not recommended. If you do so you always have to switch WinCan8 or the ScanExplorer to the front or to the back.

3.4.1 Main Window

The ScanExplorer is open and running when at least this window is open. It shows the full resolution of the unfolded sidescan image with a distance ruler on top of it and a clock hour scale on the left border of the window. On top of the sidescan you can find the toolbar and on top of this the menu bar:

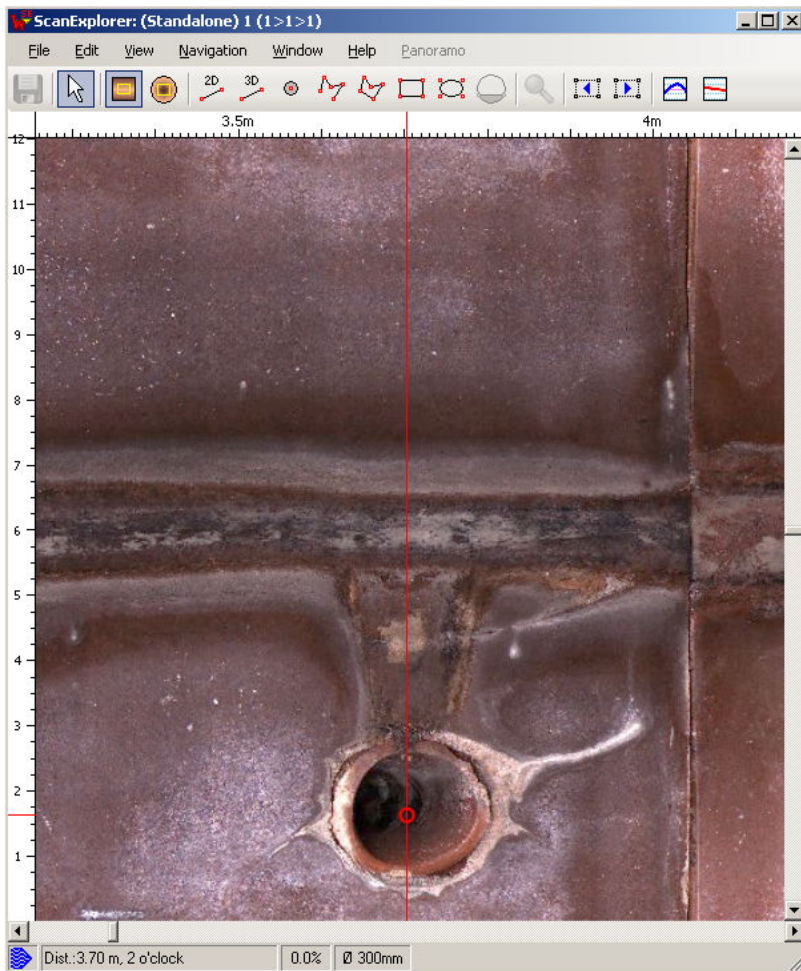


Figure 7: ScanExplorer Main Window

3.4.2 Overview Window

This window shows the minification of all sidescan images together. All images are loaded all the time. This window is available for all scan systems. The height of the sidescan can be adjusted over the context menu. The images will be regenerated and saved for this. Because of that the resizing option is only available if the data is stored on a harddisc and not on a DVD.



Figure 8: Overview Window

3.4.3 Sectionview Window

- o Show a vertical graphic of the section with all the graphics and their operation code.
- o Pipe and manholes are graphic symbols and are scaled to their sizes.
- o Scan direction is always top-down.
- o By default the section length is measured between the manholes. Alternatively you can set by the context menu that this length is measured between manhole centre and manhole centre.
- o The section length is transferred from WinCan to the ScanExplorer at its startup. If there are no observations recorded in WinCan the section length is often not set. In this case the ScanExplorer calculates a section length for the section window as scan end distance minus scan start distance. As soon as observations are recorded in WinCan the section length is automatically calculated from WinCan and transferred to the ScanExplorer at its next startup.
The grey shaded part of the pipe in the section window signifies the scanned part of the section.
- o This window is available for all scan systems.
- o **If you export the WinCan project with the WinCan Viewer it is important that you open the ScanExplorer at least once so that the section length from WinCan is written into the header file of the ScanExplorer.**

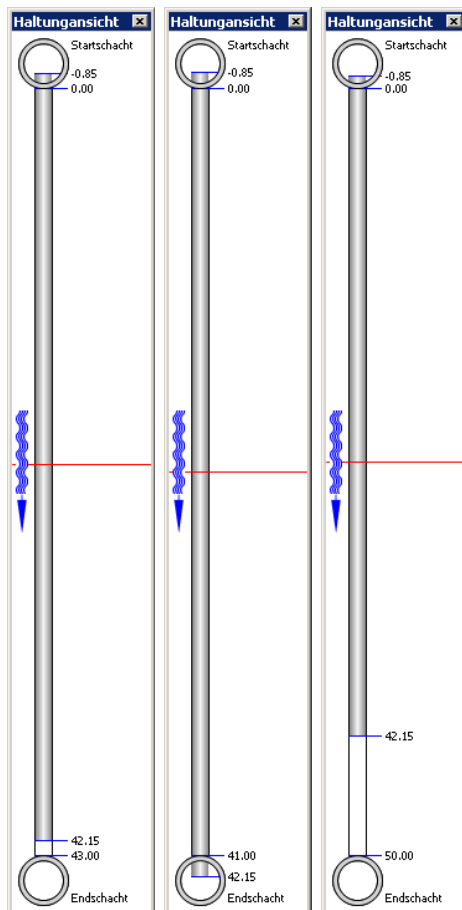


Figure 9: Section window: Left: A raw scan from -0.85m to 42.15m. A provisorily length of 43m is calculated. Middle: After that a section length of 41m where set in WinCan. Right: After that a section length of 50m where set in WinCan.

3.4.4 Front Windows

The sidescan systems differ mostly in different kinds of front views. There are 3 different frontview windows in ScanExplorer:

- **3D View Window (all systems):** This window shows a virtual 3D view created from the sidescan images. The 3D-View window is restricted to the straight forward view direction because this is the only reasonable perspective. Even this perspective is only a virtual and a

near approximation to the "real" reality of circular pipes. It is virtual or artificial because the sidescan images are remapped onto a perfect circular pipe. The generated view of a joint e.g. will be always a perfect circle even if the pipe was deformed in reality.

- **Frontview Window:**

- **DigiSewer:** It shows the current frontview image that was stored ca. every 10cm during the scan. The DigiSewer scanner does not store a video.
- **RPP:** It shows the frontview video that was captured while driving forwards into the pipe
- **Panoramo:** It shows the current frontview image that is usually stored every 5 cm during the Panoram scan. In addition you can switch between the front and the back view image taken at the same position as the frontview image.

- **Panoramo Window:** This virtual 360 degree look around view is provided through a component provided by IBAK Kiel. It allows you to smoothly move forward and backwards as well as free 360 degree rotation of the view direction.

In comparison to the 3D-View window is the view from the Panoram window created from the 2 fisheye images taken to the front and the back of a Panoram camera. The Panoram window provides perspicitvely correct views to ALL possible view direction.

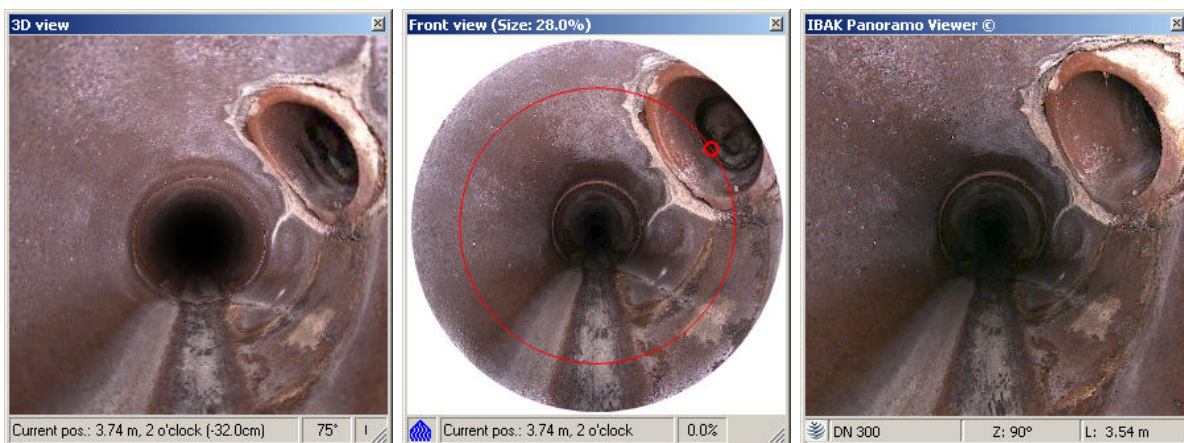


Figure 10: 3 front views at the same position of a Panoram scan: 3D view window (left), front view window (middle) and the Panoram window.

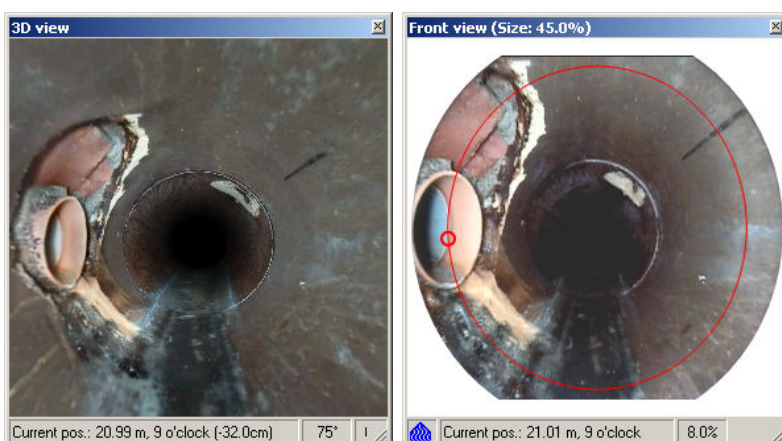


Figure 11: 2 front views at the same position of a DigiSewer scan: 3D view window (left) and the frontview window (right).

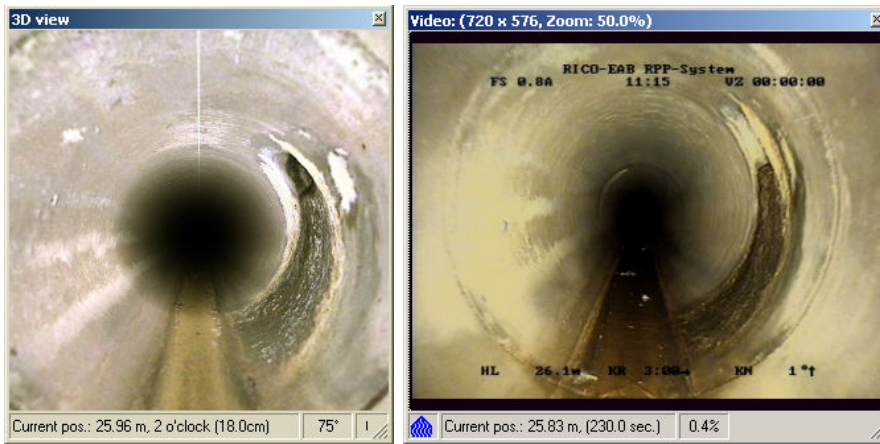


Figure 12: 2 front views at the same position of a Rico RPP scan: 3D view window (left) and the frontview window with the video playback.

3.5 Window Layouts

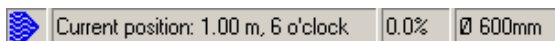
No matter if you have one or more screens where you can position the ScanExplorer windows you can save the settings as a [Window Layout](#). Beside the position different windows it will also store if a window should stay on top of all windows and if a window is open at all. All commands for the window settings can be found under the menu [Window](#).

4 Navigation

This chapter gives you detailed information about how to navigate through a scan and how to use the keyboard and the mouse to do so. For a quick help you can also have a look at the [Help > Quick help window](#) that lists the most important keyboard short cuts and mouse interactions.

4.1 Current Position

- In all windows except the Panorama Viewer window and the video window of RPP, you can see a fine **red line** indicates the current distance in the pipe. The current clock position is marked with a little fat **red circle**.
- All windows are at all times synchronized.
- In the status bar at the lower border of all windows you can see the water flow direction and the current position.



- By default except for projects with the language USA the distances are shown with metric units. You can change this with the menu command [View > Unit > Feet](#).

4.2 Changing the Position

You can change the position in many ways:

- **Left mouse button:**
 - **In the main window:** Moves the clicked position in the sidescan to the centre of the window and moves the little red circle to the according clock position. In the main window the red line that shows the current distance stays always in the centre of the window.
 - **In the overview window:** A click or a move with pressed button repositions the distance line and the little clock position circle to the clicked position in the overview window. The current clipping region from the main window is shown with a dotted red rectangle.
 - **In the frontview window of DigiSewer & Panorama:** Moves the distance circle and the little clock position circle to the clicked spot in the frontview. If another frontview image is closer to the clicked point in the pipe that frontview image changes.
 - **In the Panorama viewer window:** A click and the following drag change the view direction. You can look in any direction that you want. A click on the space bar resets the view to the initial straight forward view.
 - **In the frontview window of RPP:** Resumes or pauses the video frontview. With the context menu command [Show video properties](#) you can open the video property dialog.
 - **Clicking into the position field of the status bar in all windows** opens a dialog where you can enter a desired distance.
- **Right mouse button:**
 - **In the Panorama viewer and 3D-view window:** A click and drag move the current camera position forward and backwards.
 - **In all other windows:** A context menu will be opened.
- **Mouse Wheel:** Moves the current position forwards or backwards:
 - **In all windows:** The distance moved corresponds to distance between two frontviews. By default this distance is set to 10cm. Moving direction can be set with the menu command [Navigation > Mouse wheel direction \(pull\)](#):
 - Pressing the SHIFT-key at the same time moves 1cm.
 - Pressing the ALT-key at the same time increases or decreases an automatic speed. This way the scan moves automatically without interaction.

- Pressing the SHIFT-key at the same time in the 3D window changes the offset distance. Because of the narrower view angle in the 3D window one could not see object to the side of the current position that one would see in the frontview window. The offset distance is shown in round brackets in the position field of the status bar.
- **Keyboard:**
 - **Key Home:** Move to the start of the scan.
 - **Key End:** Moves to the end of the scan.
 - **Key PageUp/PageDown:** Moves one page in the main window forwards or backwards.
 - **In the Panorama window:** The space key resets the view to the straight forward view.

4.3 Changing the View Direction in the front window (Panorama)

For Panorama the frontview window is not only a frontview window but also allows viewing of backview images with exact same functionality. Additionally a *Total View* can be activated which allows 3D-viewing of the pipe as in Panorama Viewer. This fisheye view is a combination out of the frontview and the backview:

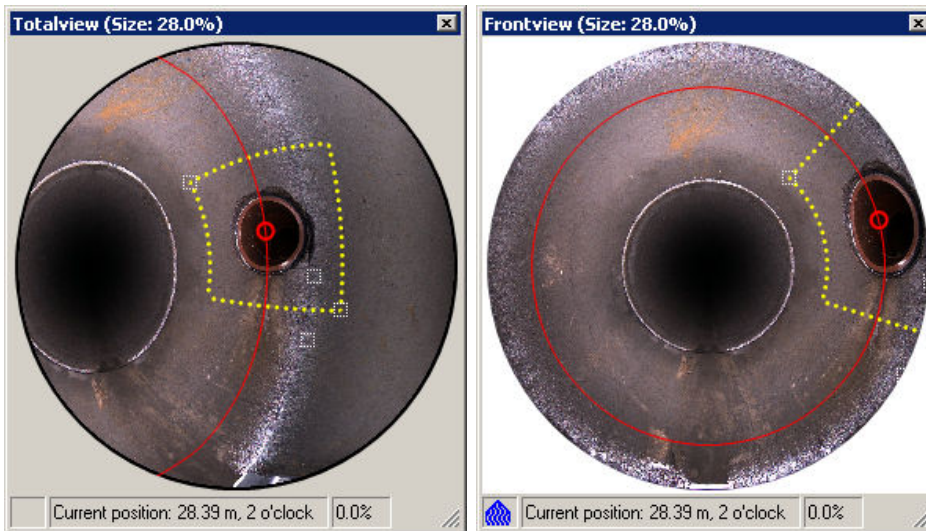


Figure 13: Left: Combined front- and backview as a total view. Right: Standard frontview

4.3.1 Entering the Total view

To enter the total view use any of the navigation options listed below. You will notice that you have entered total view when the flow direction icon at the bottom left of the windows disappears and the surrounded view circle is grey instead of white.

4.3.2 Navigating in the Total view

- **Left mouse button with CTRL-key:** Dragging while CTRL-key is pressed keeps the clicked pixel beneath the mouse pointer.
- **CTRL-key and cursors:** Looks around in pipe by 15 degrees per key press.

4.3.3 Exiting the Total view

For performance reasons it is strongly recommended you exit the Total view to navigate the Pipe.

- **Spacebar:** As in Panorama Viewer the spacebar returns you to looking straight forward. It also exits Look Around Mode.
- **Context menu:** When either front- or backview is selected from the context menu the total view is set back to the chosen standard view.

4.4 Front- and Backview Correction (DigiSewer & Panorama)

Sometimes the DigiSewer & Panorama fisheye lenses are insufficiently calibrated which leads to black borders around the front- or backview. You can correct the centre of the front- or backview by the cursor keys while pressing the ALT-key. The view radius can be adjusted with the cursor left/right keys while pressing the CTRL and the ALT-keys.

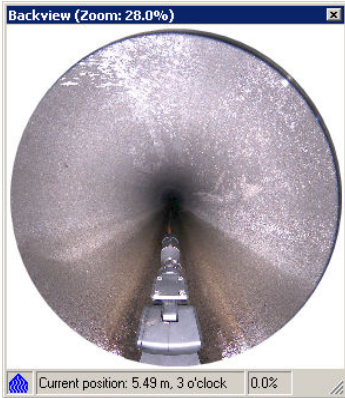


Figure 14: Insufficiently calibrated backview

4.5 Shifting along the distance ruler

The sidescans begin at a distance that was set at the scan was created. This information then is stored within the sidescan filename and can not be changed. If this start distance is not correct you can shift the sidescans along the distance ruler in the main window by pressing & moving the left mouse button within the ruler. A double click resets the original start distance.



Figure 15: Shifting the sidescans along the distance ruler

4.6 Scrolling with the vertical scrollbar

By moving the vertical scrollbar you can change the cut hour of the sidescan image. The same cut hour is applied to the overview window. You can shift the sidescan this way max. +/- 6 hours. You can draw this way a graphic object over the cut hour. A double click on the vertical ruler resets the scrollbar to its default position.

Navigation: Scrolling with the vertical scrollbar

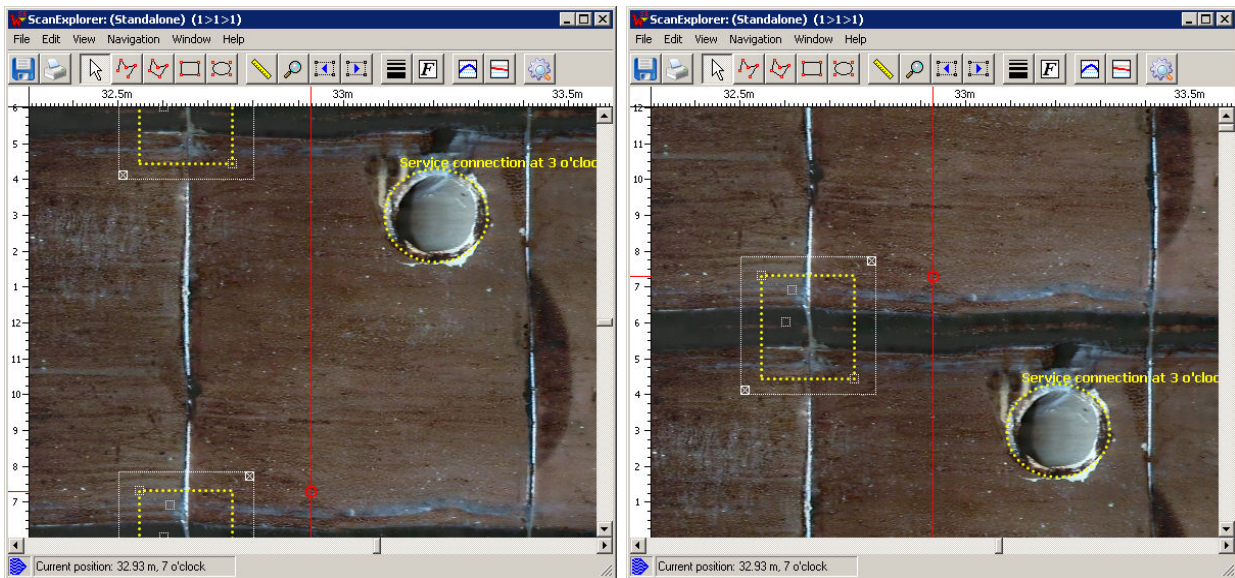



Figure 16: Left: Main window with default vertical scrollbar position. Right: The same sidescan 6 hours down scrolled. Notice the selected graphic across the cut hour of the sidescan.

4.7 Zooming

4.7.1 Zoom Lense Tool

By pressing the zoom lens button you can activate the  zoom tool:



- The zoom lens is red rectangle around the current mouse position and shows the sidescan in its native resolution which means that one pixel in the scanned image is one pixel in the zoom lens.
- You can change the zoom factor in the range of 50-150% with the mouse wheel and pressing the CTRL-key at the same time.
- You can move the current sidescan section with the mouse wheel.
- Pressing the left mouse button activates the measuring tool within the zoom lens.



Figure 17: Zoom lens with measuring in the main window

- A ESC-key press or a click on the pointer tool ends the zooming.

4.8 Inclination & Height Chart

- By pressing the chart icon with the red line  or with the menu command *view > show inclination chart* you can add the inclination chart at the bottom of the main window.
- By pressing the chart icon with the blue line  or with the menu command *view > show height chart* you can add the inclination chart at the bottom of the main window.
- The inclination & the height chart are generated from the inclination values measured during the scan. At the moment only the DigiSewer and Panorama systems captures inclination values.
- To make the blue inclination line less bumpy it is smoothed by averaging neighboring values. The number of values taken for an average is defined in the ScanExplorer.ini file in the field INCL_FILTER_WIDTH. A value of 0 avoids averaging and shows the real values captured from the camera inclination sensor.
- The height chart is calculated from the inclination values. If the start and the end height in the *inspection information dialog* (*File > Inspection information*) is set to zero the height line is not corrected. Because the inclination sensors normally have an error of a certain percentage the summed up error at the end of the chart can be quite high. If you set a non-zero start and end height the height line will be corrected so that it fits into those heights.

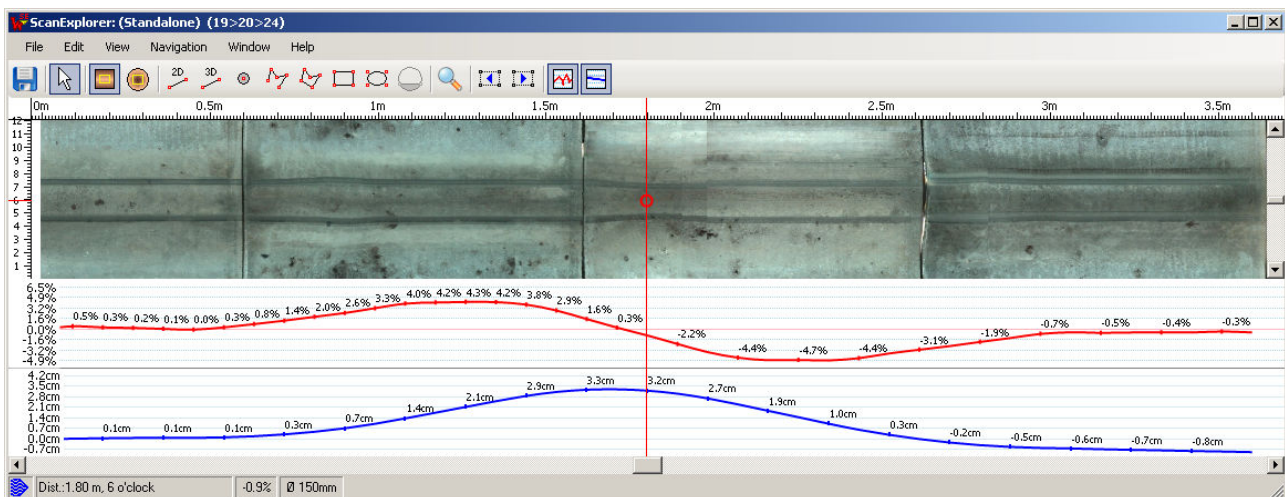


Figure 18: Main window with inclination and height chart of a horizontal (=0% inclination) test pipe. You can see at the end of the height chart a summed up error of ca. 3cm on pipe length of 4m.

5 Creating Graphics & WinCan Observations

5.1 Creating Graphics

5.1.1 Graphics in the Sidescan Drawing Mode

The *Sidescan Drawing Mode* is activated when first button of the following buttons is down:



- In this mode all graphics will be in the plane of the unfolded pipe surface.
- You can choose between the *Measure-2D*, *Measure-3D*, *Point*, *Lines*, *Polygon*, *Rectangle* or the *Ellipse* drawing tool in the toolbar of the main window or in the menu *Edit*.
- By pressing the ESC-key or selecting the pointer tool you can deselect the current drawing tool and abort a new drawing.
- The difference between 2D- and 3D-measuring is that with the 2D-measuring you are measuring a distance on the unfolded 2D pipe surface. With 3D-measuring you can measure in the 3D pipe space. You can distinguish then by the endpoints. 2D-measurements have a squared endpoints where as the 3D-measurements have 2 circles as endpoints.

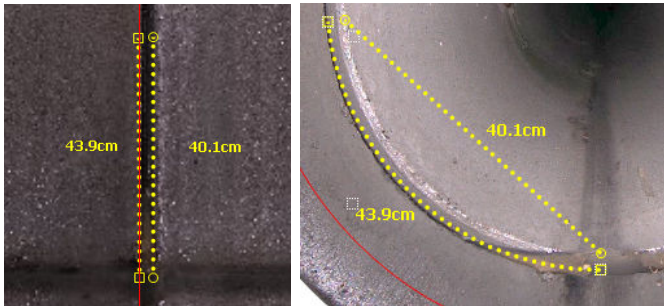


Figure 19: Different distances with 2D- and 3D-measuring. On the sidescan both measurements have the same distance (left). In the frontview you can see that the 2D-measurement is on the pipe surface, where as the 3D-measurement is a straight line in the pipe.

- You can draw in the main window or in the frontview window (DigiSewer & Panorama).
- The drawing starts with the first press of the left mouse button.
- For lines and polygons a new point will be added on each click.
- To finish a line or a polygon you have to double-click or choose *finish graphic* from the context menu that opens on a left mouse button click.

5.1.2 Graphics in the Cross Section Mode

The *Crosssection Drawing Mode* is activated when second button of the following buttons is down:



- In this mode all graphics will be in the cross section plane of the pipe.
- In this mode you don't have the 3D-measuring tool but in addition you have the water level drawing tool.
- This drawing mode makes almost only sense in the frontview because the cross section plane is only a line in the sidescan window.
- The first click will define the cross section plane with a point that is on the pipe surface. The cross section plane will be indicated with a dotted circle.

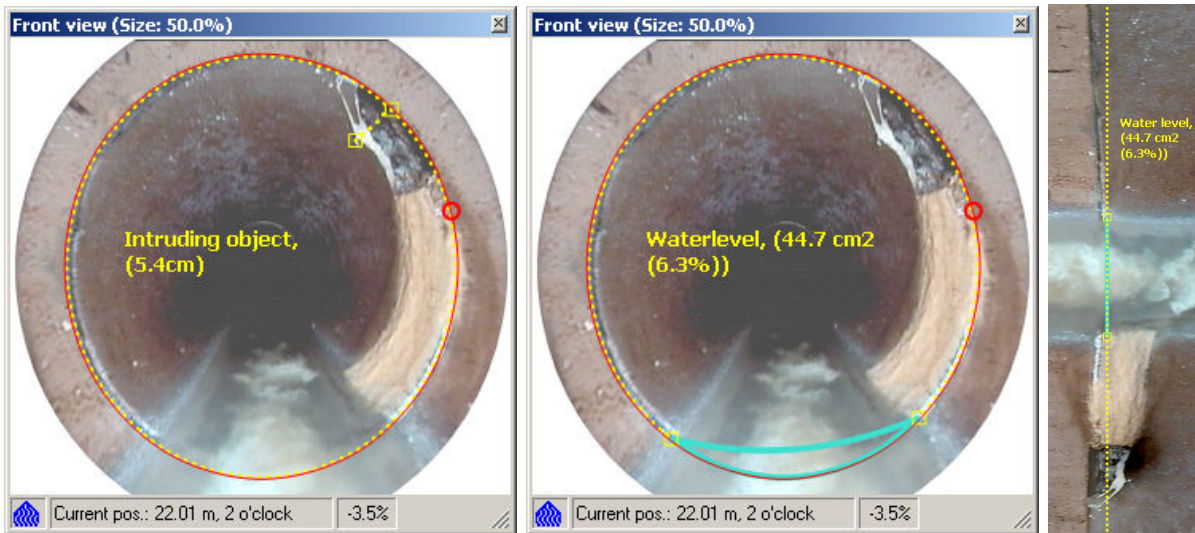


Figure 20: Left: Measuring an intruding object with the 2D-Measuring tool at a joint. In the middle you can see a water level measuring at the same position. The water level is calculated as an area or as a fraction of the entire cross section in percent. To the right you can see the same graphic as single line in the main window.

It is recommended to set the cross section plane not to close from the view point. Because of the fact that the frontview images of DigiSewer and Panoramio systems where taken with a fisheye camera, straight lines on a close cross section appear curved:

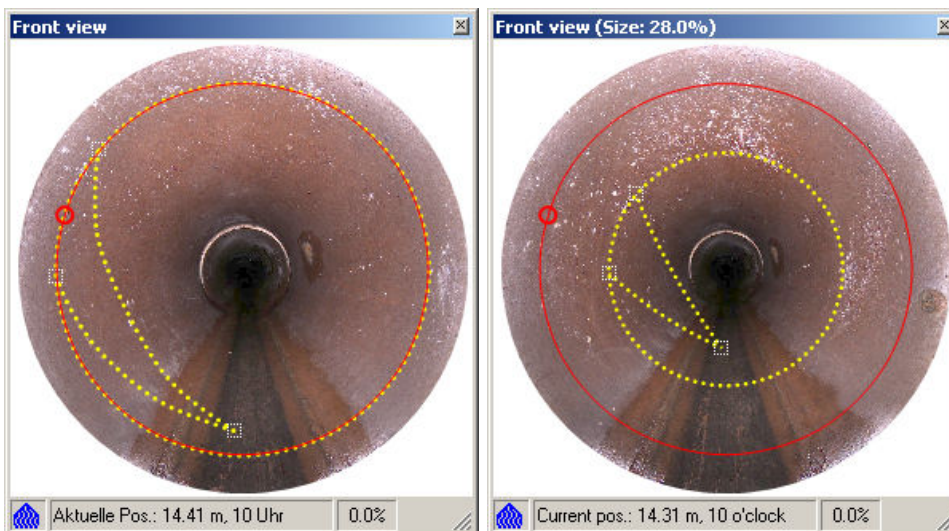


Figure 21: The same graphic in a cross section from very close (left) and from a bit further away (right).

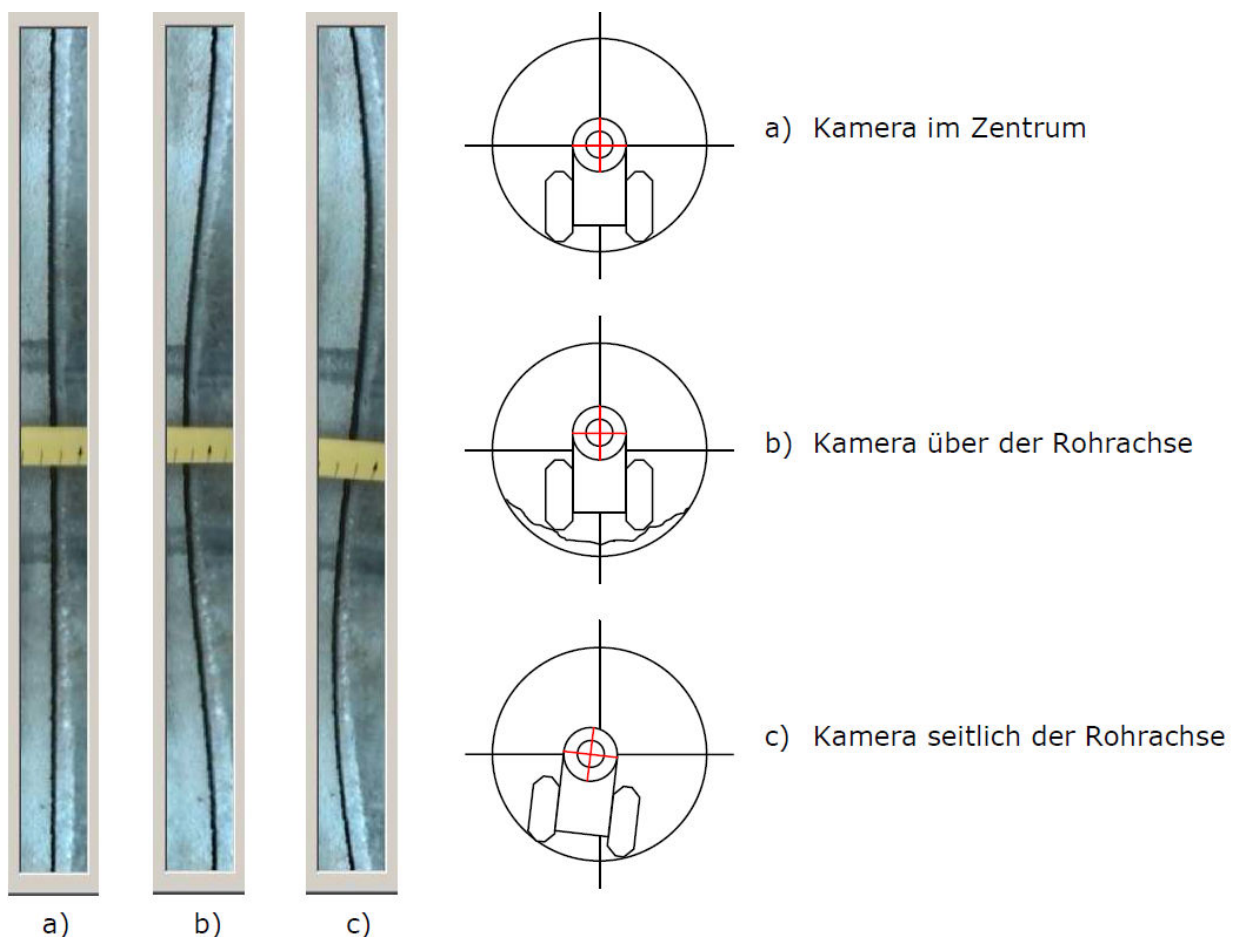
5.1.3 Accuracy of Measurement

The accuracy of measurement of length and area measurements is primarily depending on the pipe diameter. With a good scan quality you can expect an **accuracy of $\pm 3\%$ of the pipe diameter**.

The scan quality is depending on the following factors:

- **Inner pipe diameter setting:** How precise the inner pipe diameter setting corresponds to the real inner pipe diameter strongly influences the scan quality.
- **Camera height setting:** A good correspondence of the camera height setting with the real camera height also strongly influences the scan quality.
- **Pipe sediments:** Strong sediments in the pipe can change the camera height during the scan, which again lowers the scan quality.
- **Axial direction of the camera:** A good parallelism of the camera axis to the pipe axis is also needed for a good scan quality.
- **Distance measurement:** A good correspondence of the distance measurement on the cable drum with the real distance of the camera in the pipe is also important for a good scan quality.

In the following you can see two classic errors (b & c) that will often only be visible at joints:



5.1.4 Graphic Properties

- When the graphic is finished the *Graphic Property* dialog shows up where you can change the graphic properties:

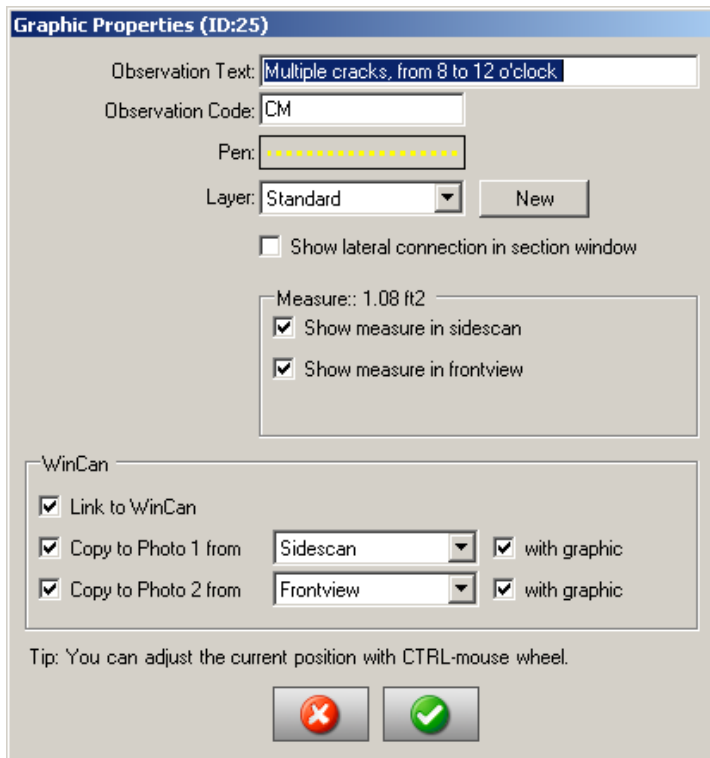


Figure 22: Dialog for the graphic properties

- Add or change an *Observation Text*.
 - Add or change the *Observation Code*. If the graphic will be linked to WinCan a proposed observation code will automatically fill out all fields in WinCan's observation panel. For more information on this please read chapter 5.3 .
 - Change the *graphics* with the Pen Settings dialog.
 - Apply a *layer* to a graphic.
 - Check the checkbox *Lateral Connection* if the graphic stands for a lateral connection. This draws a smaller pipe segment the Sectionview window.
 - Change the visibility with *Show measure in sidescan / frontview* (a length for the measurements and the lines and an area for the rest).
 - Link the graphic to a WinCan observation (see the chapter 5.3):
- The default graphics pen can be set over the menu command *Edit > Change pen*.
 - The default graphics font can be set for all graphics over the menu command *Edit > Change Font*.
 - All the graphics information is stored in the project file (s. chapter 3.2) of the scan.

5.2 Editing Graphics

- A graphic consists out of several points.
- When the graphic is selected all points are marked with a little white square. The square of the corner points have a little cross.
- Beside the points which define the graphic itself and the bounding rectangle points each graphic contains two points that define the bounding rectangle of the text.
- The text is automatically built out of the observation text, code and the measure.
- The bounding white rectangle defines the rectangle of the picture that is printed or copied to WinCan.

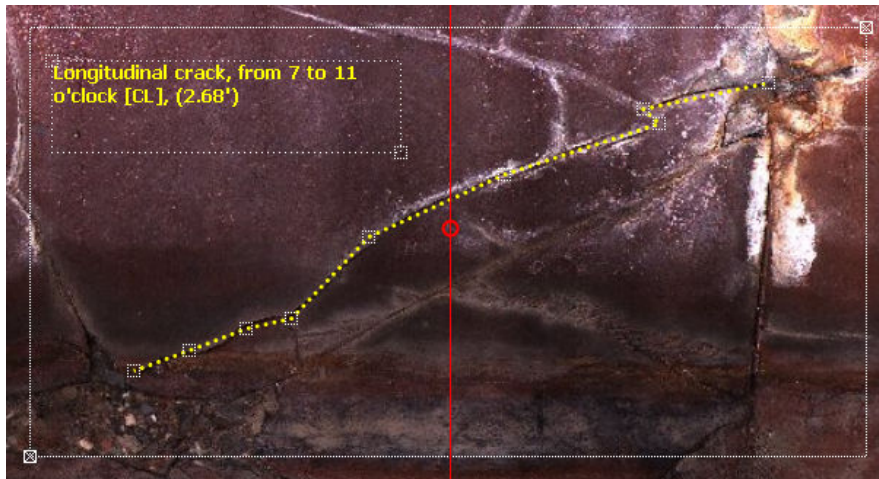





Figure 23: A selected polyline with its bounding rectangle of the text and the overall bounding rectangle.

5.2.1 Selecting a Graphic

- **In the main & frontview window:** With the arrow tool  activated:
 - By clicking into the bounding rectangle of the graphic with the *right* mouse button.
 - By clicking one of the toolbar buttons  . With the buttons you can position and select the next graphic to the left or the right from current position. With this method you can also select graphic that are placed upon each other.
- **In the overview window:** By clicking into graphic with the left mouse button.

5.2.2 Deselecting a Graphic

- **In the main window:** By clicking outside of the bounding rectangle with the *right* mouse button or by pressing the ESC-key.
- **In the overview window:** By clicking outside of a graphic with the left mouse button.

5.2.3 Moving, Editing and Deleteing a Graphic

- You can move a selected graphic with the pressed left mouse button.
- You can move a point of a selected graphic with the pressed left mouse button.
- You can delete a point of a selected graphic with the context menu.
- You can change the selected graphics properties in the property dialog that you can open with the context menu command *Properties* that you get with a right click on the selected graphic or by pressing the ENTER-key.
- You can delete a selected graphic with the context menu command *Delete graphic* on the selected graphic or with a press on the *Delete Key*.
- If you have moved a graphic after having copied images to WinCan you have to recheck the copy checkboxes in the property dialog to resend the images to WinCan again.
- You can delete ALL graphics with the menu command *Edit > Delete multiple graphics*.

5.2.4 Changing the Graphics Pen & Frame

With the menu command *Edit > Change Pen & Frame Size* you can open the Pen & Frame Settings dialog and change the pen and graphic frame properties for all following graphics. If you open this dialog within the graphic properties dialog changes apply only for the selected graphic.

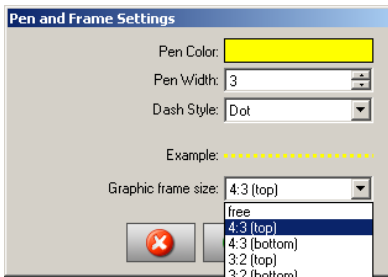


Figure 24: Pen & Frame Size Settings for graphics

Graphic Frame Size

Since Version 2.5 of the ScanExplorer there are two ways to set the graphic frame that is used to create the photos for WinCan:

- With the *free* setting you can freely modify the graphics frame with the corner points of the graphic as shown in Figure 23.
- All other frame size settings in the dropdown list allow you to define a specific frame side ratio such as *4:3*, *3:2* or *5:4*. All ratios can be set with a default text position at the top or at the bottom of the frame.

You can **alter the frame size** with the mouse wheel while pressing the CTRL-key.

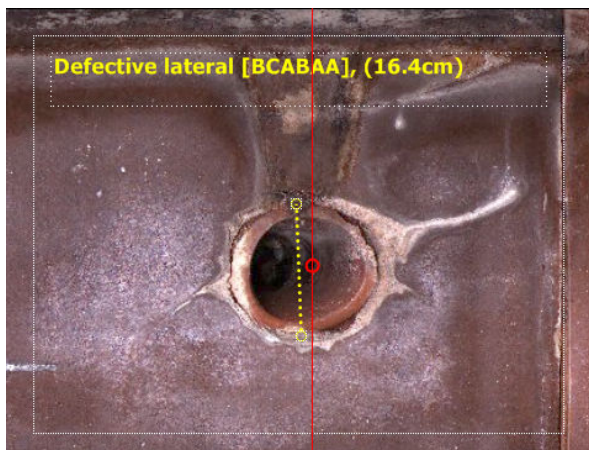


Figure 25: Graphic with fixed frame size ratio 4:3

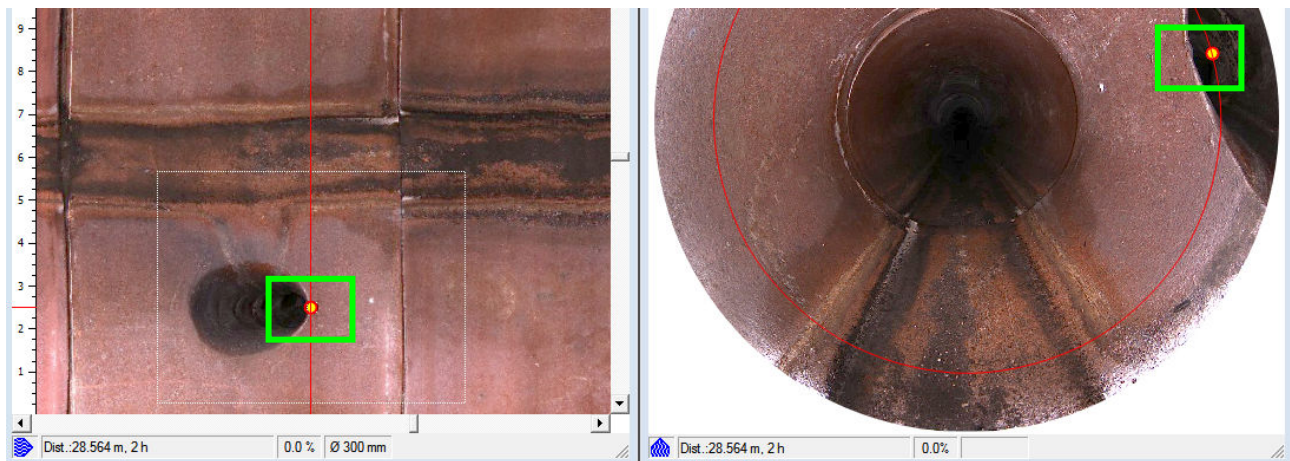
5.2.5 Changing the Font

With the menu command *Edit > Change Font* you can set the type, the style and the size of the font in which the graphic text are drawn:

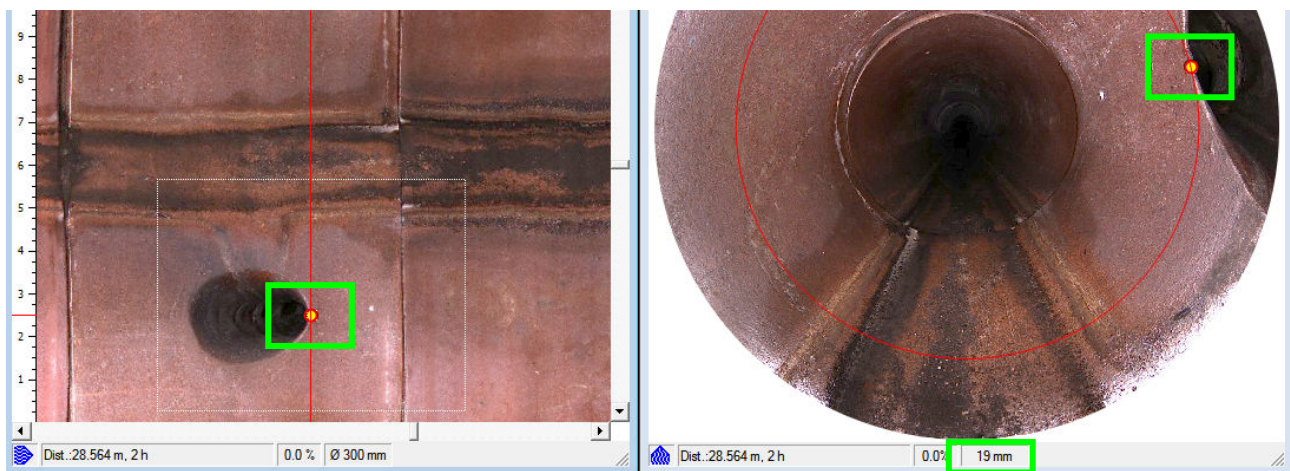
- These settings apply for all graphics.
- The size of the font is the maximum allowed size in dots when the text rectangle is resized and the text fully fits in the rectangle.
- When the text doesn't fit in the rectangle it is automatically scaled down.

5.2.6 Graphic Offset in the Front View

It can happen that a graphic object in the side scan and in the front view is not precisely at the same position. This is mostly due to irregular driving which causes a bumpy cable. Over the entire scan distance these errors should not increase.



With a selected graphic you can correct small displacements with SHIFT-CTRL mouse wheel. The offset distance is shown in the 4th field in the status bar of the front view window:



Because the Rico RPP system doesn't show any graphics in the video front view, the offset distance is applied to the video time. But this only with a selected graphic.

5.3 Creating a Graphic with WinCan Observation

- If you want to create a graphic that is linked to an observation in WinCan8 you have to check the [Link to WinCan](#) checkbox in the graphics property dialog.
- If you additionally check [Copy Photo 1](#) a picture from the selected source is copied into WinCan's [photo 1](#) field. Checking the checkbox [with graphic](#) draws the graphic with the text into the image before copying it to WinCan. The graphic can not be removed anymore from the image.
- If you additionally check [Copy Photo 2](#) a picture from the selected source is copied into WinCan's [photo 2](#) field. Checking the checkbox [with graphic](#) draws the graphic with the text into the image before copying it to WinCan. The graphic can not be removed anymore from the image.
- You always can copy the bounding rectangle of a graphic from the Sidescan in the main window.
- If you want to copy picture from the other windows they must be open.
- **After closing the property dialog in the ScanExplorer** the observation dialog from WinCan is automatically opened. The following information from the ScanExplorer are transferred to WinCan8:
 - The center position of the graphic points is used as the observations position.
 - The minimal and maximal clock position is used as the from and to clock position.
 - The photos are copied into the photo fields.
 - If an observation code was transferred and a corresponding code was found in the catalogue the observation will be filled out automatically.
- **After closing the observation panel in WinCan** the following information are transferred back into the ScanExplorer:
 - The observation text and code
 - An information if the observation is a lateral related observation.
- **Is a graphic linked to an observation in WinCan it will have the following consequences:**
 - If you **select a graphic** in ScanExplorer it automatically activates the row of the associated observation in the observation grid and vice versa.
 - If you **move a graphic** in ScanExplorer it automatically updates the position of the observation in WinCan but NOT vice versa.
 - If you **delete a graphic** in ScanExplorer it asks you if you want to delete the associated observation in WinCan and vice versa.
 - If you **recheck the photo copy checkboxes** the photos are recopied to WinCan.

5.3.1 Displaying additional database information in the graphic's label

If the observation text and code returned by WinCan is not sufficient you have possibility to define any combination of database fields from the database tables section (S_T), inspection (SI_T) and observation (SO_T). This new feature is available with the subscription license 2009.

You have to write the select clause of the SQL statement into the INI\W8Settings.ini file. The following example adds an information text together out of the observation text, code, section name, start node and end node. The definition text has to be defined in the INI variable OBS_INFO in the section [ScanExplorer] and can be any combination of free text in apostrophes and database fieldnames concatenated with a +-sign:

```
[ScanExplorer]
OBS_INFO='Observation: '+SO_TEXT+' ['+SO_OPCODE+'], Section: '+S_SECTIONNAME+',
Start Node: '+S_STARTNODE+', End Node: '+S_ENDNODE'
```

5.4 Creating Observation with automatic Pictures

If you don't want to create graphics in the ScanExplorer you can define in the ScanExplorer Preferences (menu command File > Preferences) from which windows of the ScanExplorer automatically a picture should be generated and transferred to WinCan.

If the ScanExplorer is open while you are creating a new observation in WinCan the automatic pictures will be inserted in the observation's picture 1 and/or 2 when the observation is finished.



Figure 26: The ScanExplorer's Preferences Dialog

5.5 Video Markers for Rico RPP

The ScanExplorer will automatically insert point graphics, when there are video marker entries in the video's index file. A video marker is a non-zero number at the 4th place of an index entry:

```
...  
Val00690="530,72;64,05;0"  
Val00691="535,08;64,11;0"  
Val00690="544,20;64,12;0;1"  
Val00692="577,52;64,16;0"  
Val00693="577,96;64,25;0"  
...
```

In this example there would be placed a point graphic at the distance of 64.12 m. With a jump to that graphic the video would be precisely placed at 544.20 seconds.

6 Printing Reports

In general you have all reports available from WinCan8 that you can configure in the [Docu-Center](#): See the WinCan8 documentation for detailed information about the different reports.

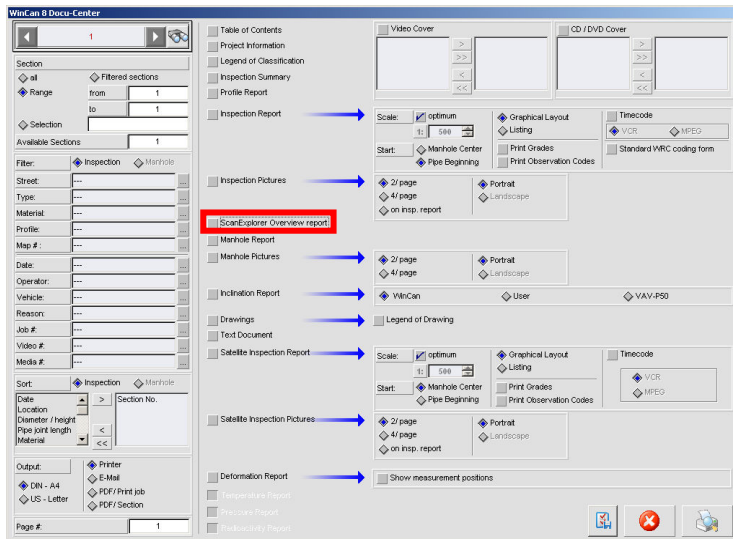


Figure 27: WinCan8 Docu-Center

6.1 ScanExplorer Overview Report in WinCan

There is one special report in the WinCan Docu-Center that is called [ScanExplorer Overview Report](#). It shows the entire scan as in the overview with a distance ruler along the sidescan and an observation legend at the end of the report. The positions of the observations along the sidescan are indicated with red labels:

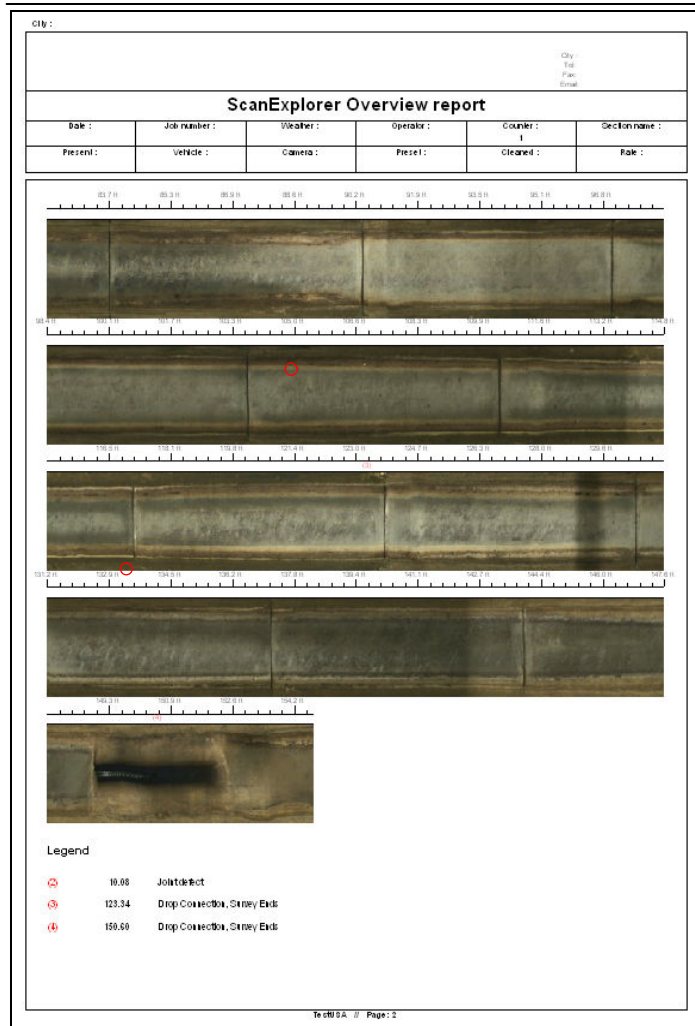


Figure 28: ScanExplorer overview report from the WinCan Docu-Center

6.2 Graphic Report in ScanExplorer

If you want to print a report about the graphics and their corresponding sidescan background you can use the [Graphics Report](#) from the menu [File > Print](#).

- You can filter out the graphics that should be printed:
 - by a distance range
 - by a string with which the graphics label should start

Printing Graphics Report

Filter
 Distance from (feet): -2.78 to: 138
 Label begin with:
 Apply

Format
 Format: ☒ A4 ☐ Letter
 Graphic Scale: Automatic
 Draw graphics: ☒

Preview
 Zoom: Auto
 Columns/Rows: 2 1
 Start Page: 1

Graphics Observation Report

Report Date/Time	Report Date/Time	Section name	Report Name	Operator	Version
02.08.2008 09:31:08	02.08.2008 09:31:08				
02.08.2008 09:31:08	02.08.2008 09:31:08	Length	140.00		

Page 1

Graphics Observation Report

Report Date/Time	Report Date/Time	Section name	Report Name	Operator	Version
02.08.2008 09:31:08	02.08.2008 09:31:08				
02.08.2008 09:31:08	02.08.2008 09:31:08	Length	140.00		

Page 2

Figure 29: Graphics report with all the joints side by side.

7 ScanExplorer Post Processing (DigiSewer)

The *DigiSewer Scanner* software is producing in real-time a raw sidescan. Because the encoder wheel on the cable drum is triggering the moment when the next scan ring is unfolded two neighboring scan stripes do sometimes not perfectly fit together. Because the matching process is computational very expensive it is done in a fast but not very accurate way.

For a perfect match the ScanExplorer start the so called *ScanExplorer Post Process* after opening the scan in the ScanExplorer. The post process is a separate application that runs independently from the ScanExplorer, witch means that you can continue to work in ScanExplorer in the raw version of the scan, while the post process creates a perfectly matched scan in the background.

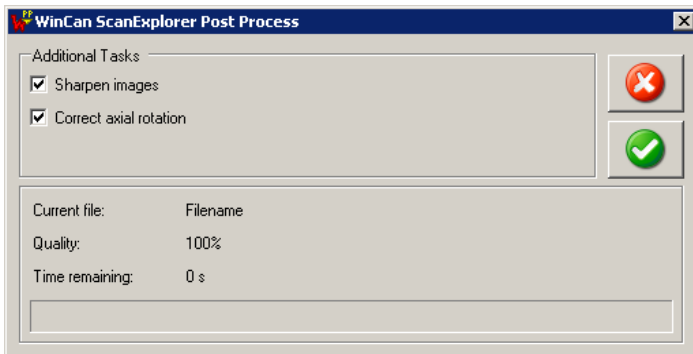


Figure 30: The window of the ScanExplorer Post Process

- Optionally you can choose to sharpen the sidescan additionally.
- A second feature allows you to additionally correct an axial rotation of the crawler camera, that leads to curved waterline.
- When the post process is over, the ScanExplorer automatically reloads the new sidescan.
- When you are closing a post processed scan you will be asked if you want to delete the raw scan files. Click Yes if the post processed scan is better than the original raw scan.

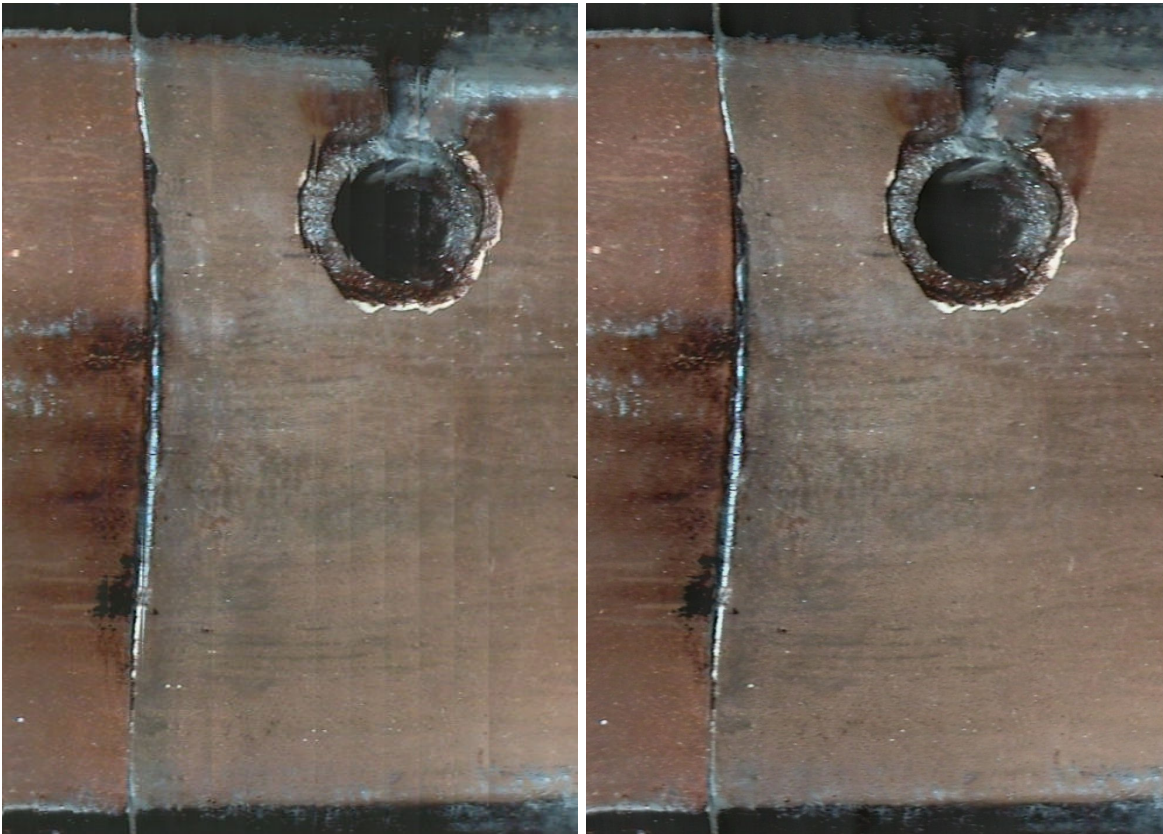


Figure 31: Matching quality before (left) and after the post process (right).

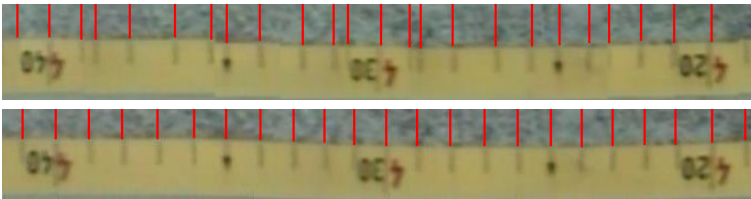


Figure 32: Matching quality detail before (above) and after the post process (below).

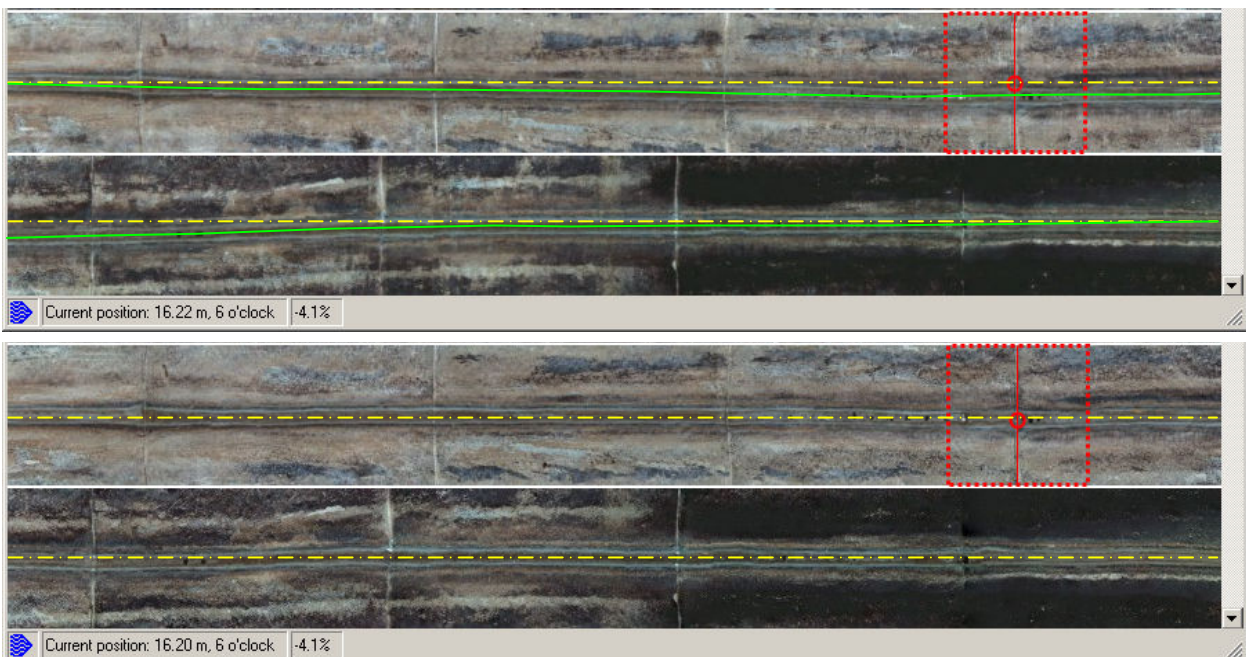


Figure 33: A side-scan overview above before and below after the post process with axial rotation. The yellow line shows the six o'clock bottom line.

If the axial rotation was corrected you will have an additional context menu command *Correct axial rotation* in the frontview that automatically rotates the frontview so that the waterline is again at 6 o'clock:

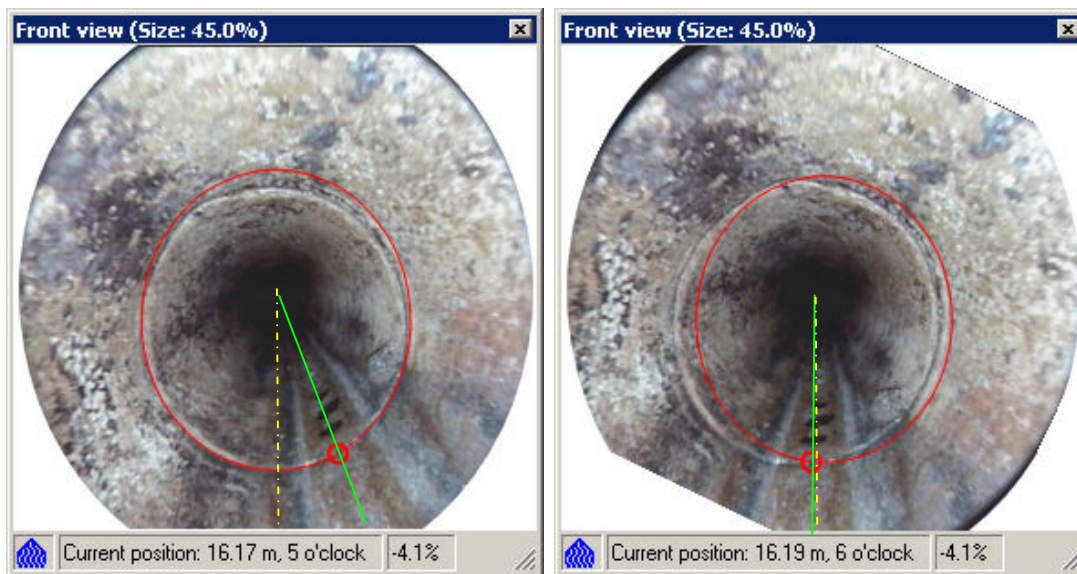


Figure 34: The frontview without (left) and with (right) axial rotation correction at the same position that is shown in the

8 Analysing a Scan

8.1 Starting the WinCan Scan Analyser

- With the menu command *File > Start Scan Analyser* you can start the *WinCan8 Scan Analyser* application:

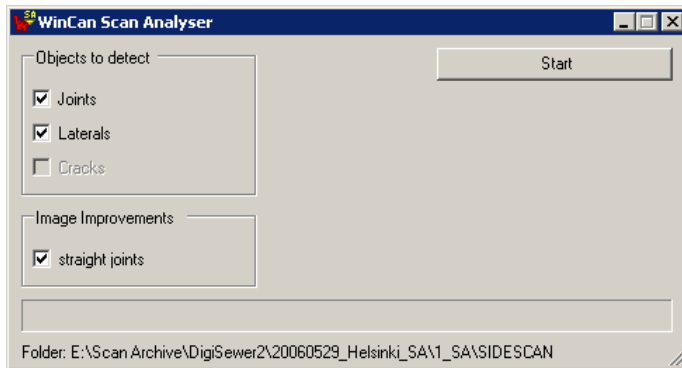


Figure 35: WinCan8 Scan Analyser application window

- At the moment it automatically detects by image processing laterals and joints in the sidescan images.
- After the analysis the Scan Explorer shows a dialog in which you can decide how the detected objects should be visualized as graphic objects. All detected Laterals have a probability associated. The number of found laterals up to a specific probability is written in brackets behind the probability.

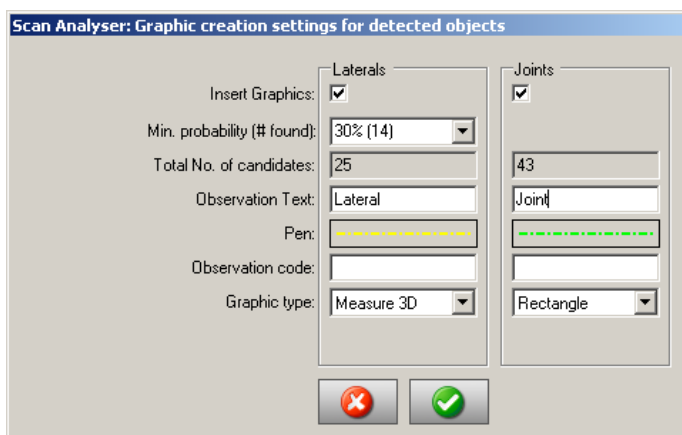


Figure 36: Labeling and pen settings for the detected laterals and joints

- All detected graphics are inserted in their own layer. You can delete them all together with the menu command *Edit > Delete multiple graphics > By layer*.

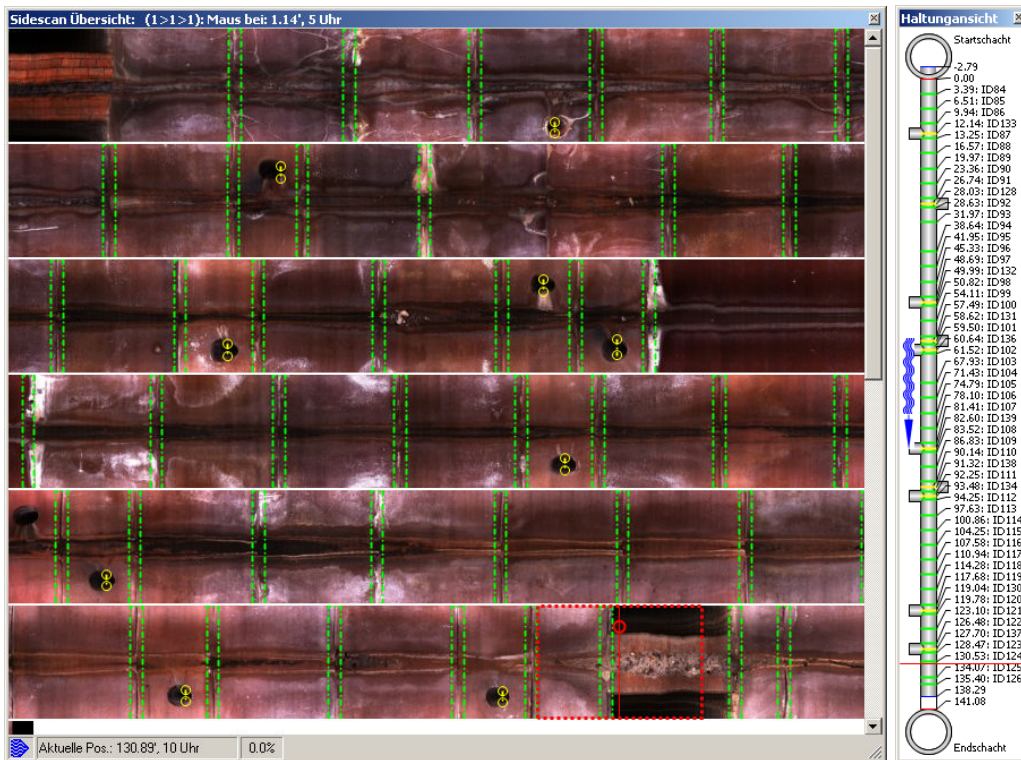


Figure 37: The Scan Explorer with the detected objects.

8.1.1 Scan Analyser: Straighten Joints

If the checkbox *Straighten Joints* is checked the Scan Analyser is able to correct curved joints. Curved joints are generated whenever the scanning camera was not correctly centered during the scan. Because the Scan Analyser is modifying the sidescan images, the scan has to be re-loaded once with the ScanExplorer.

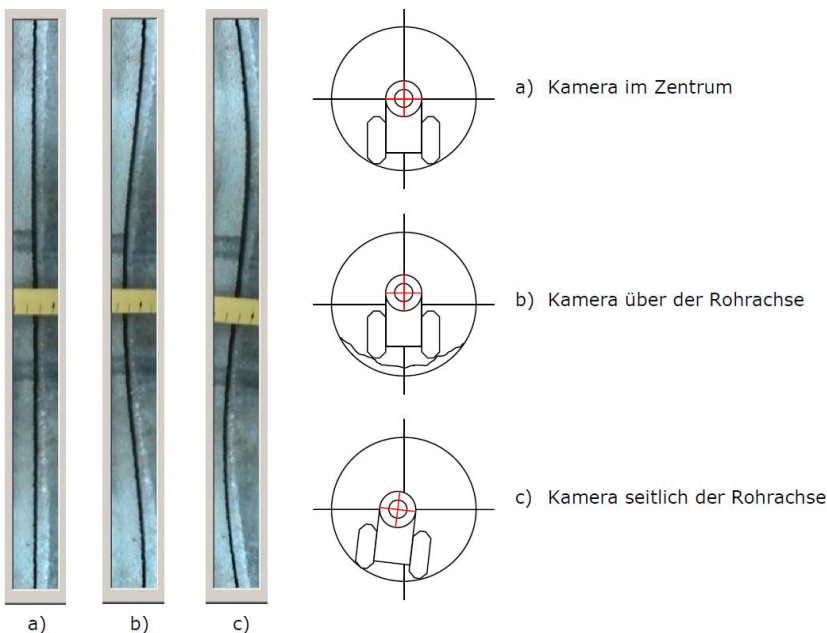


Figure 38: 2 reasons (b & c) for a non-straight joint in a sidescan.

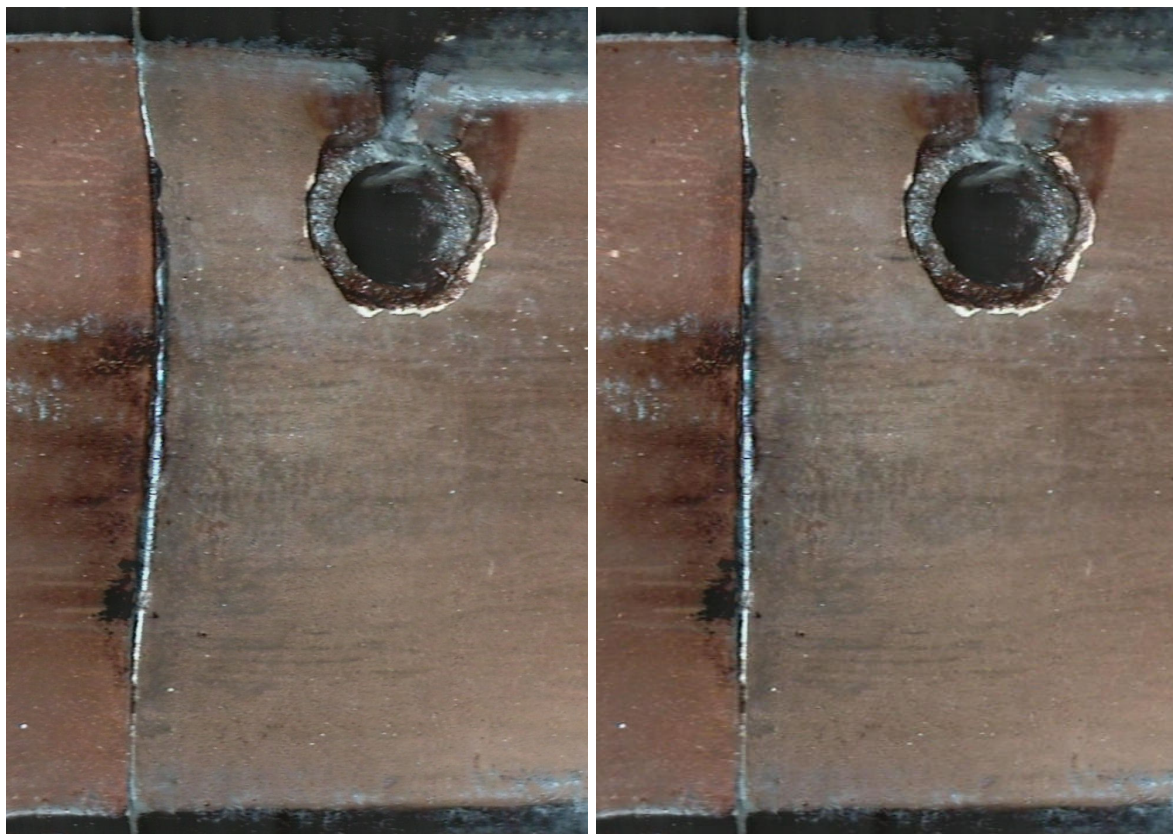


Figure 39: A joint in a sidescan before and after the joint straightening of the Scan Analyser.

9 Menu Commands

9.1 Menu File

9.1.1 Open

This command is only visible in the standalone version of ScanExplorer and lets you open ScanExplorer projects.

9.1.2 Save

With this command you can save a ScanExplorer project. All newly added graphics are stored in the header file of the project. When you close the ScanExplorer window the changes are automatically saved.

9.1.3 Close

This command is only visible in the standalone version of ScanExplorer and lets you close ScanExplorer projects.

9.1.4 Start Scan Analyser

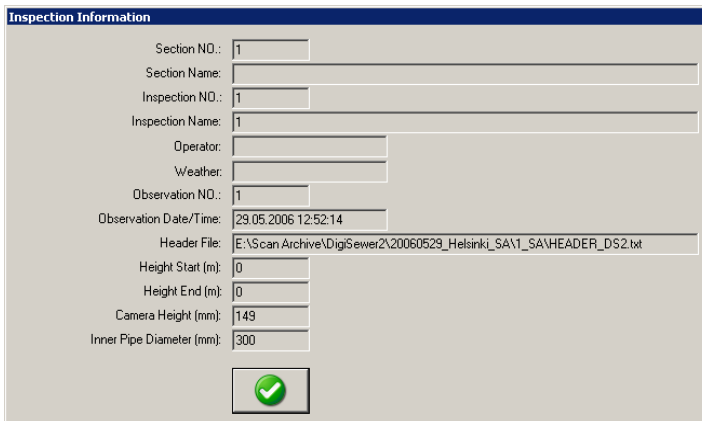
This command starts the WinCan8 ScanAnalyser. See the according chapter for detailed information.

9.1.5 Load Analyser Objects

Allows you to reload the objects that where found in the previous run of the Scan Analyser.

9.1.6 Inspection Information

This command opens the inspection information dialog:




Inspection Information	
Section NO.:	1
Section Name:	
Inspection NO.:	1
Inspection Name:	1
Operator:	
Weather:	
Observation NO.:	1
Observation Date/Time:	29.05.2006 12:52:14
Header File:	E:\Scan Archive\DigiSewer2\20060529_Helsinki_SA\1_SA\HEADER_DS2.txt
Height Start (m):	0
Height End (m):	0
Camera Height (mm):	149
Inner Pipe Diameter (mm):	300
	

Figure 40: Inspection Information dialog

9.1.7 Start Post Process (only DigiSewer)

If the Post Process was not launched after the scan process you can start the Post Process with this menu command. For more information about the post process see the according chapter in the DigiSewer manual.

9.1.8 Delete old Sidescans (only DigiSewer)

If the Post Process ran after the DigiSewer scanner the old sidescan files can be replaced by the new ones. The old sidescans as well as the sample files (for the stripes) remain in the SIDESCAN folder. These files can be deleted with this menu command. For more information about the post process see the according chapter in the DigiSewer manual.

9.1.9 Preferences

Opens a preferences dialog where you can set some global preferences that are not stored in scans.

9.1.10 Print

Opens the graphics report print dialog

9.1.11 Exit

Exits the application.

9.2 Menu Edit

9.2.1 Drawing Modes

Selects the drawing mode.

9.2.2 Drawing Tools

Select a drawing tool. Can be used when the toolbar is hidden.

9.2.3 Delete

Deletes the currently selected graphic without warning.

9.2.4 Delete multiple graphics

With this command you can delete all graphics from the project. **WARNING:** This command can not be undone! The according WinCan8 observations are not deleted but set as a standard WinCan observation.

9.2.5 Change Pen and Framesize

Opens the pen and frame size settings dialog. See chapter 5.2.4

9.2.6 Change Font

Opens the font settings dialog in witch you can set the current font settings. See chapter 5.2.5

9.3 Menu View

9.3.1 Hide all graphics

With this command you can hide all graphics. The graphics are not deleted. They are hidden and a red dashed line is drawn around the sidescan.

9.3.2 Show inclination chart

Shows the inclination chart at the bottom of the main window.

9.3.3 Show height chart

Shows the height chart at the bottom of the main window.

9.3.4 Unit > Meter/Feet

With the sub-command *Meter* all distance measurements are displayed with metric units. With the sub-command *Feet* all distance measurements are displayed feet and inch.

9.3.5 Zoom

Turns on the zoom tool.

9.3.6 Sidescan View Direction

Changes the view direction of the sidescan in the main window.

9.3.7 Reset Distance Scale Shift

Resets the distance scale shift to its initial position.

9.3.8 Reset Clock Scale Shift

Resets the clock scale shift to its initial position.

9.3.9 Reset Clock Shift (Scrollbar)

Resets the clock scrollbar shift to its initial position.

9.3.10 Invert Distance

Inverts the distance scale such that it counts backwards. A blue distance scale shows that the distance scale is inverted.

9.3.11 Show Colormap for Radius Scans

Inverts the distance scale such that it counts backwards. A blue distance scale shows that the distance scale is inverted.

9.4 Menu Navigation

9.4.1 Go to the next graphic

Jumps to the next graphic and selects it.

9.4.2 Go to the previous graphic

Jumps to the previous graphic and selects it.

9.4.3 Go to the scan start

Jumps to the scan start.

9.4.4 Go to the scan end

Jumps to the scan end.

9.4.5 Mouse wheel direction

This menu lets you change the way of how the current position is changed when you pull the mouse wheel.

9.5 Menu Window

9.5.1 Overview Window

With this command you can show the overview window if it was closed before.

9.5.2 Frontview Window

With this command you can show the frontview window if it was closed before.

9.5.3 Sectionview Window

With this command you can show the sectionview window if it was closed before.

9.5.4 3D-Window

With this command you can open the 3D window. In RPP only this or the Frontview window with the video can be open at the same time.

9.5.5 Panoramo Viewer Window (Panoramo)

With this command you can open and close the Panoramo Viewer window.

9.5.6 Applying a window layout

With this command you can apply a stored layout. You can select a layout from a list that is stored in the WinCanScanExplorer.ini file.

9.5.7 Save the current window layout

With this command you can save the current window positions in the active layout. Changes on windows without using this command afterwards are not stored.

9.5.8 Save as new window layout

With this command you can save the current window positions as a new window layout.

9.5.9 Delete window layout

With this command you can delete a layout from the window layout list. You can not delete the layout with the name "1024x768".

9.5.10 Bring windows to front together

If this menu item is checked the scan explorer windows are brought to front together if they are e.g. in the background of WinCan.

9.5.11 Move all windows with main window

If this menu item is checked all windows are moved together with the main window.

9.5.12 Do magnetic resize & move

If this menu is checked the ScanExplorer windows will be magnetically attracted to each other.

9.5.13 Show Toolbar

Shows or hides the toolbar in the main window.

9.5.14 Change Language

With this command you change the language of the ScanExplorer user interface.

9.6 Menu Help

9.6.1 About ScanExplorer

With this command you can open the About dialog with copyright and version info.

9.6.2 Version

Opens the version history file of the ScanExplorer that shows from version to version what has changed in the application.

9.6.3 Show the Quick Help Window

Shows the quick help dialog about the keyboard shortcuts and the mouse interaction.

9.6.4 Open ScanExplorer Documentation (PDF)

With this command you can open this PDF documentation if you have a PDF-reader installed.

9.7 Menu Panorama

This menu is only available when then the Panorama Viewer window is open:

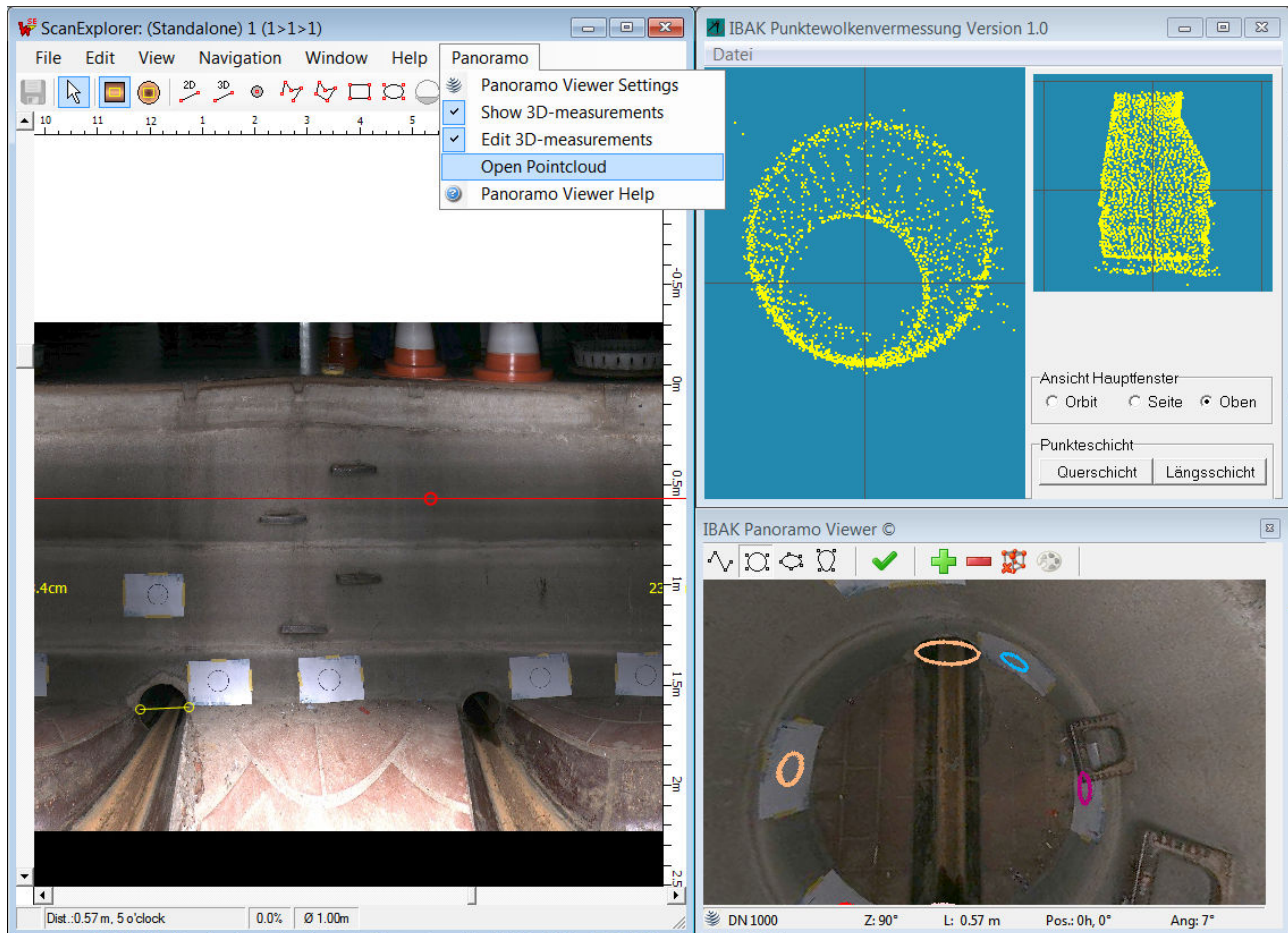


Figure 41: The additional windows from the PanoramaViewer: On top-right the pointcloud viewer and the measure toolbar in the PanoramaViewer.

9.7.1 Panorama Viewer Settings

This menu command shows the Panorama settings dialog. Please refer to the original viewer documentation from IBK.

9.7.2 Show 3D-Measurements

This option is only available if the scan (e.g. a Panorama SI scan) contains point cloud information). Please refer to the PanoramaViewer documentation for more help about the measure features.

9.7.3 Edit 3D-Measurements

This option is only available if the scan (e.g. a Panorama SI scan) contains point cloud information). This option allows you to measure in 3D in the PanoramaViewer. Please refer to the PanoramaViewer documentation for more help about the measure features. The measures done in the PanoramaViewer are not taken over into WinCan.

9.7.4 Open Pointcloud

Starts the Panorama Pointcloud application.

9.7.5 Panorama Viewer Help

Show the Panorama Help file.

10 Appendix

10.1 INI-File Parameters

The INI-file with the name *WinCanScanExplorer.ini* stores some settings of the ScanExplorer.

The original INI-file is placed in the INI-directory within the WinCan8 application directory:

e.g.: *c:\Program files\WinCan v8\WinCan\INI*

At the first start-up and after every update this INI-file is copied to the user directory:

e.g.: *c:\Documents and Settings\{USERNAME}\Application Data\CDLAB\WinCan8\INI*

The colors in the list below have the following meaning:

- **Parameter set by WinCan:** The red parameters are set by WinCan if you start the scanner from within WinCan. If you start the scanner standalone you can set these parameters yourself.
- **Parameters manually set:** The black parameters have to be manually set in the INI-file. Most parameters have to rarely set or should not be changed at all.
- **Parameters set by DigiSewer:** The green parameters are set by the DigiSewer scanner application and should not be changed manually.
- **Parameters set by ScanExplorer:** The blue parameters are set by the ScanExplorer and should not be changed manually.

```
[GENERAL]
VERSION=1.50.2510.16496      # ScanExplorer Version used to check if INI-file is depricated
WINDOW_LEFT=206             # Last windows left position (set by DS)
WINDOW_RIGHT=1074           # Last windows right position (set by DS)
WINDOW_TOP=122              # Last windows top position (set by DS)
WINDOW_BOTTOM=902           # Last windows bottom position (set by DS)

[HEADER]
SCANAPPLICATION=DS2         # Type of scan app. (set by WC)
LANGUAGE=USA                # Application Language (set by WC)
DEFAULT_DATA_PATH=D:\WC8Projects\DS1\DigiSewer #Path where the scan will be stored (set by WC)

SECTION_NO=1                # section auto number (set by WC)
SECTION_NAME=               # section name (is displayed window titlebar if set)
SECTION_LENGTH=0            # total length of section in m
SECTION_STARTNODE=          # name of start manhole
SECTION_ENDNODE=            # name of end manhole
SECTION_FLOW=1              # flow direction: 1=start>end, 2=end>start
INSPECTION_NO=1             # inspection auto number (set by WC)
INSPECTION_NAME=1           # inspection name (set by WC)
INSPECTION_WEATHER=Sunshine # weather condition (set by WC)
INSPECTION_OPERATOR=M. Hudritsch # operator name (set by WC)
INSPECTION_CLEANING=cleaned # cleaning condition (set by WC)
INSPECTION_DIRECTION=D      # D=downstreams, U=upstreams
INSPECTION_CATALOGUE=obs pacp.mdb # observation catalogue used for reporting
CONTRACTOR_NAME=Marcus      # contractor name (set by WC) (set by WC)
CONTRACTOR_STREET=Clean 13  # contractor street (set by WC) (set by WC)
CONTRACTOR_CITY=Clean City  # contractor city (set by WC) (set by WC)
CONTRACTOR_TEL=013 313 13 13 # contractor telephone NO. (set by WC)
CONTRACTOR_FAX=013 313 13 12 # contractor fax NO. (set by WC)
CONTRACTOR_EMAIL=m@cleaner.ch # contractor email adress (set by WC)
OBSERVATION_NO=1            # observation auto number (set by WC)

UNIT=M                      # unit (M=meter, I=inch)
THUMBNAIL_HEIGHT=100        # height if side scan thumbnails in pixels
GRayscale_HEIGHT=500        # height if side scan grayscale images in pixels
JPEGQUALITY_SS=90           # JPEG quality for side scans (99 is best, 1 is worst)
JPEGQUALITY_FV=90           # JPEG quality for front views (99 is best, 1 is worst)
INCL_FILTER_WIDTH=3         # Inclination averaging width (0=no averaging)
BLACKANDWHITE=0             # 0=show side scan preview in color, 1=show it in b/w
DOUNFOLDLOG=0               # 0=no log file, 1=log file is written (for development)
SAVESAMPLES=0               # 0=no stripes saved, 1=stripes are saved
SAMPLEBILINEAR=1           # (don't change)

OBSERVATION_DATE=03/21/06   # observation date (MM/DD/YY) (set by DS)
OBSERVATION_TIME=08:43:59   # observation time (HH:MI:SS) (set by DS)
DISTANCE_START=5            # distance start in mm (set by DS)
DISTANCE_END=3825           # distance end in mm (set by DS)
```

Appendix: INI-File Parameters

```
DEPTH_START=0.000000          # depth start in m (set by DS)
DEPTH_END=0.000000            # depth end in m (set by DS)

[ENCODER]
WHEELDIAMETER=63.662000        # encoder wheel diameter in mm (must be very precise)
IMPPERREV=-20                  # NO. of impulses per revolution of the encoder
INCLINATION_OFFSET=-250        # Distance in mm from current pos to incl. sensor
IMPPERUNFOLD=4                 # NO. of impulses per unfold (set by DS)
DISTPERFVMMTARGET=100         # Desired targed distance between frontviews (set by DS)
DISTPERFVMM=90                # Real dist. between FV depends on the dist. per unfold
UNFOLDPERFV=5                  # NO. of unfolds per frontview image (set by DS)
USB_INCL_ISAVAILABLE=1        # 0=no inclination, 1=inclination is stored (set by DS)
USB_INCL_CHANNEL=2             # USB channel for inclination (set by DS)
USB_INCL_MAX=51669.000000      # USB inclination max. value (set by DS)
USB_INCL_MIN=10813.000000      # USB inclination min. value (set by DS)

[RINGCONFIG]
SAMPLEHEIGHT=1000              # Height of side scan image in pixels(max. 1500)
SAMPLEWIDTHMIN=60              # Min. width of unfold stripe
SIDESCANW=2000                 # Target width of one big side scan image
UNFOLDDIR=-1                   # undold direction (1 clockwise, -1 counter-clockwise)
SEARCHSTEPS=0                  # if 0 no stripe matching is done (faster) else set it to 3
TOPWIDTH=20                    # (don't change)
CAMERATWIST=0.000000           # (don't change)
FV_INTERVAL=100                # front view interval distance in mm
DIAMETER=150.000000            # Inner pipe diameter in mm (set by DS)
CAMERAHEIGHT=84.000000         # camera height above pipe ground in mm (set by DS)
CENTERX=346.500000             # Center x-coordinate from lower left corner (set by DS)
CENTERY=296.500000            # Center y-coordinate from lower left corner (set by DS)
VIEWRADIUSX=254.500000         # View radius in x-direction (set by DS)
FACTORRY=1.086444              # Factor for the y-view radius (set by DS)
STARTANGLE=270                 # start angle in degress (set by DS)
STARTHOUR=6                    # start angle in clock hour (set by DS)
STARTSCANANGLE=51.000000       # (set by DS)
STOREDSETTINGS_01=150mm Concrete Pipe;150;84;12;51.000000 # Stored ring config (set by DS)
STOREDSETTINGS_02=200mm Concrete Pipe;190;100;12;53.500000 # Stored ring config (set by DS)
STOREDSETTINGS_03=300mm Concrete Pipe;350;194;6;52.000000 # Stored ring config (set by DS)
STOREDSETTINGS_04=500mm Clay Pipe;500;273;6;53.000000     # Stored ring config (set by DS)

[CAMERA]
CAMERANAME=IPEK: FUjion180 NOV05 #Name of camera & lense (don't change)
WIDTH=720                       # front view width in pixels (don't change)
HEIGHT=576                      # front view height in pixels (don't change)
POLY_X3=0.6147                  # Camera calibration parameter (don't change)
POLY_X2=1.5845                  # Camera calibration parameter (don't change)
POLY_X=257.16                   # Camera calibration parameter (don't change)
POLY_C=0.4275                   # Camera calibration parameter (don't change)

[VIEWER]                        # WinCan ScanExplorer & ScanAnalyser Settings (don't change)
GRAPHIC_WIDTH=3
GRAPHIC_COLOR=-256
GRAPHIC_STYLE=DashDot
GRAPHIC_FONT=Tahoma;10;Bold
INCL_SHOW=False
DEPTH_SHOW=False
DEFAULT_SECT_NAME=Section
DEFAULT_INSP_NAME=Inspection
NEXT_SECT_NO=12
NEXT_INSP_NO=3
MANHOLEDIAMETERPX=40
PRINT_SETTINGS=;;;A4;3;True;25;15;10;10
JOINT_SETTINGS=90;20;2;10;Joint
MAGNETIC_WIDTH=20
WMP_UMODE=full
WINDOW_LAYOUT_LAST=1024x768
WINDOW_LAYOUT=1024x768;120;0;607;741;False;120;336;902;405;True;False;727;0;295;336;True;False;0;0;1
20;741;True;False;True;True;True
```

10.2 Document History

25-APR-06: Initial version
08-JUN-06: File > Post Process menu commands added.
29-JUN-06: Adapted to version 1.300. New screenshots.
04-JUL-06: WinCan Inclination module info added.
25-JUL-06: Adapted to application version 1.31
Added chapter about media distribution
27-JUL-06: Adapted to application version 1.35
17-AUG-06: Adapted to application version 1.40
30-AUG-06: Adapted to application version 1.41
11-OCT-06: More precise installation chapter.
08-NOV-06: Adaptation to application version 1.5
15-NOV-06: Adaptation to application version 1.51
21-DEC-06: Adaptation to application version 1.6
14-FEB-08: Adaptation to application version 1.7
27-FEB-08: Adaptation to application version 1.71
09-MAR-08: Adaptation to application version 1.72
20-APR-08: Adaptation to application version 1.74
30-APR-08: Adaptation to application version 2.0
04-JUN-08: Adaptation to application version 2.01
31-JUL-08: Adaptation to application version 2.02
13-JAN-09: Adaptation to application version 2.5
05-APR-11: Adaptation to application version 2.6
24-AUG-11: Adaptation to application version 2.7
08-NOV-11: Adaptation to application version 2.7.0.3