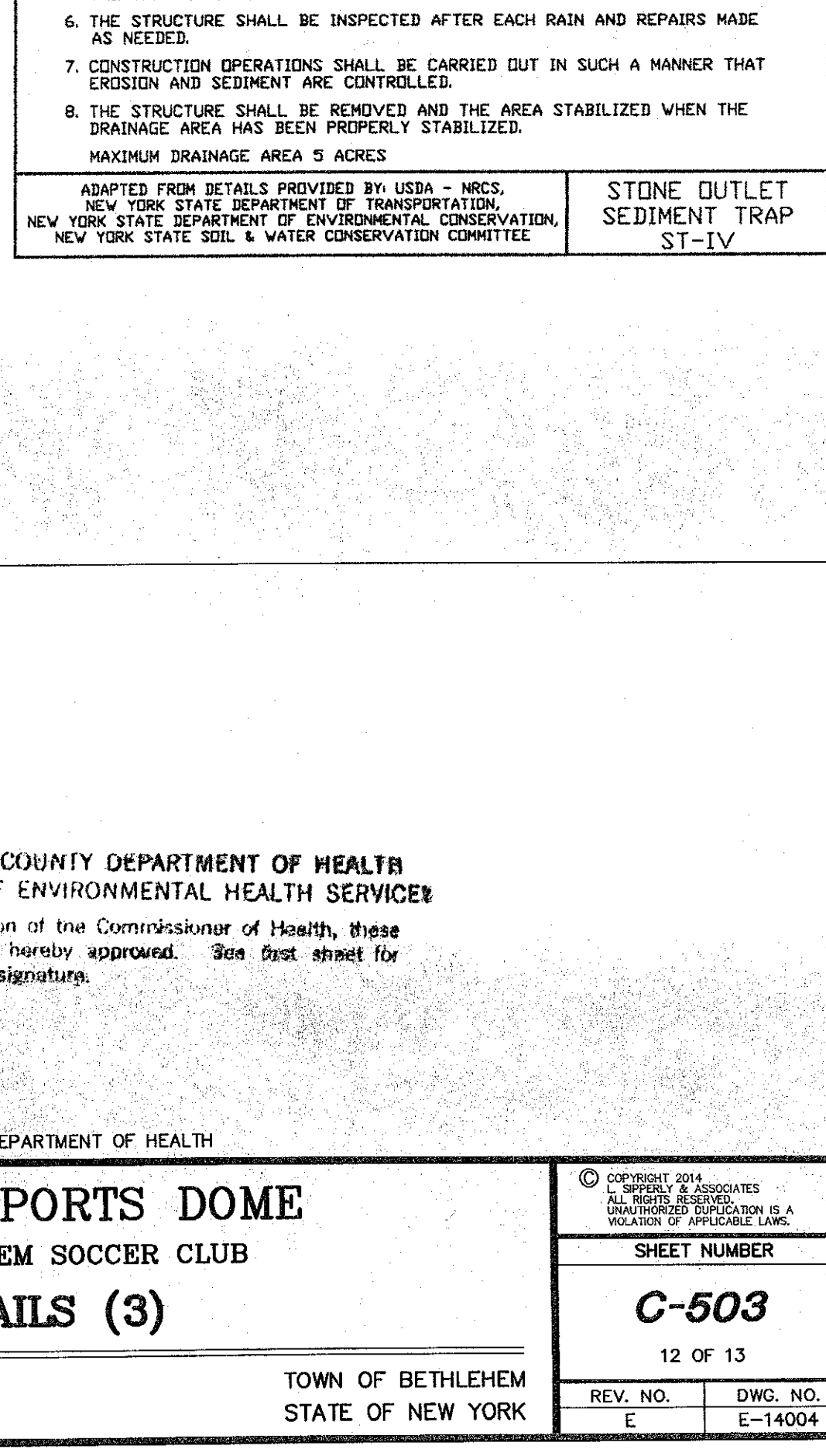
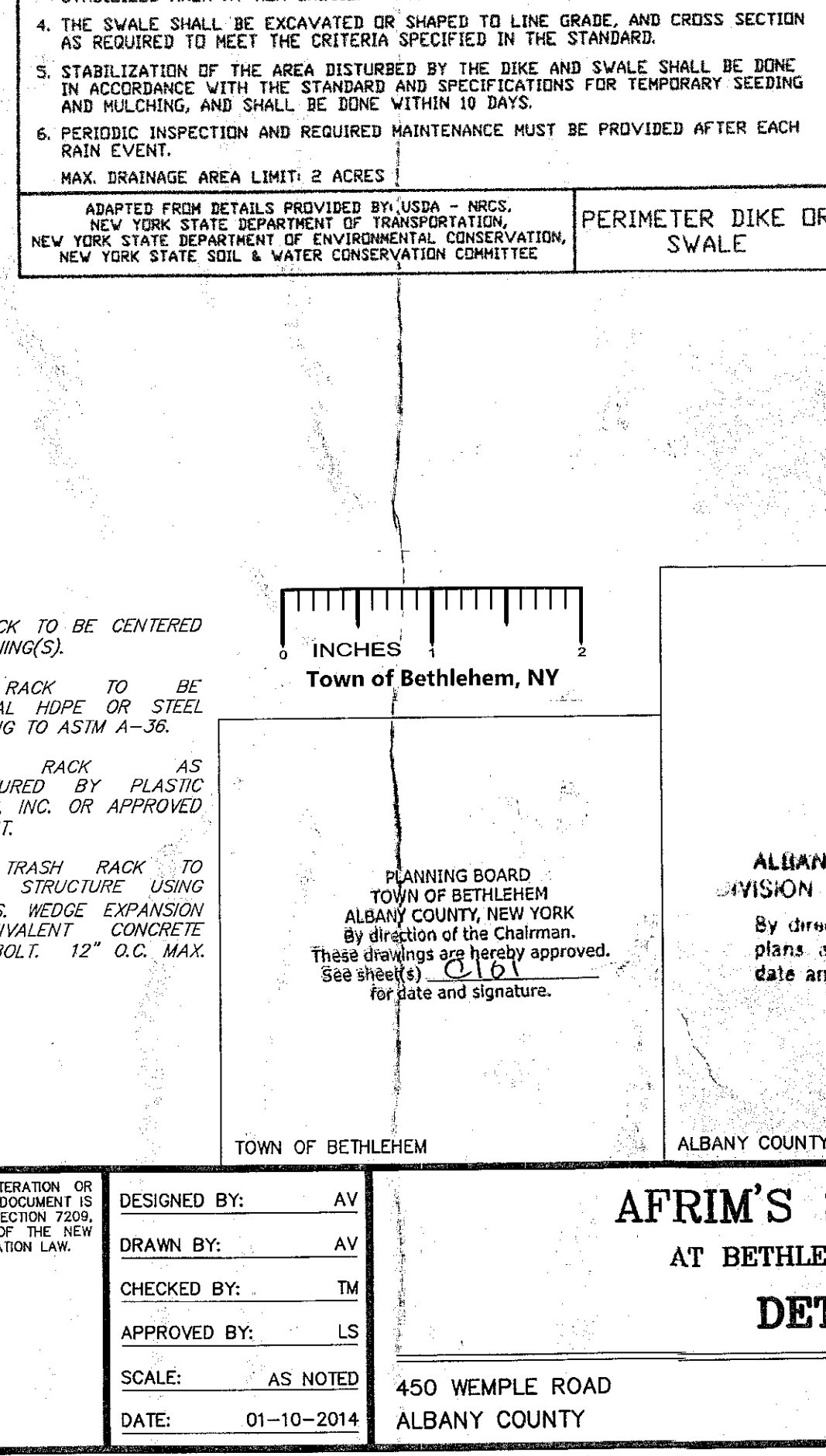
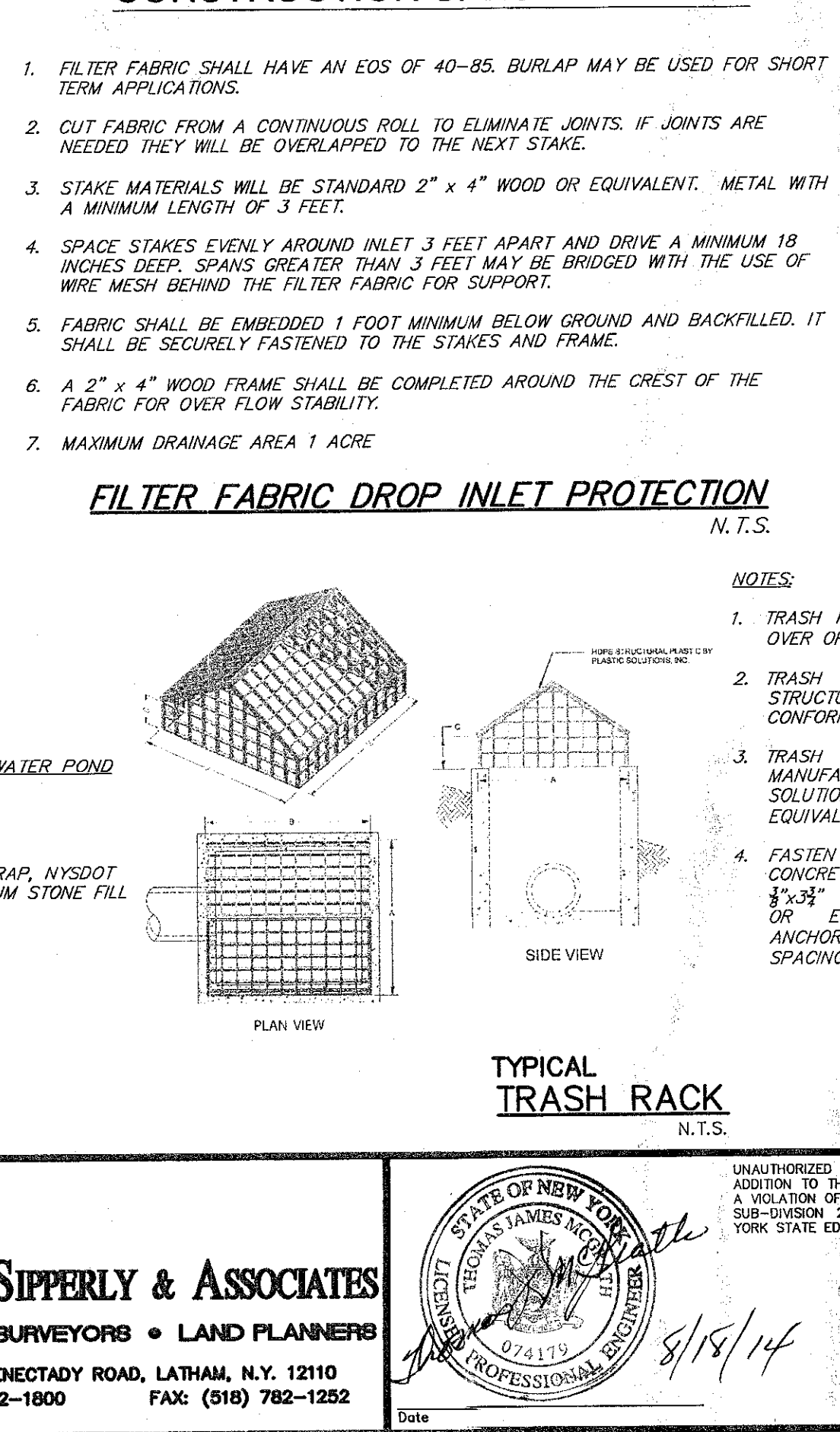
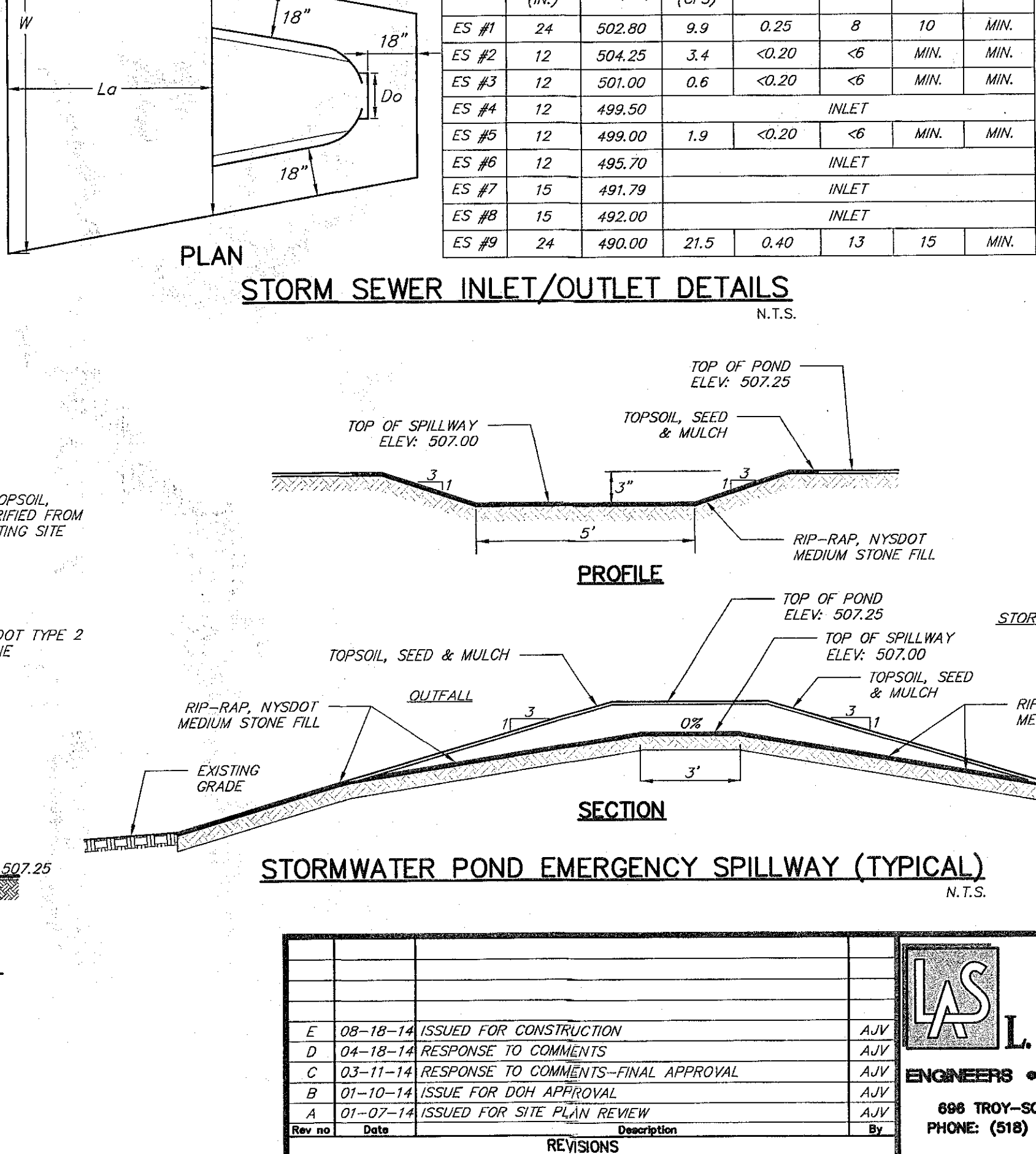
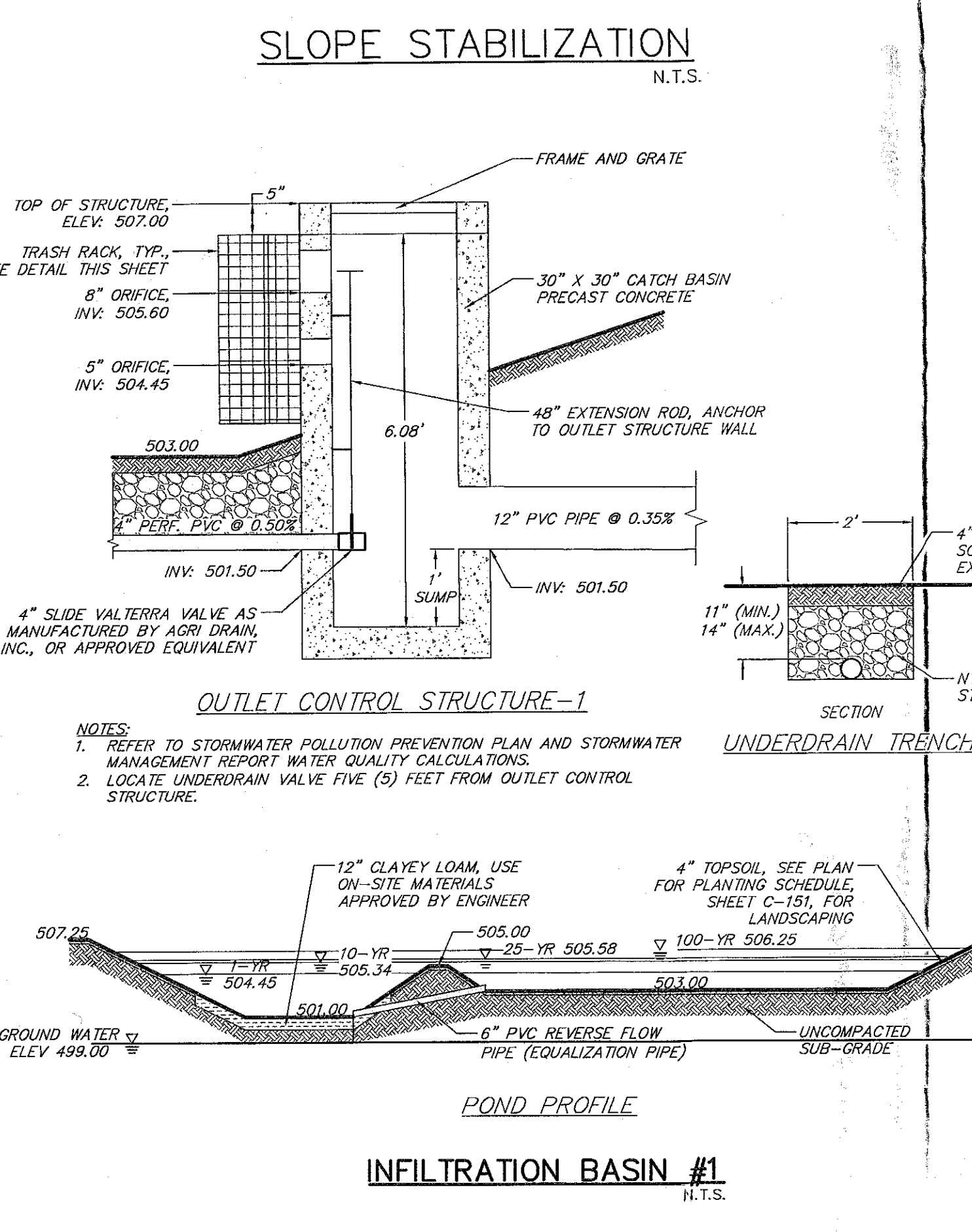
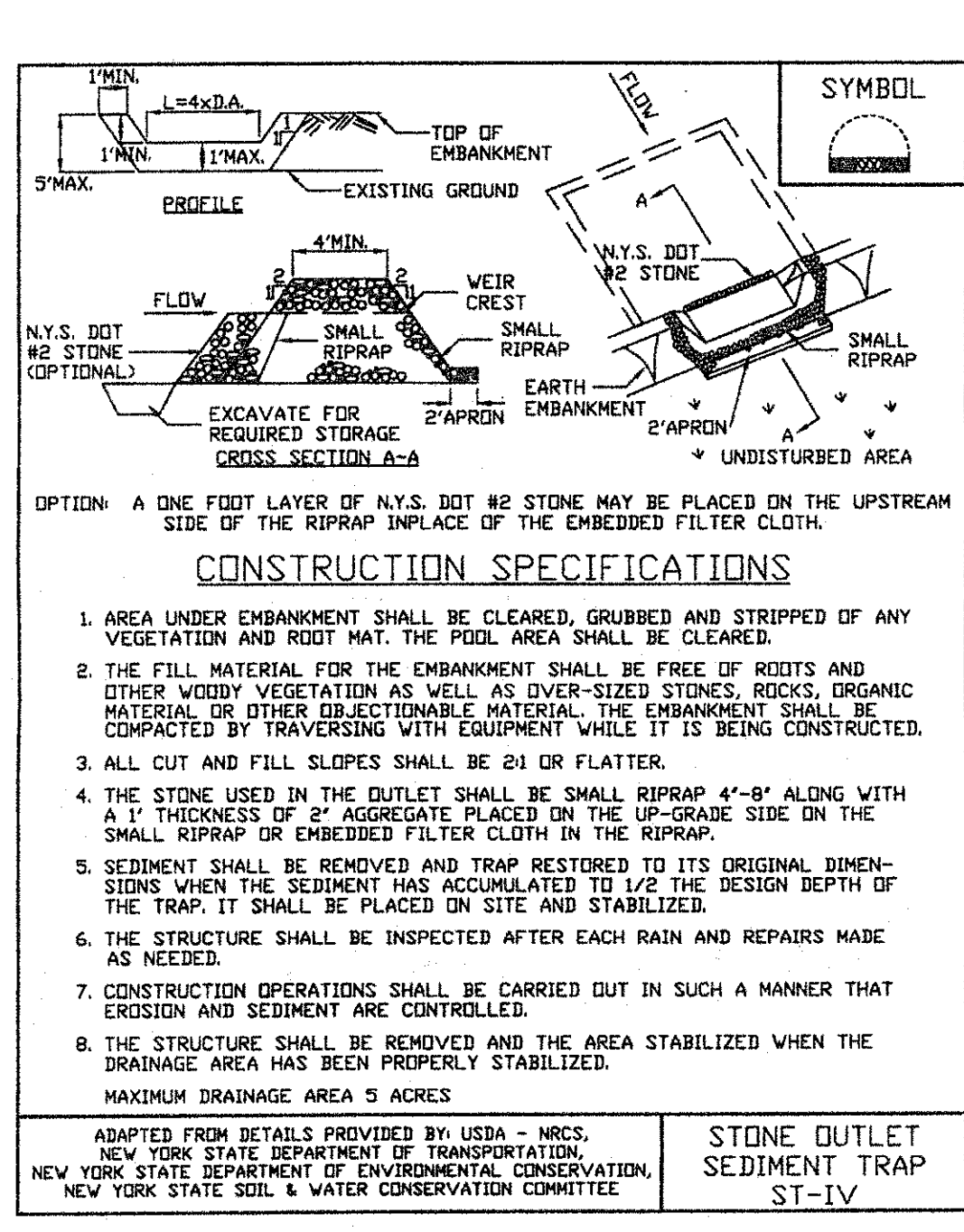
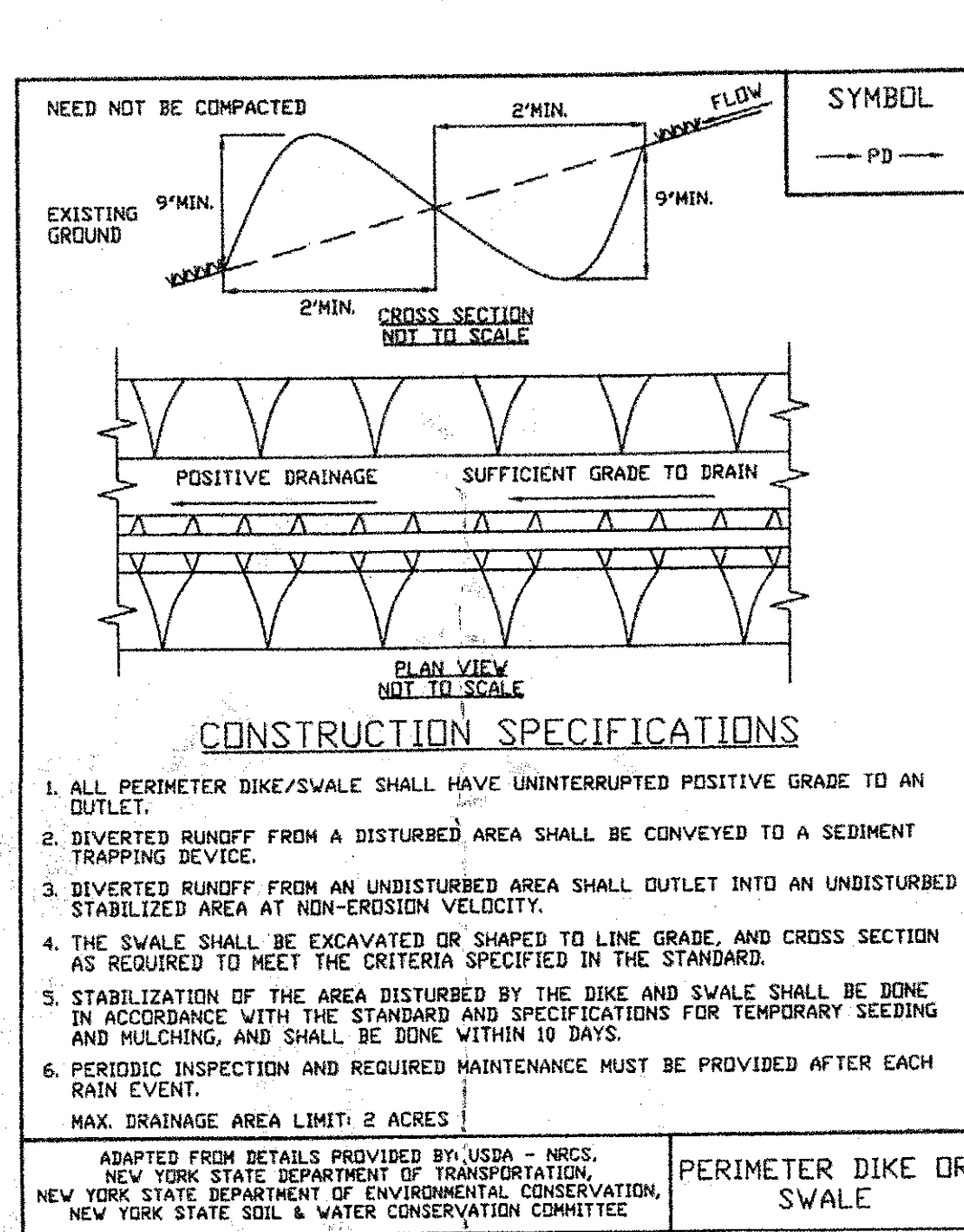
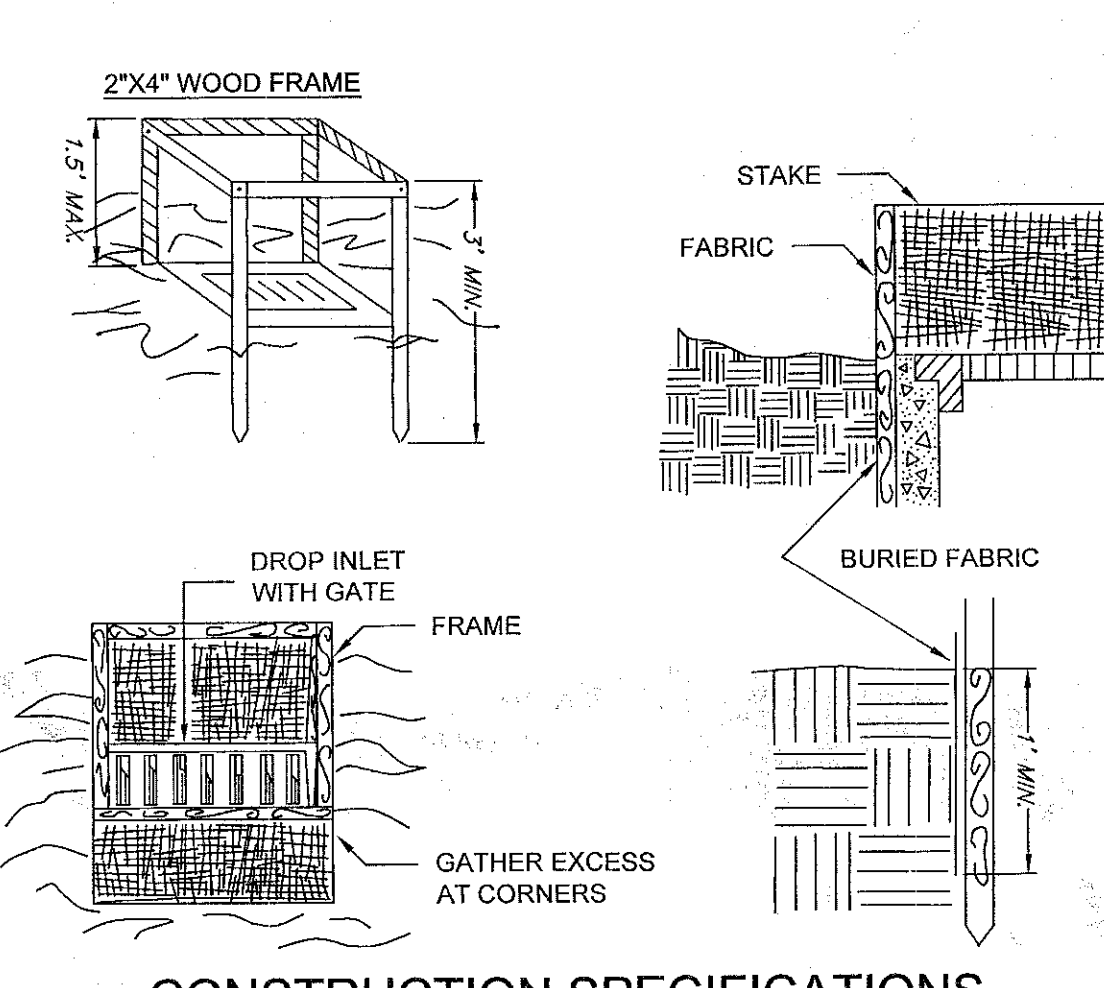
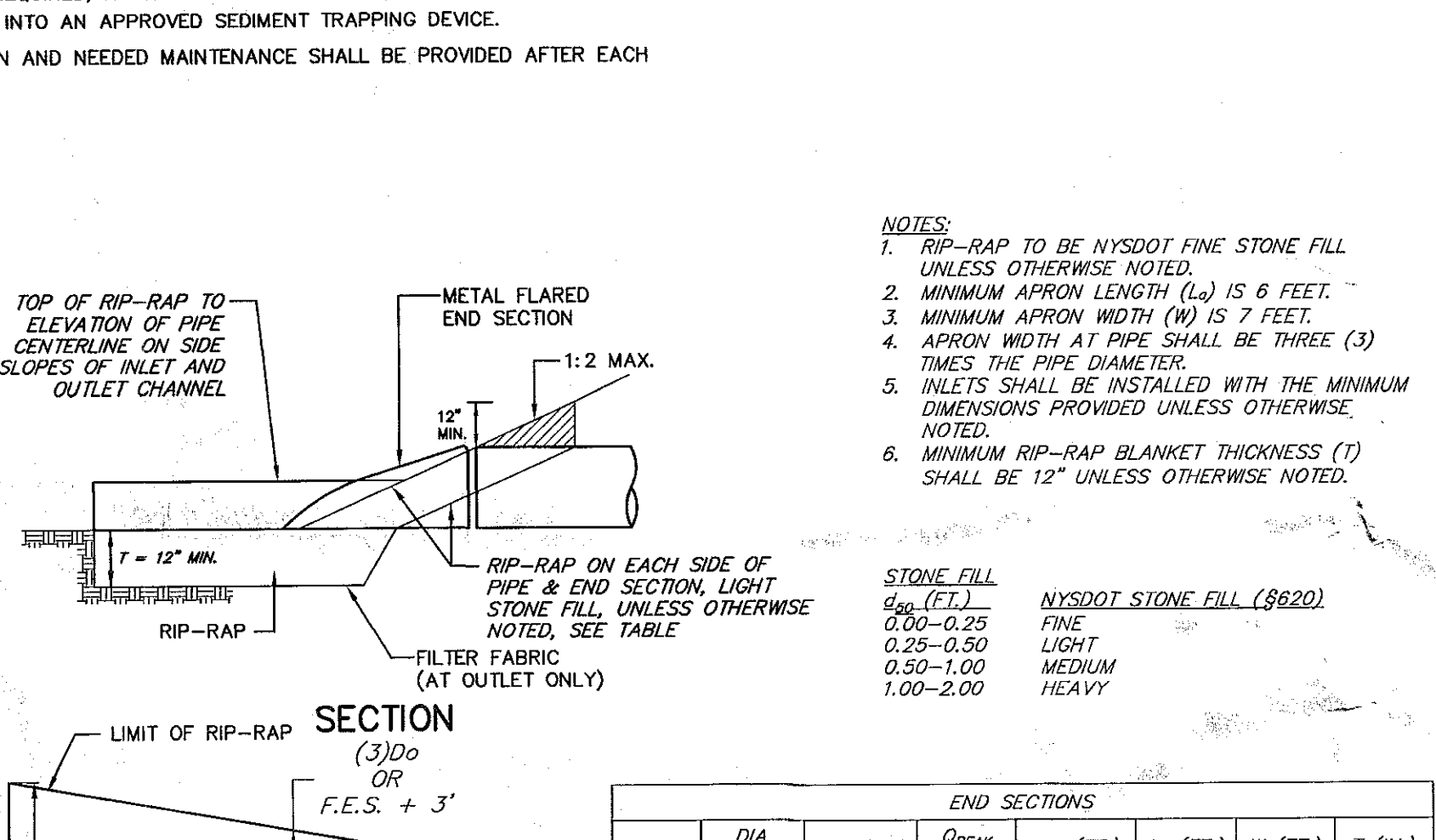
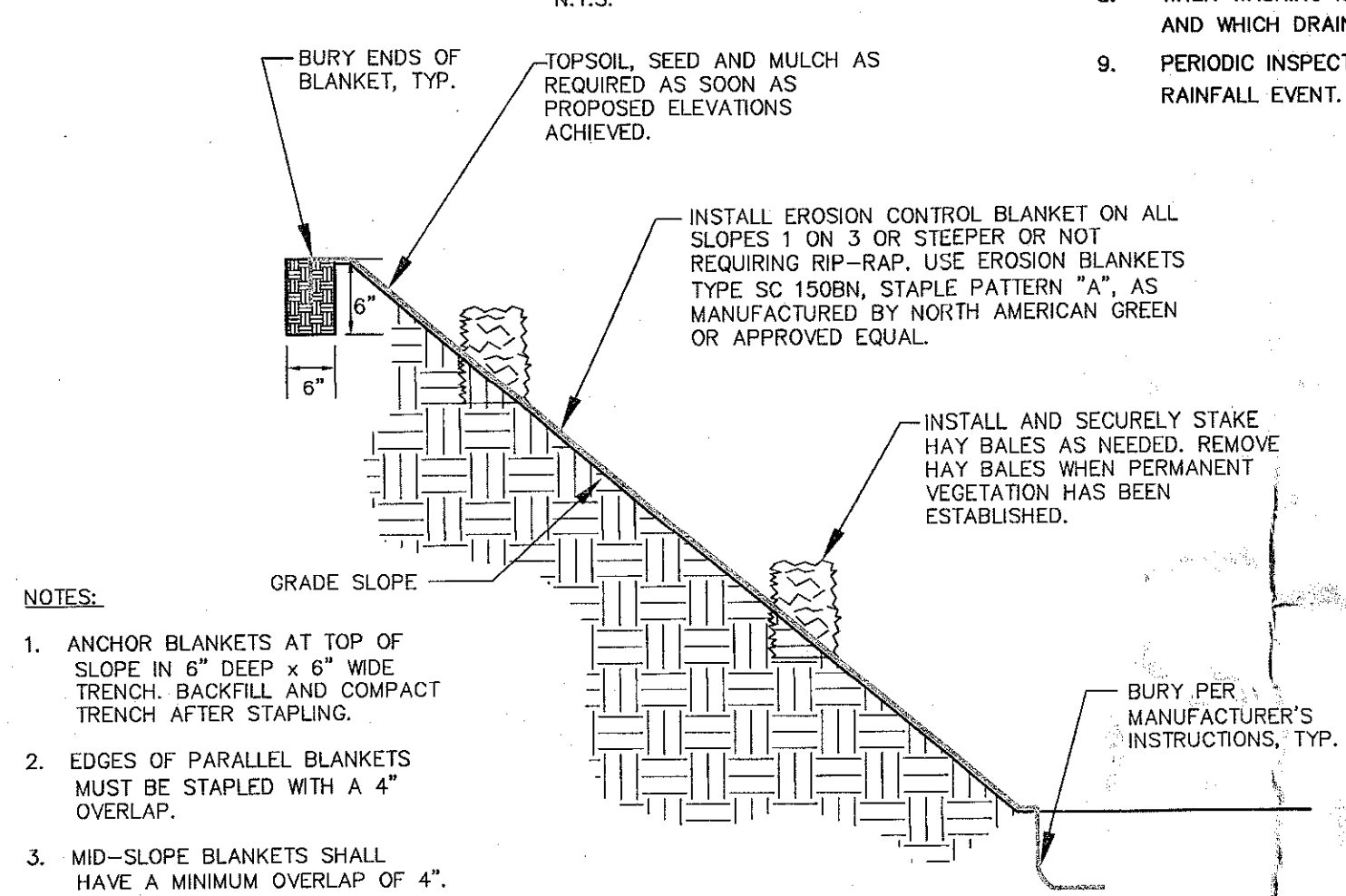


CONSTRUCTION SPECIFICATIONS

- STONE WILL BE PLACED ON A FILTER FABRIC FOUNDATION TO THE LINES, GRADES AND LOCATIONS SHOWN IN THE PLAN.
- SET SPACING OF CHECK DAMS TO ASSUME THAT THE ELEVATIONS OF THE CREST OF THE DOWNSTREAM DAM IS AT THE SAME ELEVATION OF THE TOE OF THE UPSTREAM DAM.
- EXTEND THE STONE A MINIMUM OF 1.5 FEET BEYOND THE DITCH BANKS TO PREVENT CUTTING AROUND THE DAM.
- PROTECT THE CHANNEL DOWNSTREAM OF THE LOWEST CHECK DAM FROM SCOUR AND EROSION WITH STONE OR LINER AS APPROPRIATE.
- ENSURE THAT CHANNEL APPURTENANCES SUCH AS CULVERT ENTRANCES BELOW CHECK DAMS ARE NOT SUBJECT TO DAMAGE OR BLOCKAGE FROM DISPLACED STONE.

- STONE SIZE - USE 1-4 INCH STONE OR RECLAIMED OR RECYCLED CONCRETE EQUIVALENT.
- LENGTH - NOT LESS THAN 50 FEET (EXCEPT ON A SINGLE RESIDENCE LOT WHERE A 30 FOOT MINIMUM LENGTH WOULD APPLY).
- THICKNESS - NOT LESS THAN 6 INCHES.
- WIDTH - 12 FOOT MINIMUM, BUT NOT LESS THAN THE FULL WIDTH AT POINTS WHERE INGRESS OR EGRESS OCCURS. 24 FOOT IF SINGLE ENTRANCE TO SITE.
- GEOTEXTILE - WILL BE PLACED OVER THE ENTIRE AREA PRIOR TO PLACING OF STONE.
- SURFACE WATER - ALL SURFACE WATER FLOWING OR DIVERTED TOWARD CONSTRUCTION ENTRANCES SHALL BE PIPED BENEATH THE ENTRANCE. IF PIPING IS IMPRACTICAL A MOUNTABLE BERM WITH 5:1 SLOPES WILL BE PERMITTED.
- MAINTENANCE - THE ENTRANCE SHALL BE MAINTAINED IN A CONDITION WHICH WILL PREVENT TRACKING OR FLOWING OF SEDIMENT ONTO PUBLIC RIGHTS-OF-WAY. ALL SEDIMENT SPILLED, DROPPED, WASHED, OR TRACKED ONTO PUBLIC RIGHTS-OF-WAY MUST BE REMOVED IMMEDIATELY.
- WHEN WASHING IS REQUIRED, IT SHALL BE DONE ON AN AREA STABILIZED WITH STONE AND WHICH DRAINS INTO AN APPROVED SEDIMENT TRAPPING DEVICE.
- PERIODIC INSPECTION AND NEEDED MAINTENANCE SHALL BE PROVIDED AFTER EACH RAINFALL EVENT.

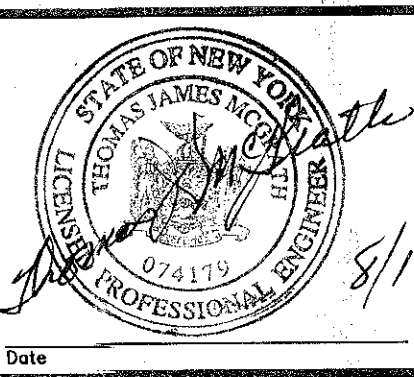
CHECK DAM



P:\3003\CAD\SHEETS\3003 C501.DWG 8/18/2014 11:17:53 AM

Rev	Date	Description	By
E	08-18-14	ISSUED FOR CONSTRUCTION	AJV
D	04-18-14	RESPONSE TO COMMENTS	AJV
C	03-11-14	RESPONSE TO COMMENTS-FINAL APPROVAL	AJV
B	01-10-14	ISSUE FOR DGH APPROVAL	AJV
A	01-07-14	ISSUED FOR SITE PLAN REVIEW	AJV

L. SIPPERLY & ASSOCIATES
ENGINEERS • SURVEYORS • LAND PLANNERS
696 TROY-SCHENECTADY ROAD, LATHAM, N.Y. 12110
PHONE: (518) 782-1800 FAX: (518) 782-1252



UNAUTHORIZED ALTERATION OR ADDITION TO THIS DOCUMENT IS A VIOLATION OF SECTION 7209, SUBDIVISION 2 OF THE NEW YORK STATE EDUCATION LAW.

DESIGNED BY: AV
DRAWN BY: AV
CHECKED BY: TM
APPROVED BY: LS
SCALE: AS NOTED
DATE: 01-10-2014

AFRIM'S SPORTS DOME
AT BETHLEHEM SOCCER CLUB
DETAILS (3)
450 WEMPLE ROAD
ALBANY COUNTY
TOWN OF BETHLEHEM
STATE OF NEW YORK

C-503
12 OF 13
REV. NO. E DWG. NO. E-14004