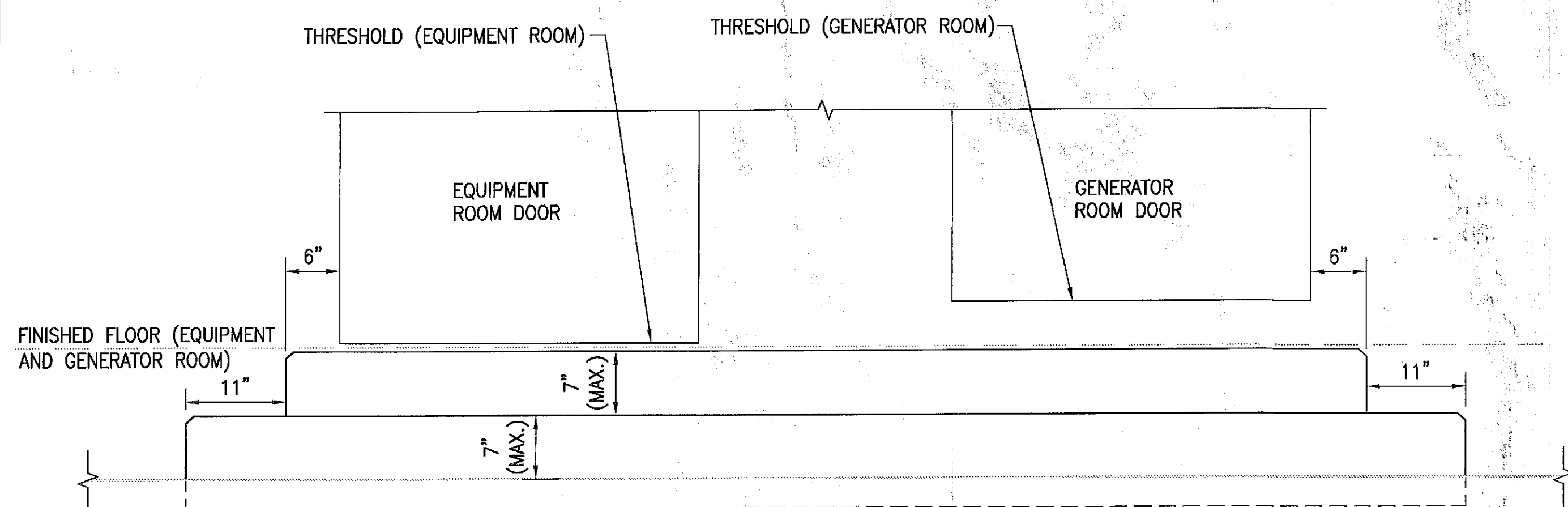
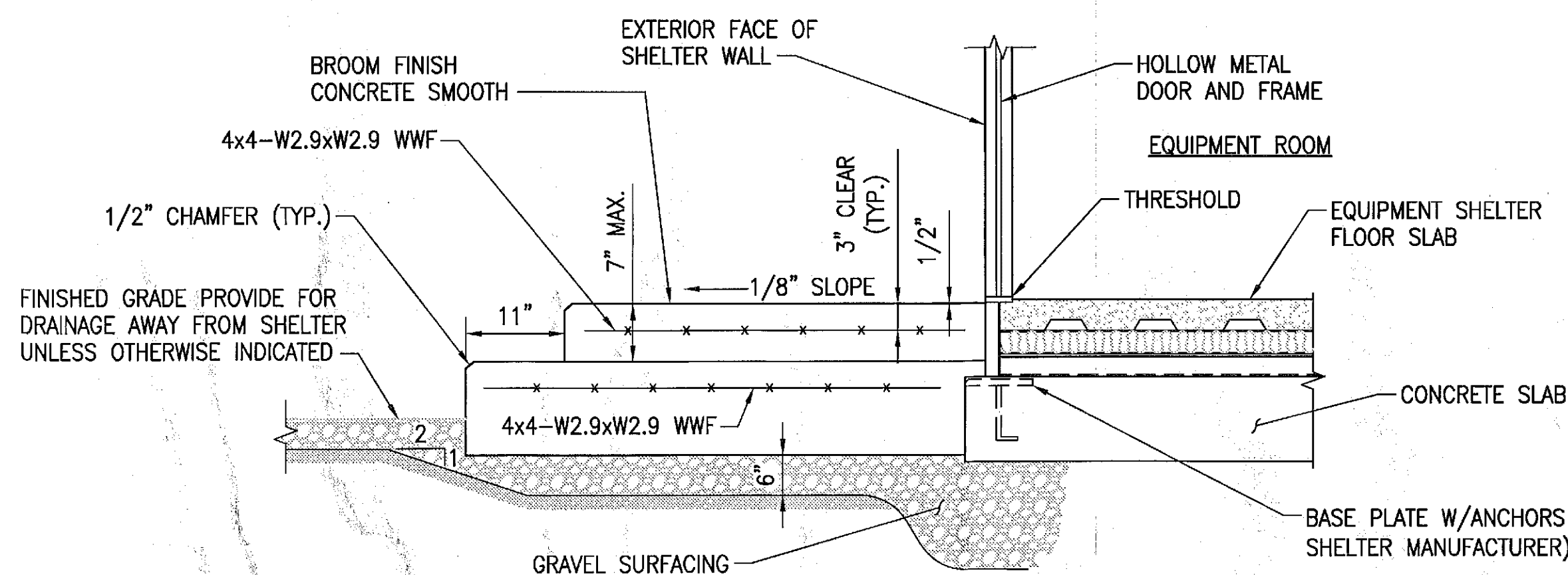


- NOTES:
1. REFER TO EQUIPMENT SHELTER DRAWINGS (BY OTHERS) FOR ADDITIONAL INFORMATION.
 2. VERIFY ALL DIMENSIONS WITH SHELTER MANUFACTURER'S DRAWINGS BEFORE CONSTRUCTION.
 3. BEARING PLATES SHALL BE CAST INTO PLACE FLUSH WITH THE ADJOINING CONCRETE SURFACE AND ALIGNED WITH THE EDGE OF THE SLAB.
 4. SHIM BEARING PLATES AS REQUIRED TO ENSURE CONTACT WITH BEAMS SUPPORTING THE EQUIPMENT SHELTER. SAID SHIMMING SHALL NOT PREVENT BEAMS FROM BEARING UNIFORMLY ON THE CONCRETE ALONG THEIR ENTIRE LENGTH.
 5. WELD BEAMS TO THE (6) BEARING PLATES TO PROVIDE FOR CONNECTION OF EQUIPMENT SHELTER TO FOUNDATION.

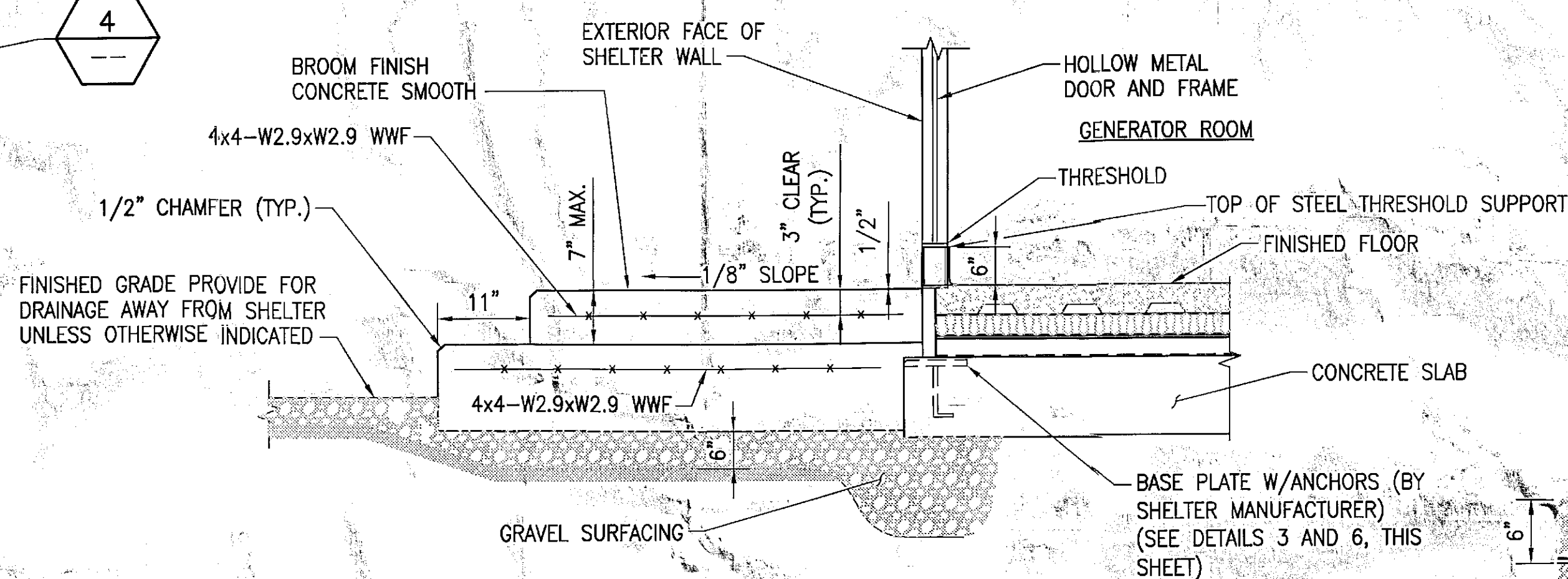
1 SHELTER FOUNDATION PLAN
NOT TO SCALE



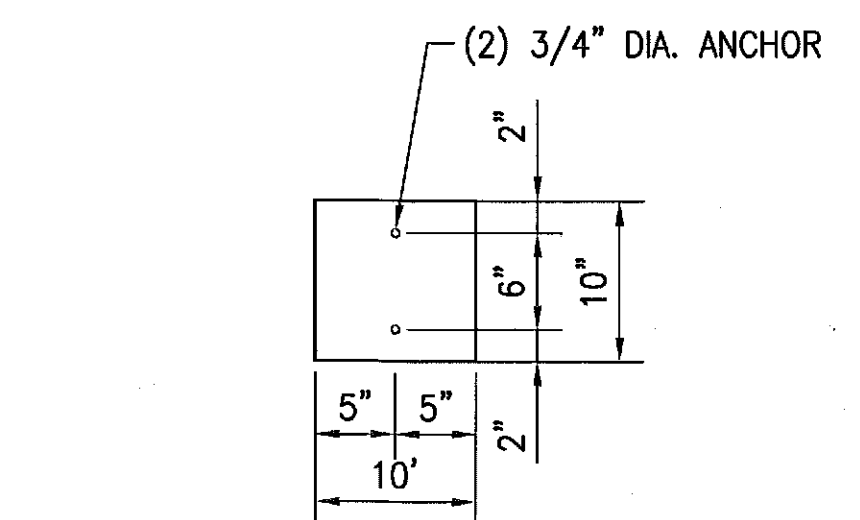
4 SHELTER FOUNDATION DETAIL
NOT TO SCALE



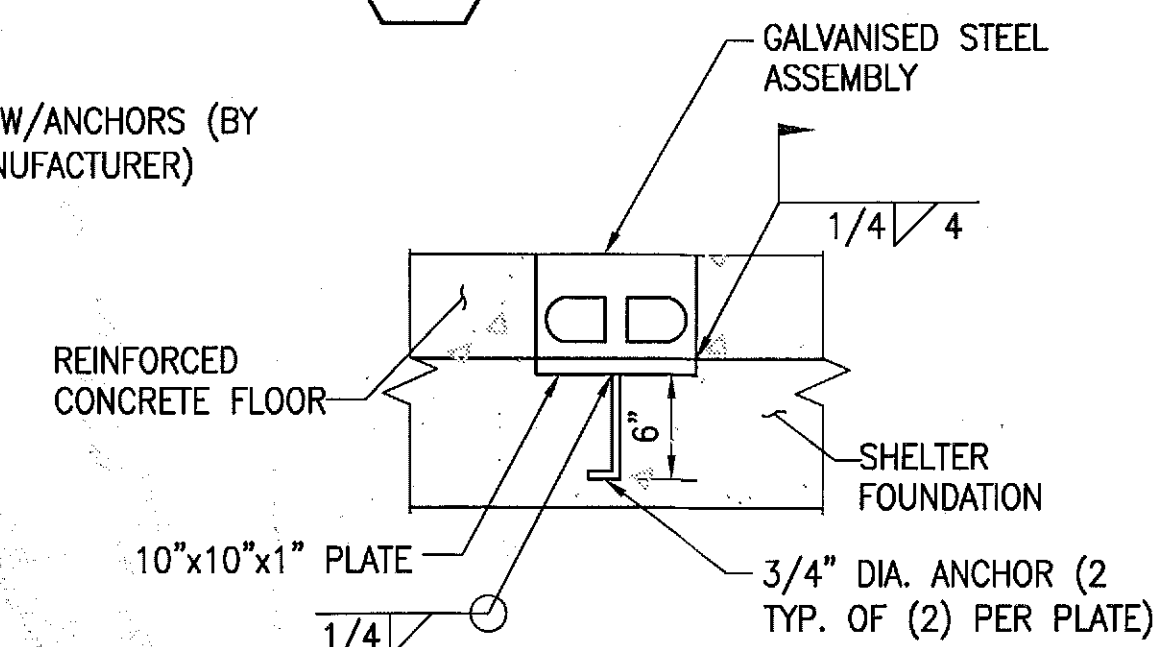
2 CONCRETE STOOP PAD - EQUIPMENT
NOT TO SCALE



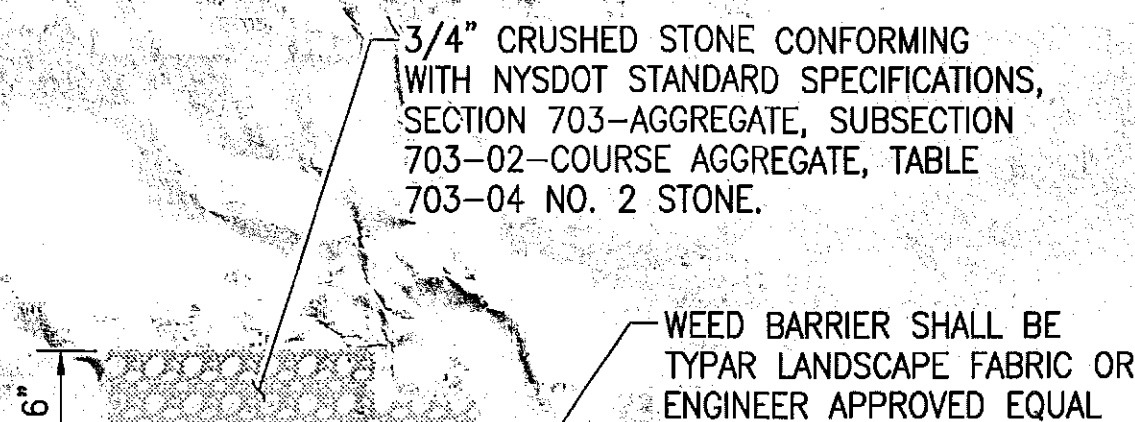
5 CONCRETE STOOP PAD - GENERATOR
NOT TO SCALE



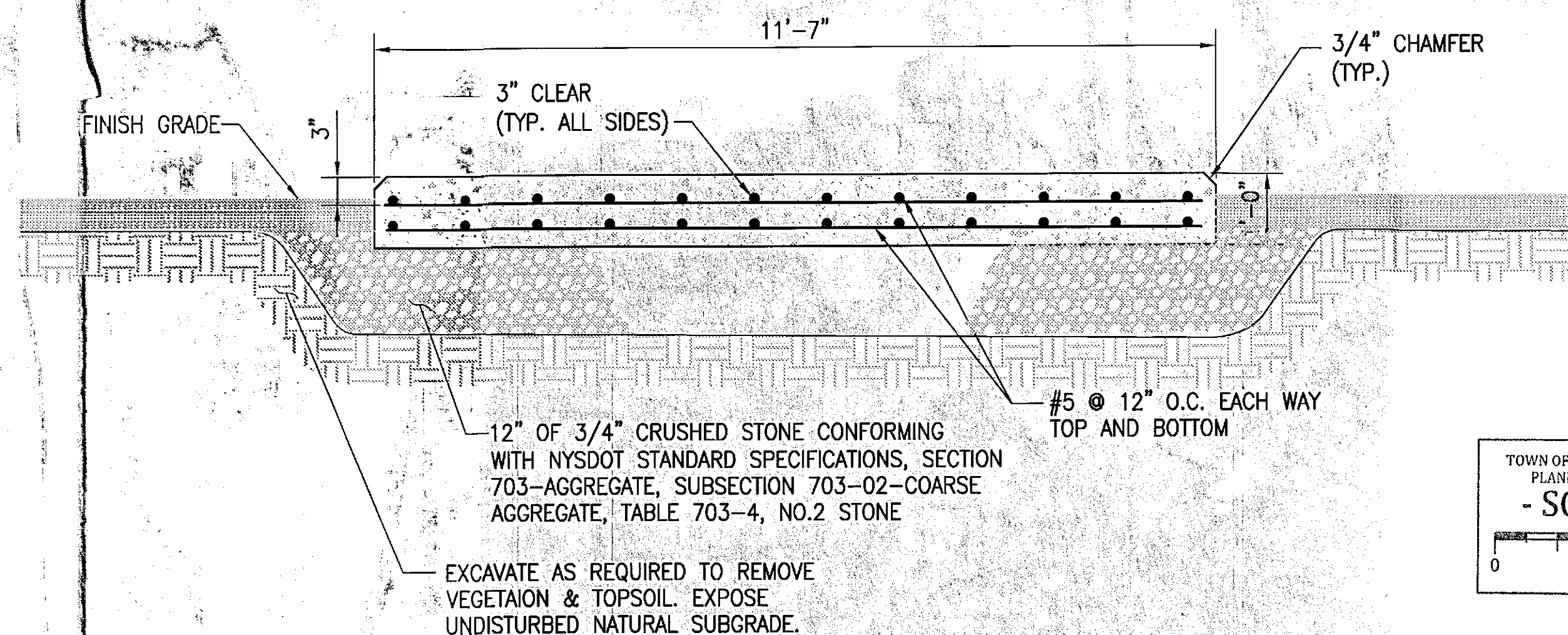
3 BEARING PLATE DETAIL
NOT TO SCALE



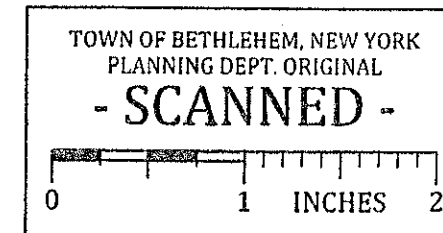
6 BEARING PLATE SECTION
NOT TO SCALE



8 GRAVEL SURFACING DETAIL
NOT TO SCALE



7 SHELTER FOUNDATION DETAIL
NOT TO SCALE



PLANNING BOARD
TOWN OF BETHLEHEM
ALBANY COUNTY, NEW YORK
By direction of the Chairman.
These drawings are hereby approved.
See sheet(s) 12 OF 27
for date and signature.

INFINIGY
Design. Build. Deliver.

1033 Watervliet Shaker Rd
Albany, NY 12205
Office # (518) 890-0780
Fax # (518) 890-0783



1	REVISED PER COMMENTS	SKB	6/30/15
0	ISSUED FOR BP	SKB	4/22/15
No.	Submittal / Revision	App'd	Date
Drawn:	SKB	Date:	4/22/15
Designed:	AJD	Date:	4/22/15
Checked:	AJD	Date:	4/22/15

Project Number
168-117

Project Title

CELL TOWER

457 NYS ROUTE 85
SLINGERLANDS, NY 12159

Prepared For

Phoenix Towers LLC

110 WASHINGTON AVE
NORTH HAVEN, CT 06473
C: 203-623-3287

Drawing Title

VERIZON WIRELESS
SHELTER ELEVATIONS

Drawing Scale:

CD

Date:

6/30/15

Sheet Number:

12 OF 27