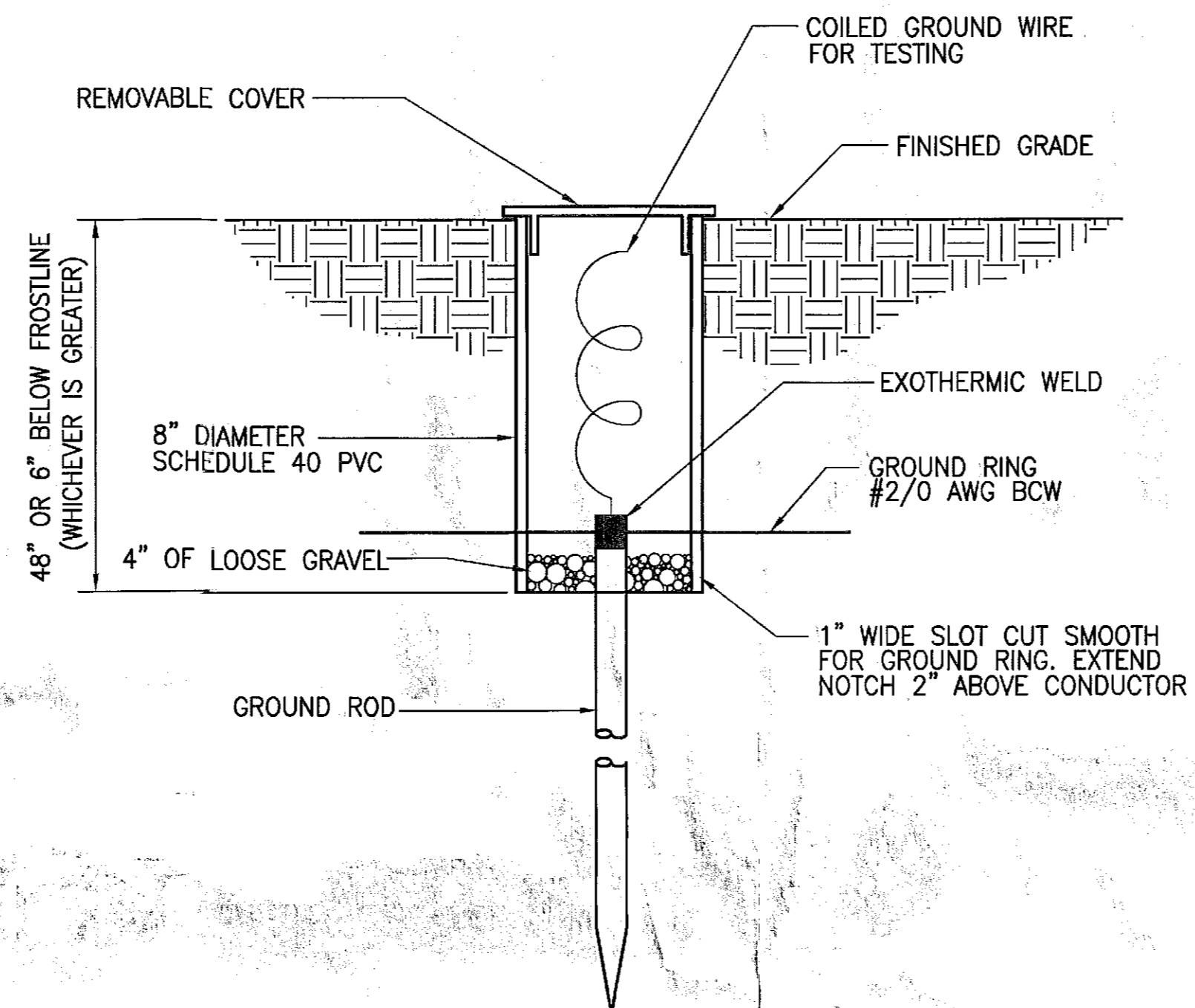
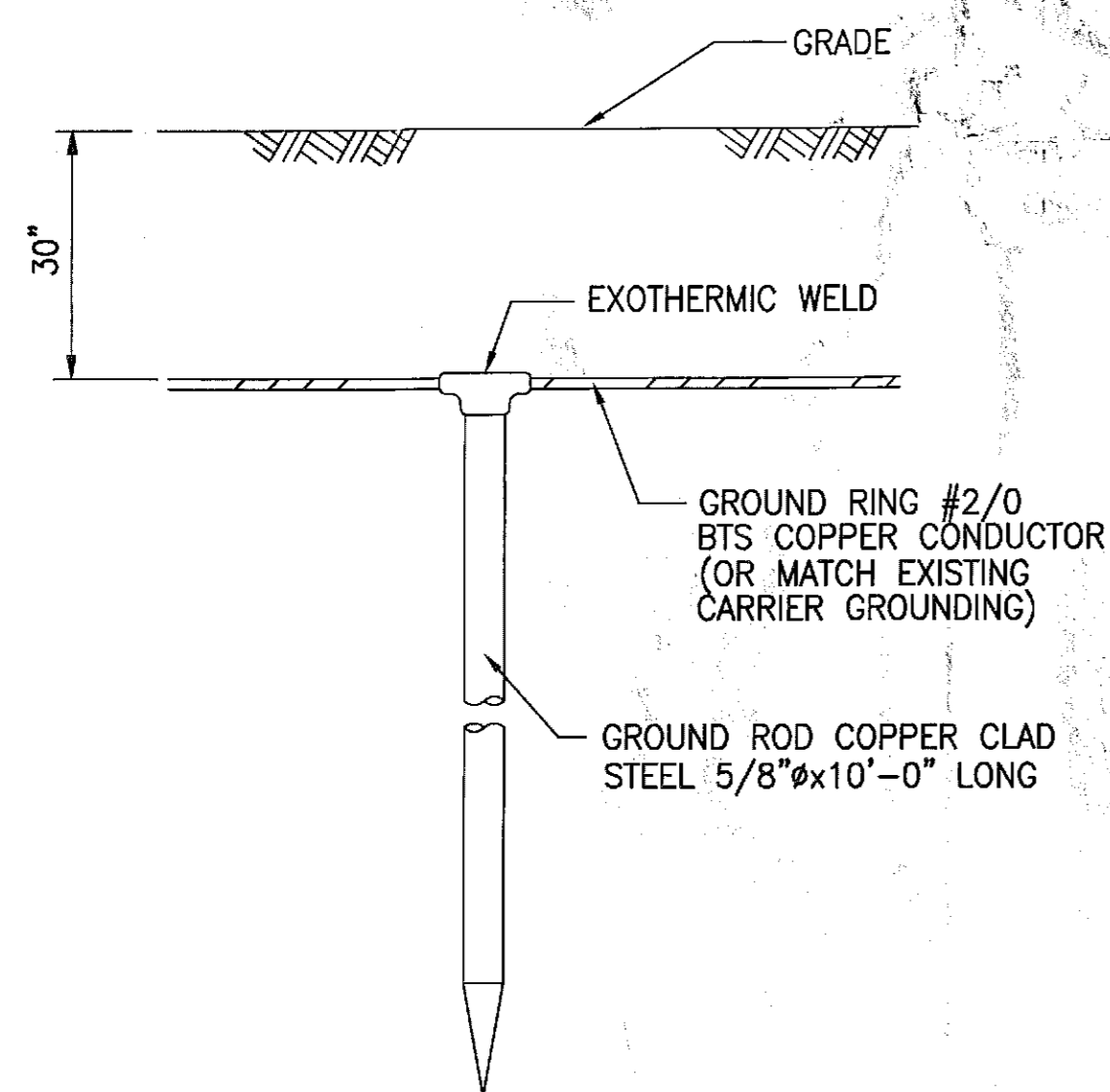


NOTE:
ALL MECHANICAL EXTERNAL TERMINATION SURFACES SHALL BE TREATED WITH T&B KOPR-SHIELD CP8 ANTI-OXIDATION COMPOUND.

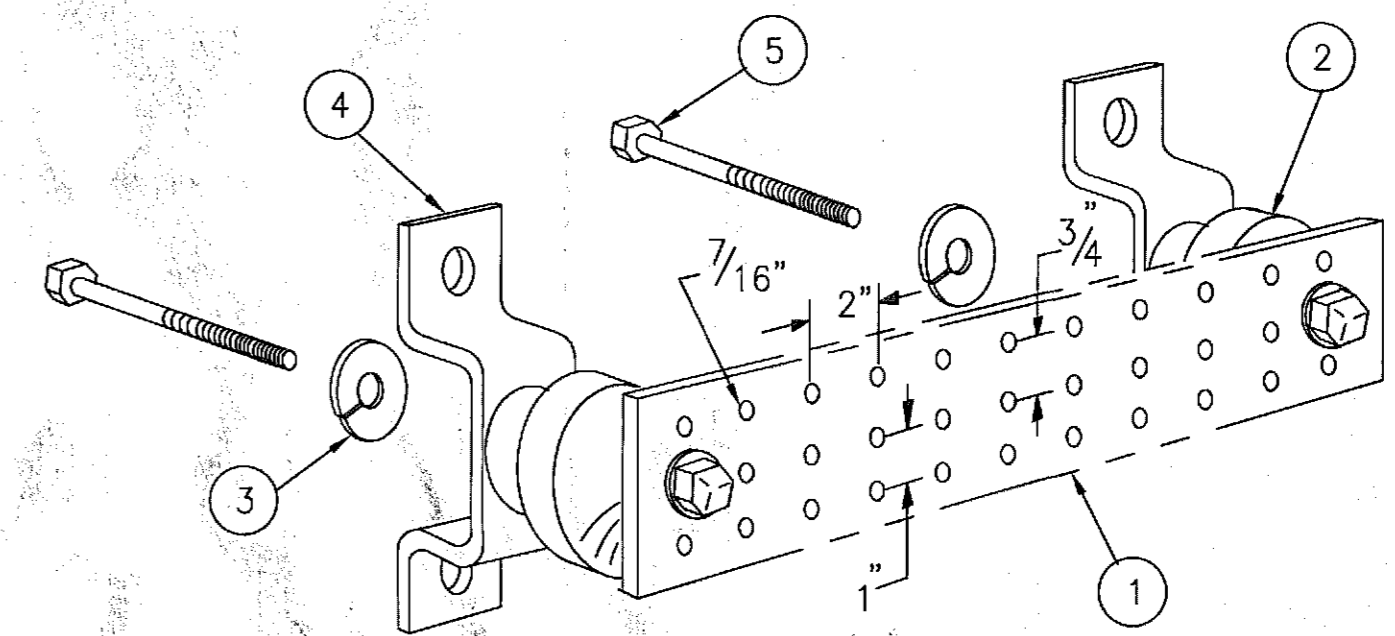
1 EQUIPMENT GROUND CONNECTION
-- NOT TO SCALE



2 INSPECTION SLEEVE DETAIL
-- NOT TO SCALE



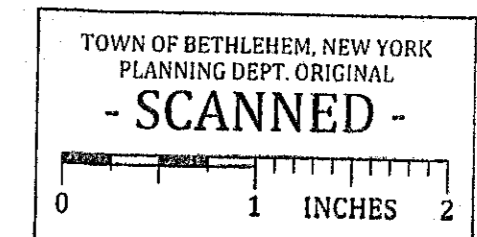
4 GROUND ROD DETAIL
-- NOT TO SCALE



3 TINNED GROUND BAR DETAIL
-- NOT TO SCALE

LEGEND

- 1 - TINNED COPPER GROUND BAR, 1/4"x 4"x 24"
- 2 - INSULATORS (NO INSULATORS ON TOWER)
- 3 - 5/8" LOCK WASHERS
- 4 - MOUNTING BRACKET (MOUNT HORIZONTAL ON VERTICAL CABLE LADDER)
- 5 - 5/8-11 X 1" H.H.C.S.BOLTS



PLANNING BOARD
TOWN OF BETHLEHEM
ALBANY COUNTY, NEW YORK
By direction of the Chairman.
These drawings are hereby approved.
See sheet(s) 27 of 27
for date and signature.

Design.
Build.
Deliver.

1033 Watervliet Shaker Rd
Albany, NY 12205
Office # (518) 880-0780
Fax # (518) 880-0783



1	REVISED PER COMMENTS	SKB	6/30/15
0	ISSUED FOR BP	SKB	4/22/15
No.	Submital / Revision	App'd	Date

Drawn: SKB Date: 4/22/15
Designed: AJD Date: 4/22/15
Checked: AJD Date: 4/22/15

Project Number
168-117

Project Title

CELL TOWER

457 NYS ROUTE 85
SLINGERLANDS, NY 12159

Prepared For

Phoenix Towers LLC

110 WASHINGTON AVE
NORTH HAVEN, CT 06473
C: 203-623-3577

Drawing Title

UTILITY SITE PLAN

Drawing Scale:

Date:
6/30/15

CD

UNAUTHORIZED ALTERATION OR ADDITION TO THIS DOCUMENT IS A VIOLATION OF APPLICABLE STATE AND/OR LOCAL LAWS

Sheet Number:

27 OF 27