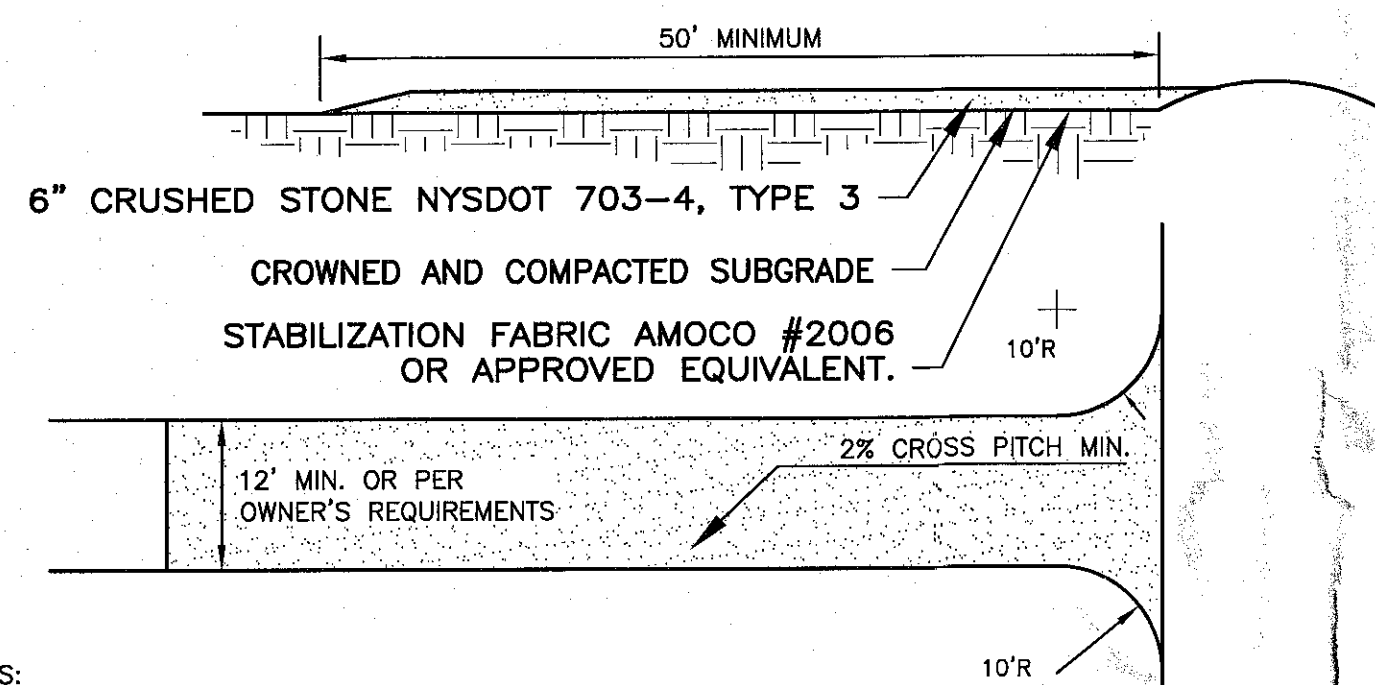
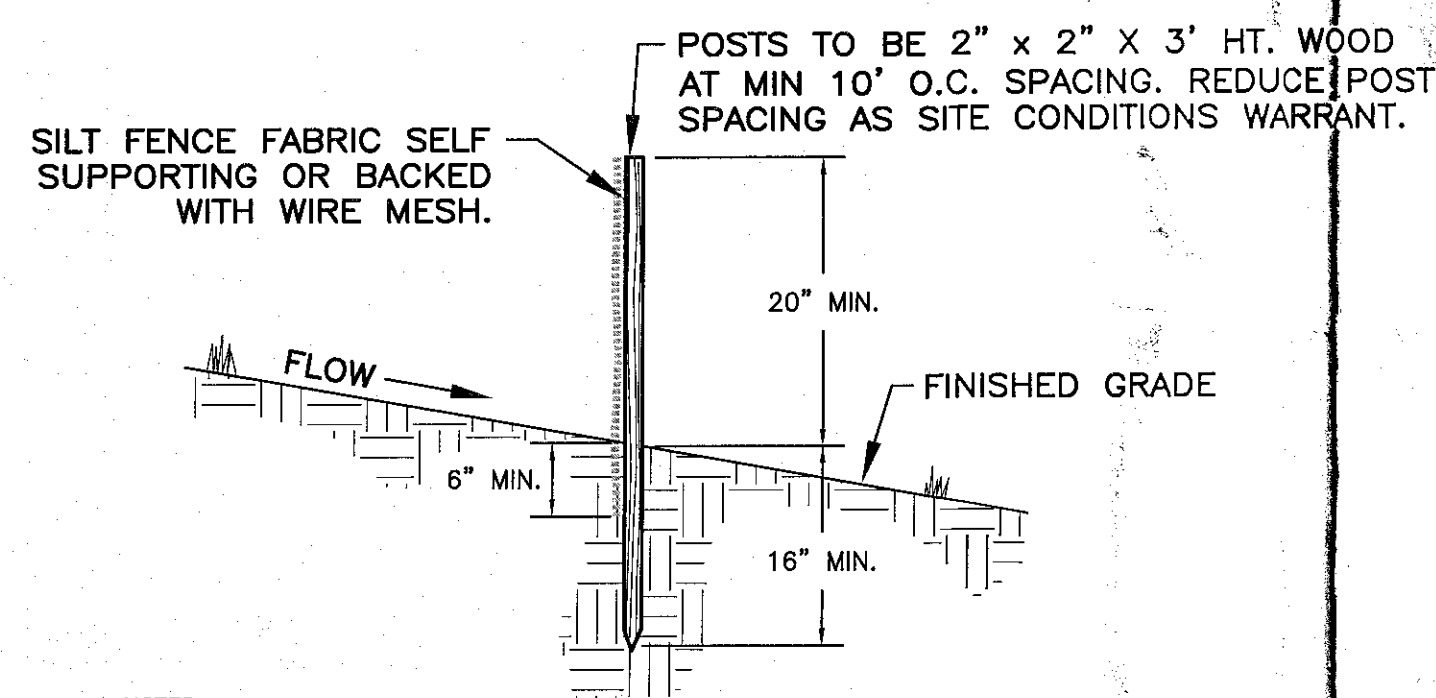


- ☐ HAS BEEN DETERMINED TO BE REQUIRED BASED ON SCOPE OF PROJECT. SWPPP REQUIRES DOCUMENTS FROM CONSTRUCTION TEAM.
- ☒ HAS BEEN DETERMINED NOT TO BE REQUIRED BASED ON SCOPE OF PROJECT.
- REFER TO REQUIREMENTS LISTED ON THIS SHEET AND SPECIFICATION SECTION 01560 ENCLOSED IN THE SWPPP. IF SCOPE OF PROJECT CHANGES, THE REQUIREMENT FOR A SWPPP AND NYSDEC PERMITTING MAY REQUIRE RE-EVALUATION.



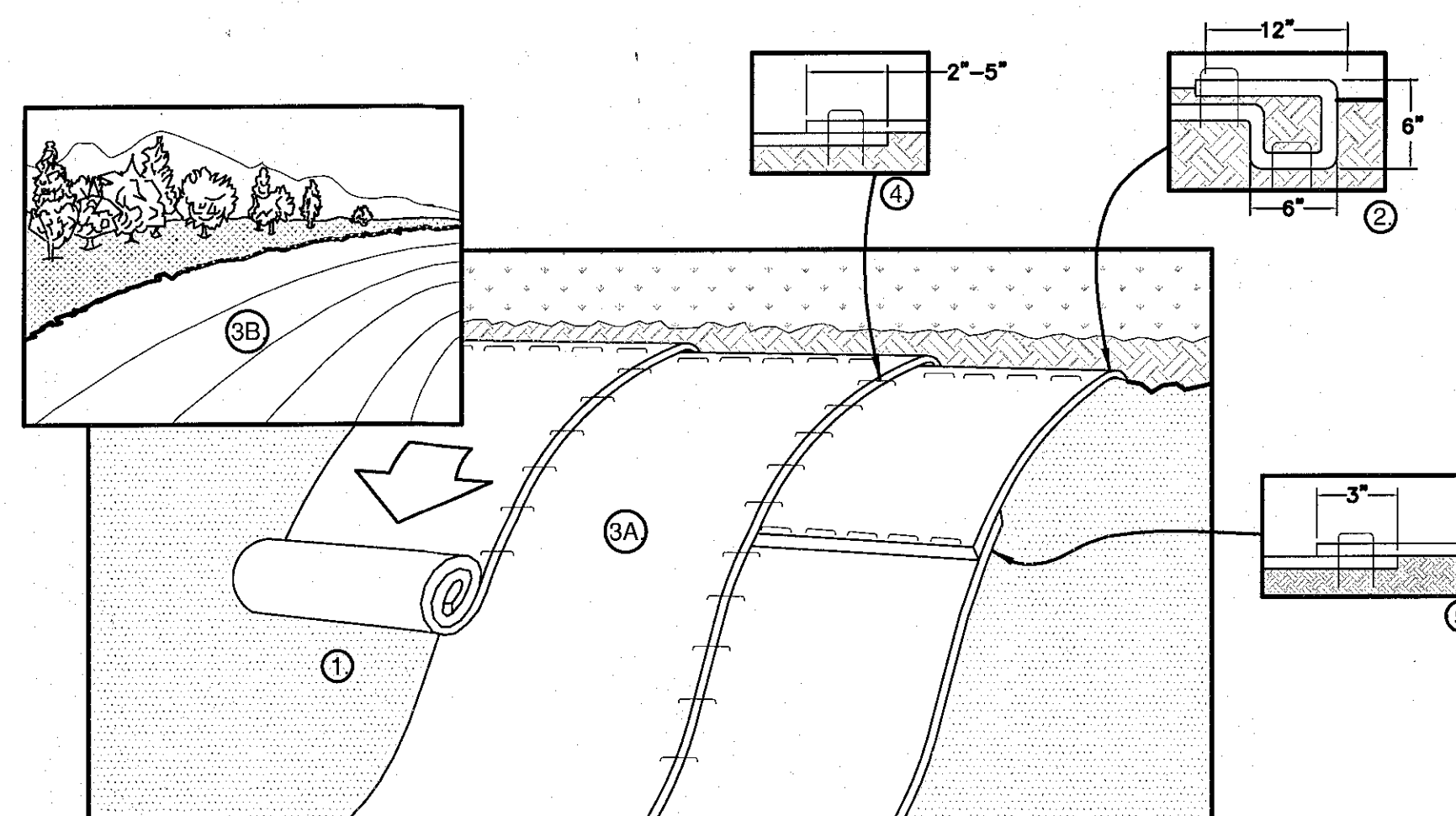
- NOTES:
1. STABILIZATION FABRIC SHALL BE PLACED OVER THE ENTIRE ENTRANCE AREA PRIOR TO PLACING OF STONE. OVERLAP FABRIC PER MANUFACTURER'S SPECIFICATIONS.
 2. ALL SURFACE WATER FLOWING OR DIVERTED TOWARDS THE CONSTRUCTION ENTRANCE SHALL BE PIPED BENEATH THE ENTRANCE ROAD.
 3. WHEN EQUIPMENT WASHING IS REQUIRED IT SHALL BE DONE ON A SEPARATE AREA ADJACENT TO THE ENTRANCE ROAD AND STABILIZED WITH STONE. EQUIPMENT WASHING WILL BE REQUIRED IF ROAD RECEIVES SIGNIFICANT SOILS OR DEBRIS ACCORDING TO JUDGMENT BY OWNER OR OWNER'S REPRESENTATIVE.
 4. KEEP ROADS CLEAR OF STONES, MUD, AND OTHER CONSTRUCTION DEBRIS. CLEAN PAVEMENT AS ACCUMULATIONS WARRANT AND AS ORDERED BY ENGINEER.
 5. REMOVE SILT ACCUMULATIONS ROUTINELY AND DISPOSE OF PROPERLY SUCH THAT WATER QUALITY IS NOT IMPAIRED. DO NOT INTRODUCE SILT INTO DRAINAGE SYSTEM OR TOPSOIL/RESTORATION AREAS.

1 STABILIZED CONSTRUCTION ENTRANCE PAD DETAIL
SCALE: N.T.S.



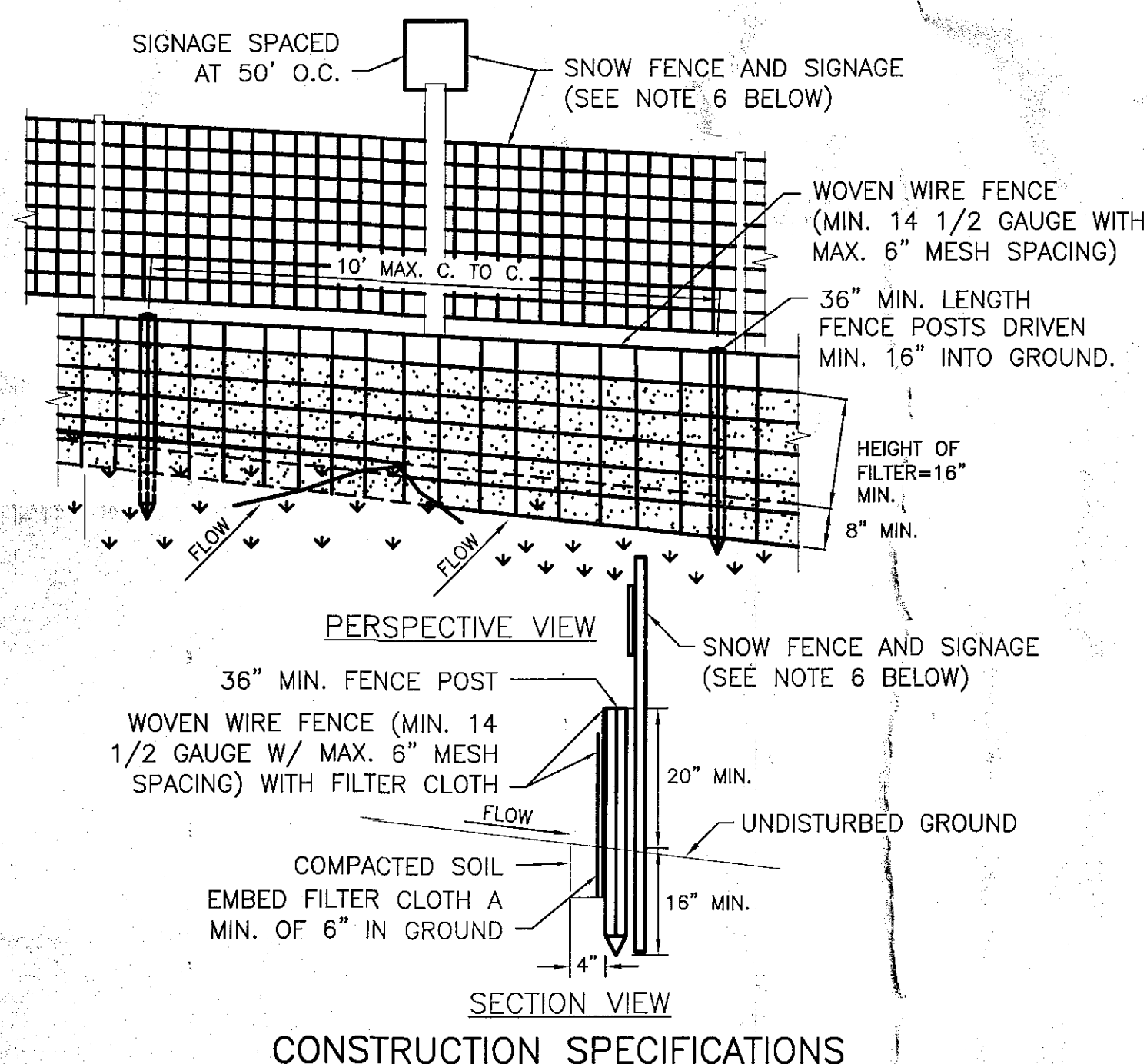
- NOTES:
1. SILT FENCE FABRIC SHALL BE FIRMLY ATTACHED TO POSTS USING WIRE TIES OR STAPLES.
 2. EMBED FILTER CLOTH A MINIMUM OF 6" BELOW FINISHED GRADE.
 3. WHEN TWO SECTIONS OF FILTER CLOTH ADJOIN EACH OTHER THEY SHALL BE OVERLAPPED A MINIMUM OF SIX INCHES AND FOLDED.
 4. MAINTENANCE SHALL BE PERFORMED IN ACCORDANCE WITH THE "GENERAL MAINTENANCE PLAN" OR WHEN BULGES OF MATERIAL DEVELOP IN FENCES.

2 SILT FENCE DETAIL
SCALE: N.T.S.



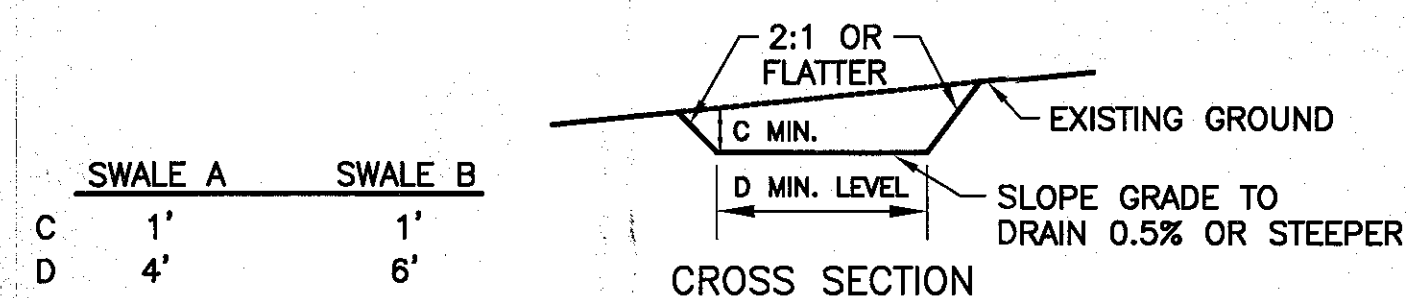
1. PREPARE SOIL BEFORE INSTALLING ROLLED EROSION CONTROL PRODUCTS (RECP's), INCLUDING ANY NECESSARY APPLICATION OF LIME, FERTILIZER, AND SEED.
NOTE: WHEN USING CELL-O-SEED DO NOT SEED PREPARED AREA. CELL-O-SEED MUST BE INSTALLED WITH PAPER SIDE DOWN.
2. BEGIN AT THE TOP OF THE SLOPE BY ANCHORING THE RECP's IN A 6" DEEP X 6" WIDE TRENCH WITH APPROXIMATELY 12" OF RECP's EXTENDED BEYOND THE UP-SLOPE PORTION OF THE TRENCH. ANCHOR THE RECP's WITH A ROW OF STAPLES/STAKES APPROXIMATELY 12" APART IN THE BOTTOM OF THE TRENCH. BACKFILL AND COMPACT THE TRENCH AFTER STAPLING. APPLY SEED TO COMPACTED SOIL AND FOLD REMAINING 12" PORTION OF RECP's BACK OVER SEED AND COMPACTED SOIL. SECURE RECP's OVER COMPACTED SOIL WITH A ROW OF STAPLES/STAKES SPACED APPROXIMATELY 12" APART ACROSS THE WIDTH OF THE RECP's.
3. ROLL THE RECP's (A.) DOWN OR (B.) HORIZONTALLY ACROSS THE SLOPE. RECP's WILL UNROLL WITH APPROPRIATE SIDE AGAINST THE SOIL SURFACE. ALL RECP's MUST BE SECURELY FASTENED TO SOIL SURFACE BY PLACING STAPLES/STAKES IN APPROPRIATE LOCATIONS AS SHOWN IN THE STAPLE PATTERN GUIDE. WHEN USING THE DOT SYSTEM™, STAPLES/STAKES SHOULD BE PLACED THROUGH EACH OF THE COLORED DOTS CORRESPONDING TO THE APPROPRIATE STAPLE PATTERN.
4. THE EDGES OF PARALLEL RECP's MUST BE STAPLED WITH APPROXIMATELY 2" – 5" OVERLAP DEPENDING ON RECP's TYPE.
5. CONSECUTIVE RECP's SPLICED DOWN THE SLOPE MUST BE PLACED END OVER END (SHINGLE STYLE) WITH AN APPROXIMATE 3" OVERLAP. STAPLE THROUGH OVERLAPPED AREA, APPROXIMATELY 12" APART ACROSS ENTIRE ON RECP's TYPE.
NOTE: *IN LOOSE SOIL CONDITIONS, THE USE OF STAPLE OR STAKE LENGTHS GREATER THAN 6" MAY BE NECESSARY TO PROPERLY SECURE THE RECP's.

3 SLOPE STABILIZATION MATTING INSTALLATION DETAIL
SCALE: N.T.S.



1. WOVEN WIRE FENCE TO BE FASTENED SECURELY TO FENCE POSTS WITH WIRE TIES OR STAPLES. POSTS SHALL BE STEEL EITHER "T" OR "U" TYPE OR HARDWOOD.
2. FILTER CLOTH TO BE TO BE FASTENED SECURELY TO WOVEN WIRE FENCE WITH TIES, SPACED EVERY 24" AT TOP AND MID SECTION. FENCE SHALL BE WOVEN WIRE, 12 1/2 GAUGE, 6" MAXIMUM MESH OPENING.
3. WHEN TWO SECTIONS OF FILTER CLOTH ADJOIN EACH OTHER THEY SHALL BE OVER-LAPPED BY SIX INCHES AND FOLDED. FILTER CLOTH SHALL BE EITHER FILTER X, MIRAFI 100X, STABILINKA 1140N, OR APPROVED EQUIVALENT.
4. PREFABRICATED UNITS SHALL BE GEOFAB, ENVIROFENCE, OR APPROVED EQUIVALENT.
5. MAINTENANCE SHALL BE PERFORMED AS NEEDED AND MATERIAL REMOVED WHEN "BULGES" DEVELOP IN THE SILT FENCE.
6. WHEN SILT FENCE IS PLACED PARALLEL TO ADJACENT PROTECTED WETLAND, INSTALLATION OF A BRIGHT ORANGE SNOW FENCE SHALL BE INSTALLED WITH SILT FENCE ON WETLAND SIDE TO ACT AS A VISUAL REFERENCE OF THE EXISTENCE OF A PROTECTED WETLAND. SIGNAGE SHALL ALSO ACCOMPANY SNOW FENCE, SPACED AT 50 FEET ON CENTER, STATING "PROTECTED WETLAND, DO NOT DISTURB".
7. REFER TO SPECIFICATION SECTION 312513.

4 SNOW AND SILT FENCE DETAIL
SCALE: N.T.S.



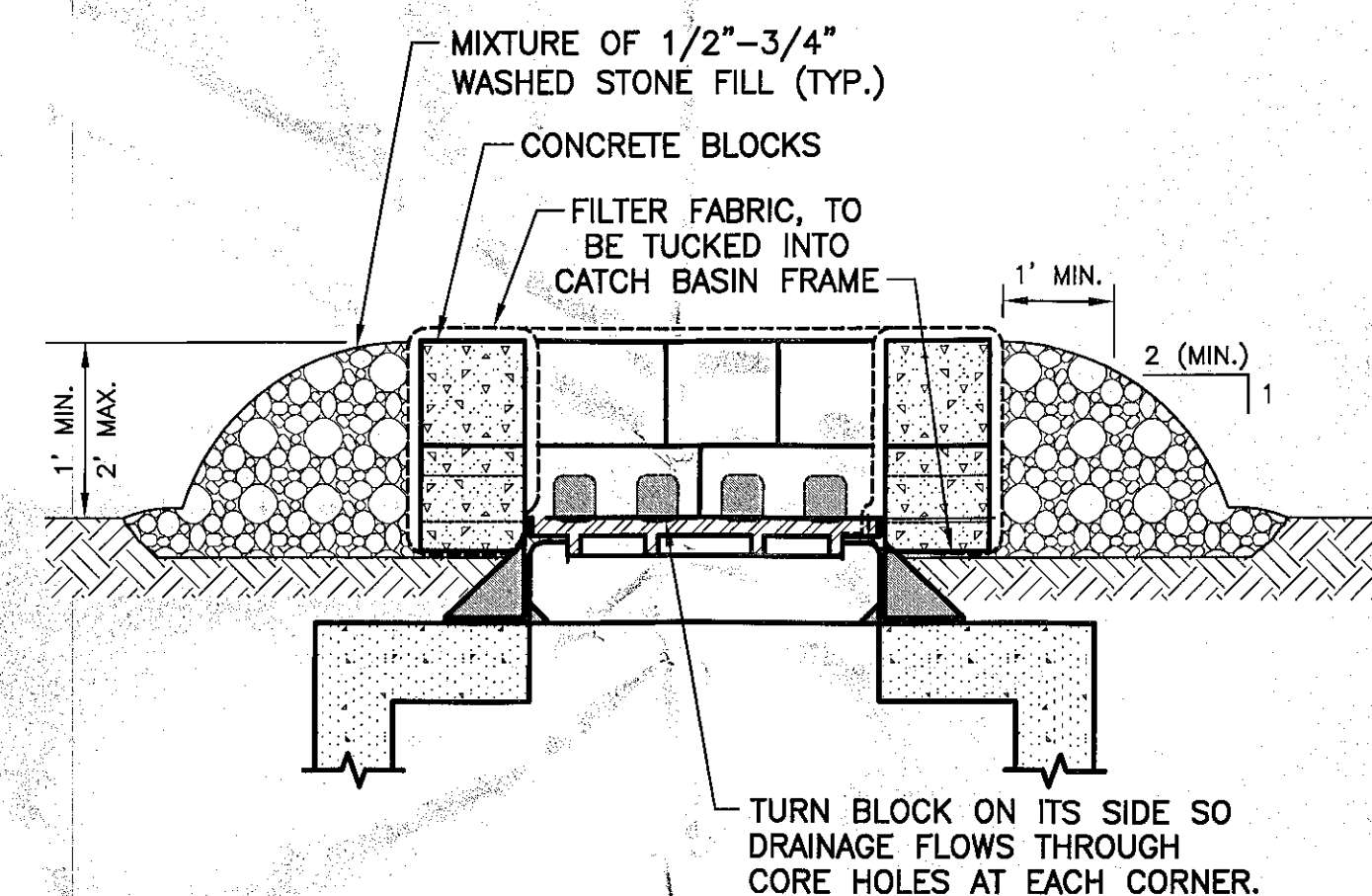
1. ALL TEMPORARY SWALES SHALL HAVE UNINTERRUPTED POSITIVE GRADE TO AN OUTLET.
2. DIVERTED RUNOFF FROM A DISTURBED AREA SHALL BE CONVEYED TO A SEDIMENT TRAPPING DEVICE.
3. DIVERTED RUNOFF FROM AN UNDISTURBED AREA SHALL OUTLET DIRECTLY INTO AN UNDISTURBED STABILIZED AREA AT NON-EROSIVE VELOCITY.
4. ALL TREES, BRUSH, STUMPS, OBSTRUCTIONS, AND OTHER OBJECTIONABLE MATERIAL SHALL BE REMOVED AND DISPOSED OF SO AS NOT TO INTERFERE WITH THE PROPER FUNCTIONING OF THE SWALE.
5. THE SWALE SHALL BE EXCAVATED OR SHAPED TO LINE, GRADE, AND CROSS SECTION AS REQUIRED TO MEET THE CRITERIA SPECIFIED HEREIN AND BE FREE OF BANK PROJECTIONS OR OTHER IRREGULARITIES WHICH WILL IMPEDE NORMAL FLOW.
6. FILLS SHALL BE COMPACTED BY EARTH MOVING EQUIPMENT.
7. ALL EARTH REMOVED AND NOT NEEDED ON CONSTRUCTION SHALL BE PLACED SO THAT IT WILL NOT INTERFERE WITH THE FUNCTIONING OF THE SWALE.
8. STABILIZATION SHALL BE AS PER THE CHART BELOW:

MINIMUM FLOW CHANNEL STABILIZATION

TYPE OF TREATMENT	CHANNEL GRADE	SWALE A (5acc. OR LESS)	SWALE B (5acc.-10acc.)
1	0.5 - 3.0%	SEED AND STRAW MULCH	SEED AND STRAW MULCH
2	3.1 - 5.0%	SEED AND STRAW MULCH	SEED USING JUTE OR EXCELSIOR
3	5.1 - 8.0%	SEED WITH JUTE OR EXCELSIOR; SOD	LINED RIP-RAP 4-8" RECYCLED CONCRETE EQUIVALENT
4	8.1 - 20%	LINED 4-8" RIP-RAP	ENGINEERED DESIGN

9. PERIODIC INSPECTION AND REQUIRED MAINTENANCE MUST BE PROVIDED AFTER EACH RAIN EVENT.
10. FLOW CHANNEL STABILIZATION SHOWN ABOVE WILL REQUIRE SUBSEQUENT MAINTENANCE AND ATTENTION. SINCE RUNOFF PATTERNS, QUANTITY, QUALITY AND SEDIMENT CONTENT VARY WIDELY FROM SITE TO SITE, ACTUAL STABILIZATION MAY EXCEED THAT SHOWN IN THE CONTRACT DOCUMENTS. REMOVE SILT ACCUMULATIONS ROUTINELY AND DISPOSE OF PROPERLY SUCH THAT WATER QUALITY IS NOT IMPAIRED. DO NOT INTRODUCE SILT INTO TOPSOIL/RESTORATION AREAS.
11. REMOVE TEMPORARY SWALE WHEN SITE IS SUBSTANTIALLY OR COMPLETELY STABILIZED AND SWALE IS NO LONGER REQUIRED. PERFORM FINAL GRADING AND ESTABLISH VEGETATION AT ALL DISTURBED AREAS.

5 DIVERSION SWALE DETAIL



6 DROP INLET PROTECTION STRUCTURE DETAIL
SCALE: N.T.S.

PROTECTION OF TREES:

PROTECT EXISTING TREES WHICH ARE TO REMAIN AND WHICH MAY BE INJURED, BRUISED, DEFACED, OR OTHERWISE DAMAGED BY CONSTRUCTION OPERATIONS, UTILIZING STANDARD TREE PROTECTION CRITERIA INCLUDING:

- A. INSTALLATION OF SAFETY ORANGE PLASTIC FENCING (MINIMUM 4' IN HEIGHT) AROUND INDIVIDUAL TREES DESIGNATED FOR PROTECTION. FENCING SHALL BE INSTALLED AT THE OUTWARD LIMIT OF THE TREE'S DRIPLINE OR EXTENT OF CANOPY COVER.
- B. INSTALLATION OF SAFETY ORANGE PLASTIC FENCING (MINIMUM 4' IN HEIGHT) AROUND GROUPS OF TREES DESIGNATED FOR PROTECTION.
- C. TREE AND/OR SHRUB BRANCHES IN THE WAY OF EQUIPMENT SHALL BE TRIMMED ACCORDING TO PROFESSIONAL HORTICULTURAL STANDARDS. UNDER NO CIRCUMSTANCES SHALL THE CONTRACTOR AND SUB-CONTRACTORS USE EQUIPMENT TO DEMOLISH BRANCHES AS WORK PROCEEDS.

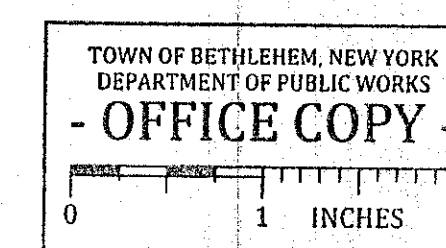
REQUIRED FENCING SHALL BE INSTALLED PRIOR TO THE INITIATION OF LAND DISTURBING ACTIVITIES AND SHALL BE REMOVED AT THE CONCLUSION OF CONSTRUCTION. REMOVE DISPLACED ROCKS FROM UNCLEARED AREAS. BY APPROVED EXCAVATION, REMOVE TREES WITH 30 PERCENT OR MORE OF THEIR ROOT SYSTEMS DESTROYED. REMOVAL OF TREES AND THE PROCEDURE FOR REMOVAL REQUIRES APPROVAL OF THE TOWN OR LANDSCAPE ARCHITECT. TREES DESIGNATED FOR REMOVAL SHALL BE REMOVED IN A MANNER THAT WILL NOT IMPACT ADJACENT TREES.

LANDSCAPE REPLACEMENT:

REMOVE TREES AND OTHER LANDSCAPE FEATURES SCARRED OR DAMAGED BY EQUIPMENT OPERATIONS, AND REPLACE WITH EQUIVALENT, UNDAMAGED TREES AND LANDSCAPE FEATURES. OBTAIN OWNER'S OR LANDSCAPE ARCHITECT'S APPROVAL BEFORE REPLACEMENT. REPLACEMENT OF TREES SHALL OCCUR ON A ONE-TO-ONE BASIS, UNLESS OTHERWISE NOTED.

7 PROTECTION AND REPLACEMENT OF TREES
SCALE: N.T.S.

PLANNING BOARD APPROVAL



PLANNING BOARD
TOWN OF BETHLEHEM
ALBANY COUNTY, NEW YORK
By direction of the Chairman.
These drawings are hereby approved
See sheet(s) 2 of 10
for date and signature.